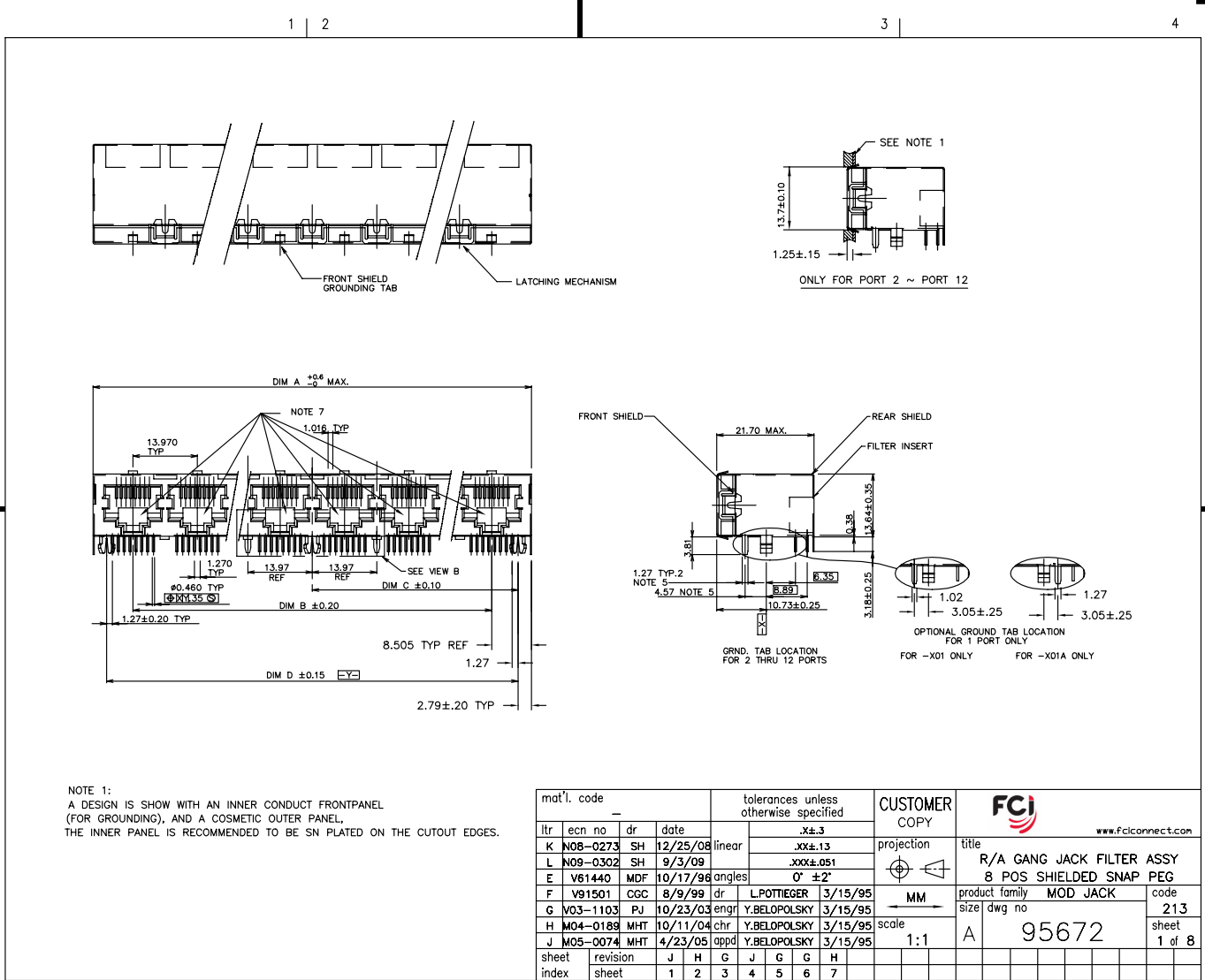


Tous droits strictement réservés. Reproduction ou communication à des tiers interdite sous quelque forme que ce soit sans autorisation écrite du propriétaire. Propriété de c FCI. Droits de reproduction FCI.



All rights strictly reserved. Reproduction or issue to third parties in any form whatever is not permitted without written authority from the proprietor. Property of FCI. Copyright FCI.



NOTE 1:
A DESIGN IS SHOW WITH AN INNER CONDUCT FRONTPANEL
(FOR GROUNDING), AND A COSMETIC OUTER PANEL.
THE INNER PANEL IS RECOMMENDED TO BE SN PLATED ON THE CUTOUT EDGES.

mat'l. code		tolerances unless otherwise specified					CUSTOMER COPY		 www.fciconnect.com	
ltr	ecn no	dr	date	linear	angles	projection	title			
K	N08-0273	SH	12/25/08	.XX±.13		 MM	R/A GANG JACK FILTER ASSY			
L	N09-0302	SH	9/3/09	.XXX±.051			8 POS SHIELDED SNAP PEG			
E	V61440	MDF	10/17/96	0° ±2'		scale	product family	MOD JACK	code	
F	V91501	CGC	8/9/99	dr	L.POTTIEGER	3/15/95	size	dwg no	213	
G	V03-1103	PJ	10/23/03	engr	Y.BELOPOLSKY	3/15/95	A	95672	sheet	
H	M04-0188	MHT	10/11/04	chr	Y.BELOPOLSKY	3/15/95	1:1		1 of 8	
J	M05-0074	MHT	4/23/05	appd	Y.BELOPOLSKY	3/15/95				
sheet index	revision	J	H	G	J	G	G	H		
sheet	sheet	1	2	3	4	5	6	7		

ACAD

PDM: Rev:L 3

STATUS: Released Printed: Feb 20, 2010

cage code 22526

Tous droits strictement réservés. Reproduction ou communication à des tiers interdite sous quelque forme que ce soit sans autorisation écrite du propriétaire. Property of FCI. Droits de reproduction FCI.



All rights strictly reserved. Reproduction or issue to third parties in any form whatever is not permitted without written authority from the proprietor. Property of FCI. Copyright FCI.

PRODUCT No.	NOTE 8	PORTS No	DIM A ± 0.60 -0.00	DIM B	DIM C ± 0.10	DIM D ± 0.15	GROUND LEG NUMBER ON THE BACK (VIEW B) SEE DIAGRAM ON SHT. 3
95672-X01		1	15.74	-	5.715	11.43	
95672-X01A		1	15.74	-	5.715	11.43	
95672-X02 -YZ		2	30.98	13.97	12.700	25.40	
95672-X03 -YZ		3	44.95	27.94	19.685	39.37	
95672-X04 -YZ		4	58.92	41.91	26.670	53.34	
95672-X05 -YZ		5	72.89	55.88	33.655	67.31	
95672-X06 -YZ		6	86.86	69.85	40.640	81.28	
95672-X07 -YZ		7	100.83	83.82	47.625	95.25	
95672-X08 -YZ		8	114.80	97.79	54.610	109.22	
95672-X09 -YZ		9	128.77	111.76	61.595	123.19	
95672-X10 -YZ		10	142.74	125.73	68.580	137.16	
95672-X11 -YZ		11	156.71	139.70	75.565	151.13	
95672-X12 -YZ		12	170.68	153.67	82.550	165.10	

NOTE 5
NOTE 5

NOTES:

1. RECOMMENDED P.C.B THICKNESS 1.60 MM
2. HOUSING MAT'L: HIGH TEMP RESIN
3. CONTACTS: PHOS BRONZE ALLOY UNS-C51000, \emptyset 0.460 ROUND WIRE, PLATING SEE TABLE.
4. SHIELDING MATERIAL: BRASS ALLOY .25 MM THICK SHIELDING PLATING: NICKEL UNDERPLATE 40u" MIN FINISH OF BRIGHT TIN LEAD 100u" MIN
LEAD FREE OPTION
SHIELDING PLATING: NICKEL UNDERPLATE 40u" MIN FINISH OF BRIGHT PURE TIN 100u" MIN
- ⑤ SEE SNGL. PORT GROUND LEG OPTIONS, SIDE VIEW PG.1 FOR DETAILS.
6. ALL DIMENSIONS IN MILLIMETERS.
- ⑦ COMPANY LOGO LOCATED IN THIS AREA.
- ⑧ ADD LF SUFFIX AT THE END OF PART NUMBER FOR LEAD FREE OPTION.
9. THE HOUSING WILL WITHSTAND EXPOSURE TO 260°C PEAK TEMPERATURE FOR 15 SECONDS IN A WAVE SOLDER APPLICATION WITH A 1.5mm MINIMUM THICK CIRCUIT BOARD. SEE APPLICATION NOTES/PROCEDURES IF THEY ARE AVAILABLE.
10. THIS PRODUCT MEETS EUROPEAN UNION DIRECTIVES AND OTHER COUNTRY REGULATION AS DESCRIBED IN GS-22-008.
- ⑪ PLATING OPTIONS:
MAY BE EITHER GOLD OR GXT PLATED AT MANUFACTURER'S OPTION.

PLATING CODE X	PLATING ⑪
0	30u" G.X.T.
1	15u" GOLD.
3	30u" GOLD.
5	50u" GOLD.

FRONT SHIELD CODE Y
0 = STANDARD GRND. TABS
1 = NO GRND. TABS

REAR SHIELD CODE Z
0 = STANDARD GRND. LEGS
1 = 1 STANDARD GRND. LEG
2 = ALL GRND. LEGS
3 = NO GRND. LEGS

NOTE: PLEASE CHECK FOR AVAILABILITY, NOT ALL OPTIONS AVAILABLE.

mat'l. code		tolerances unless otherwise specified		CUSTOMER COPY		www.fciconnect.com	
ltr	ecn no	dr	date	linear	projection	title	
L						R/A GANG JACK FILTER ASSY	
				angles	MM	product family	MOD JACK
				dr	L.POTTIEGER 3/15/95	size	dwg no
				enr	Y.BELOPOLSKY 3/15/95	scale	213
				chr	Y.BELOPOLSKY 3/15/95	1:1	sheet
				appd	Y.BELOPOLSKY 3/15/95	A	2 of 8
sheet index	revision sheet						

ACAD

PDM: Rev:L 3

STATUS: Released Printed: Feb 20, 2010

1 | 2

3 |

4

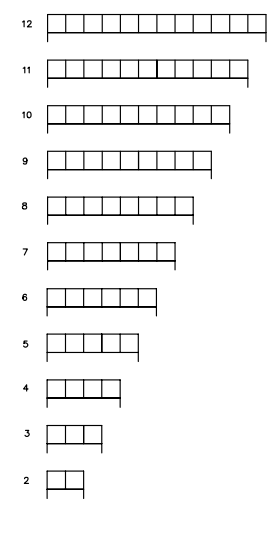
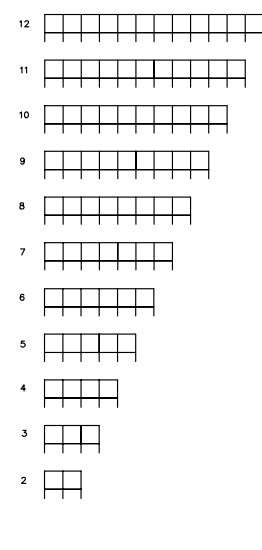
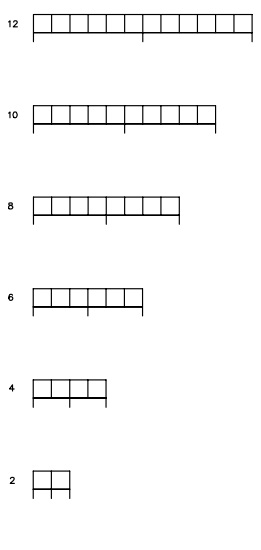
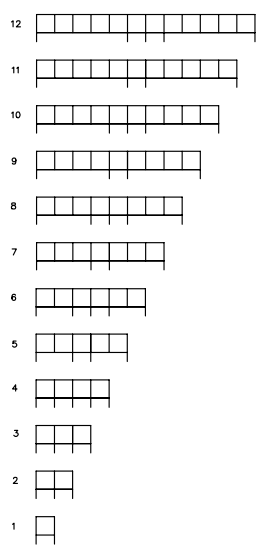
REAR SHIELD (VIEWED FROM PLUG ENTRY SIDE)
GROUND SOLDERTAIL CONFIGURATION

CODE "Z" = 0

CODE "Z" = 1

CODE "Z" = 2

CODE "Z" = 3



PCB LAYOUT SHEET 4

PCB LAYOUT SHEET 5

PCB LAYOUT SHEET 6

PCB LAYOUT SHEET 7

Tous droits strictement réservés. Reproduction ou communication à des tiers sans autorisation écrite de FCI. Propriété de FCI. Droits de reproduction FCI.



All rights strictly reserved. Reproduction or issue to third parties in any form without written authority from the proprietor. Property of FCI. Copyright FCI.

mat'l. code		tolerances unless otherwise specified		CUSTOMER COPY		FCI www.fciconnect.com	
ltr	ecn no	dr	date	linear	projection	title	
L						R/A GANG JACK FILTER ASSY	
				angles		8 POS SHIELDED SNAP PEG	
				dr	MM	product family	MOD JACK
				enrg	1:4	size	dwg no
				chr		95672	
				appd		code	213
sheet index	revision sheet					sheet	3 of 8

1 | 2

3 |

4

ACAD

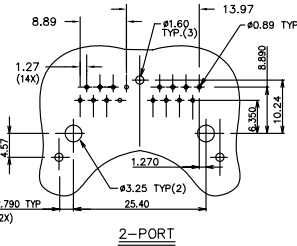
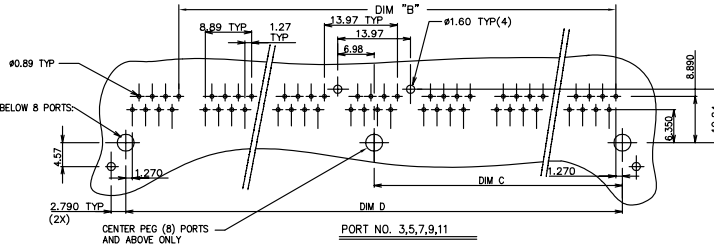
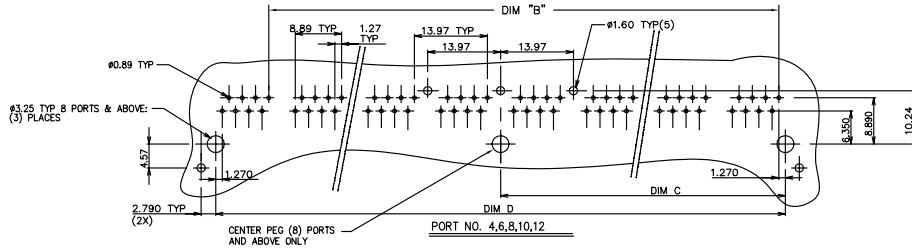
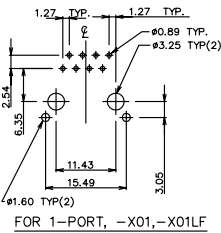
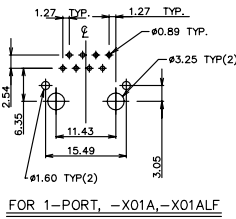
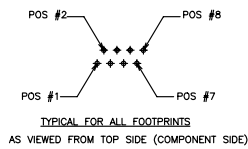
PDM: Rev:L 3

STATUS: Released

cage code 2252 Brinted: Feb 20, 2010

Tous droits strictement réservés. Reproduction ou communication à des tiers interdite sous quelque forme que ce soit sans autorisation écrite du propriétaire. Propriété de c FCI. Droits de reproduction FCI.

All rights strictly reserved. Reproduction or issue to third parties in any form whatever is not permitted without written authority from the proprietor. Property of FCI. Copyright FCI.



RECOMMENDED P.C.B LAYOUT
CODE "Z" = Ø (STANDARD GROUND LEGS)

mat'l. code		tolerances unless otherwise specified		CUSTOMER COPY		FCI		www.fciconnect.com	
ltr	ecn no	dr	date	linear	.XX±.13	projection	title	R/A GANG JACK FILTER ASSY	
L				angles	.XX±.051	MM	product family	MOD JACK	
				dr	0° ±2°	MM	size	dwg no	
				engr	L.POTTIEGER 3/15/95	1:1	scale	95672	
				chr	Y.BELOPOLSKY 3/15/95			code	
				appd	Y.BELOPOLSKY 3/15/95			213	
sheet	revision							sheet	
index	sheet							4 of 8	

ACAD

PDM: Rev:L 3

STATUS: Released

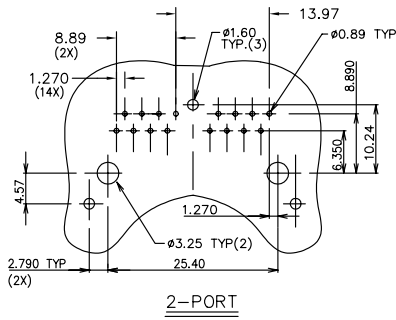
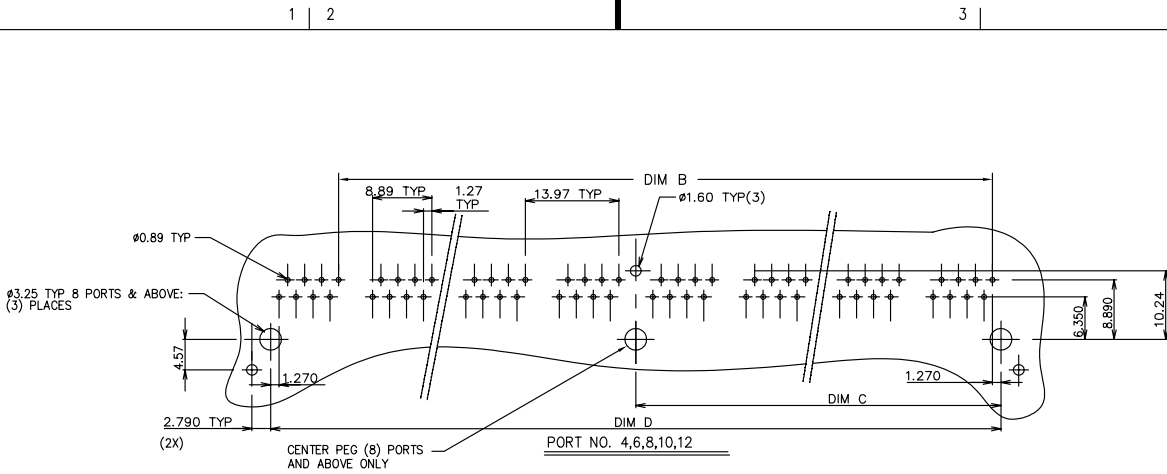
cage code 2252

Printed: Feb 20, 2010

Tous droits strictement réservés. Reproduction ou communication a des tiers interdite sous quelque forme que ce soit sans autorisation écrite du propriétaire. Propriété de c FCI. Droits de reproduction FCI.



All rights strictly reserved. Reproduction or issue to third parties in any form whatever is not permitted without written authority from the proprietor. Property of FCI. Copyright FCI.



RECOMMENDED P.C.B LAYOUT

CODE "Z" = 1 (1 GROUND LEG)

mat'l. code		tolerances unless otherwise specified		CUSTOMER COPY		www.fciconnect.com		
ltr	ecn no	dr	date	linear	.XX±.13	projection	title	
L					.XXX±.051		R/A CAT 5 GANG JACK ASSY	
				angles	0° ±2'		product family	MOD JACK
		dr	G.CLEMENS	6/30/99		MM	size	dwg no
		enrg	B.BRUBAKER	6/30/99		scale	A	95672
		chr	B.BRUBAKER	6/30/99		1:1		code
		appd	B.BRUBAKER	6/30/99				213
sheet index	revision sheet							5 of 8

ACAD

PDM: Rev:L 3

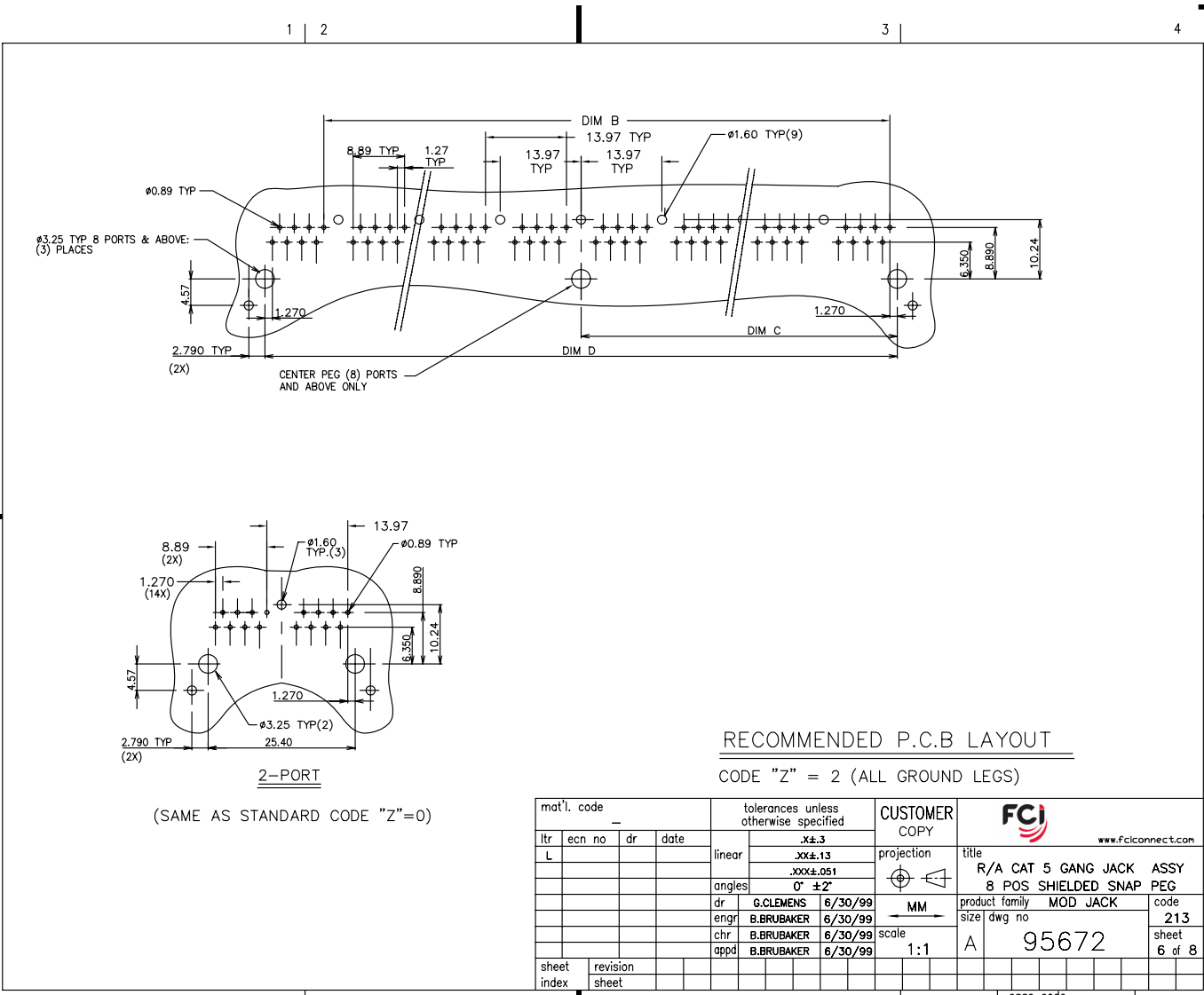
STATUS: Released

Printed: Feb 20, 2010

Tous droits strictement réservés. Reproduction ou communication à des tiers interdite sous quelque forme que ce soit sans autorisation écrite du propriétaire. Propriété de c FCI. Droits de reproduction FCI.



All rights strictly reserved. Reproduction or issue to third parties in any form whatever is not permitted without written authority from the proprietor. Property of FCI. Copyright FCI.



(SAME AS STANDARD CODE "Z"=0)

RECOMMENDED P.C.B LAYOUT
CODE "Z" = 2 (ALL GROUND LEGS)

mat'l. code		tolerances unless otherwise specified		CUSTOMER COPY		FCI		www.fciconnect.com	
ltr	ecn no	dr	date	linear	angles	projection	title		
				.XX±.13	0° ±2'	⊕	R/A CAT 5 GANG JACK ASSY		
				.XXX±.051		MM	8 POS SHIELDED SNAP PEG		
				dr	engr	scale	product family	MOD JACK	code
				G.CLEMENS	B.BRUBAKER	1:1	size		213
				6/30/99	6/30/99		dwg no		sheet
				chr	appd		A	95672	6 of 8
				B.BRUBAKER	B.BRUBAKER				
				6/30/99	6/30/99				
sheet index	revision sheet								

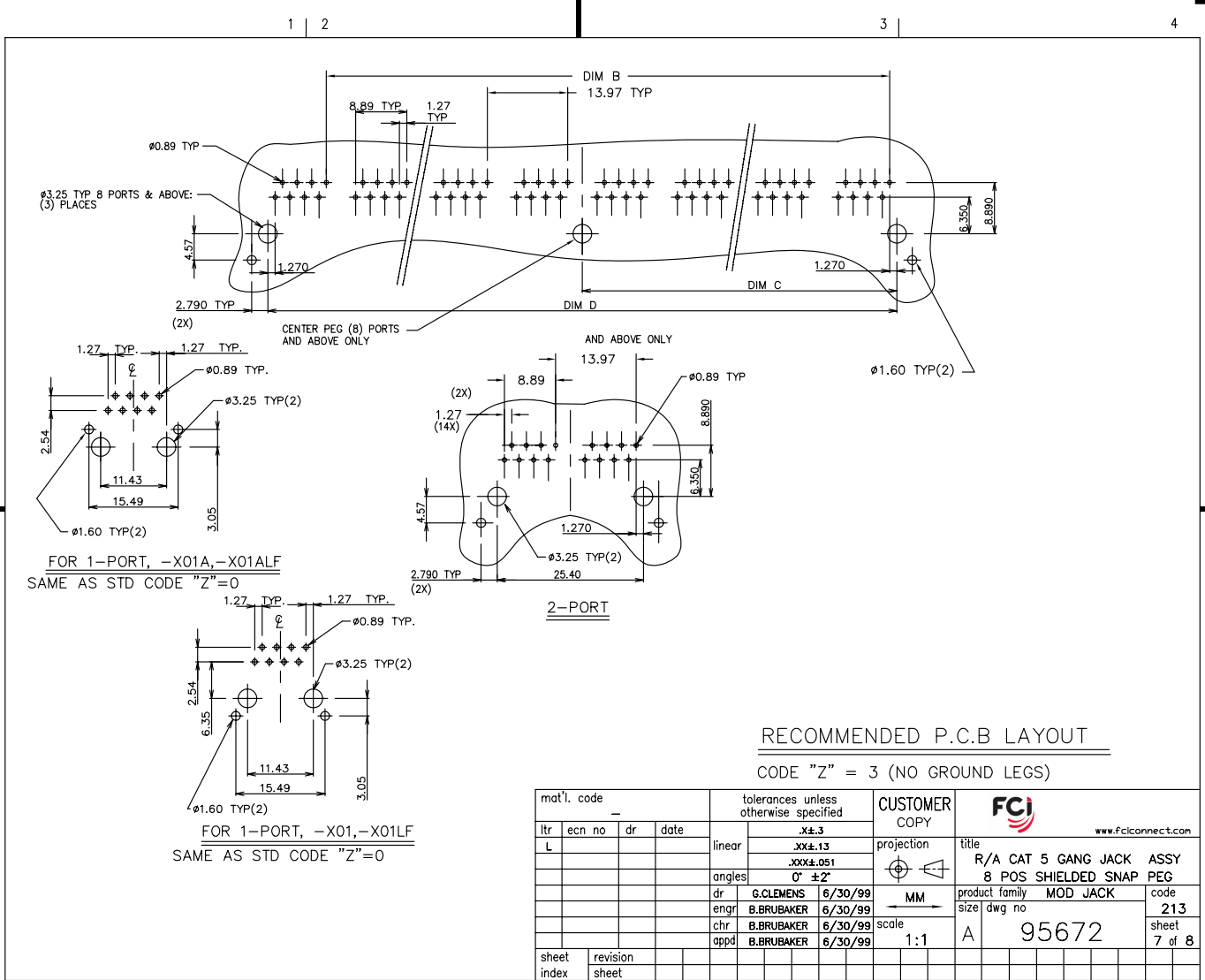
PDM: Rev:L 3 STATUS: Released cage code 2252 Printed: Feb 20, 2010

ACAD

Tous droits strictement réservés. Reproduction ou communication à des tiers interdite sous quelque forme que ce soit sans autorisation écrite du propriétaire. Propriété de c FCI. Droits de reproduction FCI.



All rights strictly reserved. Reproduction or issue to third parties in any form whatever is not permitted without written authority from the proprietor. Property of FCI. Copyright FCI.



FOR 1-PORT, -X01A,-X01ALF
SAME AS STD CODE "Z"=0

2-PORT

FOR 1-PORT, -X01,-X01LF
SAME AS STD CODE "Z"=0

RECOMMENDED P.C.B LAYOUT

CODE "Z" = 3 (NO GROUND LEGS)

mat'l. code				tolerances unless otherwise specified			CUSTOMER COPY		 www.fciconnect.com		
ltr	ecn no	dr	date	linear	.XX±.13	projection		title			
L				angles	.XXX±.051			R/A CAT 5 GANG JACK ASSY			
				dr	0° ±2'			8 POS SHIELDED SNAP PEG			
				engr	G.CLEMENS 6/30/99	MM		product family		code	
				chr	B.BRUBAKER 6/30/99			MOD JACK		213	
				appd	B.BRUBAKER 6/30/99			size dwg no		7 of 8	
sheet index		revision sheet				scale		A		95672	
						1:1					

ACAD

PDM: Rev:L 3

STATUS: Released
cage code 2252 Printed: Feb 20, 2010

Tous droits strictement réservés. Reproduction ou communication à des tiers interdite sous quelque forme que ce soit sans autorisation écrite du propriétaire. Propriété de c FCI. Droits de reproduction FCI.



All rights strictly reserved. Reproduction or issue to third parties in any form whatever is not permitted without written authority from the proprietor. Property of FCI. Copyright FCI.

PRODUCT No.	NOTE 8	PORTS No	DIM A ± 0.60 -0.00	DIM B	DIM C ± 0.10	DIM D ± 0.15	GROUND LEG NUMBER ON THE BACK (VIEW B) SEE DIAGRAM ON SH. 3
95672-X01H		1	15.74	-	5.715	11.43	
95672-X01AH		1	15.74	-	5.715	11.43	
95672-X02H-YZ		2	30.98	13.97	12.700	25.40	
95672-X03H-YZ		3	44.95	27.94	19.685	39.37	
95672-X04H-YZ		4	58.92	41.91	26.670	53.34	
95672-X05H-YZ		5	72.89	55.88	33.655	67.31	
95672-X06H-YZ		6	86.86	69.85	40.640	81.28	
95672-X07H-YZ		7	100.83	83.82	47.625	95.25	
95672-X08H-YZ		8	114.80	97.79	54.610	109.22	
95672-X09H-YZ		9	128.77	111.76	61.595	123.19	
95672-X10H-YZ		10	142.74	125.73	68.580	137.16	
95672-X11H-YZ		11	156.71	139.70	75.565	151.13	
95672-X12H-YZ		12	170.68	153.67	82.550	165.10	

NOTE 5
NOTE 5

NOTES:

1. RECOMMENDED P.C.B THICKNESS 1.60 MM
2. HOUSING MAT'L: HIGH TEMP RESIN
3. CONTACTS: PHOS BRONZE ALLOY UNS-C51000, \varnothing 0.460 ROUND WIRE, PLATING SEE TABLE.
4. SHIELDING MATERIAL: BRASS ALLOY .25 MM THICK SHIELDING PLATING: NICKEL UNDERPLATE 40u" MIN FINISH OF BRIGHT TIN LEAD 100u" MIN
LEAD FREE OPTION
SHIELDING PLATING: NICKEL UNDERPLATE 40u" MIN FINISH OF BRIGHT PURE TIN 100u" MIN
5. SEE SNGL. PORT GROUND LEG OPTIONS, SIDE VIEW PG.1 FOR DETAILS.
6. ALL DIMENSIONS IN MILLIMETERS.
7. COMPANY LOGO LOCATED IN THIS AREA.
8. ADD LF SUFFIX AT THE END OF PART NUMBER FOR LEAD FREE OPTION.
9. THE HOUSING WILL WITHSTAND EXPOSURE TO 260°C PEAK TEMPERATURE FOR 15 SECONDS IN A WAVE SOLDER APPLICATION WITH A 1.5mm MINIMUM THICK CIRCUIT BOARD. SEE APPLICATION NOTES/PROCEDURES IF THEY ARE AVAILABLE.
10. THIS PRODUCT MEETS EUROPEAN UNION DIRECTIVES AND OTHER COUNTRY REGULATION AS DESCRIBED IN GS-22-008.
11. PLATING OPTIONS:
MAY BE EITHER GOLD OR GXT PLATED AT MANUFACTURER'S OPTION.

MEETS PIP PROCESS PRODUCT NO.

PLATING CODE X	PLATING 11
0	30u" G.X.T.
1	15u" GOLD.
3	30u" GOLD.
5	50u" GOLD.

FRONT SHIELD CODE Y
0 = STANDARD GRND. TABS
1 = NO GRND. TABS

REAR SHIELD CODE Z
0 = STANDARD GRND. LEGS
1 = 1 STANDARD GRND. LEG
2 = ALL GRND. LEGS
3 = NO GRND. LEGS

NOTE: PLEASE CHECK FOR AVAILABILITY, NOT ALL OPTIONS AVAILABLE.

mat'l. code		tolerances unless otherwise specified		CUSTOMER COPY		FCI		www.fciconnect.com	
ltr	ecn no	dr	date	linear	projection	title			
						R/A GANG JACK FILTER ASSY			
				angles		8 POS SHIELDED SNAP PEG			
				dr	L.POTTIEGER 3/15/95	MM	product family	MOD JACK	code
				enr	Y.BELOPOLSKY 3/15/95	scale	size	dwg no	213
				chr	Y.BELOPOLSKY 3/15/95	1:1	95672	sheet	8 of 8
				appd	Y.BELOPOLSKY 3/15/95				
sheet index	revision sheet								

PDM: Rev:L 3 STATUS: Released cage code 22526 Printed: Feb 20, 2010

ACAD