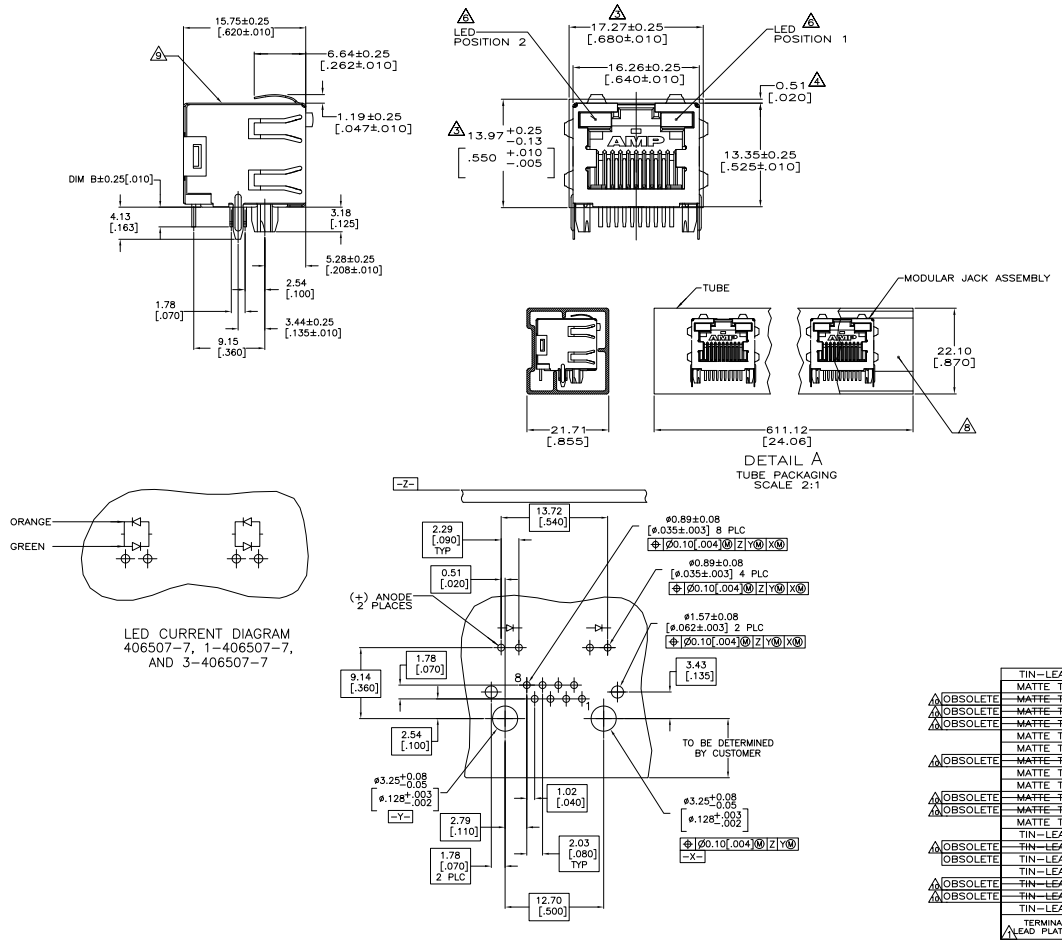


REV	DATE	DESCRIPTION	BY	CHK	APP
AA	00				
K2	REV PER ECR-08-014270		18JAN08	DZ	SY
K3	REVISED PER ECR-09-021828		11JAN10	KK	AEG



- MATERIAL:**
 HOUSING - HIGH TEMPERATURE THERMOPLASTIC, BLACK, UL94V-0
 TERMINALS - 3.36[014] THICK PHOS BRONZE PLATED WITH 3.81μm[000150] MINIMUM THICK (SEE P/N TABLE) IN SOLDER AREA, 1.27μm [000050] MINIMUM GOLD IN LOCALIZED PLATE AREA. ENTIRE TERMINAL PLATED WITH 1.27μm [000050] MINIMUM THICK NICKEL.
 SHIELD - 0.196[0077] THICK COPPER ZINC ALLOY PREPLATED WITH 1.27μm[000050] MINIMUM SATIN NICKEL WITH 2.03μm[000080] MINIMUM TIN POST DIPPED ON PCB GROUND TABS.
 LIGHT EMITTING DIODE (LED) - DIFFUSED EPOXY LENS, 0.51 x 0.51[020 x .020] CARBON STEEL WIREFRAME LEADS PLATED WITH 8.99μm[000350] TIN/COPPER OVER 2.03μm[000080] SILVER OVER 1.02μm[000040] NICKEL UNDERPLATE OVER 2.03μm[000080] COPPER UNDERPLATE.
- JACK CAVITY CONFORMS TO FCC RULES AND REGULATIONS PART 68, SUBPART F.
 - SUGGESTED PANEL OPENING DIMENSIONS.
 - SUGGESTED CLEARANCE BETWEEN TOP OF CONNECTOR AND TOP PANEL OPENING.
 - 0.051[002] WHITE POLYESTER INSULATOR APPLIED TO BACK OF HOUSING.
 - SEE TABLE FOR COLOR OF LEDS AND NUMBER REQUIRED.
 - THIS MODULAR JACK WITH INTEGRATED LED IS NOT IR REFLOW SOLDERING PROCESS COMPATIBLE.
 - PACKAGED 30 PIECES PER TUBE. SEE DETAIL "A".
- MANUFACTURING DATE CODE:**
 LOCATED APPROX. AS SHOWN.
 FIRST 2 DIGITS = LAST 2 DIGITS OF YEAR.
 NEXT 2 DIGITS = MANUFACTURING WORK WEEK.
 LAST DIGIT = DAY OF WEEK WITH SUNDAY = 1.
- OBsolete PARTS:** OBSOLETE CIS STREAMLINING PER D.RENAUD/D.SINISI

TERMINAL LEAD PLATING	DIM B SOLDERTAIL LENGTH	PACKAGING	INDICATOR COLOR	POSITION 2	POSITION 1	PART NUMBER
TIN-LEAD	2.54 [±0.100]	TUBE	GREEN			7-406507-4
MATTE TIN	3.05 [±0.120]	TRAY	ORANGE/GREEN	ORANGE/GREEN		3-406507-7
OBsolete	MATTE TIN 3.05 [±0.120]	TRAY	ORANGE	GREEN		3-406507-5
OBsolete	MATTE TIN 3.05 [±0.120]	TRAY	GREEN	YELLOW		3-406507-4
OBsolete	MATTE TIN 3.05 [±0.120]	TRAY	YELLOW	GREEN		3-406507-1
MATTE TIN	2.54 [±0.100]	TUBE	GREEN			2-406507-4
MATTE TIN	2.54 [±0.100]	TRAY	ORANGE/GREEN	ORANGE/GREEN		1-406507-7
OBsolete	MATTE TIN 2.54 [±0.100]	TRAY	YELLOW	YELLOW		1-406507-6
MATTE TIN	2.54 [±0.100]	TRAY	GREEN			1-406507-5
MATTE TIN	2.54 [±0.100]	TRAY	GREEN	YELLOW		1-406507-4
OBsolete	MATTE TIN 2.54 [±0.100]	TRAY	YELLOW			1-406507-3
OBsolete	MATTE TIN 2.54 [±0.100]	TRAY	GREEN			1-406507-2
MATTE TIN	2.54 [±0.100]	TRAY	YELLOW			1-406507-1
TIN-LEAD	2.54 [±0.100]	TRAY	ORANGE/GREEN	ORANGE/GREEN		406507-7
OBsolete	TIN-LEAD 2.54 [±0.100]	TRAY	YELLOW	YELLOW		406507-6
TIN-LEAD	2.54 [±0.100]	TRAY	GREEN			406507-5
OBsolete	TIN-LEAD 2.54 [±0.100]	TRAY	GREEN	YELLOW		406507-4
OBsolete	TIN-LEAD 2.54 [±0.100]	TRAY	YELLOW			406507-3
OBsolete	TIN-LEAD 2.54 [±0.100]	TRAY	GREEN			406507-2
TIN-LEAD	2.54 [±0.100]	TRAY	YELLOW			406507-1

THIS DRAWING IS A CONTROLLED DOCUMENT.

INCHES: 108-1163-4
 MILLIMETERS: 114-2154

DATE: 11-11-2008
 DRAWN BY: A100779
 CHECKED BY: G-406507

REVISED PER ECR-09-021828

DATE: 11-11-2008

REVISED BY: KK