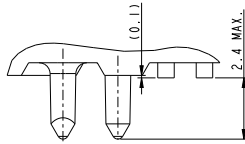
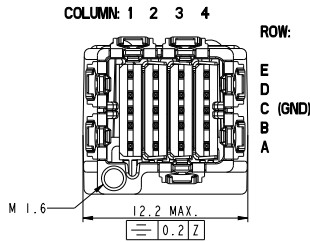
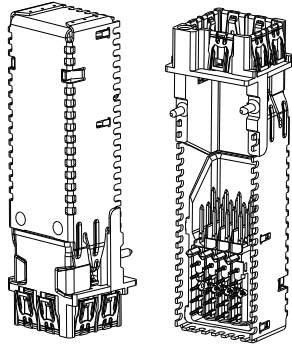
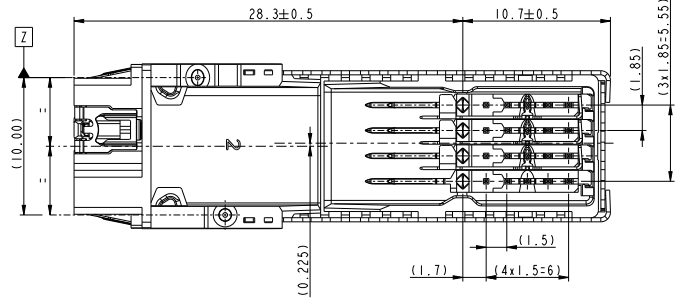
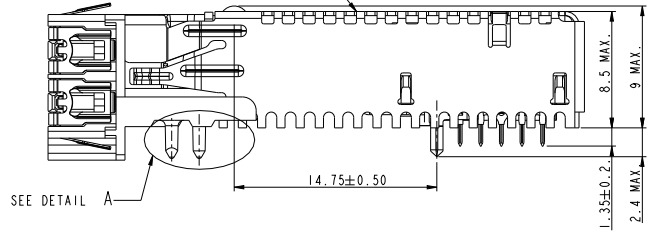
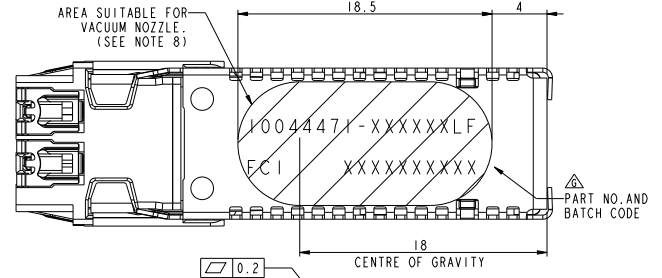


PART NUMBERING	LOADING PATTERN				PACKAGING (SEE NOTE 6)
	COLUMN 1 (NOTE 4)	COLUMN 2	COLUMN 3	COLUMN 4	
10044471-120200LF	UNSHIELDED IMLA	EMPTY	UNSHIELDED IMLA	EMPTY	TAPE ON REEL
10044471-122220LF	UNSHIELDED IMLA	UNSHIELDED IMLA	UNSHIELDED IMLA	UNSHIELDED IMLA	TAPE ON REEL
10044471-121110LF	UNSHIELDED IMLA	SHIELDED IMLA	SHIELDED IMLA	SHIELDED IMLA	TAPE ON REEL



- NOTES:
- MATES WITH CABLE CONNECTOR 10044473-SERIES
 - MATERIALS:
DIECAST-ENTRY: ZINC ALLOY, PLATING/FINISH: Sn PLATED WITH Ni OVER Cu UNDERLAYER,
TOPCOVER - COPPER ALLOY, PLATING/FINISH: Sn PLATED WITH Ni UNDERLAYER,
SPRINGS - STAINLESS STEEL,
RETAINER - HIGH TEMPERATURE FLAME RETARDANT THERMOPLAST, COLOUR NATURAL,
VERTICAL SHIELDS - COPPER ALLOY, PLATING/FINISH: Sn WITH Ni UNDERLAYER,
HEADER IMLA'S - COPPER ALLOY OVERMOLDED WITH HIGH TEMPERATURE FLAME
RETARDANT THERMOPLAST, COLOUR BLACK,
LEADFRAME PLATING/FINISH: NICKEL UNDERPLATING, Au IN CONTACT ZONE, Sn IN SOLDER TAIL AREA.
 - CONNECTOR CAN BE PICKED UP WITH A MECHANICAL GRIPPER OR A VACUUM NOZZLE,
NOZZLE DIAMETER UP TO 9 MM. ESTIMATED MAXIMUM MASS OF THE PRODUCT 6.00 G.
 - COLUMN 1 IS ALWAYS FILLED WITH AN UNSHIELDED IMLA.
 - FCI PRODUCT SPECIFICATION GS-12-314.
 - PACKAGING: TAPE AND REEL ACCORDING TO EIA-481-B, SEE LAST SHEET.
 - THIS PRODUCT MEETS EUROPEAN UNION DIRECTIVES AND OTHER COUNTRY REGULATIONS
AS DESCRIBED IN GS-22-008.
 - THE CONNECTOR WILL WITHSTAND EXPOSURE TO 260°C PEAK TEMPERATURE
IN A CONVECTION, INFRA-RED OR VAPOR PHASE REFLOW OVEN. FOR MORE DETAILS AND
MOUNTING RECOMMENDATIONS, SEE FCI APPLICATION GUIDE GS-20-048.

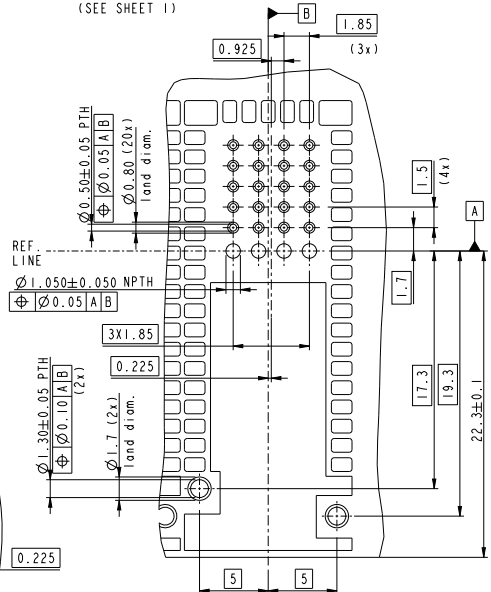


www.fciconnect.com				surface	tolerance std	projection	mm	
				150 1302	150 406	150 1101		
TOLERANCES UNLESS OTHERWISE SPECIFIED								
Dr	P. Poorter	040924	ANGULAR	0.x	±0.3	size	Scale	
Eng	GDr/RWe	040805	LINEAR	0.xxx	±0.1	ECN	2:1	
Chr	R. Weber	040929	°' ±2"	0.xxx	±0.1	Product family	Spec ref	
Appr	G. Droesbeke	040929						
FCI HEADER 8 PAIR							10044471	Rev.
DENS1-SHIELD 1/0							customer copy	sheet 1 of 4
catalog no								

ltr	ech no	dr	date
A	H04-0265	RWE	2004-11-25
B	H05-0016	PEP	2005-03-04
C	H05-0089	PEP	2005-08-31
D	H06-0203	PEP	2006-01-11
E	H06-0139	PEP	2006-11-13
F	D009-0010	TER	2009-02-03
G	D009-0134	TER	2009-04-27

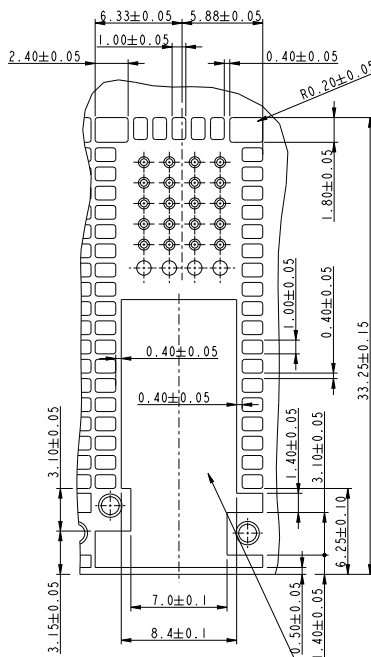
Copyright FCI

RECOMMENDED HOLE PATTERN AND TRACE DIMENSIONS FOR FULLY EQUIPPED BOARD CONNECTORS. (SEE SHEET 1)



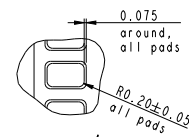
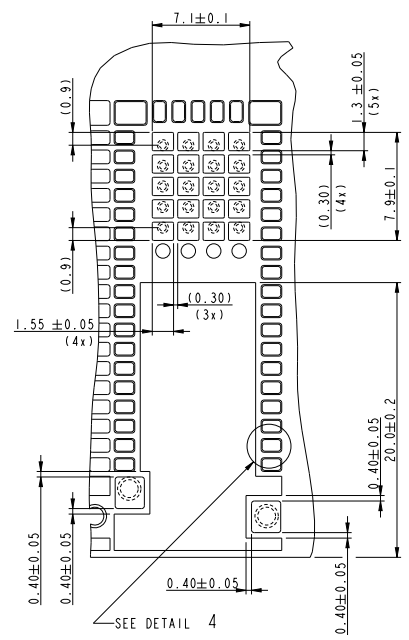
SCALE 5:1

RECOMMENDED ISLAND PATTERN



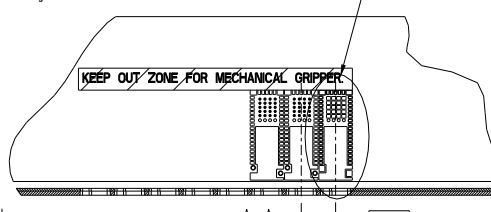
SOLDER MASK NOT ALLOWED ON THIS REFERENCE PLANE AND LANDS. PLATING THICKNESS MUST BE CONSTANT OVER CONTACT AREA.

RECOMMENDED STENCIL LAYOUT MIN. REQUIRED APERTURES FOR STENCIL THICKNESS 0.125 MM



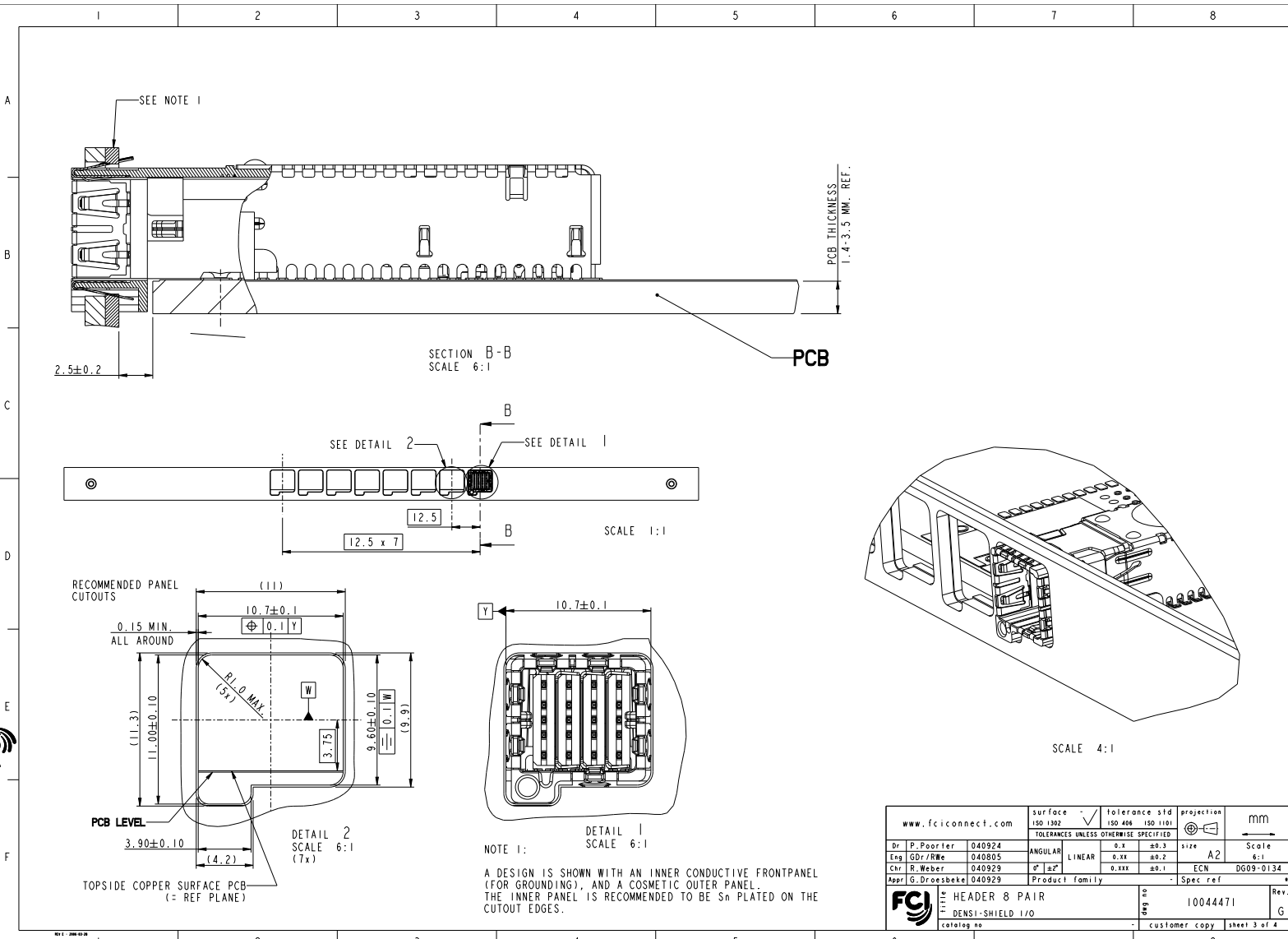
DETAIL 4 SCALE 10:1

THE SOLDER CONTENT IN THE PASTE SHOULD BE SUFFICIENT, TYPICALLY 50% VOLUME PERCENTAGE. THE SCREEN PRINTING PROCESS (ANGLE, SPEED, PRESSURE ETC.) MUST BE OPTIMISED SO THAT ENOUGH SOLDER IS AVAILABLE.



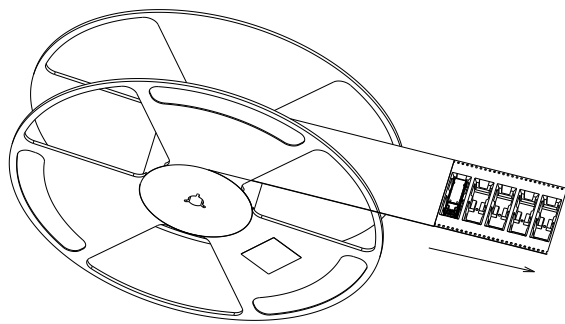
SECTION A-A

www.fciconnect.com		surface 150 1302	tolerance std 150 406	projection 150 1101	mm
TOLERANCES UNLESS OTHERWISE SPECIFIED					
Dr P. Poorter	040924	ANGULAR	0.x	±0.3	Scale
Eng GDr/RWe	040805	LINEAR	0.xx	±0.2	A2
Chr R. Weber	040929	°' ±2"	0.xxx	±0.1	ECN DG09-0134
Appr G. Droesbeke	040929	Product family			Spec ref
FCI HEADER 8 PAIR				10044471	Rev.
DENSIS-SHIELD 1/0				customer copy	sheet 2 of 4
catalog no					G

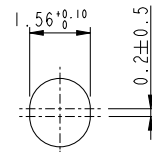


www.fciconnect.com		surface	tolerance std	projection	mm
		ISO 1302	ISO 406	ISO 1101	
TOLERANCES UNLESS OTHERWISE SPECIFIED					
Dr P. Poorter	040924	ANGULAR	0.x	±0.3	size
Eng GDr/RWe	040805	LINEAR	0.xxx	±0.1	A2
Chr R. Weber	040929	°' ±2"	0.xxx	±0.1	ECN
Appr G. Dreesbeke	040929	Product family	Spec ref		
FCI		HEADER 8 PAIR		10044471	Rev.
DENS1-SHIELD 1/0		customer copy		sheet 3 of 4	G
catalog no		PDM: Rev:G		STATUS Released	Printed: Apr 28, 2009

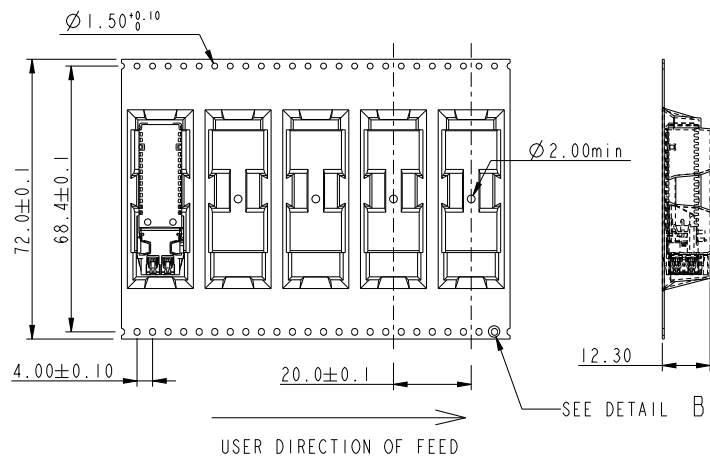
Copyright FCI



SCALE 3:10



DETAIL B
SCALE 10:1



NOTE:
1: MATERIAL CARRIER TAPE: Polystyrene;
2: MATERIAL COVER TAPE : Polyester;
3: THE PACKAGING IS ANTISTATIC TREATED.

www.fciconnect.com			surface ISO 1302	tolerance std ISO 406 ISO 1101	projection mm	mm	
			TOLERANCES UNLESS OTHERWISE SPECIFIED		A3		Scale 1:1
Dr	P. Poorter	040924	ANGULAR	0.X	±0.3	size	
Eng	GDr/RWe	040805	LINEAR	0.XX	±0.2	A3	
Chr	R. Weber	040929	0° ±2°	0.XXX	±0.1	ECN DG09-0134	
Appr	G. Dreesbeke	040929	Product family		- Spec ref		
FCI			TITLE HEADER & PAIR DENSI-SHIELD I/O		dwg no 10044471	Rev. G	
catalog no			- customer copy		sheet 4 of 4		

REV E - 2009-03-28

PDM: Rev:G STATUS Released Printed: Apr 29, 2009