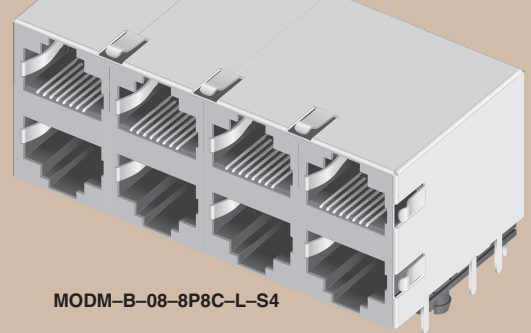
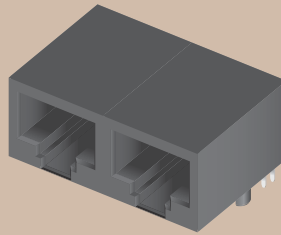


MODM-A-02-8P8C-G



MODM-B-08-8P8C-L-S4

GANGED IN-LINE JACKS MODM-A, MODM-B SERIES

SPECIFICATIONS

For complete specifications and recommended PCB layouts see www.samtec.com?MODM-A

Insulator Material:

PBT Glass Filled

Contact Material:

Phosphor Bronze

Shield Material:

Copper Alloy

Plating:

Gold on Contacts, Nickel on Shield

Operating Temp Range:

-25°C to +90°C

Current Rating:

2 A per Contact

Voltage Rating:

120 VAC

Contact Resistance:

20 mΩ max

Minimum Cycles:

500

System Applications:

CAT3

Packaging:

Packaged and shipped in Bulk Packaging Trays; Trays suitable for automation are available upon request.

RoHS Compliant:

Yes

Lead-Free Solderable:

Yes (Wave Solder only)



MODM - A

NO. OF PORTS

POSITIONS CONTACTS

PLATING

SHIELD OPTION

-02 thru -06, -08, -10

-8P8C = 8 Positions 8 Contacts per port

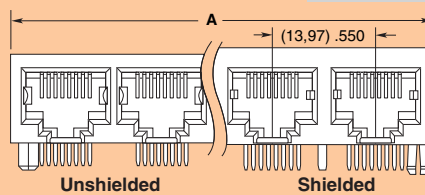
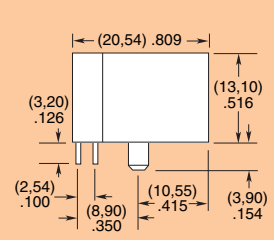
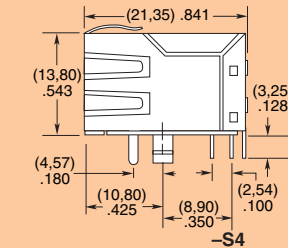
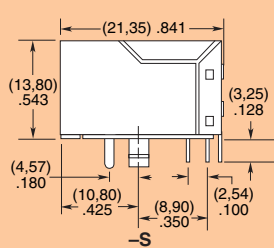
-G = 15μ" (0,38μm) Gold on Mating Area, Gold Flash on Tails

-E = 50μ" (1,27μm) Gold on Mating Area, Gold Flash on Tails

(Leave Blank for Unshielded)

-S = Shielded (No Panel Grounds) (-03 and -10 Not Available)

-S4 = Shielded with Top, Bottom and Side Panel Grounds (Requires -02, -04 or -08 ports)



APPLICATION SPECIFIC OPTION

Other plating options available. Call Samtec.

NO. OF PORTS	A Unshielded	A Shielded
-02	(30,46) 1.199	(31,00) 1.220
-03	(44,43) 1.749	N/A
-04	(58,40) 2.299	(58,94) 2.320
-05	(72,37) 2.849	(72,91) 2.870
-06	(86,34) 3.399	(86,88) 3.420
-08	(114,28) 4.499	(114,90) 4.524
-10	(128,28) 5.050	N/A

SPECIFICATIONS

For complete specifications and recommended PCB layouts see www.samtec.com?MODM-B

Insulator Material:

PBT Glass Filled

Contact Material:

Phosphor Bronze

Shield Material:

Copper Alloy

Plating:

Gold on Contacts, Nickel on Shield, Tin on Tails

Operating Temp Range:

-25°C to +90°C

Current Rating:

1.5 A per contact

Voltage Rating:

120 VAC max

Contact Resistance:

20 mΩ max

Minimum Cycles:

500

System Applications:

CAT3

Packaging:

Packaged and shipped in Bulk Packaging Trays; Trays suitable for automation are available upon request.

RoHS Compliant:

Yes

Lead-Free Solderable:

Yes (Wave Solder only)



MODM - B

NO. OF PORTS

POSITIONS CONTACTS

PLATING

OPTIONS

-02, -04, -06, -08, -12, -16

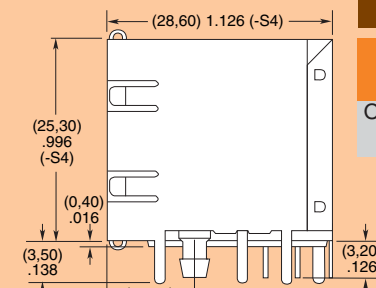
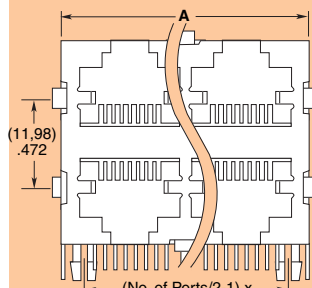
-8P8C = 8 Positions 8 Contacts per port

-L = 15μ" (0,38 μm) Gold on Mating Area, Tin on Tails

-U = 50μ" (1,27μm) Gold on Mating Area, Tin on Tails

(Leave Blank for Unshielded)

-S4 = Shielded with Top, Bottom and Side Panel Grounds (-02 port does not have panel grounds)



APPLICATION SPECIFIC OPTION

Other plating options available. Call Samtec.

NO. OF PORTS	A Unshielded	A Shielded
-02	(16,50) .650	(17,25) 0.679
-04	(30,50) 1.200	(31,25) 1.230
-06	(44,50) 1.752	(45,25) 1.781
-08	(58,50) 2.303	(59,25) 2.333
-12	(86,50) 3.392	(87,25) 3.435
-16	(114,50) 4.508	(115,25) 4.537

Due to technical progress, all designs, specifications and components are subject to change without notice.

WWW.SAMTEC.COM

SAMTEC USA • Tel: 1-800-SAMTEC-9 or 812-944-6733 • Fax: 812-948-5047

SAMTEC SILICON VALLEY • Tel: 408-395-5900 • Fax: 408-395-1520

SAMTEC UK • Tel: 01236 739292 • Fax: 01236 727113

SAMTEC GERMANY • Tel: +49 (0) 89/89460-0 • Fax: +49 (0) 89/89460-299

SAMTEC FRANCE • Tel: 01 60 95 06 60 • Fax: 01 60 95 06 61

SAMTEC ITALY • Tel: 39 039 6890337 • Fax: 39 039 6890315

SAMTEC NORDIC/BALTIC • Tel: +46-84477280 • Fax: +46-87420413

SAMTEC ISRAEL • Tel: 972-3-7526600 • Fax: 972-3-7526690

SAMTEC INDIA • Tel: +91-80-3272 1612 • Fax: +91-80-4152 8187

SAMTEC ASIA PACIFIC • Tel: 65 6745-5955 • Fax: 65 6841-1502

SAMTEC CHINA • Tel: 86-21-61103766 • Fax: 86-21-5423 4575

SAMTEC TAIWAN • Tel: 886-2-2735-6109 • Fax: 886-2-2735-5036

SAMTEC HONG KONG • Tel: 852-2600-8504 • Fax: 852-2600-8241

SAMTEC KOREA • Tel: 82-31-717-5685 • Fax: 82-31-717-5681

SAMTEC SOUTH AFRICA • Tel: 27 11 452 8112 • Fax: 27 86 6714432

SAMTEC ANZ • Tel: 613 9512 7747 • Fax: 613 9512 7745