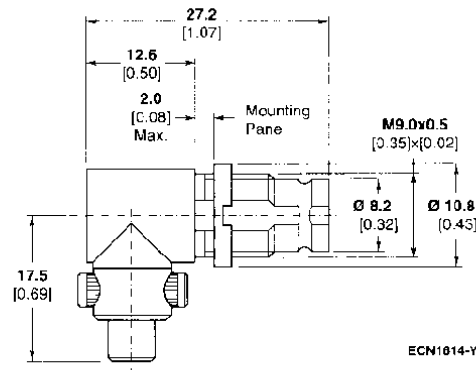


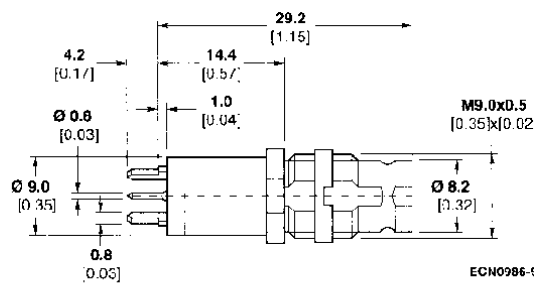
**Series 1.6/5.6 mS (75 Ohm) (Continued)**

**Right Angle Bulkhead Jack,  
IDC Connection**



Cable	Coupling Type	Ø Max.	Part No.
02Y(S)CY 0.45/2.0	A, B, F	3.6 0.14	1-1393757-6

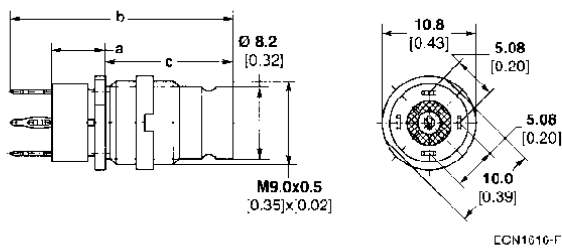
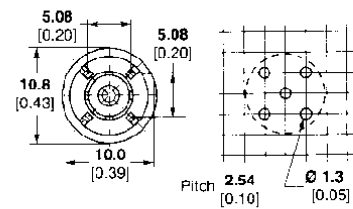
**Vertical PC Board  
Mount Jack**



Coupling Type	Part No.
A, B, F	1-1393681-6

View A

Recommended  
Mounting Holes



**Inner- and outer conductor, press-fit**

Coupling Type	Dim. a	Dim. b	Dim. c	Part No.
A, B, F	6.0 0.24	27.2 1.07	16.4 0.65	2-1393757-0

**Recommended Mounting Holes**

