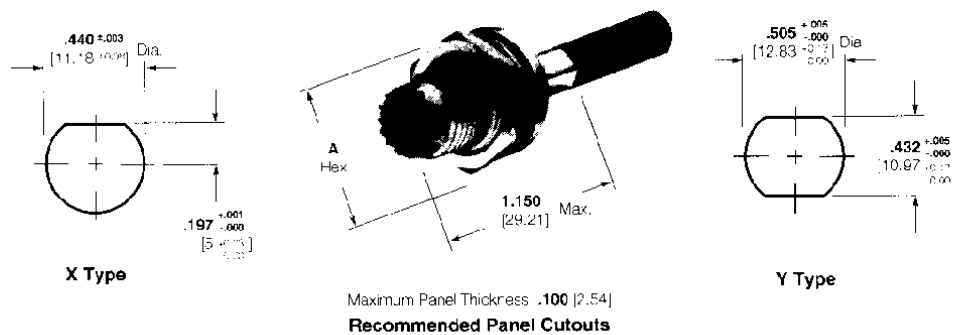


## UHF Connectors, Miniature (Continued)

### Bulkhead Jacks, Crimp



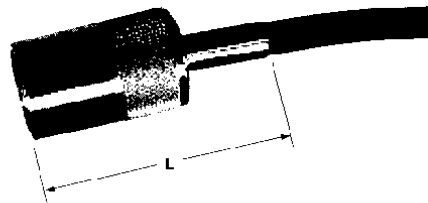
Connector Cable Range Selection Code†	RG/U Cable	Termination Type	Center Contact Plating	Body Plating	Dielectric	Flange Shape	Rubber Gasket	Part No.	Dim. L	Integral Die Hand Tool	Die Insert for Tools: Hand Tool-69710-1 Pneu.-69365, 69365-3	Recommended Panel Cutout Type
E	174, 316, 188, 188A	Dual Crimp	Tin	Nickel	Polypropylene	Hex	No	<b>228665-2</b>	.700 [17.78]	58124-1**	58159-1	Y
		Dual Crimp	Tin	Nickel	Polypropylene	Round	Yes	<b>228903-2</b>	.610 [15.49]	59583-1 58124-1**	58159-1	X
		Dual Crimp	Tin	Nickel	Polypropylene	Round	No	<b>228903-4</b>	.610 [15.49]	59583-1 58124-1**	58159-1	X
D	58, 58A, 58B, 58C	Dual Crimp	Tin	Nickel	Polypropylene	Round	No	<b>228903-3</b>	.610 [15.49]	220149-1 58124-1**	58158-1	X
		Dual Crimp	Tin	Nickel	Polypropylene	Round	No	<b>1-228903-3</b>	.610 [15.49]	220149-1 58124-1**	58158-1	X

†Refer to pages 14 and 15 for code specifications.

\*\*Economy hand tool—does not have CERTI-CRIMP ratchet feature.

Notes: 1. P/N 1-228903-3 uses Contact P/N 226610-2 which is a loose piece screw machine version. All other components are called out on the drawing.  
2. P/N 228903-3 uses Contact P/N 226853-2, which is a strip contact 10,000 pieces per reel also Bulkhead Jack Assembly 414046-1.

### Snap-Lock Plug

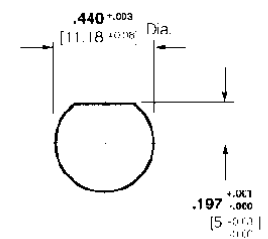


Connector Cable Range Selection Code	RG/U Cable	Termination Type	Center Contact Plating	Body Plating	Dielectric	Part No.	Dim. L
D	58	Dual Crimp	Tin	Nickel	TPX	<b>415011-1</b>	1.35 [34.29]
B	174	Dual Crimp	Tin	Nickel	TPX	<b>415011-2</b>	1.35 [34.29]

### Snap-Lock Jack Bulkhead



Connector Cable Range Selection Code	RG/U Cable	Termination Type	Center Contact Plating	Body Plating	Dielectric	Part No.	Dim. L
D	58	Dual Crimp	Tin	Nickel	TPX	<b>415012-1</b>	1.23 [31.24]
B	174	Dual Crimp	Tin	Nickel	TPX	<b>415012-2</b>	1.23 [31.24]



Recommended Panel Cutout