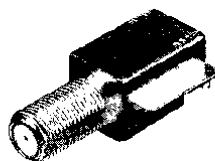


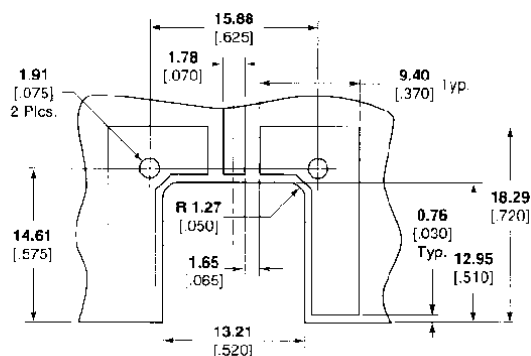
**F Series Connectors (Continued)**

**Surface Mount,  
Straddle Jack**

Contact will accept center conductor diameter range **0.56–1.19** [.022–.047]  
Center of gravity balanced for automated pick and place and anti-tipping during solder reflow process.  
Tin-lead plated body to facilitate soldering process.



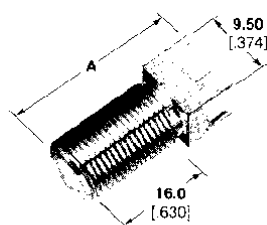
Part No. 1274323-1



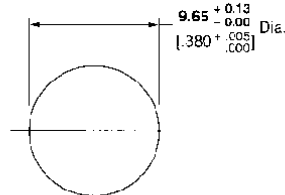
PC Board Layout

**Vertical PC Board Mount  
Jacks**

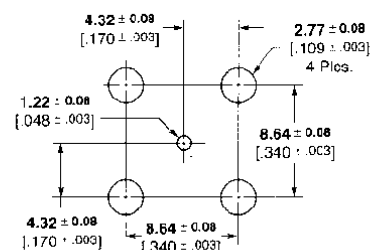
Connector will accept a center conductor diameter of **0.56–1.19** [.022–.047]  
Tin-lead plated body to facilitate soldering process.



(splash resistant)(Dim A = .920)

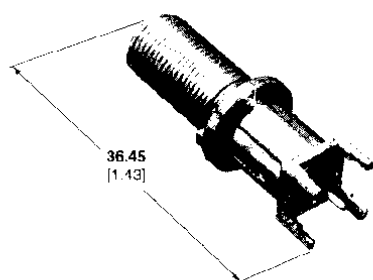


Recommended Panel Cutout

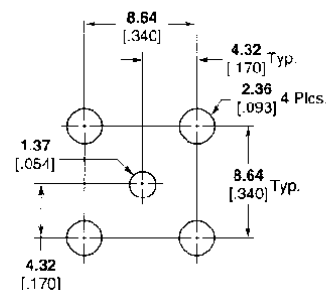
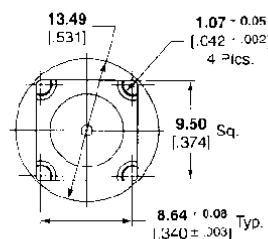


PC Board Layout

Dim. A	Notes	Part No.
.930	—	887046-1
.920	splash resistant	1274423-1



Part No. 1274020-1



PC Board Layout

**Adapters**

**Jack to Jack  
High Performance  
Feed through Adapter**



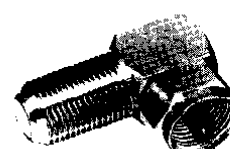
Part No. 282933-2

**Jack to Jack  
Feed through Adapter**



Part No. 282938-2

**Jack to Plug  
Right-Angle Adapter**



Part No. 887089-1