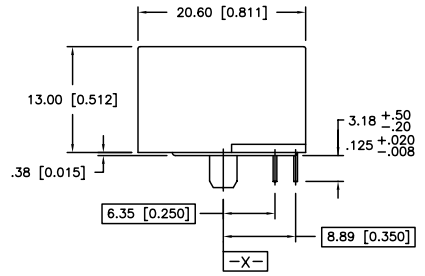
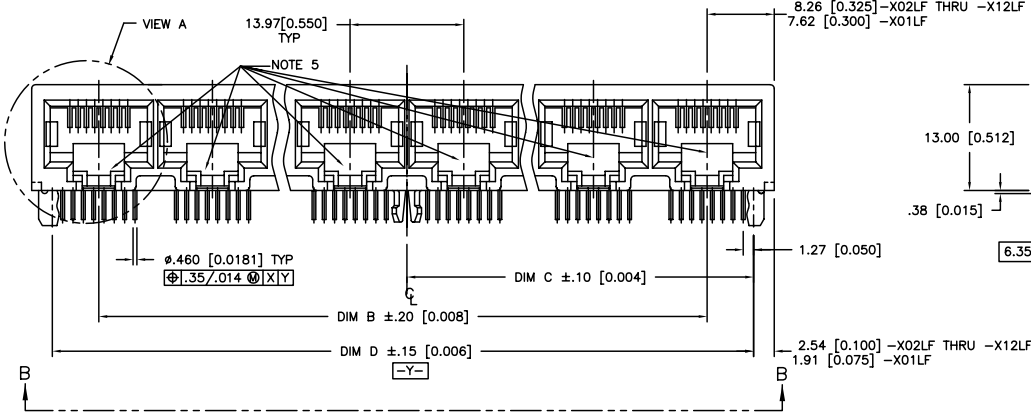
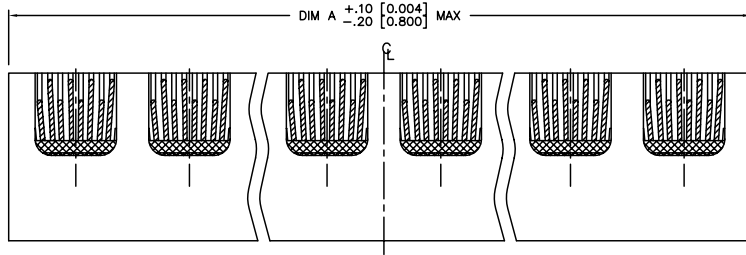

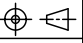


Tous droits strictement réservés. Reproduction ou communication à des tiers interdite sous quelque forme que ce soit sans autorisation écrite du propriétaire. Propriété de c FCI. Droits de reproduction FCI.

All rights strictly reserved. Reproduction or issue to third parties in any form whatever is not permitted without written authority from the proprietor. Property of FCI. Copyright FCI.

PRODUCT NO.
SEE TABLE



mat'l. code				tolerances unless otherwise specified			CUSTOMER COPY		 www.fciconnect.com	
ltr	ecn no	dr	date	linear	.xx ±.01/.X±.3	projection	title			
C	V51452	LSS	12/4/95		.xxx ±.005/.xx±.13		R/A 8 POS GANG JACK ASSY			
D	V60945	MDF	8/27/96		.xxx ±.0020/.xxx±.051		UNSHIELDED DIAMOND PEG			
E	V61463	GAH	1/10/97	angles	0° ±2°	MM/INCH	product family	MOD JACK	code	
F	T80171	CATHY	6/10/98	dr	KCHOU 3/18/93	scale	A 94711		213	
G	V12594	LP	3/20/02	engr	TC 3/18/93	1:1	size		sheet	
H	V03-1103	PJ	10/21/03	chr	J.TSAO 3/18/93				1 of 5	
J	N04-0119	MHT	12/9/04	appd	J.TSAO 3/18/93					
sheet	revision	J	J	J	J					
index	sheet	1	2	3	4	5				

ACAD

PDM: Rev:J

STATUS: Released

Printed: Feb 20, 2010

cage code
22526

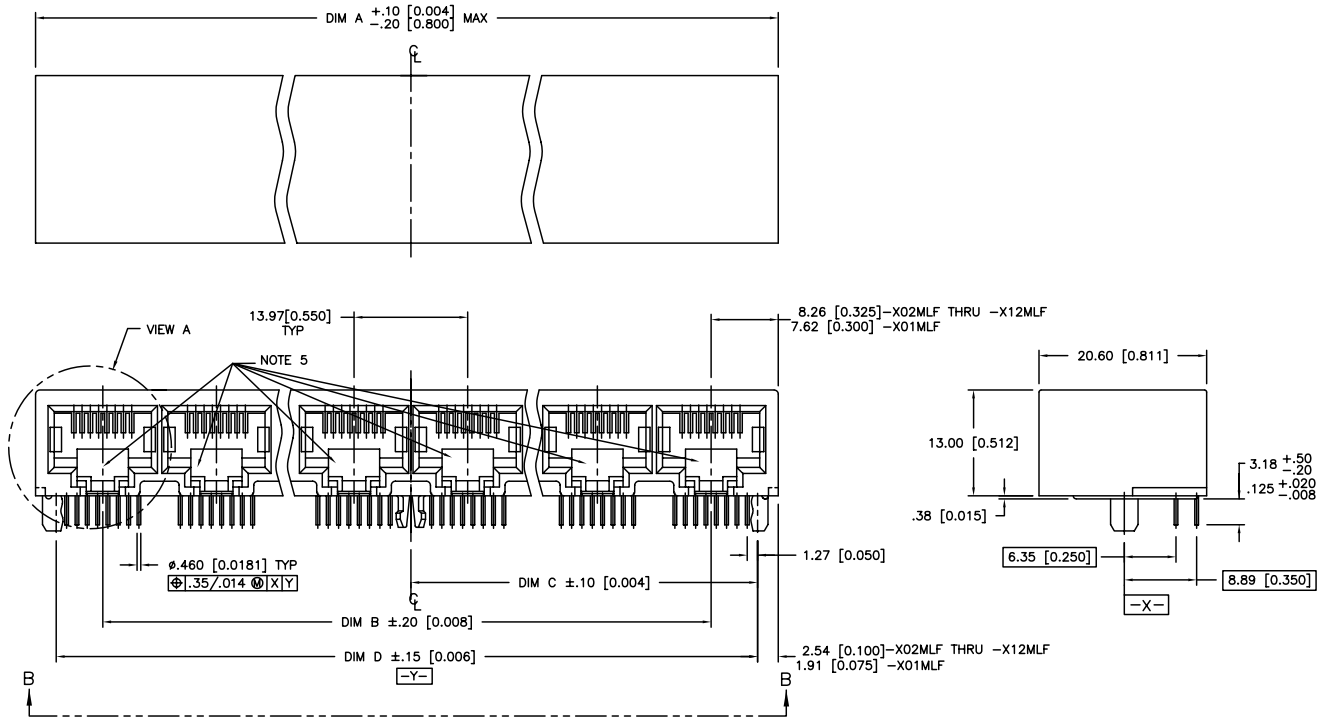
4

Tous droits strictement réservés. Reproduction ou communication à des tiers interdite sous quelque forme que ce soit sans autorisation écrite du propriétaire. Propriété de c FCI. Droits de reproduction FCI.

All rights strictly reserved. Reproduction or issue to third parties in any form whatever is not permitted without written authority from the proprietor. Property of FCI. Copyright FCI.



PRODUCT NO.
SEE TABLE



mat'l. code				tolerances unless otherwise specified				CUSTOMER COPY		 www.fciconnect.com	
ltr	ecn no	dr	date	linear	.xx ±.01/.X±.3	projection			title		
J					.xxx ±.005/.xx±.13		R/A 8 POS GANG JACK ASSY		UNSHIELDED DIAMOND PEG		
				angles	.xxx ±.0020/.xxx±.051	MM/INCH	product family MOD JACK		code		
				dr	0° ±2°	scale	A		213		
				enrg	KCHOU 3/18/93	1:1	94711		sheet		
				chr	TC 3/18/93				2 of		
				appd	J.TSAO 3/18/93						
sheet index	revision sheet								cage code		
									22526		

ACAD

PDM: Rev:J

STATUS: Released

Printed: Feb 20, 2010

1 | 2

3

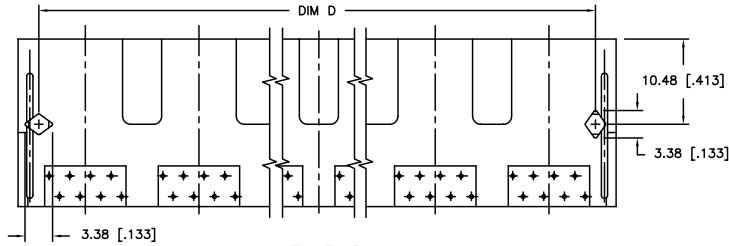
4

Tous droits strictement réservés. Reproduction ou communication à des tiers interdite sous quelque forme que ce soit sans autorisation écrite du propriétaire. Propriété de © FCI. Droits de reproduction FCI.

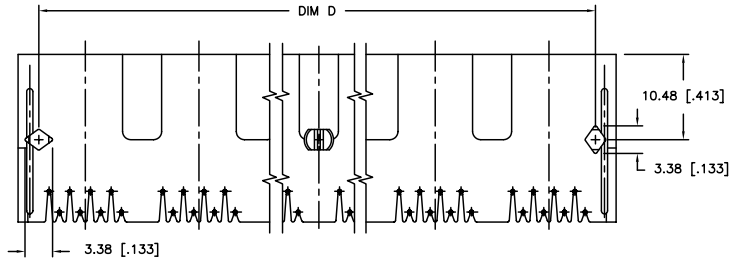
All rights strictly reserved. Reproduction or issue to third parties in any form whatever is not permitted without written authority from the proprietor. Property of FCI. Copyright FCI.



PRODUCT NO.
SEE TABLE



VIEW B-B
-XXXLF PRODUCT ONLY (WITHOUT CENTER PEG - SEE NOTE 4)



VIEW B-B
-XXXMLF PRODUCT ONLY (WITH CENTER PEG - SEE NOTE 3)

mat'l. code				tolerances unless otherwise specified			CUSTOMER COPY		 www.fciconnect.com	
ltr	ecn no	dr	date	linear	.XX ±.01/.X±.3		projection	 title R/A 8 POS GANG JACK ASSY UNSHIELDED DIAMOND PEG		
J					.XXX ±.005/.XX±.13					
				angles	.XXX ±.0020/.XXX±.051		MM/INCH	product family MOD JACK		code
					0° ±2°					scale
				dr	KCHOU	3/18/93	1:1	A		sheet 3 of
				enrg	TC	3/18/93				
				chr	J.TSAO	3/18/93				
				appd	J.TSAO	3/18/93		94711		
sheet index	revision sheet							cage code		
								22526		

ACAD

PDM: Rev:J

STATUS: Released

Printed: Feb 20, 2010

1 | 2

3

4

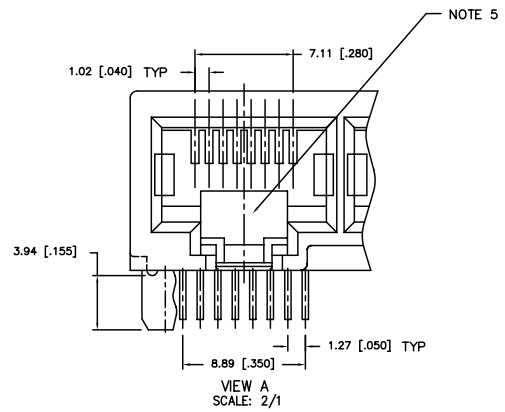
Tous droits strictement réservés. Reproduction ou communication à des tiers interdite sous quelque forme que ce soit sans autorisation écrite du propriétaire. Propriété de © FCI. Droits de reproduction FCI.

All rights strictly reserved. Reproduction or issue to third parties in any form whatever is not permitted without written authority from the proprietor. Property of FCI. Copyright FCI.

PRODUCT No.	NO OF PORTS	DIM A $\begin{matrix} +.10 \\ -.20 \end{matrix}$ $\begin{matrix} [0.004] \\ [0.008] \end{matrix}$	DIM B	DIM C \pm .10 [0.004]	DIM D \pm .15 [0.006]
94711-X01MLF	1	15.24 [0.600]	-----	5.72 [0.225]	11.43 [0.450]
94711-X02MLF	2	30.48 [1.200]	13.97 [0.550]	12.70 [0.500]	25.40 [1.000]
94711-X03MLF	3	44.45 [1.750]	27.94 [1.100]	19.69 [0.775]	39.37 [1.550]
94711-X04MLF	4	58.42 [2.300]	41.91 [1.650]	26.67 [1.050]	53.34 [2.100]
94711-X05MLF	5	72.39 [2.850]	55.88 [2.200]	33.66 [1.325]	67.31 [2.650]
94711-X06MLF	6	86.36 [3.400]	69.85 [2.750]	40.64 [1.600]	81.28 [3.200]
94711-X07MLF	7	100.33 [3.950]	83.82 [3.300]	47.63 [1.875]	95.25 [3.750]
94711-X08MLF	8	114.30 [4.500]	97.79 [3.850]	54.61 [2.150]	109.22 [4.300]
94711-X09MLF	9	128.27 [5.050]	111.76 [4.400]	61.60 [2.425]	123.19 [4.850]
94711-X10MLF	10	142.24 [5.600]	125.73 [4.950]	68.58 [2.700]	137.16 [5.400]
94711-X11MLF	11	156.21 [6.150]	139.70 [5.500]	75.57 [2.975]	151.13 [5.950]
94711-X12MLF	12	170.18 [6.700]	153.67 [6.050]	82.55 [3.250]	165.10 [6.500]

PRODUCT No.	NO OF PORTS	DIM A $\begin{matrix} +.10 \\ -.20 \end{matrix}$ $\begin{matrix} [0.004] \\ [0.008] \end{matrix}$	DIM B	DIM C \pm .10 [0.004]	DIM D \pm .15 [0.006]
94711-X01LF	1	15.24 [0.600]	-----	5.72 [0.225]	11.43 [0.450]
94711-X02LF	2	30.48 [1.200]	13.97 [0.550]	12.70 [0.500]	25.40 [1.000]
94711-X03LF	3	44.45 [1.750]	27.94 [1.100]	19.69 [0.775]	39.37 [1.550]
94711-X04LF	4	58.42 [2.300]	41.91 [1.650]	26.67 [1.050]	53.34 [2.100]
94711-X05LF	5	72.39 [2.850]	55.88 [2.200]	33.66 [1.325]	67.31 [2.650]
94711-X06LF	6	86.36 [3.400]	69.85 [2.750]	40.64 [1.600]	81.28 [3.200]
94711-X07LF	7	100.33 [3.950]	83.82 [3.300]	47.63 [1.875]	95.25 [3.750]
94711-X08LF	8	114.30 [4.500]	97.79 [3.850]	54.61 [2.150]	109.22 [4.300]
94711-X09LF	9	128.27 [5.050]	111.76 [4.400]	61.60 [2.425]	123.19 [4.850]
94711-X10LF	10	142.24 [5.600]	125.73 [4.950]	68.58 [2.700]	137.16 [5.400]
94711-X11LF	11	156.21 [6.150]	139.70 [5.500]	75.57 [2.975]	151.13 [5.950]
94711-X12LF	12	170.18 [6.700]	153.67 [6.050]	82.55 [3.250]	165.10 [6.500]

NOTE: PLEASE CHECK FOR AVAILABILITY, NOT ALL OPTIONS AVAILABLE.



PLATING CODE X	PLATING
0	.76uM/30u" G.X.T.
1	.38uM/15u" GOLD
3	.76uM/30u" GOLD
5	1.27uM/50u" GOLD

NOTES:

1. APPLICABLE PC BOARD THICKNESS: 1.60 [0.062].
2. CONTACTS: PHOSPHOR BRONZE ALLOY UNS-C51000, ϕ .460 [0.0181] ROUND WIRE, SEE TABLE FOR PLATING.
- ③ CENTER PEG FOR 8 PORTS AND ABOVE, (-XXXMLF PRODUCT ONLY).
- ④ NO CENTER PEG FOR -XXXLF PRODUCT.
5. COMPANY LOGO LOCATED IN THIS AREA.
6. PART NUMBERS WITH LF IN THE END ARE LEAD FREE
7. THIS PRODUCT MEETS EUROPEAN UNION DIRECTIVES AND OTHER COUNTRY REGULATION AS DESCRIBED IN GS-22-008.
8. THE HOUSING WITHSTAND EXPOSURE TO 260° PEAK TEMPERATURE FOR 15 SECONDS IN CONVENTION INFRA-RED OR VAPOR PHASE REFLOW OVEN.

mat'l. code				tolerances unless otherwise specified		CUSTOMER COPY		 www.fciconnect.com	
ltr	ecn	no	dr	date	linear	.xx \pm .01 / .x \pm .3	projection	title	R/A 8 POS GANG JACK ASSY UNSHIELDED DIAMOND PEG
J						.xxx \pm .005 / .xxx \pm .13		product family	
					angles	.xxx \pm .0020 / .xxx \pm .051	MM/INCH	MOD JACK	code
					dr	0° \pm 2°	scale	size	213
					engr	KCHOU 3/18/93	1:1	dwg no	94711
					chr	TC 3/18/93			sheet
					appd	J.TSAO 3/18/93			4 of
sheet index	revision sheet								

1 | 2

ACAD

PDM: Rev:J

STATUS: Released

Printed: Feb 20, 2010

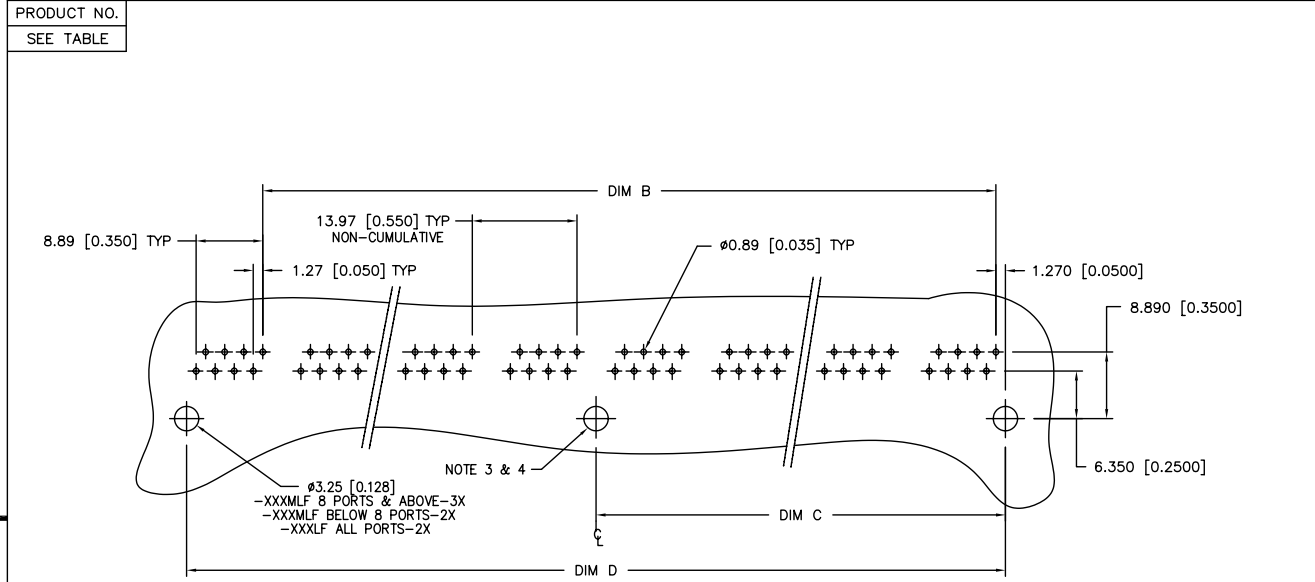
cage code
22526

3 | 4

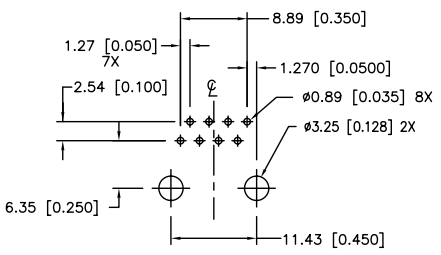
Tous droits strictement réservés. Reproduction ou communication à des tiers interdite sous quelque forme que ce soit sans autorisation écrite du propriétaire. Propriété de c FCI. Droits de reproduction FCI.



All rights strictly reserved. Reproduction or issue to third parties in any form whatever is not permitted without written authority from the proprietor. Property of FCI. Copyright FCI.



RECOMMENDED PC BOARD LAYOUT
(2 THRU 12 PORTS)



RECOMMENDED PC BOARD LAYOUT
(1 PORT)

mat'l. code		tolerances unless otherwise specified		CUSTOMER COPY		www.fciconnect.com	
ltr	ecn no	dr	date	linear	projection	title	
J				.XX ±.01/.X±.3		R/A 8 POS GANG JACK ASSY	
				.XXX ±.005/.XX±.13		UNSHIELDED DIAMOND PEG	
				.XXXX ±.0020/.XXX±.051	MM/INCH	product family	MOD JACK
				angles	scale	size	code
				0° ±2°	1:1	94711	213
				dr		dwg no	sheet
				enrg			5 of
				chr			
				appd			
sheet index	revision sheet						

ACAT

PDM: Rev:J

STATUS: Released

Printed: Feb 20, 2010