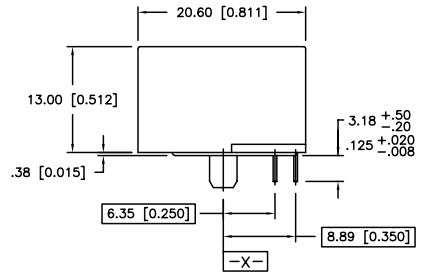
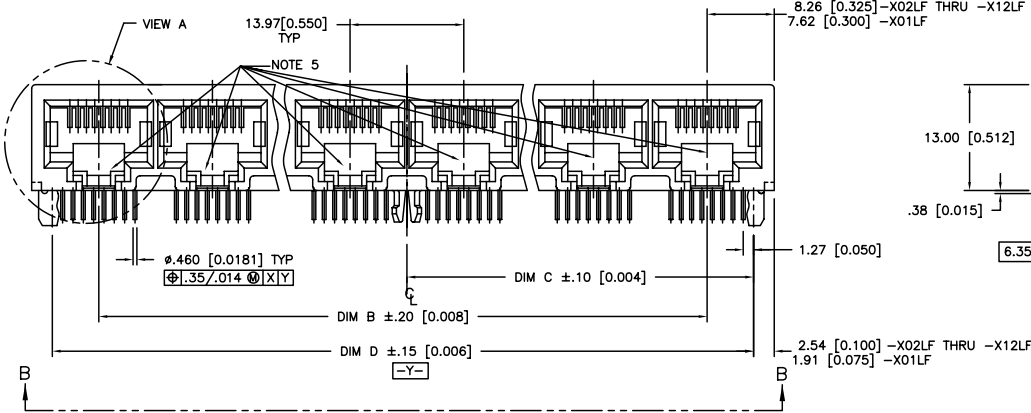
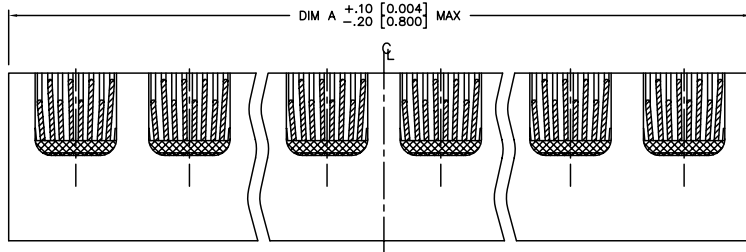


Tous droits strictement réservés. Reproduction ou communication à des tiers interdite sous quelque forme que ce soit sans autorisation écrite du propriétaire. Propriété de c FCI. Droits de reproduction FCI.

All rights strictly reserved. Reproduction or issue to third parties in any form whatever is not permitted without written authority from the proprietor. Property of FCI. Copyright FCI.



PRODUCT NO.
SEE TABLE



mat'l. code				tolerances unless otherwise specified			CUSTOMER COPY		FCI www.fciconnect.com	
ltr	ecn no	dr	date	linear	.xx ±.01/.X±.3	projection	title			
C	V51452	LSS	12/4/95		.xxx ±.005/.xx±.13		R/A 8 POS GANG JACK ASSY			
D	V60945	MDF	8/27/96		.xxx ±.0020/.xxx±.051		UNSHIELDED DIAMOND PEG			
E	V61463	GAH	1/10/97	angles	0° ±2°	MM/INCH	product family	MOD JACK	code	
F	T80171	CATHY	6/10/98	dr	KCHOU 3/18/93	scale	size	dwg no	213	
G	V12594	LP	3/20/02	engr	TC 3/18/93	1:1	94711		sheet	1 of 5
H	V03-1103	PJ	10/21/03	chr	J.TSAO 3/18/93					
J	N04-0119	MHT	12/9/04	appd	J.TSAO 3/18/93					
sheet index	revision sheet	J 1	J 2	J 3	J 4	J 5	cage code		4	
							22526			

ACAD

PDM: Rev:J

STATUS: Released

Printed: Aug 01, 2010

1 | 2

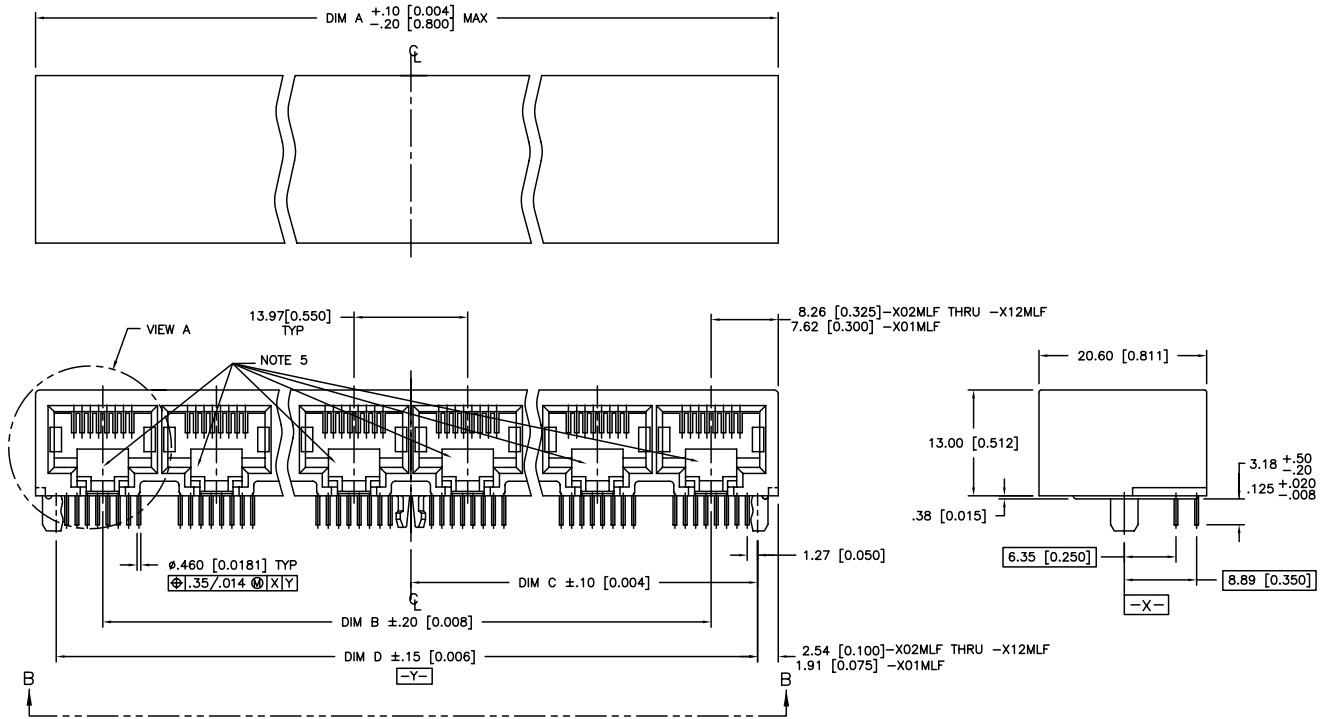
3


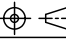
4

Tous droits strictement réservés. Reproduction ou communication à des tiers interdite sous quelque forme que ce soit sans autorisation écrite du propriétaire. Propriété de c FCI. Droits de reproduction FCI.

All rights strictly reserved. Reproduction or issue to third parties in any form whatever is not permitted without written authority from the proprietor. Property of FCI. Copyright FCI.

PRODUCT NO.
SEE TABLE



mat'l. code				tolerances unless otherwise specified				CUSTOMER COPY		 www.fciconnect.com	
ltr	ecn no	dr	date	linear	.xx ±.01/.X±.3	projection	 MM/INCH		title		
J					.xxx ±.005/.xx±.13				R/A 8 POS GANG JACK ASSY		
				angles	.xxx ±.0020/.xxx±.051		product family		MOD JACK	code	
				dr	0° ±2°	scale	size		dwg no	213	
				enrg	KCHOU 3/18/93	1:1	A		94711	sheet	
				chr	TC 3/18/93					2 of	
				appd	J.TSAO 3/18/93						
sheet index	revision sheet								cage code		
									22526		

ACAD

PDM: Rev:J

STATUS: Released

Printed: Aug 01, 2010

1 | 2

3

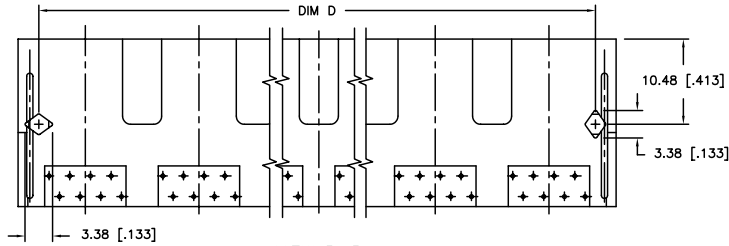
4

Tous droits strictement réservés. Reproduction ou communication à des tiers interdite sous quelque forme que ce soit sans autorisation écrite du propriétaire. Propriété de © FCI. Droits de reproduction FCI.

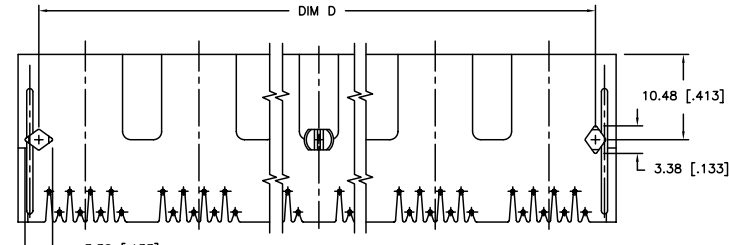
All rights strictly reserved. Reproduction or issue to third parties in any form whatever is not permitted without written authority from the proprietor. Property of FCI. Copyright FCI.



PRODUCT NO.
SEE TABLE



VIEW B-B
-XXXLF PRODUCT ONLY (WITHOUT CENTER PEG - SEE NOTE 4)



VIEW B-B
-XXXMLF PRODUCT ONLY (WITH CENTER PEG - SEE NOTE 3)

mat'l. code				tolerances unless otherwise specified				CUSTOMER COPY		 www.fciconnect.com	
ltr	ecn no	dr	date	linear	.xx ±.01/.X±.3			projection	title		
J					.xxx ±.005/.xx±.13				R/A 8 POS GANG JACK ASSY		
				angles	.xxx ±.0020/.xxx±.051			 MM/INCH	product family		code
					0° ±2°				MOD JACK		213
				dr	KCHOU	3/18/93	scale	1:1	A	94711	sheet 3 of
				enrg	TC	3/18/93					
				chr	J.TSAO	3/18/93					
				appd	J.TSAO	3/18/93					
sheet index	revision sheet										

ACAD

PDM: Rev:J

STATUS: Released

Printed: Aug 01, 2010

cage code
22526

1 | 2

3

4

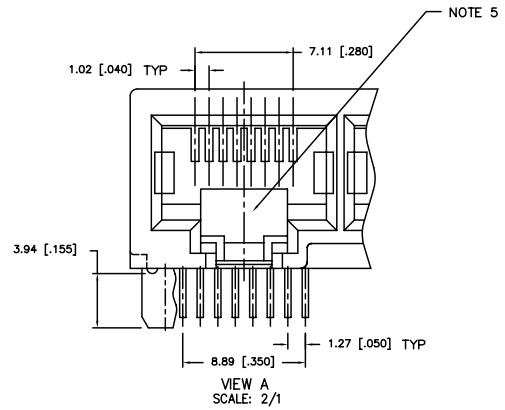
Tous droits strictement réservés. Reproduction ou communication à des tiers interdite sous quelque forme que ce soit sans autorisation écrite du propriétaire. Propriété de © FCI. Droits de reproduction FCI.

All rights strictly reserved. Reproduction or issue to third parties in any form whatever is not permitted without written authority from the proprietor. Property of FCI. Copyright FCI.

PRODUCT No.	NO OF PORTS	DIM A $\begin{smallmatrix} +.10 \\ -.20 \end{smallmatrix}$ $\begin{smallmatrix} [0.004] \\ [0.008] \end{smallmatrix}$	DIM B	DIM C \pm .10 [0.004]	DIM D \pm .15 [0.006]
94711-X01MLF	1	15.24 [0.600]	-----	5.72 [0.225]	11.43 [0.450]
94711-X02MLF	2	30.48 [1.200]	13.97 [0.550]	12.70 [0.500]	25.40 [1.000]
94711-X03MLF	3	44.45 [1.750]	27.94 [1.100]	19.69 [0.775]	39.37 [1.550]
94711-X04MLF	4	58.42 [2.300]	41.91 [1.650]	26.67 [1.050]	53.34 [2.100]
94711-X05MLF	5	72.39 [2.850]	55.88 [2.200]	33.66 [1.325]	67.31 [2.650]
94711-X06MLF	6	86.36 [3.400]	69.85 [2.750]	40.64 [1.600]	81.28 [3.200]
94711-X07MLF	7	100.33 [3.950]	83.82 [3.300]	47.63 [1.875]	95.25 [3.750]
94711-X08MLF	8	114.30 [4.500]	97.79 [3.850]	54.61 [2.150]	109.22 [4.300]
94711-X09MLF	9	128.27 [5.050]	111.76 [4.400]	61.60 [2.425]	123.19 [4.850]
94711-X10MLF	10	142.24 [5.600]	125.73 [4.950]	68.58 [2.700]	137.16 [5.400]
94711-X11MLF	11	156.21 [6.150]	139.70 [5.500]	75.57 [2.975]	151.13 [5.950]
94711-X12MLF	12	170.18 [6.700]	153.67 [6.050]	82.55 [3.250]	165.10 [6.500]

PRODUCT No.	NO OF PORTS	DIM A $\begin{smallmatrix} +.10 \\ -.20 \end{smallmatrix}$ $\begin{smallmatrix} [0.004] \\ [0.008] \end{smallmatrix}$	DIM B	DIM C \pm .10 [0.004]	DIM D \pm .15 [0.006]
94711-X01LF	1	15.24 [0.600]	-----	5.72 [0.225]	11.43 [0.450]
94711-X02LF	2	30.48 [1.200]	13.97 [0.550]	12.70 [0.500]	25.40 [1.000]
94711-X03LF	3	44.45 [1.750]	27.94 [1.100]	19.69 [0.775]	39.37 [1.550]
94711-X04LF	4	58.42 [2.300]	41.91 [1.650]	26.67 [1.050]	53.34 [2.100]
94711-X05LF	5	72.39 [2.850]	55.88 [2.200]	33.66 [1.325]	67.31 [2.650]
94711-X06LF	6	86.36 [3.400]	69.85 [2.750]	40.64 [1.600]	81.28 [3.200]
94711-X07LF	7	100.33 [3.950]	83.82 [3.300]	47.63 [1.875]	95.25 [3.750]
94711-X08LF	8	114.30 [4.500]	97.79 [3.850]	54.61 [2.150]	109.22 [4.300]
94711-X09LF	9	128.27 [5.050]	111.76 [4.400]	61.60 [2.425]	123.19 [4.850]
94711-X10LF	10	142.24 [5.600]	125.73 [4.950]	68.58 [2.700]	137.16 [5.400]
94711-X11LF	11	156.21 [6.150]	139.70 [5.500]	75.57 [2.975]	151.13 [5.950]
94711-X12LF	12	170.18 [6.700]	153.67 [6.050]	82.55 [3.250]	165.10 [6.500]

NOTE: PLEASE CHECK FOR AVAILABILITY, NOT ALL OPTIONS AVAILABLE.



PLATING CODE X	PLATING
0	.76uM/30u" G.X.T.
1	.38uM/15u" GOLD
3	.76uM/30u" GOLD
5	1.27uM/50u" GOLD

NOTES:

1. APPLICABLE PC BOARD THICKNESS: 1.60 [0.062].
2. CONTACTS: PHOSPHOR BRONZE ALLOY UNS-C51000, ϕ .460 [0.0181] ROUND WIRE, SEE TABLE FOR PLATING.
- ③ CENTER PEG FOR 8 PORTS AND ABOVE, (-XXXMLF PRODUCT ONLY).
- ④ NO CENTER PEG FOR -XXXLF PRODUCT.
5. COMPANY LOGO LOCATED IN THIS AREA.
6. PART NUMBERS WITH LF IN THE END ARE LEAD FREE
7. THIS PRODUCT MEETS EUROPEAN UNION DIRECTIVES AND OTHER COUNTRY REGULATION AS DESCRIBED IN GS-22-008.
8. THE HOUSING WITHSTAND EXPOSURE TO 260° PEAK TEMPERATURE FOR 15 SECONDS IN CONVENTION INFRA-RED OR VAPOR PHASE REFLOW OVEN.

mat'l. code				tolerances unless otherwise specified		CUSTOMER COPY		 www.fciconnect.com	
ltr	ecn	no	dr	date	linear	.xx \pm .01 / X \pm .3	projection	title	R/A 8 POS GANG JACK ASSY UNSHIELDED DIAMOND PEG
J						.xxx \pm .005 / xxx \pm .13		product family	
					angles	.xxx \pm .0020 / xxx \pm .051	MM/INCH	size	MOD JACK
					dr	0° \pm 2°	scale	dwg no	code
					enr		1:1	A	213
					chr			94711	sheet
					appd				4 of
sheet index	revision sheet								

1 | 2

ACAD

PDM: Rev:J

STATUS: Released

Printed: Aug 01, 2010

cage code
22526

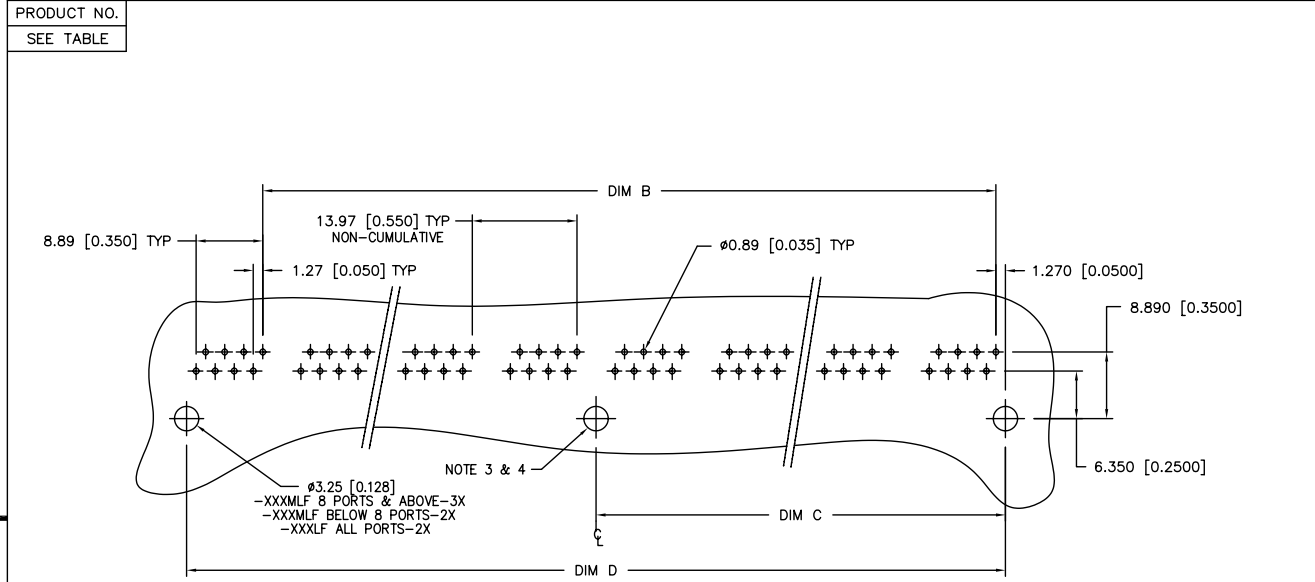
3 |

4

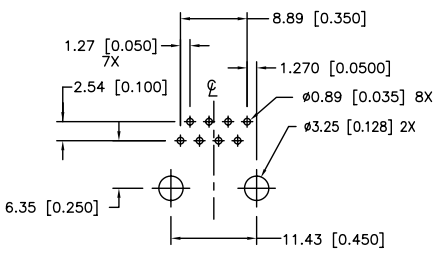
Tous droits strictement réservés. Reproduction ou communication à des tiers interdite sous quelque forme que ce soit sans autorisation écrite du propriétaire. Propriété de c FCI. Droits de reproduction FCI.



All rights strictly reserved. Reproduction or issue to third parties in any form whatever is not permitted without written authority from the proprietor. Property of FCI. Copyright FCI.



RECOMMENDED PC BOARD LAYOUT
(2 THRU 12 PORTS)



RECOMMENDED PC BOARD LAYOUT
(1 PORT)

mat'l. code		tolerances unless otherwise specified		CUSTOMER COPY		www.fciconnect.com	
ltr	ecn no	dr	date	linear	projection	title	
J				.XX ±.01/.X±.3		R/A 8 POS GANG JACK ASSY	
				.XXX ±.005/.XX±.13		UNSHIELDED DIAMOND PEG	
				.XXXX ±.0020/.XXX±.051	MM/INCH	product family	MOD JACK
				angles	1:1	size	code
				0° ±2°		94711	213
				dr		dwg no	sheet
				enrg			5 of
				chr			
				appd			
sheet index	revision sheet						

ACAT

PDM: Rev:J

STATUS: Released

Printed: Aug 04, 2010