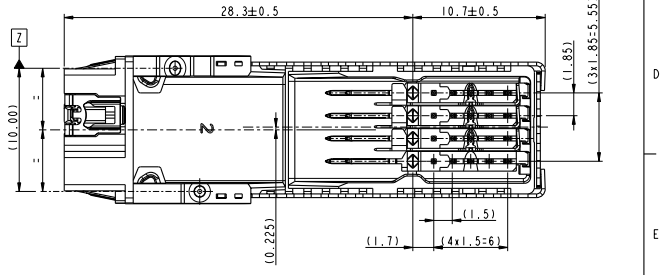
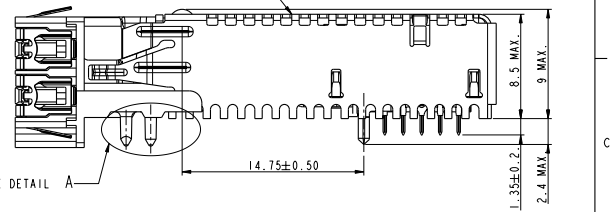
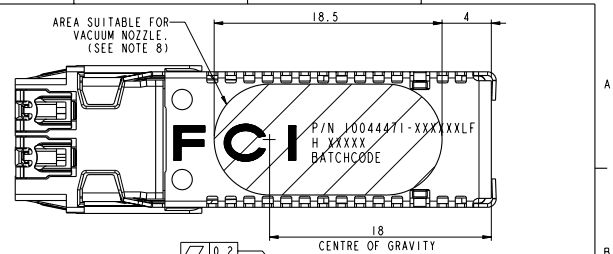
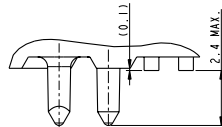
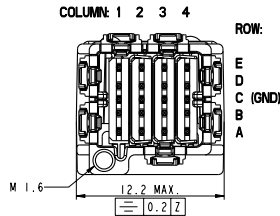
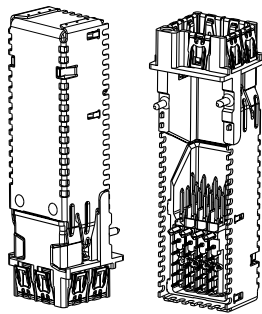


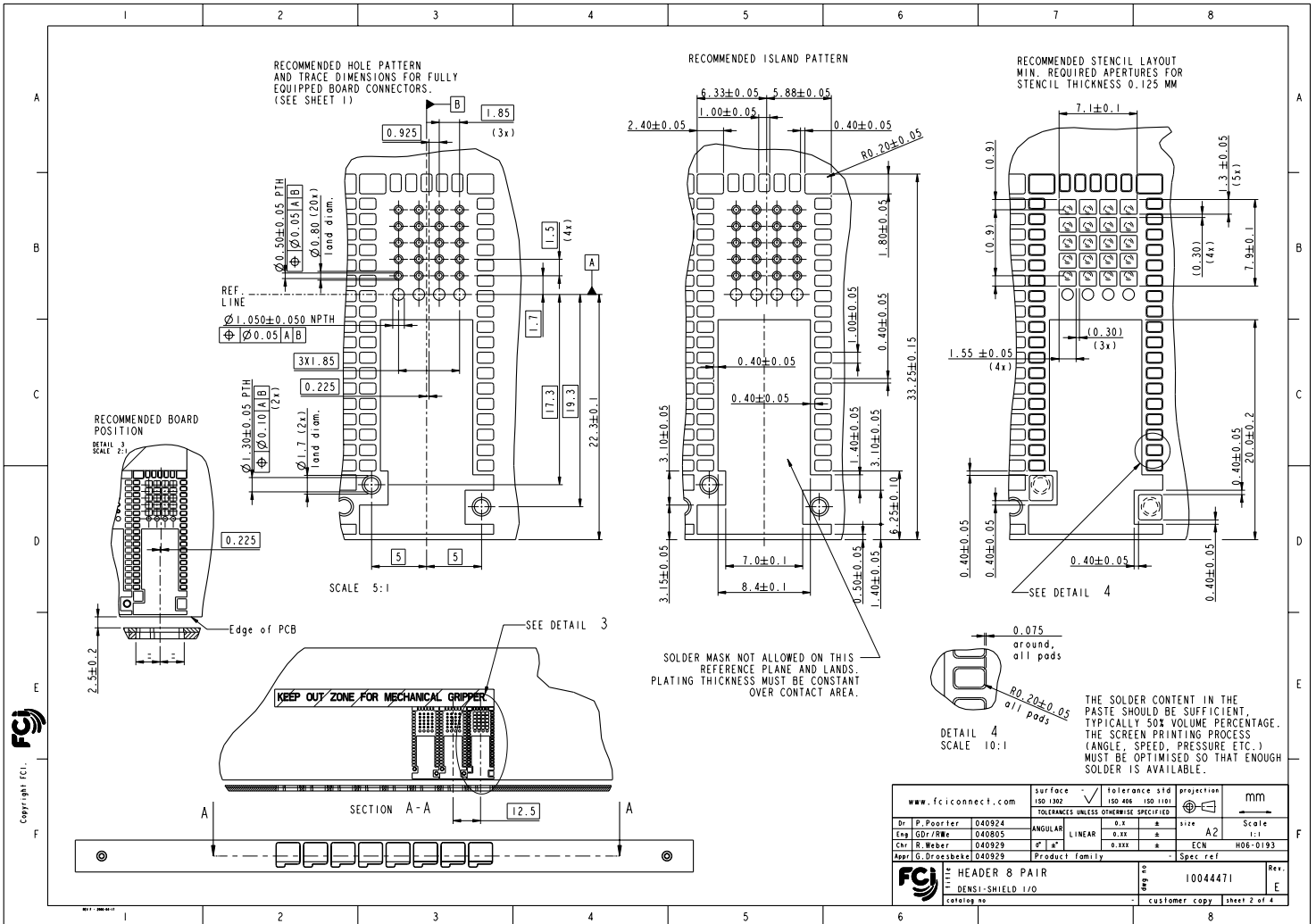
PART NUMBERING	LOADING PATTERN				PACKAGING (SEE NOTE 6)
	COLUMN 1 (NOTE 4)	COLUMN 2	COLUMN 3	COLUMN 4	
10044471-120200LF	UNSHIELDED IMLA	EMPTY	UNSHIELDED IMLA	EMPTY	TAPE ON REEL
10044471-122220LF	UNSHIELDED IMLA	UNSHIELDED IMLA	UNSHIELDED IMLA	UNSHIELDED IMLA	TAPE ON REEL
10044471-121110LF	UNSHIELDED IMLA	SHIELDED IMLA	SHIELDED IMLA	SHIELDED IMLA	TAPE ON REEL

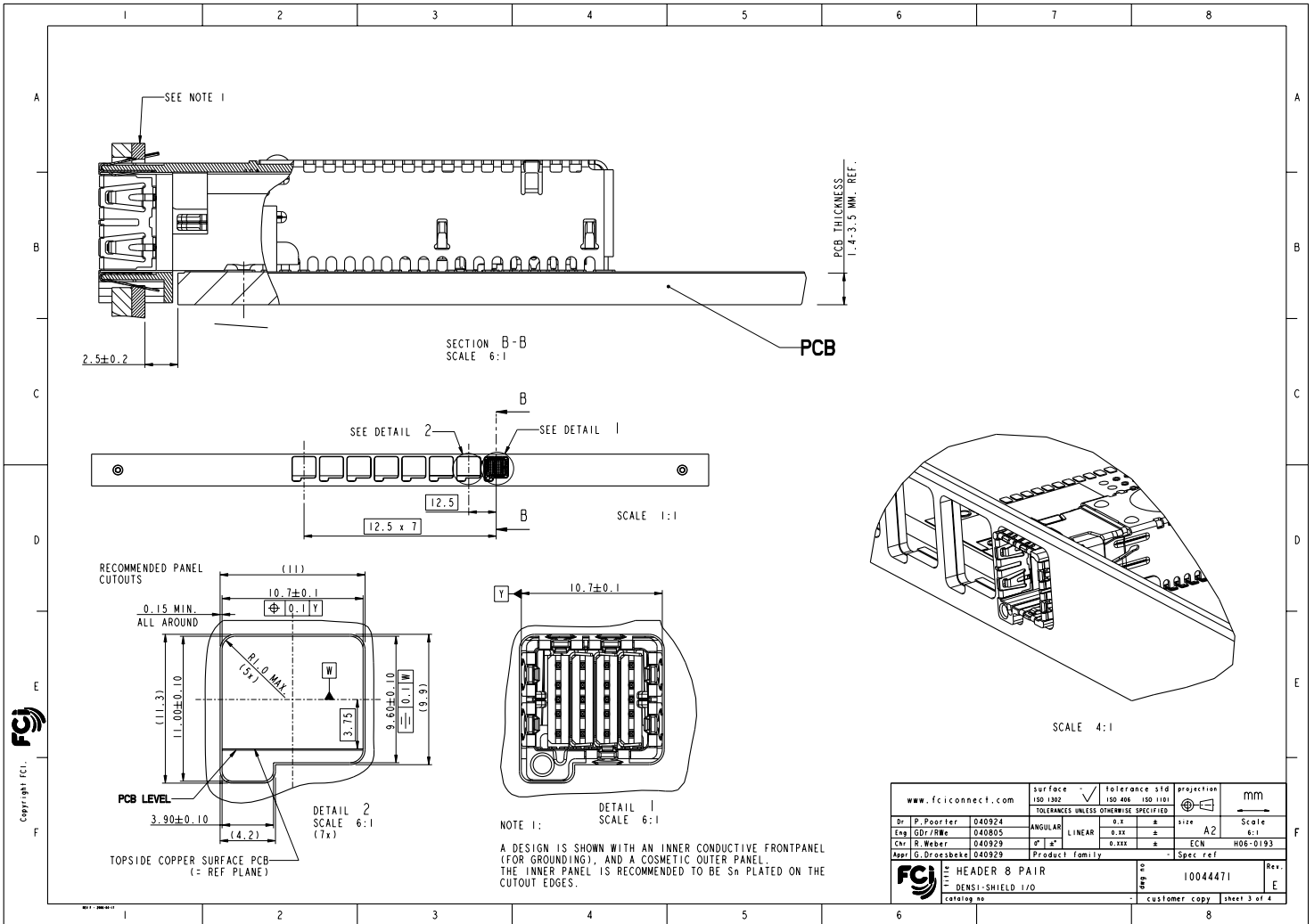


- NOTES:
- MATES WITH CABLE CONNECTOR 10044473-SERIES
 - MATERIALS:
DIECAST ENTRY: ZINC ALLOY, PLATING/FINISH: Sn PLATED WITH Ni OVER Cu UNDERLAYER,
TOPCOVER - COPPER ALLOY, PLATING/FINISH: Sn PLATED WITH Ni UNDERLAYER,
SPRINGS - STAINLESS STEEL,
RETAINER - HIGH TEMPERATURE FLAME RETARDANT THERMOPLAST, COLOUR NATURAL,
VERTICAL SHIELDS - COPPER ALLOY, PLATING/FINISH: Sn WITH Ni UNDERLAYER,
HEADER IMLA'S - COPPER ALLOY OVERMOLDED WITH HIGH TEMPERATURE FLAME
RETARDANT THERMOPLAST, COLOUR BLACK,
LEADFRAME PLATING/FINISH: NICKEL UNDERPLATING, Au IN CONTACT ZONE, Sn IN SOLDER TAIL AREA.
 - CONNECTOR CAN BE PICKED UP WITH A MECHANICAL GRIPPER OR A VACUUM NOZZLE,
NOZZLE DIAMETER UP TO 9 MM. ESTIMATED MAXIMUM MASS OF THE PRODUCT 6.00 G.
 - COLUMN 1 IS ALWAYS FILLED WITH AN UNSHIELDED IMLA.
 - FCI PRODUCT SPECIFICATION GS-12-314.
 - PACKAGING: TAPE AND REEL ACCORDING TO E1A-481-B, SEE LAST SHEET.
 - THIS PRODUCT MEETS EUROPEAN UNION DIRECTIVES AND OTHER COUNTRY REGULATIONS
AS DESCRIBED IN GS-22-008.
 - THE CONNECTOR WILL WITHSTAND EXPOSURE TO 260°C PEAK TEMPERATURE
IN A CONVECTION, INFRA-RED OR VAPOR PHASE REFLOW OVEN. FOR MORE DETAILS AND
MOUNTING RECOMMENDATIONS, SEE FCI APPLICATION GUIDE GS-20-048.

Copyright FCI

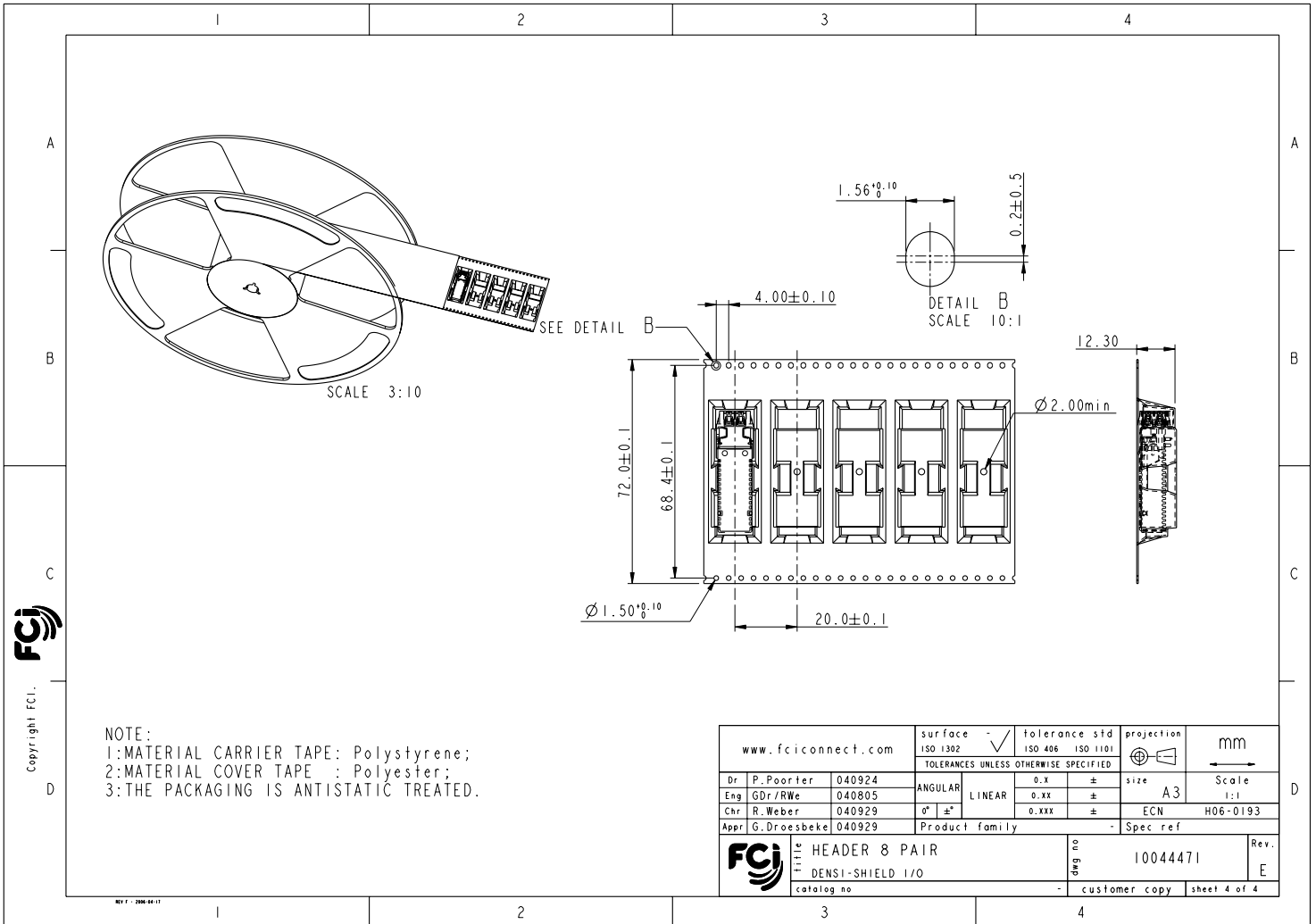
www.fciconnect.com		surface	tolerance std	projection	mm
		150 1302	150 406 150 1101	Ⓢ	
		TOLERANCES UNLESS OTHERWISE SPECIFIED			
Dr P. Poortier	040924	ANGULAR	0.25	mm	Scale
Eng GDr/RMe	040805	LINEAR	0.25	mm	2:1
Chr R. Weber	040929	0° 90°	0.25	mm	ECN
Appr G. Droesbeke	040929	Product family			H06-0193
		Product family			Spec ref
Rev. 1	040929	FCI HEADER 8 PAIR		10044471	Rev.
Rev. 2	041113	DENSI-SHIELD 1/0			E
		customer copy	sheet 1 of 4		





www.fciconnect.com	surface ISO 1302	tolerance std ISO 406 ISO 1101	projection mm
Dr. P. Poortier 040924	ANGULAR	0.25	size A2
Eng. G. Dr. Weber 040805	LINEAR	0.25	Scale 6:1
Chr. R. Weber 040929	0° 0°	0.25	ECN H06-0193
Appr. G. Dreesbeke 040929	Product family		Spec ref
FCI	HEADER 8 PAIR	10044471	Rev. E
	DENSI-SHIELD 1/0	customer copy	sheet 3 of 4
	catalog no.		

PDM: Rev:E STATUS:Released Printed: Dec 26, 2008



NOTE:
 1: MATERIAL CARRIER TAPE: Polystyrene;
 2: MATERIAL COVER TAPE : Polyester;
 3: THE PACKAGING IS ANTISTATIC TREATED.

www.fciconnect.com		surface - ✓ ISO 1302	tolerance std ISO 406 ISO 1101	projection mm
		TOLERANCES UNLESS OTHERWISE SPECIFIED		size A3
Dr P. Poorter	040924	ANGULAR	LINEAR	Scale 1:1
Eng GDr/RWe	040805	0.X ±	0.xx ±	ECN H06-0193
Chr R. Weber	040929	0° ±*	0.xxx ±	
Appr G. Droesbeker	040929	Product family		Spec ref
FCI title HEADER 8 PAIR DENSI-SHIELD 1/0		dwg no 10044471		Rev. E
catalog no		customer copy		sheet 4 of 4