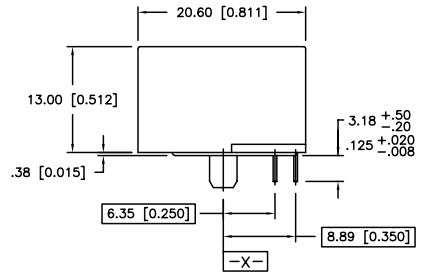
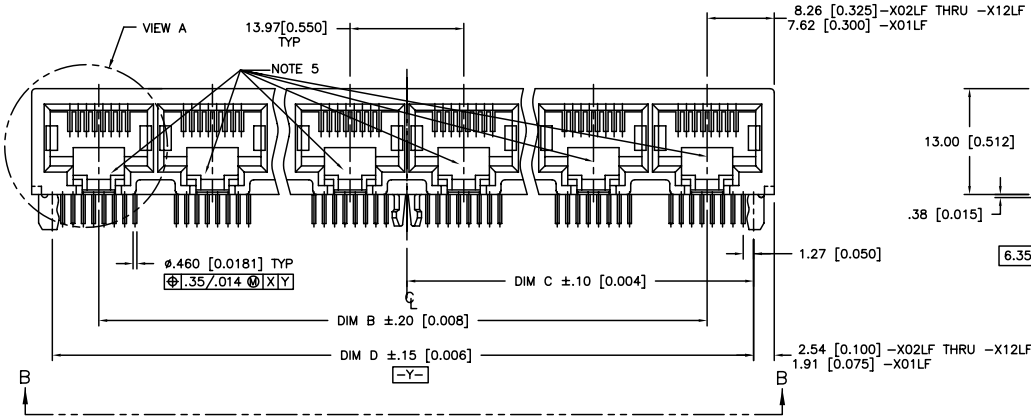
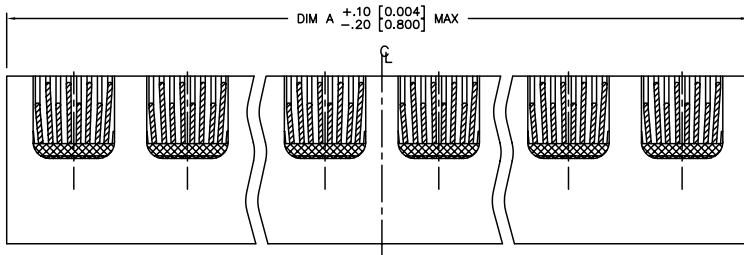


Tous droits strictement réservés. Reproduction ou communication à des tiers interdite sous quelque forme que ce soit sans autorisation écrite du propriétaire. Propriété de c FCI. Droits de reproduction FCI.

All rights strictly reserved. Reproduction or issue to third parties in any form whatever is not permitted without written authority from the proprietor. Property of FCI. Copyright FCI.



PRODUCT NO.
SEE TABLE



mat'l. code				tolerances unless otherwise specified			CUSTOMER COPY		 www.fciconnect.com	
ltr	ecn no	dr	date	linear	.xx ±.01/.X±.3	projection	title		R/A 8 POS GANG JACK ASSY	
C	V51452	LSS	12/4/95		.xxx ±.005/.xx±.13		product family		MOD JACK	
D	V60945	MDF	8/27/96		.xxx ±.0020/.xxx±.051		size		213	
E	V61463	GAH	1/10/97	angles	0° ±2°	MM/INCH	dwg no		94711	
F	T80171	CATHY	6/10/98	dr	KCHOU 3/18/93	scale	sheet		1 of 5	
G	V12594	LP	3/20/02	engr	TC 3/18/93	1:1	sheet		1 of 5	
H	V03-1103	PJ	10/21/03	chr	J.TSAO 3/18/93		sheet		1 of 5	
J	N04-0119	MHT	12/9/04	appd	J.TSAO 3/18/93		sheet		1 of 5	
sheet index	revision sheet	J	J	J	J	J	cage code		22526	

ACAD

PDM: Rev:J

STATUS: Released

Printed: Aug 01, 2010

1 | 2

3

4

1 | 2

3

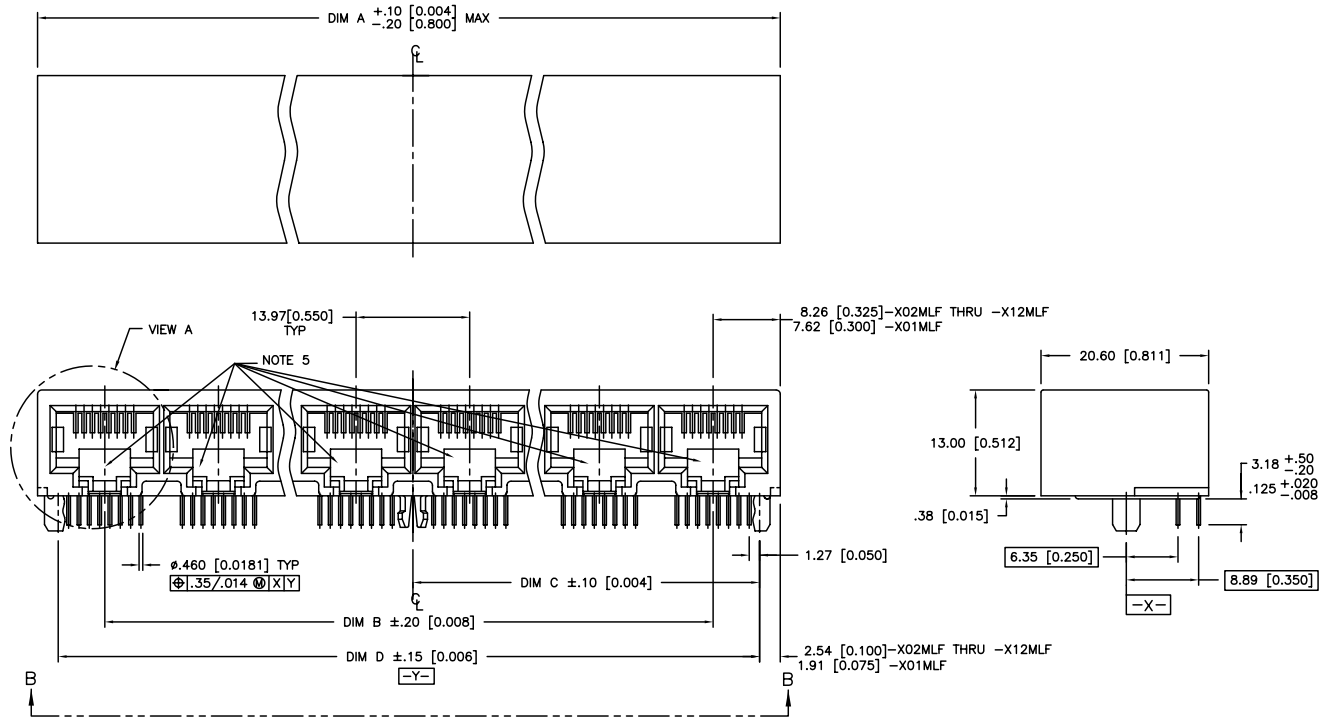
4

Tous droits strictement réservés. Reproduction ou communication à des tiers interdite sous quelque forme que ce soit sans autorisation écrite du propriétaire. Propriété de c FCI. Droits de reproduction FCI.

All rights strictly reserved. Reproduction or issue to third parties in any form whatever is not permitted without written authority from the proprietor. Property of FCI. Copyright FCI.



PRODUCT NO.
SEE TABLE



mat'l. code				tolerances unless otherwise specified				CUSTOMER COPY		 www.fciconnect.com	
ltr	ecn no	dr	date	linear	.xx ±.01/.X±.3	projection			title		
J					.xxx ±.005/.xx±.13		R/A 8 POS GANG JACK ASSY		UNSHIELDED DIAMOND PEG		
				angles	.xxx ±.0020/.xxx±.051	MM/INCH	product family		MOD JACK		code
				dr	0° ±2°	scale	A		94711		213
				enrg	KCHOU 3/18/93	1:1	size		dwg no		sheet
				chr	TC 3/18/93						2 of
				appd	J.TSAO 3/18/93						
sheet index	revision sheet										

ACAD

PDM: Rev:J

STATUS: Released

Printed: Aug 01, 2010

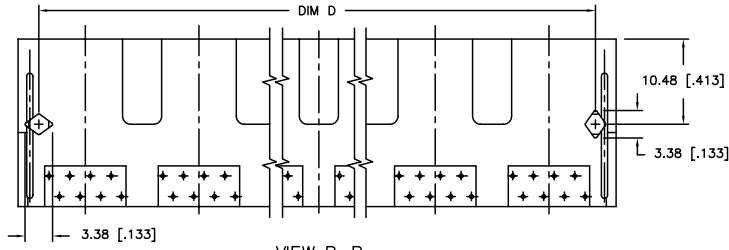
cage code
22526

Tous droits strictement réservés. Reproduction ou communication à des tiers interdite sous quelque forme que ce soit sans autorisation écrite du propriétaire. Propriété de © FCI. Droits de reproduction FCI.

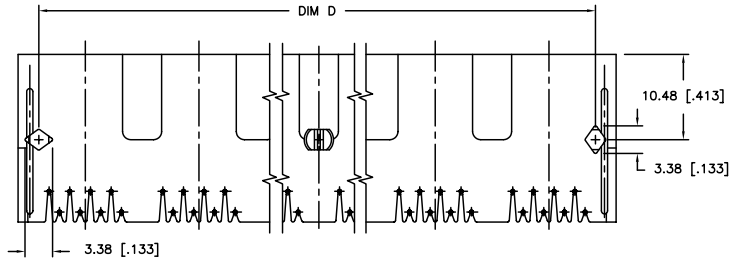
All rights strictly reserved. Reproduction or issue to third parties in any form whatever is not permitted without written authority from the proprietor. Property of FCI. Copyright FCI.



PRODUCT NO.
SEE TABLE



VIEW B-B
-XXXLF PRODUCT ONLY (WITHOUT CENTER PEG - SEE NOTE 4)



VIEW B-B
-XXXMLF PRODUCT ONLY (WITH CENTER PEG - SEE NOTE 3)

mat'l. code				tolerances unless otherwise specified			CUSTOMER COPY		www.fciconnect.com	
ltr	ecn no	dr	date	linear	.XX ±.01/.X±.3		projection	title		
J					.XXX ±.005/.XX±.13				R/A 8 POS GANG JACK ASSY	
				angles	.XXX ±.0020/.XXX±.051		MM/INCH		product family MOD JACK	
					0° ±2°			scale	size dwg no	
				dr	KCHOU	3/18/93	1:1		A	
				enrg	TC	3/18/93		94711		3 of
				chr	J.TSAO	3/18/93				
				appd	J.TSAO	3/18/93				
sheet index	revision sheet									

ACAD

PDM: Rev:J

STATUS: Released

Printed: Aug 01, 2010

cage code
22526

1 | 2

3

4

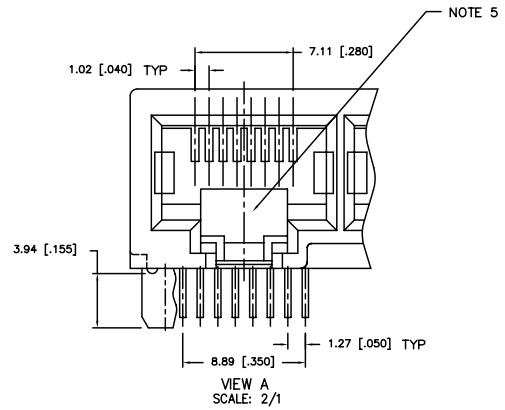
Tous droits strictement réservés. Reproduction ou communication à des tiers interdite sous quelque forme que ce soit sans autorisation écrite du propriétaire. Propriété de © FCI. Droits de reproduction FCI.

All rights strictly reserved. Reproduction or issue to third parties in any form whatever is not permitted without written authority from the proprietor. Property of FCI. Copyright FCI.

PRODUCT No.	NO OF PORTS	DIM A $\begin{smallmatrix} +.10 \\ -.20 \end{smallmatrix}$ $\begin{smallmatrix} [0.004] \\ [0.008] \end{smallmatrix}$	DIM B	DIM C \pm .10 [0.004]	DIM D \pm .15 [0.006]
94711-X01MLF	1	15.24 [0.600]	-----	5.72 [0.225]	11.43 [0.450]
94711-X02MLF	2	30.48 [1.200]	13.97 [0.550]	12.70 [0.500]	25.40 [1.000]
94711-X03MLF	3	44.45 [1.750]	27.94 [1.100]	19.69 [0.775]	39.37 [1.550]
94711-X04MLF	4	58.42 [2.300]	41.91 [1.650]	26.67 [1.050]	53.34 [2.100]
94711-X05MLF	5	72.39 [2.850]	55.88 [2.200]	33.66 [1.325]	67.31 [2.650]
94711-X06MLF	6	86.36 [3.400]	69.85 [2.750]	40.64 [1.600]	81.28 [3.200]
94711-X07MLF	7	100.33 [3.950]	83.82 [3.300]	47.63 [1.875]	95.25 [3.750]
94711-X08MLF	8	114.30 [4.500]	97.79 [3.850]	54.61 [2.150]	109.22 [4.300]
94711-X09MLF	9	128.27 [5.050]	111.76 [4.400]	61.60 [2.425]	123.19 [4.850]
94711-X10MLF	10	142.24 [5.600]	125.73 [4.950]	68.58 [2.700]	137.16 [5.400]
94711-X11MLF	11	156.21 [6.150]	139.70 [5.500]	75.57 [2.975]	151.13 [5.950]
94711-X12MLF	12	170.18 [6.700]	153.67 [6.050]	82.55 [3.250]	165.10 [6.500]

PRODUCT No.	NO OF PORTS	DIM A $\begin{smallmatrix} +.10 \\ -.20 \end{smallmatrix}$ $\begin{smallmatrix} [0.004] \\ [0.008] \end{smallmatrix}$	DIM B	DIM C \pm .10 [0.004]	DIM D \pm .15 [0.006]
94711-X01LF	1	15.24 [0.600]	-----	5.72 [0.225]	11.43 [0.450]
94711-X02LF	2	30.48 [1.200]	13.97 [0.550]	12.70 [0.500]	25.40 [1.000]
94711-X03LF	3	44.45 [1.750]	27.94 [1.100]	19.69 [0.775]	39.37 [1.550]
94711-X04LF	4	58.42 [2.300]	41.91 [1.650]	26.67 [1.050]	53.34 [2.100]
94711-X05LF	5	72.39 [2.850]	55.88 [2.200]	33.66 [1.325]	67.31 [2.650]
94711-X06LF	6	86.36 [3.400]	69.85 [2.750]	40.64 [1.600]	81.28 [3.200]
94711-X07LF	7	100.33 [3.950]	83.82 [3.300]	47.63 [1.875]	95.25 [3.750]
94711-X08LF	8	114.30 [4.500]	97.79 [3.850]	54.61 [2.150]	109.22 [4.300]
94711-X09LF	9	128.27 [5.050]	111.76 [4.400]	61.60 [2.425]	123.19 [4.850]
94711-X10LF	10	142.24 [5.600]	125.73 [4.950]	68.58 [2.700]	137.16 [5.400]
94711-X11LF	11	156.21 [6.150]	139.70 [5.500]	75.57 [2.975]	151.13 [5.950]
94711-X12LF	12	170.18 [6.700]	153.67 [6.050]	82.55 [3.250]	165.10 [6.500]

NOTE: PLEASE CHECK FOR AVAILABILITY, NOT ALL OPTIONS AVAILABLE.



PLATING CODE X	PLATING
0	.76uM/30u" G.X.T.
1	.38uM/15u" GOLD
3	.76uM/30u" GOLD
5	1.27uM/50u" GOLD

NOTES:

1. APPLICABLE PC BOARD THICKNESS: 1.60 [0.062].
2. CONTACTS: PHOSPHOR BRONZE ALLOY UNS-C51000, ϕ .460 [0.0181] ROUND WIRE, SEE TABLE FOR PLATING.
- ③ CENTER PEG FOR 8 PORTS AND ABOVE, (-XXXMLF PRODUCT ONLY).
- ④ NO CENTER PEG FOR -XXXLF PRODUCT.
5. COMPANY LOGO LOCATED IN THIS AREA.
6. PART NUMBERS WITH LF IN THE END ARE LEAD FREE
7. THIS PRODUCT MEETS EUROPEAN UNION DIRECTIVES AND OTHER COUNTRY REGULATION AS DESCRIBED IN GS-22-008.
8. THE HOUSING WITHSTAND EXPOSURE TO 260° PEAK TEMPERATURE FOR 15 SECONDS IN CONVENTION INFRA-RED OR VAPOR PHASE REFLOW OVEN.

mat'l. code				tolerances unless otherwise specified				CUSTOMER COPY		FCI www.fciconnect.com	
ltr	ecn	no	dr	date	linear	.xx \pm .01/.x \pm .3	projection	title		R/A 8 POS GANG JACK ASSY UNSHIELDED DIAMOND PEG	
J						.xxx \pm .005/.xxx \pm .13	ϕ \rightarrow	product family		MOD JACK	
					angles	.xxx \pm .0020/.xxx \pm .051	MM/INCH	size		213	
					dr	0° \pm 2°	scale	dwg no		4 of	
					engr		1:1	A		94711	
					chr	KCHOU 3/18/93					
					appd	J.TSAO 3/18/93					
sheet index	revision sheet							cage code		22526	

1 | 2

ACAD

PDM: Rev:J

STATUS: Released

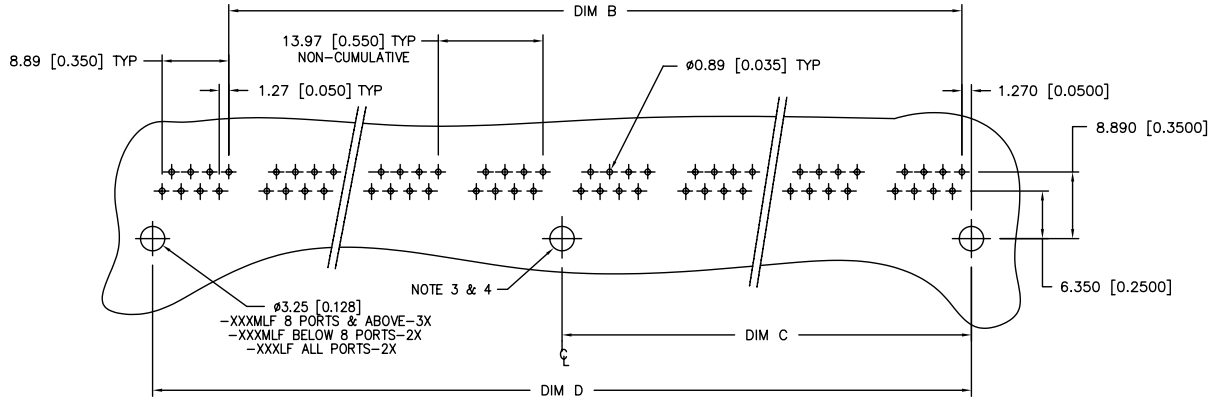
Printed: Aug 01, 2010

Tous droits strictement réservés. Reproduction ou communication à des tiers interdite sous quelque forme que ce soit sans autorisation écrite du propriétaire. Propriété de c FCI. Droits de reproduction FCI.

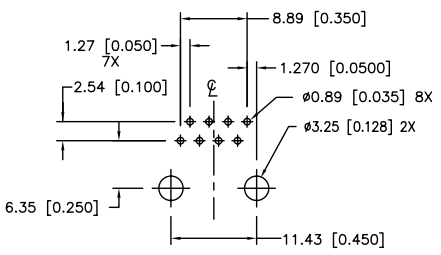


All rights strictly reserved. Reproduction or issue to third parties in any form whatever is not permitted without written authority from the proprietor. Property of FCI. Copyright FCI.

PRODUCT NO.
SEE TABLE



RECOMMENDED PC BOARD LAYOUT
(2 THRU 12 PORTS)



RECOMMENDED PC BOARD LAYOUT
(1 PORT)

mat'l. code		tolerances unless otherwise specified		CUSTOMER COPY		www.fciconnect.com	
ltr	ecn no	dr	date	linear	projection	title	
J				.XX ±.01/.X±.3		R/A 8 POS GANG JACK ASSY	
				.XXX ±.005/.XX±.13		UNSHIELDED DIAMOND PEG	
				.XXX ±.0020/.XXX±.051	MM/INCH	product family	MOD JACK
				angles	scale	size	code
				0° ±2°	1:1	dwg no	213
				dr			sheet
				enrg			5 of
				chr			
				appd			
sheet index	revision sheet					cage code	
						22526	

ACAT

PDM: Rev:J

STATUS: Released

Printed: Aug 04, 2010