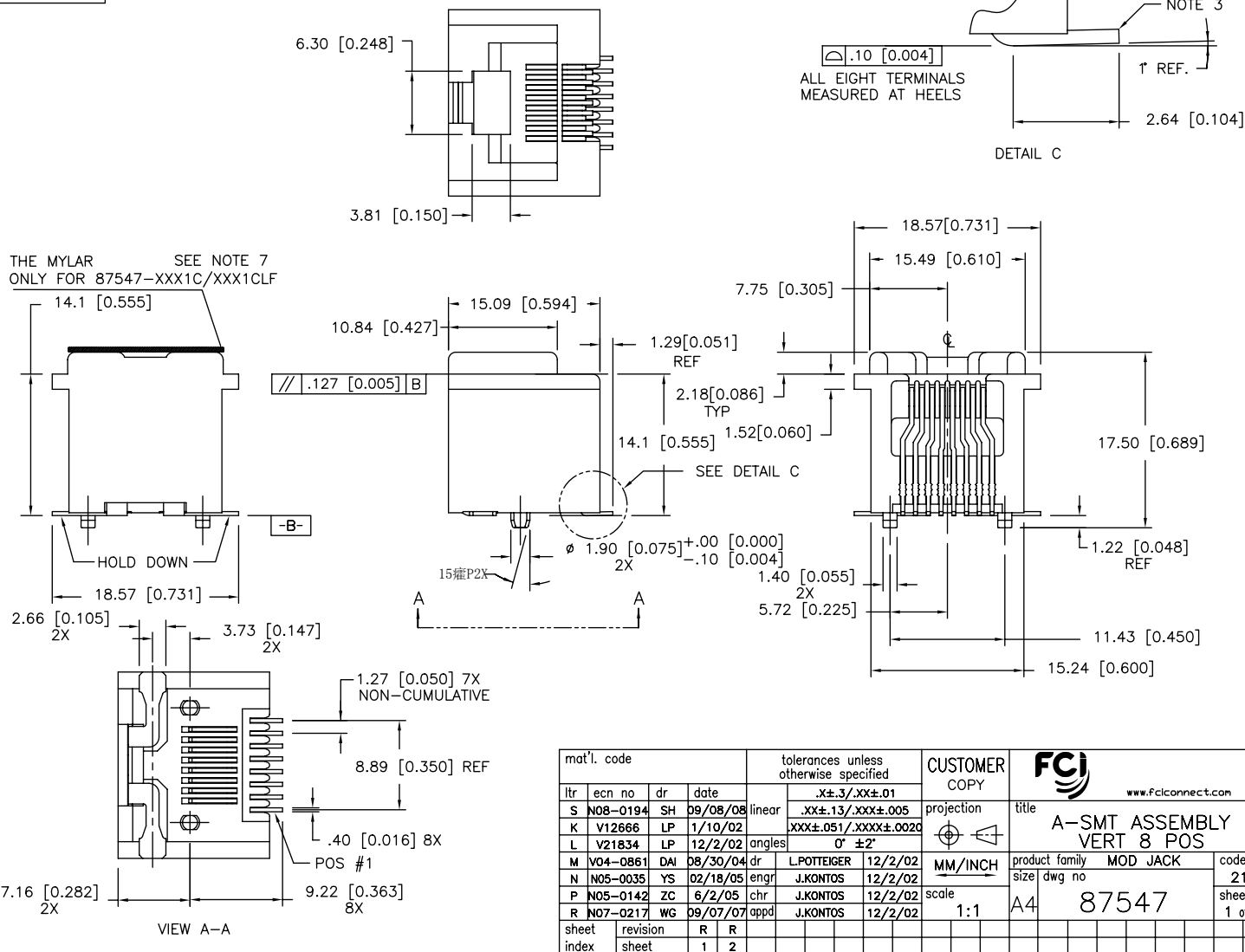


All rights strictly reserved. Reproduction or issue to third parties in any form whatever is not permitted without written authority from the proprietor. Property of FCI. Copyright FCI.  
 Tous droits strictement réservés. Reproduction ou communication à des tiers interdite sous quelque forme que ce soit sans autorisation écrite du propriétaire. Propriété de c FCI. Droits de reproduction FCI.

PRODUCT NO.  
SEE TABLE

1 | 2 | 3 | 4



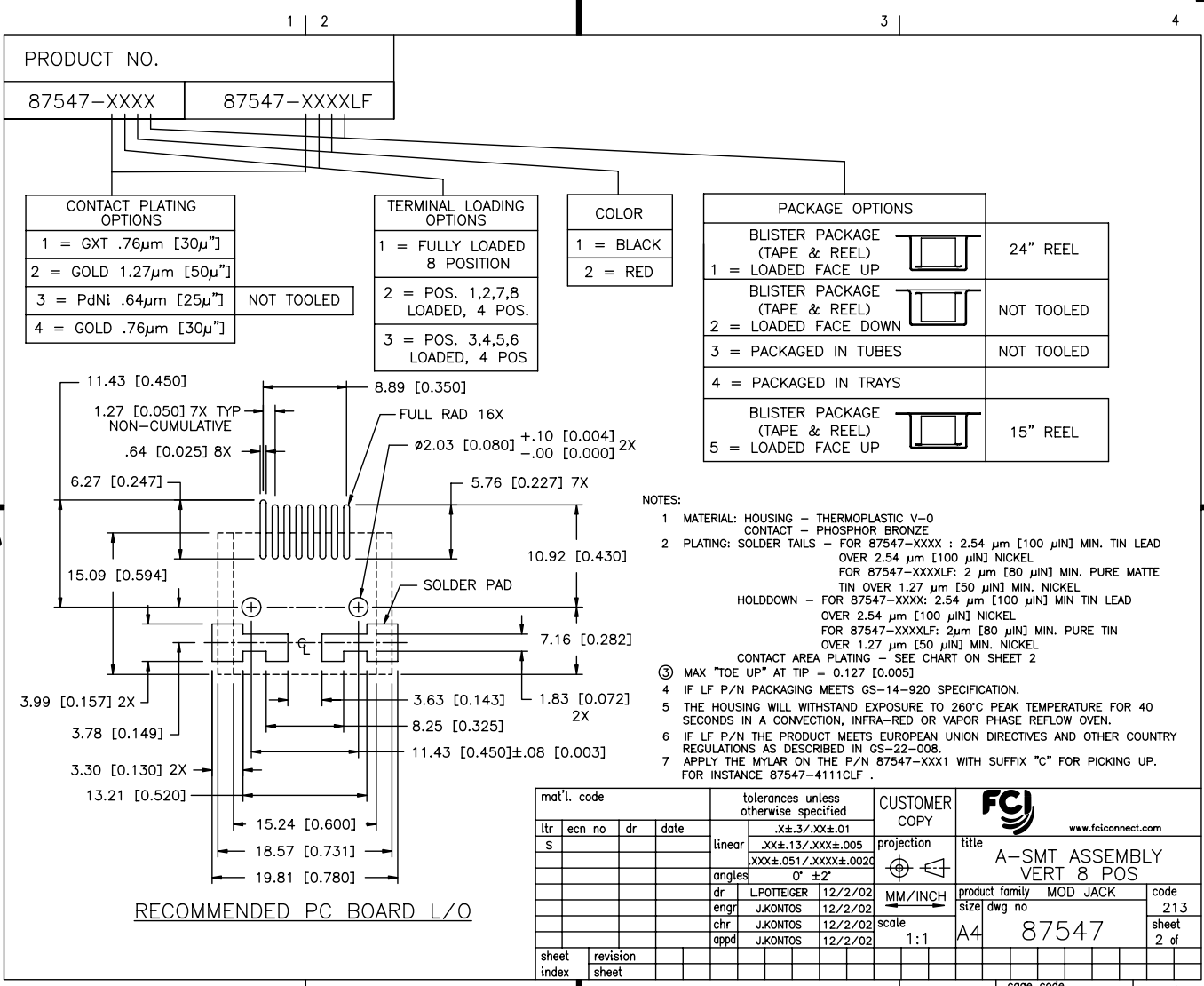
1 | 2 | 3 | 4

ACAD | PDM: Rev:S | STATUS: Released | cage code 22506 | Aug 01, 2010

Tous droits strictement réservés. Reproduction ou communication à des tiers interdite sous quelque forme que ce soit sans autorisation écrite du propriétaire. Property of FCI. Droits de reproduction FCI.



All rights strictly reserved. Reproduction or issue to third parties in any form whatever is not permitted without written authority from the proprietor. Property of FCI. Copyright FCI.



- NOTES:
- MATERIAL: HOUSING - THERMOPLASTIC V-0 CONTACT - PHOSPHOR BRONZE
  - PLATING: SOLDER TAILS - FOR 87547-XXXX : 2.54 µm [100 µIN] MIN. TIN LEAD OVER 2.54 µm [100 µIN] NICKEL FOR 87547-XXXXLF: 2 µm [80 µIN] MIN. PURE MATTE TIN OVER 1.27 µm [50 µIN] MIN. NICKEL HOLDDOWN - FOR 87547-XXXX: 2.54 µm [100 µIN] MIN TIN LEAD OVER 2.54 µm [100 µIN] NICKEL FOR 87547-XXXXLF: 2µm [80 µIN] MIN. PURE TIN OVER 1.27 µm [50 µIN] MIN. NICKEL CONTACT AREA PLATING - SEE CHART ON SHEET 2
  - MAX "TOE UP" AT TIP = 0.127 [0.005]
  - IF LF P/N PACKAGING MEETS GS-14-920 SPECIFICATION.
  - THE HOUSING WILL WITHSTAND EXPOSURE TO 260°C PEAK TEMPERATURE FOR 40 SECONDS IN A CONVECTION, INFRA-RED OR VAPOR PHASE REFLOW OVEN.
  - IF LF P/N THE PRODUCT MEETS EUROPEAN UNION DIRECTIVES AND OTHER COUNTRY REGULATIONS AS DESCRIBED IN GS-22-00B.
  - APPLY THE MYLAR ON THE P/N 87547-XXX1 WITH SUFFIX "C" FOR PICKING UP. FOR INSTANCE 87547-4111CLF .

|             |          |                                       |      |                    |            |                           |          |
|-------------|----------|---------------------------------------|------|--------------------|------------|---------------------------|----------|
| mat'l. code |          | tolerances unless otherwise specified |      | CUSTOMER COPY      |            | FCI<br>www.fciconnect.com |          |
| ltr         | ecn no   | dr                                    | date | linear             | projection | title                     |          |
| S           |          |                                       |      | .XX±.13/.XXX±.005  |            | A-SMT ASSEMBLY VERT 8 POS |          |
|             |          |                                       |      | XXX±.051/.XXX±.002 |            | product family            | MOD JACK |
|             |          |                                       |      | angles             | MM/INCH    | size                      | dwg no   |
|             |          |                                       |      | dr                 | scale      | A4                        | 87547    |
|             |          |                                       |      | engr               | 1:1        |                           |          |
|             |          |                                       |      | chr                |            |                           |          |
|             |          |                                       |      | appd               |            |                           |          |
| sheet       | revision |                                       |      |                    |            |                           |          |
| index       | sheet    |                                       |      |                    |            |                           |          |