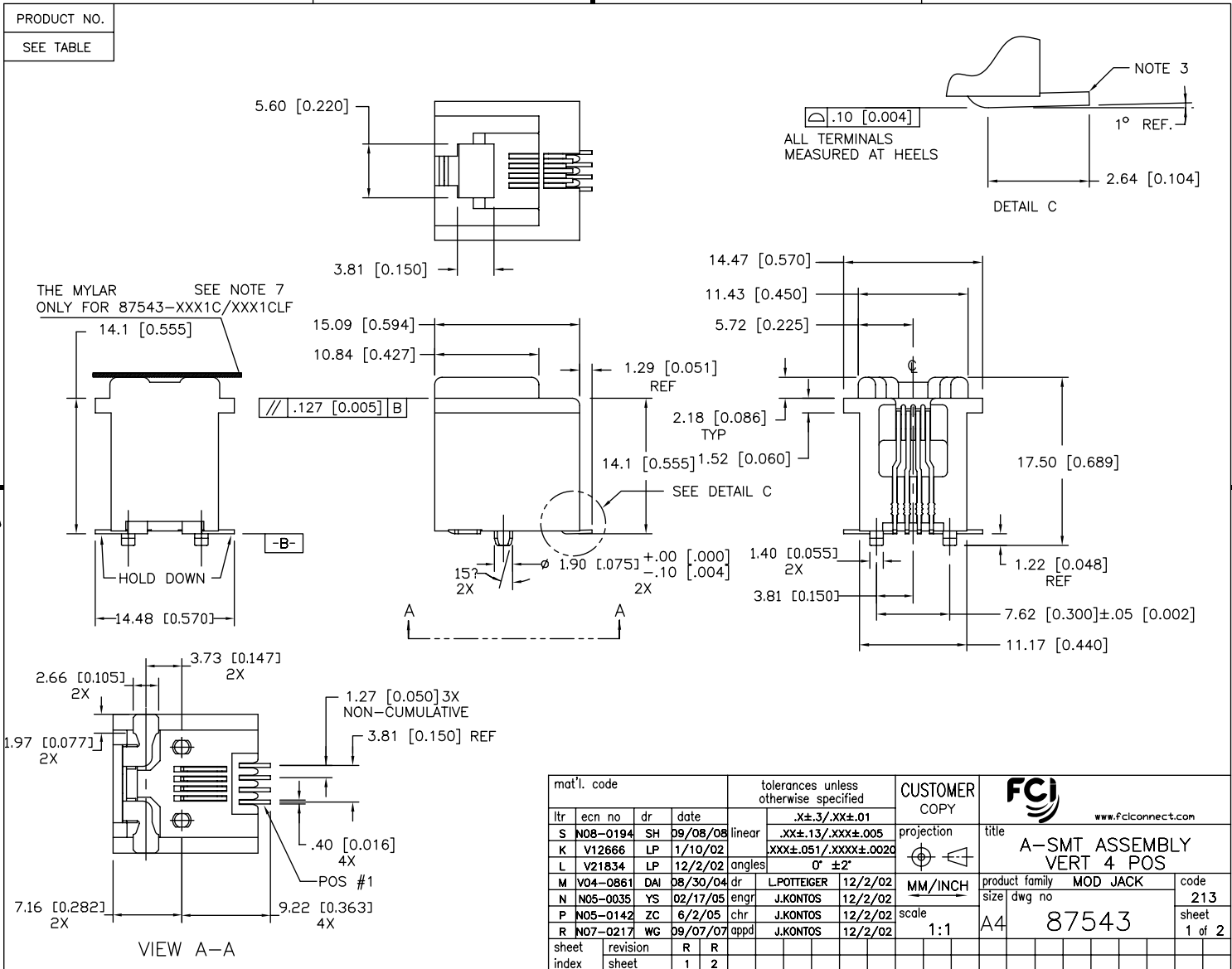


Tous droits strictement réservés. Reproduction ou communication à des tiers interdite sous quelque forme que ce soit sans autorisation écrite du propriétaire. Propriété de c FCI. Droits de reproduction FCI.

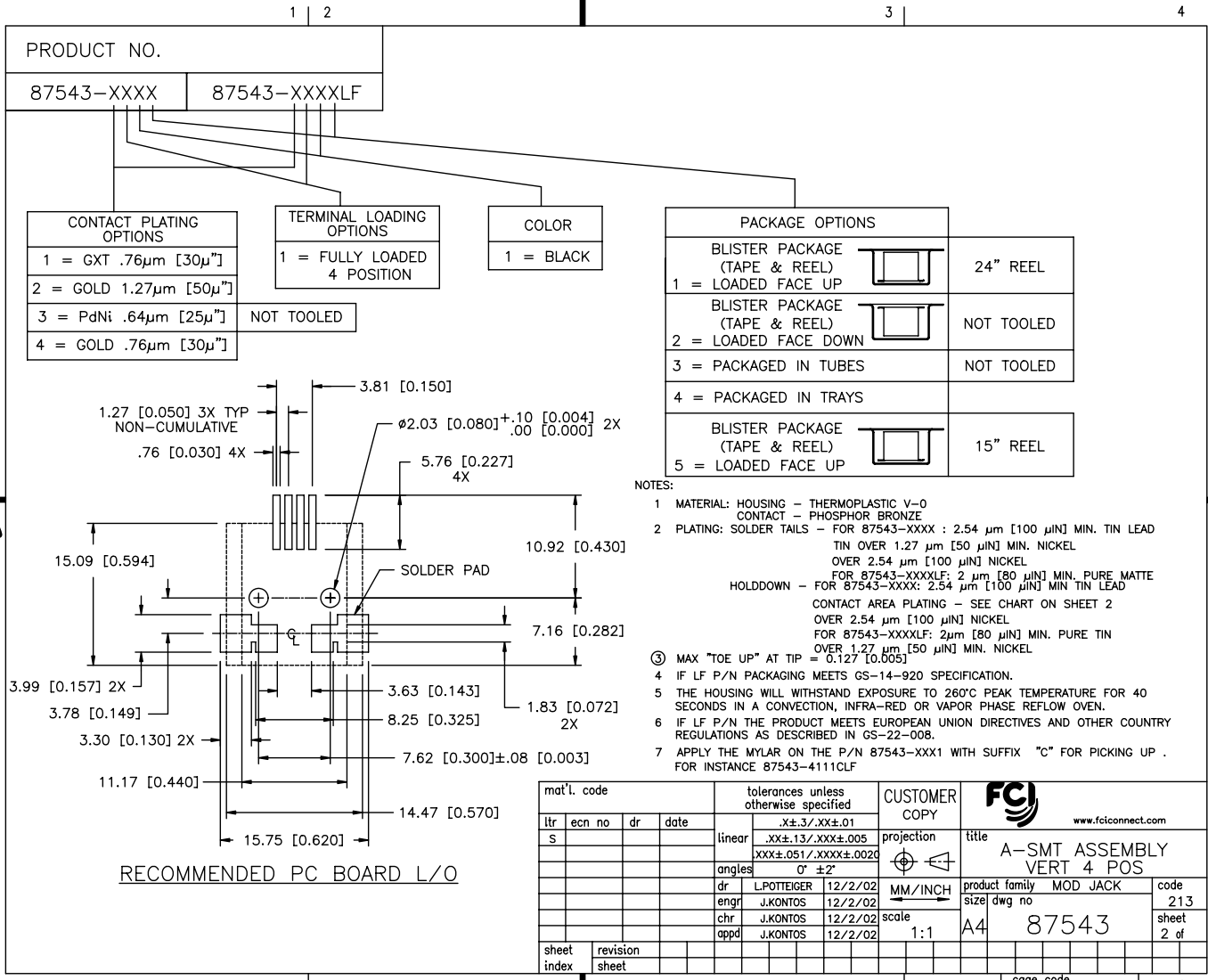
All rights strictly reserved. Reproduction or issue to third parties in any form whatever is not permitted without written authority from the proprietor. Property of FCI. Copyright FCI.



ACAD PDM: Rev:S STATUS: Released cage code 22506 Aug 01, 2010

Tous droits strictement réservés. Reproduction ou communication à des tiers interdite sous quelque forme que ce soit sans autorisation écrite du propriétaire. Propriété de c FCI. Droits de reproduction FCI.

All rights strictly reserved. Reproduction or issue to third parties in any form whatever is not permitted without written authority from the proprietor. Property of FCI. Copyright FCI.



| | |
|-------------|--------------|
| PRODUCT NO. | |
| 87543-XXXX | 87543-XXXXLF |

| CONTACT PLATING OPTIONS | |
|-------------------------|--|
| 1 = GXT .76µm [30µ"] | |
| 2 = GOLD 1.27µm [50µ"] | |
| 3 = PdNi .64µm [25µ"] | |
| 4 = GOLD .76µm [30µ"] | |

| TERMINAL LOADING OPTIONS | |
|--------------------------|--|
| 1 = FULLY LOADED | |
| 4 POSITION | |
| NOT TOOLED | |

| COLOR | |
|-----------|--|
| 1 = BLACK | |

| PACKAGE OPTIONS | | |
|-------------------------------|--|------------|
| BLISTER PACKAGE (TAPE & REEL) | | 24" REEL |
| 1 = LOADED FACE UP | | |
| BLISTER PACKAGE (TAPE & REEL) | | NOT TOOLED |
| 2 = LOADED FACE DOWN | | |
| 3 = PACKAGED IN TUBES | | NOT TOOLED |
| 4 = PACKAGED IN TRAYS | | |
| BLISTER PACKAGE (TAPE & REEL) | | 15" REEL |
| 5 = LOADED FACE UP | | |

- NOTES:
- MATERIAL: HOUSING - THERMOPLASTIC V-0
CONTACT - PHOSPHOR BRONZE
 - PLATING: SOLDER TAILS - FOR 87543-XXXX : 2.54 µm [100 µIN] MIN. TIN LEAD
TIN OVER 1.27 µm [50 µIN] MIN. NICKEL
OVER 2.54 µm [100 µIN] NICKEL
FOR 87543-XXXXLF: 2 µm [80 µIN] MIN. PURE MATTE
HOLDDOWN - FOR 87543-XXXX: 2.54 µm [100 µIN] MIN TIN LEAD
CONTACT AREA PLATING - SEE CHART ON SHEET 2
OVER 2.54 µm [100 µIN] NICKEL
FOR 87543-XXXXLF: 2µm [80 µIN] MIN. PURE TIN
OVER 1.27 µm [50 µIN] MIN. NICKEL
 - MAX "TOE UP" AT TIP = 0.127 [0.005]
 - IF LF P/N PACKAGING MEETS GS-14-920 SPECIFICATION.
 - THE HOUSING WILL WITHSTAND EXPOSURE TO 260°C PEAK TEMPERATURE FOR 40 SECONDS IN A CONVECTION, INFRA-RED OR VAPOR PHASE REFLOW OVEN.
 - IF LF P/N THE PRODUCT MEETS EUROPEAN UNION DIRECTIVES AND OTHER COUNTRY REGULATIONS AS DESCRIBED IN GS-22-008.
 - APPLY THE MYLAR ON THE P/N 87543-XXX1 WITH SUFFIX "C" FOR PICKING UP .
FOR INSTANCE 87543-4111CLF

| | | | | | | | |
|-------------|----------|---------------------------------------|------|----------------------|---------------------|--------------------|----------|
| mat'l. code | | tolerances unless otherwise specified | | CUSTOMER COPY | | FCI | |
| ltr | ecn no | dr | date | linear | projection | www.fciconnect.com | |
| S | | | | .X±.3/.XX±.01 | | title | |
| | | | | .XX±.13/.XXX±.005 | | A-SMT ASSEMBLY | |
| | | | | XXX±.051/.XXXX±.0020 | | VERT 4 POS | |
| | | | | angles | 0° ±2° | product family | MOD JACK |
| | | | | dr | L.POTTEIGER 12/2/02 | size | dwg no |
| | | | | engr | J.KONTOS 12/2/02 | 87543 | |
| | | | | chr | J.KONTOS 12/2/02 | code | 213 |
| | | | | appd | J.KONTOS 12/2/02 | sheet | 2 of |
| sheet | revision | | | scale | 1:1 | | |
| index | sheet | | | | | | |

RECOMMENDED PC BOARD L/O

ACAD

PDM: Rev: S

STATUS: Released 2006 Printed: Aug 03, 2006