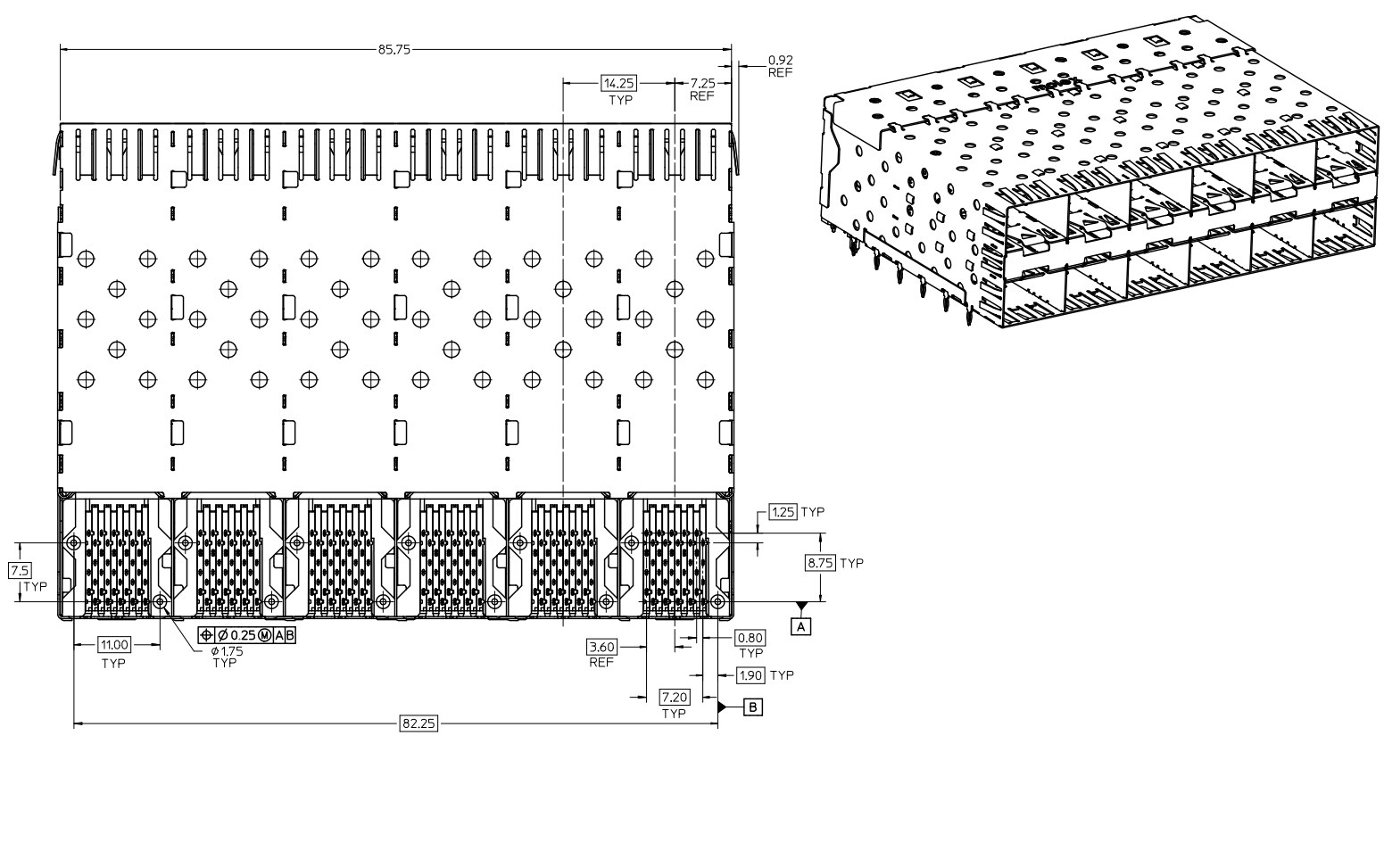


- NOTES:
- MATERIAL:
 - CAGE: NICKEL SILVER, THICKNESS: 0.25mm
 - CONNECTOR HOUSING: GLASS FILLED THERMOPLASTIC, UL: 94 V-0, COLOR: BLACK
 - OVERMOLD TERMINAL HOUSING: GLASS FILLED THERMOPLASTIC, UL: 94 V-0, COLOR: BLACK
 - TERMINALS: BRASS
 - FINISH
 - TERMINALS: CONTACT AREA: 0.76 MICROMETERS MINIMUM HARD GOLD OVER 1.27 MICROMETERS MINIMUM NICKEL.
 - COMPLIANT TAIL - TIN/LEAD OPTION: 0.76 - 1.52 MICROMETERS 90/10 TIN/LEAD OVER 0.76 - 1.52 MICROMETERS NICKEL
 - COMPLIANT TAIL - TIN OPTION: 0.76 - 1.52 MICROMETERS TIN OVER 0.76 - 1.52 MICROMETERS NICKEL
 - REFER TO PS-75310-001 PRODUCT SPEC FOR ALL ELECTRICAL, MECHANICAL AND ENVIRONMENTAL SPECIFICATIONS.
 - REFER TO PK-75451-001 FOR ALL PACKAGING SPECIFICATIONS.
 - THE CURVED TAILS THAT GO INTO THE HOLES LOCATED BY THESE DIMENSIONS ARE BEING ELIMINATED. TO ACCOMMODATE THIS CONVERSION, IT IS RECOMMENDED THAT BOARDS DESIGNED TO THIS PRINT REVISION INCLUDE THESE HOLES.
 - PART COMPLIES WITH COSMETIC SPECIFICATION PS-45499-002. SEE SHEET 4 SECTION Z-Z FOR SURFACE CLASSIFICATIONS. UNDERSIDE OF CAGE COMPLIES WITH CLASS 'C'.

ADD KEEP OUT ZONES EC NO: UCP200-0369 2009/07/09 DRW:MSBARRA 2009/08/26 CHK:K APPR:SHILLER 2009/08/27	QUALITY SYMBOLS ▽=0 ▽=0	GENERAL TOLERANCES (UNLESS SPECIFIED)		DIMENSION STYLE MM ONLY		SCALE 3:1	DESIGN UNITS METRIC	MATERIAL NO. 754770001	TERMINAL TAIL PLATING TIN / LEAD
		4 PLACES ±--- ±--- 3 PLACES ±--- ±--- 2 PLACES ±0.13 ±--- 1 PLACE ±0.25 ±--- ANGULAR ± 5°	mm INCH ±--- ±--- ±--- ±--- ±0.13 ±--- ±0.25 ±--- ± 5°	DRAWN BY JLONG DATE 02-04-2004	CHECKED BY KREGNIER DATE 02-27-2004	APPROVED BY KREGNIER DATE 04-28-2004	TITLE STACKED SFP 2X6 MEDIUM HEIGHT ASS'Y, PRESS-FIT TAIL WITHOUT LIGHT PIPES	MOLEX INCORPORATED	DOCUMENT NO. SD-75477-001

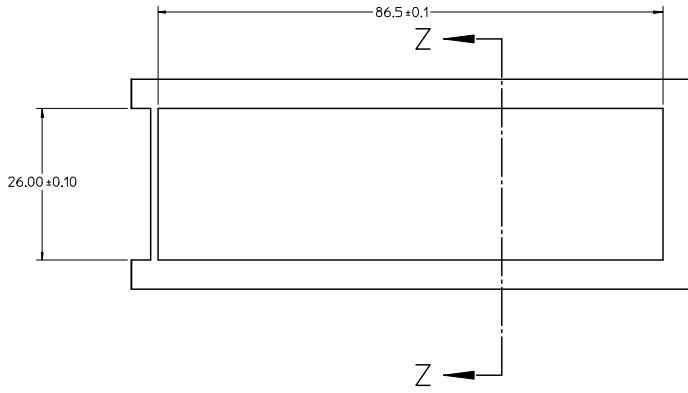
13 12 11 10 9 8 7 6 5 4 3 2 1



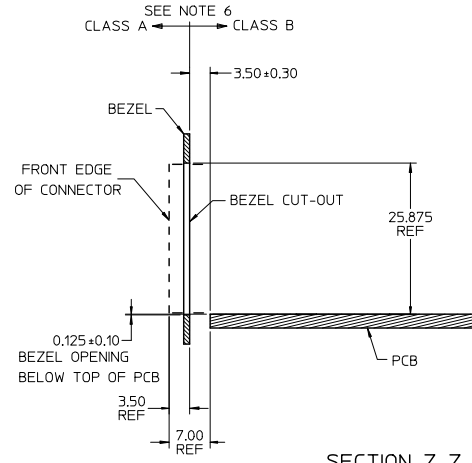
SEE SHEET 1 EC NO. UCP2010-0369 DRAWN BY: BARRA CHKD: MILLER APPR: MILLER 2009/07/09 2009/08/26 2009/08/27	QUALITY SYMBOLS ▽=0 ▽=0 DESCRIPTION	GENERAL TOLERANCES (UNLESS SPECIFIED)		DIMENSION STYLE MM ONLY		SCALE 3:1	DESIGN UNITS METRIC	THIRD ANGLE PROJECTION	
		4 PLACES ±--- ±---	mm	INCH	DRAWN BY	DATE	TITLE		
		3 PLACES ±--- ±---			JLONG	02-04-2004	STACKED SFP 2X6 MEDIUM HEIGHT ASS'Y, PRESS-FIT TAIL WITHOUT LIGHT PIPES		
		2 PLACES ±0.13 ±---			CHECKED BY	DATE			
1 PLACE ±0.25 ±---			KREGNIER	02-27-2004					
ANGULAR ± 5 °				APPROVED BY	DATE				
				KREGNIER	04-28-2004				
DRAFT WHERE APPLICABLE MUST REMAIN WITHIN DIMENSIONS				MATERIAL NO.	DOCUMENT NO.	SHEET NO.			
				SEE TABLE	SD-75477-001	2 OF 4			
				THIS DRAWING CONTAINS INFORMATION THAT IS PROPRIETARY TO MOLEX INCORPORATED AND SHOULD NOT BE USED WITHOUT WRITTEN PERMISSION					

Id_frame_C_P_AM_T
Rev. E 2006/04/15

12 11 10 9 8 7 6 5 4 3 2 1

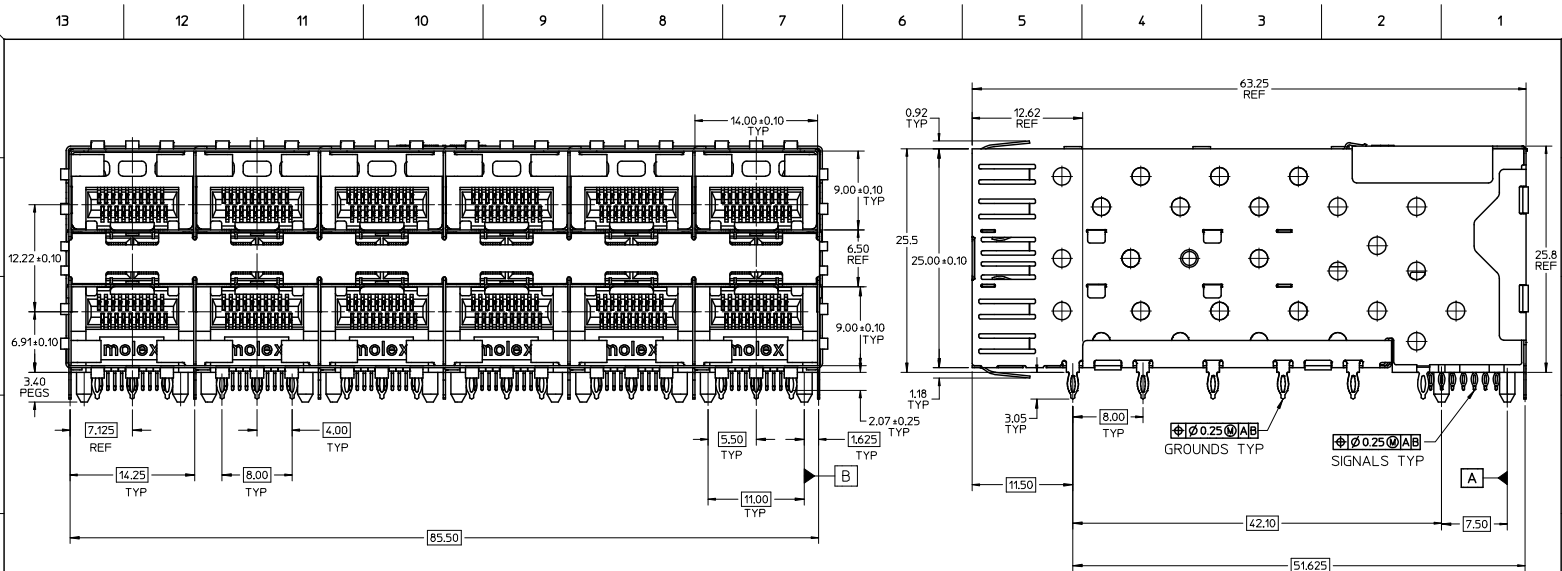


BEZEL CUT-OUT OPENING DETAIL
BEZEL THICKNESS 0.8 - 2.6



SECTION Z-Z

SEE SHEET 1 EC NO: UCP2010-0369 DRAWN BY: IBARRA 2009/07/09 CHKD: MILLER 2009/08/26 APPR: MILLER 2009/08/27	QUALITY SYMBOLS ▽=0 ▽=0	GENERAL TOLERANCES (UNLESS SPECIFIED)		DIMENSION STYLE		SCALE	DESIGN UNITS	THIRD ANGLE PROJECTION		
		mm	INCH	MM ONLY		2:1	METRIC			
		4 PLACES ± 0.10	± 0.004	DRAWN BY	DATE	TITLE				
		3 PLACES ± 0.13	± 0.005	JLONG	02-04-2004	STACKED SFP 2X6 MEDIUM HEIGHT ASS'Y, PRESS-FIT TAIL WITHOUT LIGHT PIPES				
2 PLACES ± 0.25	± 0.008	1 PLACE ± 0.25	± 0.010	CHECKED BY	DATE	MOLEX INCORPORATED				
ANGULAR ± 5°		ANGULAR ± 5°		KREGNIER	02-27-2004	MATERIAL NO. DOCUMENT NO. SHEET NO.				
				KREGNIER	04-28-2004	SEE TABLE	SD-75477-001	4 OF 4		
DRAFT WHERE APPLICABLE MUST REMAIN WITHIN DIMENSIONS		SIZE		THIS DRAWING CONTAINS INFORMATION THAT IS PROPRIETARY TO MOLEX INCORPORATED AND SHOULD NOT BE USED WITHOUT WRITTEN PERMISSION						

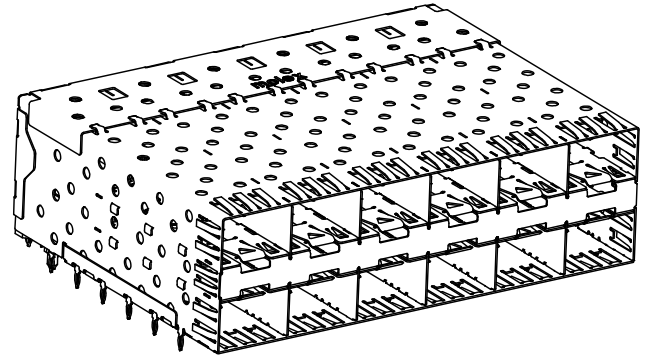
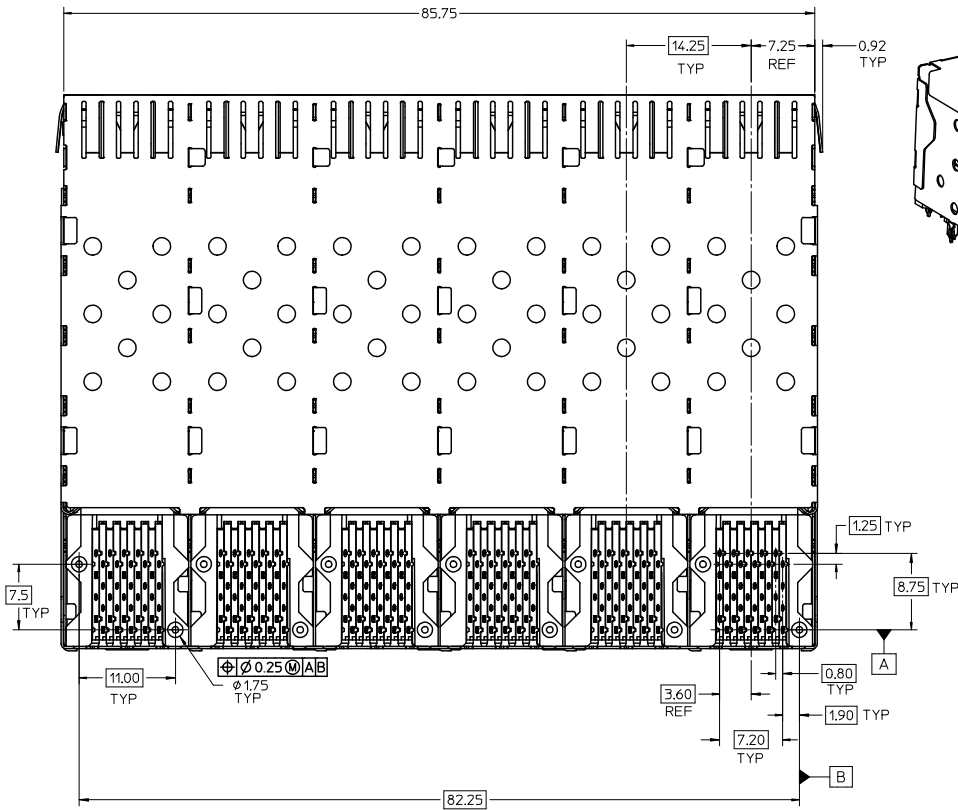


NOTES:

- MATERIAL:
 - CAGE: NICKEL SILVER, THICKNESS: 0.25mm
 - CONNECTOR HOUSING: GLASS FILLED THERMOPLASTIC, UL: 94 V-0, COLOR: BLACK
 - OVERMOLD TERMINAL HOUSING: GLASS FILLED THERMOPLASTIC, UL: 94 V-0, COLOR: BLACK
 - TERMINALS: BRASS
- FINISH
 - TERMINALS: CONTACT AREA: 0.76 MICROMETERS MINIMUM HARD GOLD OVER 1.27 MICROMETERS MINIMUM NICKEL.
 - COMPLIANT AREA: 0.76 - 1.52 MICROMETERS 90/10 TIN/LEAD OVER 0.76 - 1.52 MICROMETERS NICKEL.
- REFER TO PS-75310-001 PRODUCT SPEC FOR ALL ELECTRICAL, MECHANICAL AND ENVIRONMENTAL SPECIFICATIONS.
- REFER TO PK-75451-001 FOR ALL PACKAGING SPECIFICATIONS.
- THE CURVED TAILS THAT GO INTO THE HOLES LOCATED BY THESE DIMENSIONS ARE BEING ELIMINATED. TO ACCOMMODATE THIS CONVERSION, IT IS RECOMMENDED THAT BOARDS DESIGNED TO THIS PRINT REVISION INCLUDE THESE HOLES.
- PART COMPLIES WITH COSMETIC SPECIFICATION PS-45499-002. SEE SHEET 4 SECTION Z-Z FOR SURFACE CLASSIFICATIONS. UNDERSIDE OF CAGE COMPLIES WITH CLASS 'C'.

ADD KEEP OUT ZONES EC NO.: LCEP2010-0369 DRAWN BY: DRWMSH/BARRA CHKD: CHACD/08/28 APPR: SHILLER 2009/08/28 2009/08/27	QUALITY SYMBOLS ▽=0 ▽=0	GENERAL TOLERANCES (UNLESS SPECIFIED)		DIMENSION STYLE		SCALE	DESIGN UNITS	THIRD ANGLE PROJECTION		
		mm	INCH	MM ONLY		3:1	METRIC			
		4 PLACES ±---	±---	DRAWN BY	DATE	TITLE				
		3 PLACES ±---	±---	DROSCA	01-06-2005	STACKED SFP 2X6 MEDIUM HEIGHT ASS'Y, PRESS-FIT FOUNDRY SALES DRAWING				
2 PLACES ±0.13	±---	CHECKED BY	DATE	MOLEX INCORPORATED						
1 PLACE ±0.25	±---	JLONG	01-06-2005							
ANGULAR ± 5°		APPROVED BY	DATE							
		RNELSON	02-15-2005							
DRAFT WHERE APPLICABLE MUST REMAIN WITHIN DIMENSIONS		MATERIAL NO.	754771001	DOCUMENT NO.	SD-75477-101	SHEET NO. 1 OF 4				
THIS DRAWING CONTAINS INFORMATION THAT IS PROPRIETARY TO MOLEX INCORPORATED AND SHOULD NOT BE USED WITHOUT WRITTEN PERMISSION										

13 12 11 10 9 8 7 6 5 4 3 2 1

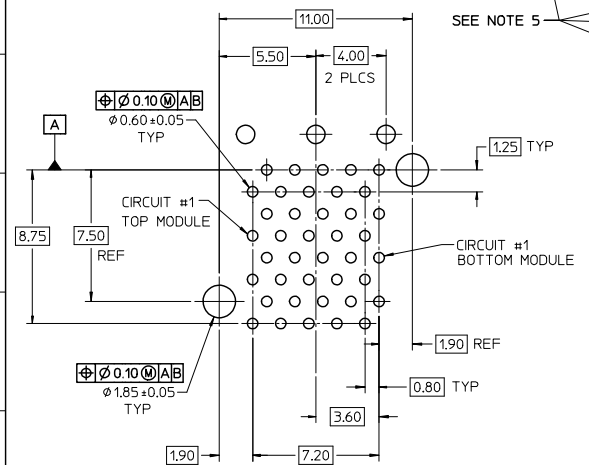
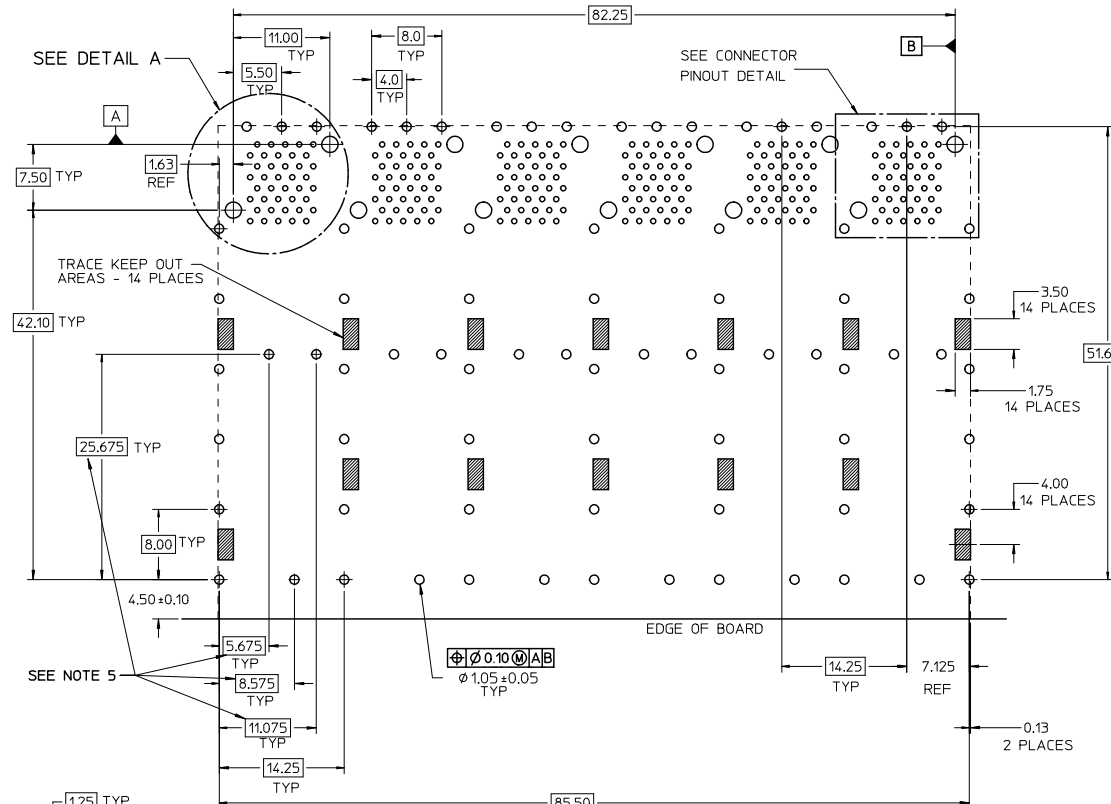
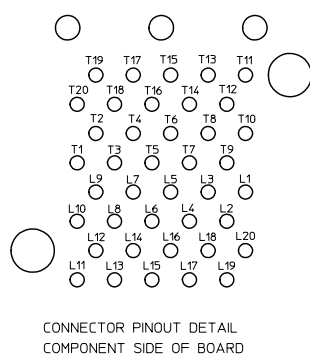


SEE SHEET 1 EC. NO. UCP2010-0369 DRWNS:IBARRA 2009/07/09 CHKD: 2009/08/26 APPR: SHILLER 2009/08/27	QUALITY SYMBOLS ▽=0 ▽=0	GENERAL TOLERANCES (UNLESS SPECIFIED):		DIMENSION STYLE MM ONLY		SCALE 3:1	DESIGN UNITS METRIC	THIRD ANGLE PROJECTION	
		4 PLACES ±--- ±---	mm	INCH	DRAWN BY DROSCA	DATE 01-06-2005	TITLE STACKED SFP 2X6 MEDIUM HEIGHT ASS'Y, PRESS-FIT FOUNDRY SALES DRAWING		
		3 PLACES ±--- ±---			CHECKED BY JLONG	DATE 01-06-2005			
		2 PLACES ±0.13 ±--- 1 PLACE ±0.25 ±--- ANGULAR ± 5 °			APPROVED BY RNELSON	DATE 02-15-2005	MOLEX INCORPORATED		
DRAFT WHERE APPLICABLE MUST REMAIN WITHIN DIMENSIONS		MATERIAL NO. 754771001		DOCUMENT NO. SD-75477-101		SHEET NO. 2 OF 4			

Id_frame_C.P.A.M.T
Rev. E 2006/04/15

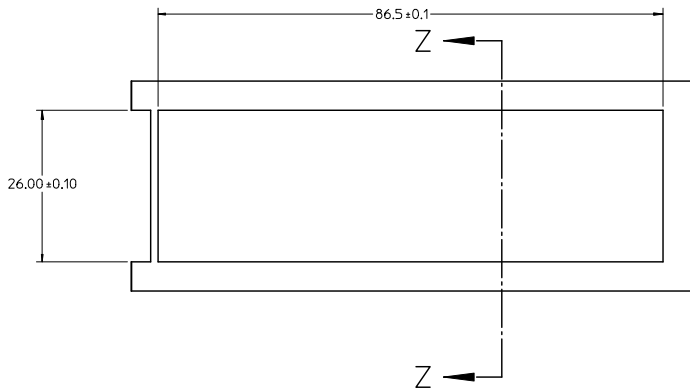
12 11 10 9 8 7 6 5 4 3 2 1

13 12 11 10 9 8 7 6 5 4 3 2 1

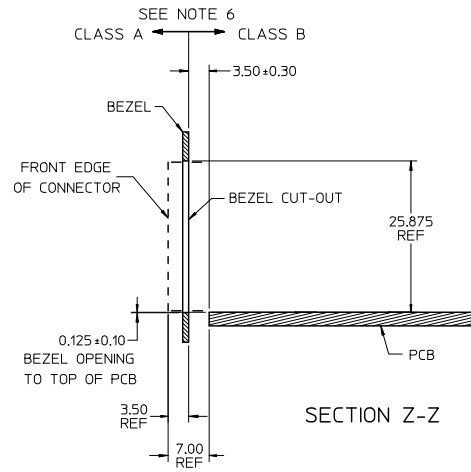


RECOMMENDED PCB LAYOUT - COMPONENT SIDE
 RECOMMENDED PCB THICKNESS - 2.36 MM (0.093 INCH)
 THE ENTIRE AREA OF THE CONNECTOR FOOTPRINT
 TO BE CONSIDERED THE KEEP OUT AREA FOR COMPONENTS
 THIS AREA IS INDICATED BY THE DASHED LINE

ADD KEEP OUT ZONES EC NO. IUCP2010-0369 DRAWN BY: DRWINHIBARRA 2009/07/09 CHKD: CHKCO 2009/08/26 APPR: SHILLER 2009/08/27	QUALITY SYMBOLS ▽=0 ▽=0	GENERAL TOLERANCES (UNLESS SPECIFIED)		DIMENSION STYLE		SCALE	DESIGN UNITS	THIRD ANGLE PROJECTION	
		mm	INCH	MM ONLY		3:1	METRIC		
		4 PLACES ±---	±---	DRAWN BY	DATE	TITLE			
		3 PLACES ±---	±---	DROSCA	01-06-2005	STACKED SFP 2X6 MEDIUM HEIGHT ASS'Y. PRESS-FIT FOUNDRY SALES DRAWING			
2 PLACES ±0.13	±---	CHECKED BY	DATE	MOLEX INCORPORATED MOLEX INCORPORATED					
1 PLACE ±0.25	±---	JLONG	01-06-2005						
ANGULAR ± 5 °		APPROVED BY	DATE	MATERIAL NO.	DOCUMENT NO.	SHEET NO.			
DRAFT WHERE APPLICABLE MUST REMAIN WITHIN DIMENSIONS		RNELSON	02-15-2005	754771001	SD-75477-101	3 OF 4			
THIS DRAWING CONTAINS INFORMATION THAT IS PROPRIETARY TO MOLEX INCORPORATED AND SHOULD NOT BE USED WITHOUT WRITTEN PERMISSION									



BEZEL CUT-OUT CENTER DETAIL
BEZEL THICKNESS 0.8 - 2.6



SECTION Z-Z

SEE SHEET 1 EC NO: UCP2010-0369 DRAWN BY: DRWINIS BARRA 2009/07/09 CHKD: 2009/08/26 APPR: SMILLER 2009/08/27	QUALITY SYMBOLS ▽=0 ▽=0	GENERAL TOLERANCES (UNLESS SPECIFIED)		DIMENSION STYLE		SCALE	DESIGN UNITS	THIRD ANGLE PROJECTION	
		mm	INCH	MM ONLY		2:1	METRIC		
		4 PLACES ± --- ± ---		DRAWN BY	DATE	TITLE			
		3 PLACES ± --- ± ---		DROSCA	01-06-2005	STACKED SFP 2X6 MEDIUM HEIGHT ASS'Y. PRESS-FIT			
2 PLACES ± 0.13 ± ---		CHECKED BY	DATE	FOUNDRY SALES DRAWING					
1 PLACE ± 0.25 ± ---		JLONG	01-06-2005	MATERIAL NO. DOCUMENT NO.					
ANGULAR ± 5 °		APPROVED BY	DATE	754771001 SD-75477-101					
		RNELSON	02-15-2005	SHEET NO. 4 OF 4					
DRAFT WHERE APPLICABLE MUST REMAIN WITHIN DIMENSIONS		THIS DRAWING CONTAINS INFORMATION THAT IS PROPRIETARY TO MOLEX INCORPORATED AND SHOULD NOT BE USED WITHOUT WRITTEN PERMISSION							