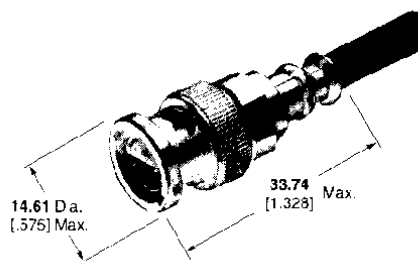
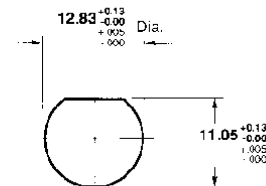
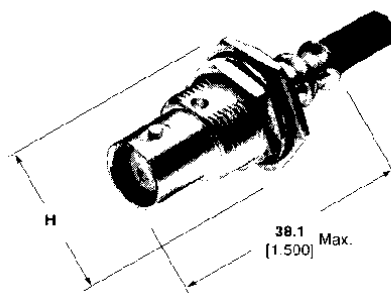


**Twin BNC Connectors** (Continued)**Plugs**

RG/U Cable	Center Contact Plating	Body Plating	Dielectric	Integral Die Hand Tool	Part No.
108, 108A	Silver	Silver	TEFLON	69667	<b>332225</b>
Belden 9272, 39272	Silver	Nicke	Polypropylene	69667	<b>332225-5</b>
Trompeter TWC-124-2	Silver	Silver	TEFLON	69667	<b>332225-3</b>
ROLM 4902401 Raychem 7824D013	Silver	Nicke	Polypropylene	69667	<b>332225-6</b>

**Bulkhead Jack**

Maximum Panel Thickness 3.18 [125]

**Recommended Panel Cutout**

H = 17.45 [687] Max. across flats, 20.32 [800] Max. across points

RG/U Cable	Center Contact Plating	Body Plating	Dielectric	CERTI-CRIMP Hand Tool with Integral Die	Integral Die Hand Tool	Die Insert for Tools: Hand Tool-69710-1, 626 Pneu. Head 318161-1	Part No.
108, 108A Belden 9272, 89272	Silver	Silver	TEFLON	—	69667	69708	<b>332342</b>