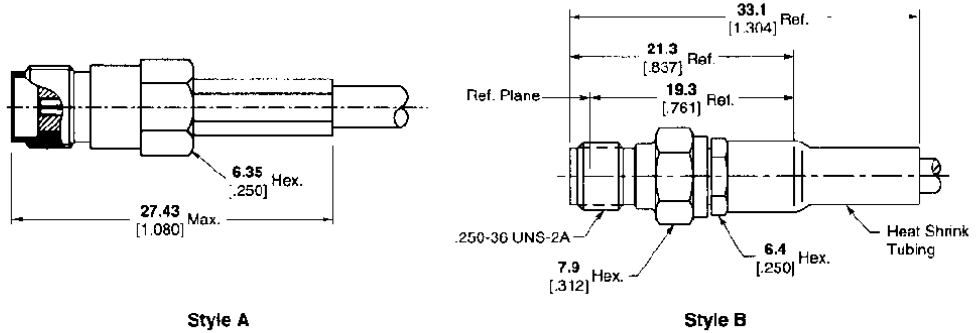
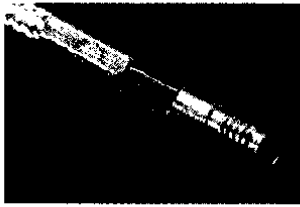


**SMA Connectors (Continued)**  
**Flexible Cable**

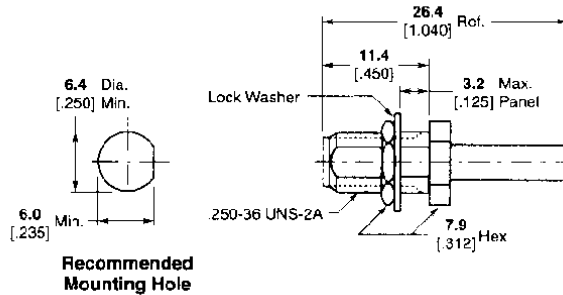
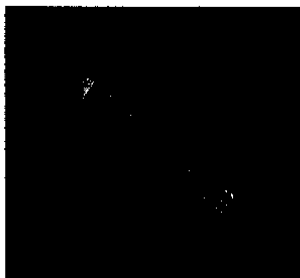
**Straight Cable Jack, Crimp**



Cable Type RG/U	Body Material & Finish	Contact Captivation	Contact Attachment	Crimp Tooling Part No.	Instruction Sheet	Style	M/A-COM Model No.	Part No.
58	Brass, Nickel	Mechanical	Solder	'	408-4032	A	—	<b>447648-1</b>
142	Brass, Nickel	Mechanical	Solder	'	408-4032	A	—	<b>447648-2</b>
174, 316	Brass, Nickel	Mechanical	Solder	'	408-4032	A	—	<b>447648-3</b>
55, 142, 223, 400	Stainless, Pass.	Mechanical	Solder	1055236-1	408-4703	B	2032-5007-02	<b>1051862-1</b>
58, 141, 303	Stainless, Pass.	Mechanical	Solder	1055236-1	408-4704	B	2032-5021-02	<b>1051867-1</b>
174, 188, 316	Stainless, Pass.	Mechanical	Solder	1055236-1	408-4708	B	2032-5003-02	<b>1051855-1</b>
178, 196	Stainless, Pass.	Mechanical	Solder	1055236-1	408-4806	B	2032-5026-02	<b>1051869-1</b>

<sup>1</sup>Refer to Tyco Customer Print for tooling requirement. Daniel's/Mil Tooling used for contact and ferrule crimp.

**Bulkhead Feedthrough  
Cable Jack, Crimp**



Cable Type RG/U	Body Material & Finish	Contact Captivation	Contact Attachment	Crimp Tooling Part No.	Instruction Sheet	M/A-COM Model No.	Part No.
174, 179, 187, 188, 316	Stainless, Pass.	Mechanical	Solder/Crimp <sup>2</sup>	1055236-1	408-4661	2834-7388-02	<b>1056452-1</b>
RD316	Stainless, Pass.	Mechanical	Solder/Crimp <sup>2</sup>	1055236-1 <sup>3</sup>	408-4661	2834-7316-02	<b>1056445-1</b>
58, 141, 303	Stainless, Pass.	Mechanical	Solder/Crimp <sup>2</sup>	1055236-1	408-4661	2834-7358-02	<b>1056450-1</b>
55, 142, 223, 400	Stainless, Pass.	Mechanical	Solder/Crimp <sup>2</sup>	1055236-1	408-4661	2834-7341-02	<b>1056447-1</b>
142	Brass, Nickel	Mechanical	Crimp	'	408-4032	—	<b>448103-1</b>
174, 188, 316	Brass, Nickel	Mechanical	Crimp	'	408-4032	—	<b>448103-2</b>

<sup>1</sup>Refer to Tyco Customer Print for tooling requirement. Daniel's/Mil Tooling used for contact and ferrule crimp.

<sup>2</sup>Use die 1055880-1 to crimp center contact.

<sup>3</sup>Use die 1055270-1 to crimp RD316 ferrule.