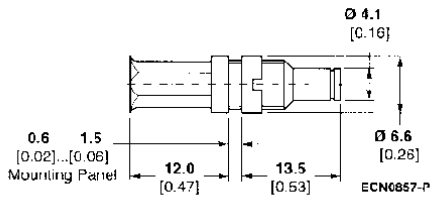


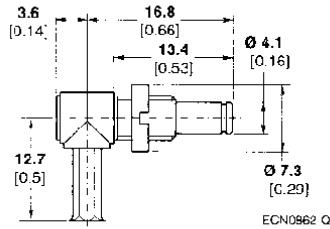
Series 1.0/2.3, 75 Ohm (Continued)

**Bulkhead Jack,
Solder/Crimp**



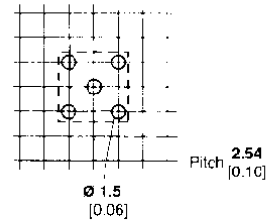
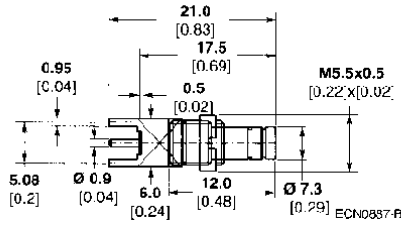
Cable	Coupling Type	Ø Max.	Part No.
RG 179	A	2.67 0.105	8-1393670-0

**Right Angle Bulkhead Jack,
Solder/Crimp**



Cable	Coupling Type	Ø Max.	Part No.
RG 179	A, F	2.67 0.105	3-1393670-2

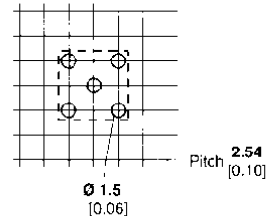
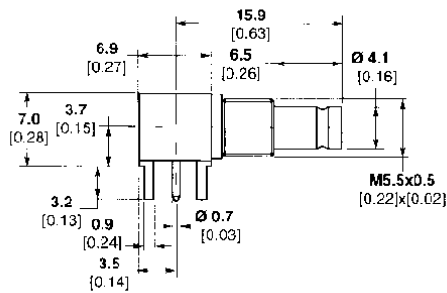
**Vertical PC Board Mount
Bulkhead Jack**



Recommended Mounting Holes

Coupling Type	Part No.
A, C, F	8-1393670-3

**Right Angle PC Board
Mount Bulkhead Jack**



Recommended Mounting Holes

Coupling Type	Part No.
A, C, F	4-1393670-0