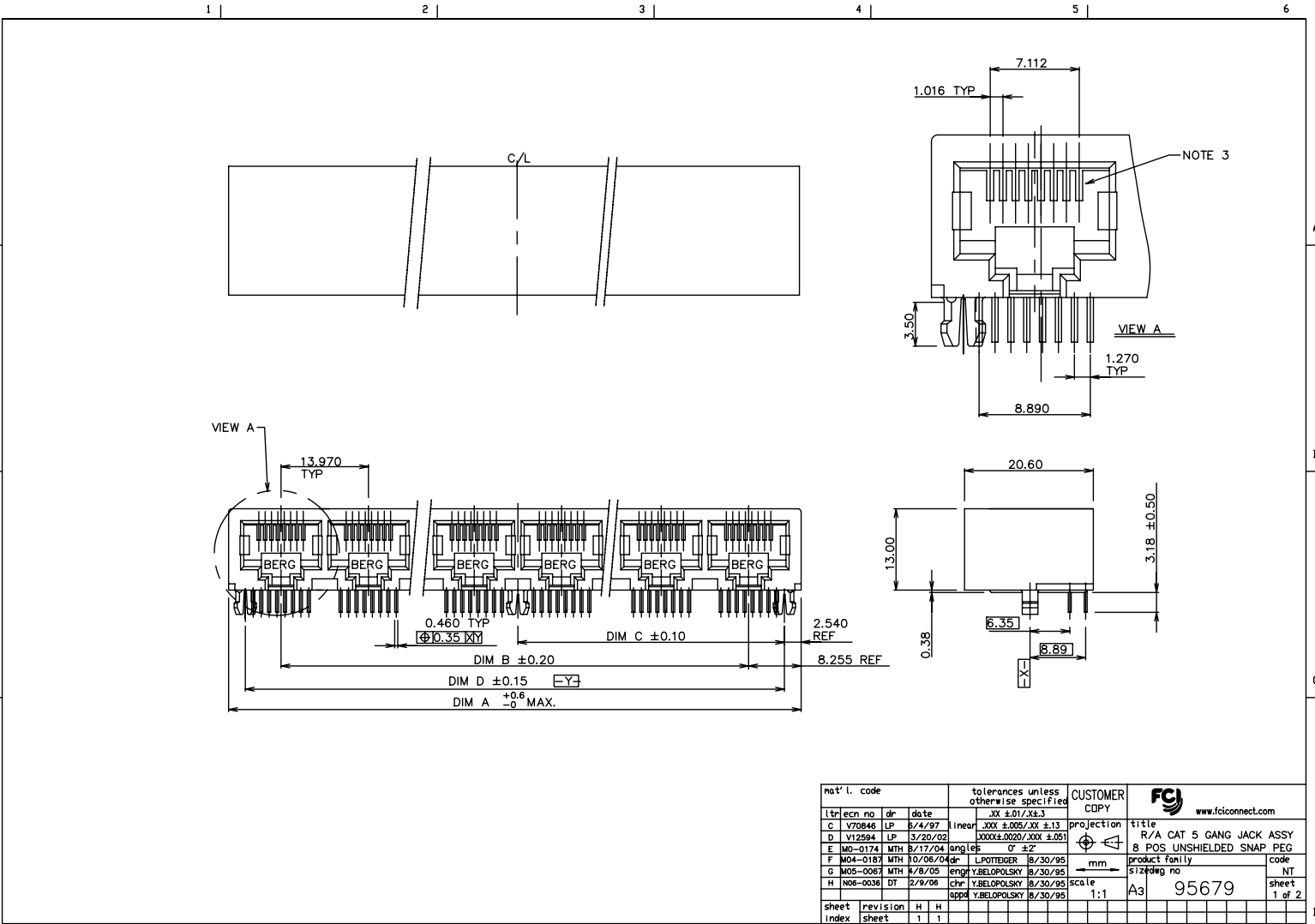


All rights strictly reserved. Reproduction or issue to third parties without the prior written consent of FCI ELECTRONICS INC. is prohibited. Toute réimpression ou utilisation sans autorisation écrite de la propriété intellectuelle de FCI ELECTRONICS INC. est formellement interdite.



mat'l. code		tolerances unless otherwise specified		CUSTOMER COPY		FCI www.fciconnect.com	
l	tr/ecn no	dr	date	linear	.XX ±.01/.XX ±.3	projection	title
C	V70846	LP	8/4/97	linear	.XX ±.005/.XX ±.13	1	R/A CAT 5 GANG JACK ASSY
D	V12594	LP	3/20/02	linear	.XXX ±.002/.XXX ±.051	1	8 POS UNSHIELDED SNAP PEG
E	M0-0174	MTH	8/17/04	angle	0° ±2°	1	product family
F	M04-0187	MTH	10/06/04	dr	LPOTTEGER 8/30/95	1	size
G	M05-0067	MTH	1/8/05	engr	YBELOPOLSKY 8/30/95	1	drawing no
H	N06-0036	DT	2/9/06	chr	YBELOPOLSKY 8/30/95	1	code
I				app	YBELOPOLSKY 8/30/95	1	NT
sheet	revision	H	H	scale	1:1	A3	95679
index	sheet	1	1				1 of 2

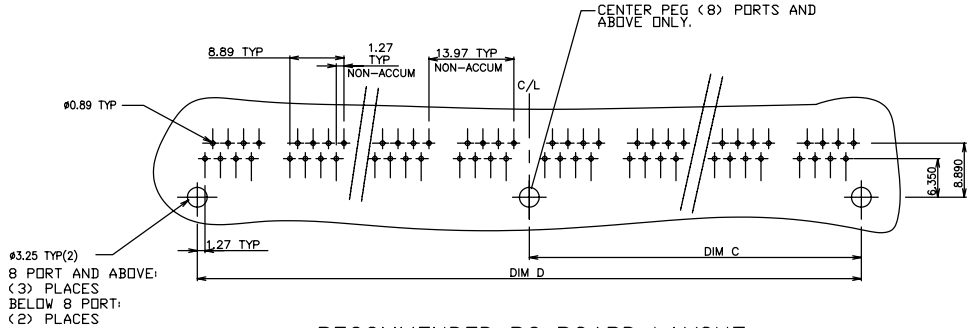
Form no. 7530-001-103 PDM: Rev:H STATUS:Released Printed: Aug 01, 2010

All rights strictly reserved. Reproduction or issue to third parties without the prior written consent of FCI ELECTRONICS INC. is prohibited. Toute réimpression ou diffusion sans autorisation écrite de FCI ELECTRONICS INC. est formellement interdite. Reproduction ou communication à des tiers interdite sans autorisation écrite de FCI ELECTRONICS INC. Propriété de FCI ELECTRONICS INC.

PRODUCT No.	PORTS No	DIM A ± 0.60 -0.00	DIM B ± 0.20	DIM C ± 0.10	DIM D ± 0.15
95679-X01/X01LF	1	15.24	-----	5.715	11.43
95679-X02/X02LF	2	30.48	13.97	12.700	25.40
95679-X03/X03LF	3	44.45	27.94	19.685	39.37
95679-X04/X04LF	4	58.42	41.91	26.670	53.34
95679-X05/X05LF	5	72.39	55.88	33.655	67.31
95679-X06/X06LF	6	86.36	69.85	40.640	81.28
95679-X06P/X06PLF	6	86.36	69.85	40.640	81.28
95679-X07/X07LF	7	100.33	83.82	47.625	95.25
95679-X08/X08LF	8	114.30	97.79	54.610	109.22
95679-X09/X09LF	9	128.27	111.76	61.595	123.19
95679-X10/X10LF	10	142.24	125.73	68.580	137.16
95679-X11/X11LF	11	156.21	139.70	75.565	151.13
95679-X12/X12LF	12	170.18	153.67	82.550	165.10

NOTE 4

- NOTES:
1. APPLICABLE PC BOARD THICKNESS: 1.6 mm.
 2. CONTACTS: PHOSPHOR BRONZE ALLOY UNS-C51000, $\emptyset 0.460$ ROUND WIRE, PLATING SEE TABLE.
 3. CENTER PEG FOR 8 PORT AND ABOVE.
 - ④ OPTIONAL CENTER PEG IN PORT 6 (95679-X06PLF) WITH CENTER PEG (95679-X06LF) WITHOUT CENTER PEG
 - ⑤ PART NUMBERS WITH LF IN THE END ARE LEAD FREE.
 4. THIS PRODUCT MEETS EUROPEAN UNION DIRECTIVES AN OTHER COUNTRY REGULATION AS DESCRIBED IN GS-22-008.
 5. THE HOUSING TEMPERATURE WITHSTAND EXPOSURE TO 260°C PEAK TEMPERATURE FOR 15 SECONDS IN A WAVE SOLDER APPLICATION WITH A 1.5 MM MINIMUM THICK CIRCUIT BOARD. SEE APPLICATION NOTES/PROCEDURES IF THEY ARE AVAILABLE.
 - ⑥ PLATING OPTION: MAY BE EITHER GOLD OR GXT PLATED AT MANUFACTURER'S OPTION.



RECOMMENDED PC BOARD LAYOUT

PLATING CODE X	PLATING ⑥
0	30u" G.X.T.
1	15u" GOLD.
2	15u" G.X.T.
3	30u" GOLD.
5	50u" GOLD.

mat'l. code	tolerances unless otherwise specified	CUSTOMER COPY	FCI www.fciconnect.com
lit/ecn no	linear .XX ±0.01/XX.3	projection	R/A CAT 5 GANG JACK ASSY
H	XXXX.0020/XXX ±0.01	angle	8 POS UNSHIELDED SNAP PEG
dr	L.POTTEGER 8/30/95	mm	product family
engr	Y.BELOPOLSKY 8/30/95	scale	size
chr	Y.BELOPOLSKY 8/30/95	1:1	95679
app	Y.BELOPOLSKY 8/30/95		code
sheet index	revision sheet 1 1		NT
			2 of 2

Form no. 7530-001-103

PDM: Rev:H STATUS:Released Printed: Aug 01, 2010