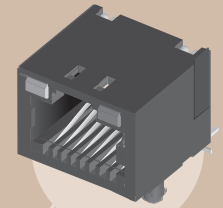


MODS-F-8P8C-U-6-1-TH



# MOD JACK WITH LEDS MODS-F SERIES

## SPECIFICATIONS

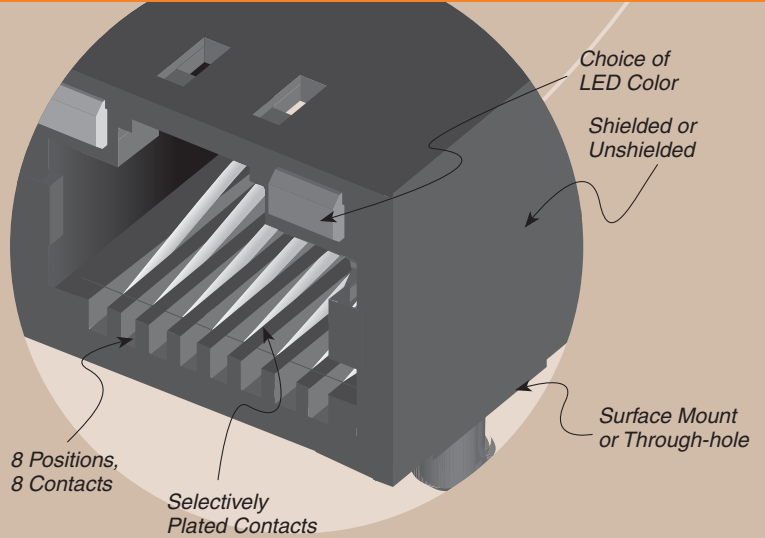
For complete specifications and recommended PCB layouts see [www.samtec.com?MODS-F](http://www.samtec.com?MODS-F)

- Insulator Material:** Nylon 46 (For both -SM and -TH)
- Contact Material:** Phosphor Bronze
- Shield Material:** Copper Alloy
- Plating:** Gold on Contacts, Nickel on Shield, Gold on Tails
- Operating Temp Range:** -25°C to +90°C
- Current Rating:** 1.5 A per contact
- Voltage Rating:** 120 VAC max
- Contact Resistance:** 20 mΩ max
- Minimum Cycles:** 500
- System Applications:** CAT3
- Packaging:** Packaged and shipped in Bulk Packaging Trays; Trays suitable for automation are available upon request.
- RoHS Compliant:** Yes
- Lead-Free Solderable:** Yes (Wave Solder only)



## APPLICATION SPECIFIC OPTION

Other plating options available. Call Samtec.



MODS	F	8P8C	PLATING	SHIELD OPTION	LED 1	LED 2	TAIL	TR
		<b>-8P8C</b> = 8 Positions 8 Contacts	<b>-L</b> = 15μ" (0,38 μm) Gold on Mating Area, Gold Flash on Tails	<b>(Leave Blank for Unshielded)</b> <b>-S</b> = Shielded (No Panel Grounds)	<b>-G</b> = Green	<b>-Y</b> = Yellow	<b>-SM</b> = Surface Mount	<b>-TR</b> = Tape & Reel (Surface Mount only)
			<b>-U</b> = 50μ" (1,27 μm) Gold on Mating Area, Gold Flash on Tails	<b>-S4</b> = Shielded with Top, Bottom and Side Panel Grounds	<b>-1*</b> = Green/Orange	<b>-2*</b> = Yellow/Orange	<b>-TH</b> = Through-hole	
					<b>-3*</b> = Green/Red	<b>-4*</b> = Yellow/Red		
					<b>-5*</b> = Green/Yellow	<b>-6*</b> = Yellow/Green		
					<b>-N</b> = No LED (LED 1 -N requires LED 2 -N)			
					<b>*Voltage Forward/Reverse</b>			

Due to technical progress, all designs, specifications and components are subject to change without notice.