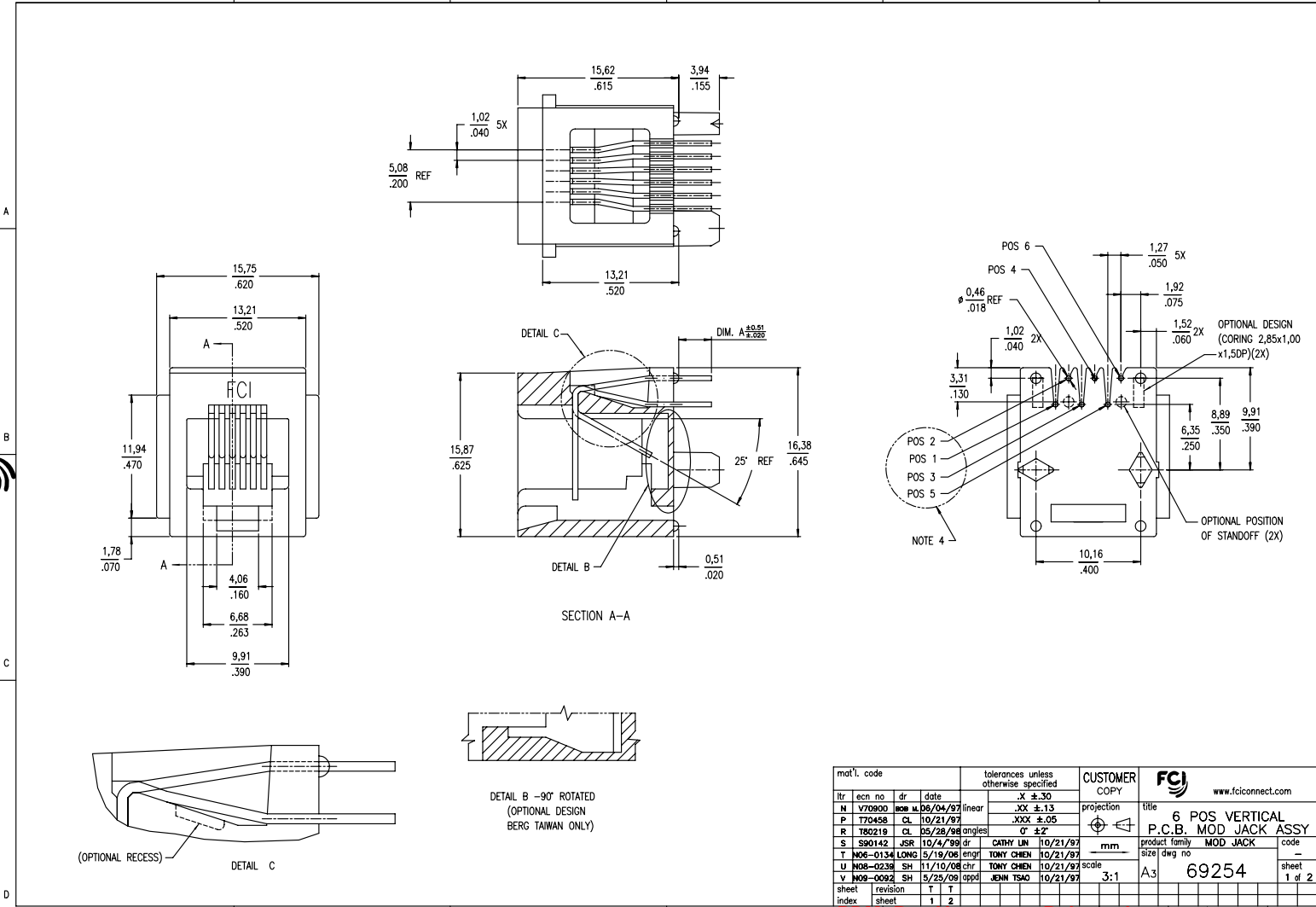


Tous droits strictement réservés. Reproduction ou communication à des tiers interdite sous quelque forme que ce soit sans autorisation écrite du propriétaire. Propriété de © FCI ELECTRONICS INC. Droits de reproduction FCI ELECTRONICS INC.

All rights strictly reserved. Reproduction or issue to third parties in any form whatever is not permitted without written authority from the proprietor. Property of © FCI ELECTRONICS INC. Copyright FCI ELECTRONICS INC.



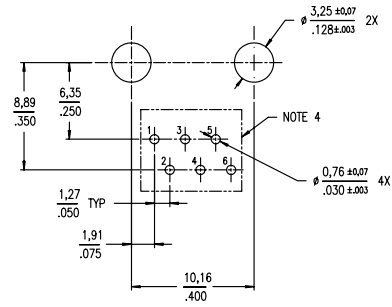
mat'l. code		tolerances unless otherwise specified		CUSTOMER COPY		FCI www.ficonnect.com	
itr	ecr no	dr	date		projection	title	
N	V70900	ML	05/04/97	linear	XXX ±.13	6 POS VERTICAL P.C.B. MOD JACK ASSY	
P	T70458	CL	10/21/97		.XXX ±.05		
R	T80218	CL	05/28/98	angles	G ±.2		
S	S90142	JSR	10/4/99	dr		product family MOD JACK	code -
T	M06-0134	LONG	5/19/08	engr		size	dwg no
U	M06-0238	SH	11/10/08	chr		scale	
Y	M09-0092	SH	5/25/09	appr		3:1	A3
sheet	revision	T	T				69254
index	sheet	1	2				1 of 2

PDM: Rev:V STATUS:Released Printed: Aug 01, 2010 6

Tous droits strictement réservés. Reproduction ou communication a des tiers interdite sous quelque forme que ce soit sans autorisation écrite du propriétaire.
 Property of © FCI ELECTRONICS INC.
 Droits de reproduction FCI ELECTRONICS INC.

PRODUCT NO.	POSITIONS LOADED	CONTACT PLATING	HOUSING COLOR	DIM. A	NOTES
69254-001/001LF	ALL	30u" GXT	BLACK	3.18	-
-002/002LF	2,3,4,5	30u" GXT	BLACK		-
-003/003LF	3,4	30u" GXT	BLACK		-
-004/004LF	2,3,4,5	30u" /0,76u Au	BLACK		-
-005/005LF	3,4	50u" /1,27u Au	BLACK		-
-006/006LF	3,4	30u" /0,76u Au	BLACK		-
-007/007LF	ALL	50u" /1,27u Au	BLACK		-
-008/008LF	ALL	30u" /0,76u Au	BLACK		-
-009	ALL	30u" GXT	BLACK		NOTE 1
-010	2,3,4,5	50u" /1,27u Au	BLACK		-
-011	ALL	30u" GXT	GREY		-
-012	2,3,4,5	15u" GXT	BLACK		-
-001A	ALL	30u" GXT	BLACK		NOTE 3
-001L	ALL	30u" GXT	BLACK		3.94
-002L	2,3,4,5	30u" GXT	BLACK	-	
-013	3,4	6u" /0.15um Au	BLACK	3.18	-
-014	2,3,4,5	2u" /0.05um Au	BLACK	3.18	-
69254-001HLF	ALL	30u" GXT	BLACK	3.18	-
-002HLF	2,3,4,5	30u" GXT	BLACK		-
-003HLF	3,4	30u" GXT	BLACK		-
-004HLF	2,3,4,5	30u" /0,76u Au	BLACK		-
-005HLF	3,4	50u" /1,27u Au	BLACK		-
-006HLF	3,4	30u" /0,76u Au	BLACK		-
-007HLF	ALL	50u" /1,27u Au	BLACK		-
-008HLF	ALL	30u" /0,76u Au	BLACK		-

H: MEETS PIP PROCESS PRODUCT NO.



BOARD LAYOUT VIEWED FROM TOP

- NOTE :
- SPECIAL PACKAGING.
 - GXT IS 0,76um / 30u" OR 0,28um / 15u" MIN GXT WITH Au FLASH OVER 1,27um / 50u" MIN Ni.
 - ALL THE SPECS OF 69254-001A ARE SAME AS 69254-001 EXCEPT THE HSG HAS NO ANY "OPTIONAL DIMS".
 - THIS PIN NUMBERING IS OPPOSITE TO FCC, PART 68, SUBPART F REQUIREMENTS.
 - ADD "LF" SUFFIX AT THE END OF PART NUMBER FOR LEAD FREE OPTION.
 - IF "LF" P/N THE PRODUCT MEETS EUROPEAN UNION DIRECTIVES AND OTHER COUNTRY REGULATION AS DESCRIBED IN GS-22-008.
 - THE HOUSING WILL WITHSTAND EXPOSURE TO 260° PEAK TEMPERATURE FOR 15 SECONDS IN A WAVE SOLDER PROCESS.
 - PLATING OPTIONS:
MAY BE EITHER GOLD OR GXT PLATED AT MANUFACTURER'S OPTION.

mat'l. code	tolerances unless otherwise specified	CUSTOMER COPY	FCI	www.fciconnect.com
lfr	.X ±.30	projection	title 4 POS VERTICAL P.C.B. MOD JACK ASSY	
v	.XXX ±.05	mm	product family	MOD JACK
angles	0° ±.2°	scale	size	dwg no
dr	CATHY LIN 10/21/97	3:1	A3	69254
engr	TONY CHEN 10/21/97	sheet	revision	sheet
chr	TONY CHEN 10/21/97	index	2 of 2	2 of 2
appd	JENN TSAO 10/21/97			

PDM: Rev:V STATUS:Released Printed: Aug 01, 2010 6