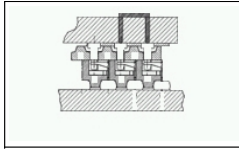


2-1674770 -6 Product Details

Live Product Chat US Only
8:30am - 5pm ET, Mon - Fri



2-1674770 -6

[Active](#)

PGA Sockets

[Always EU RoHS/ELV Compliant](#) ([Statement of Compliance](#))

Product Highlights:

- ? Zero Insertion Force
- ? Number of Positions = 478
- ? PCB Mount Style = Surface Mount
- ? Grid Size = 26x26
- ? Grid Spacing = 1.27 x 1.27 mm

[View all Features](#) | [Find Similar Products](#)

Quick Links

- [Check Pricing & Availability](#)
- [Search for Tooling](#)
- [Product Feature Selector](#)
- [Contact Us About This Product](#)

Documentation & Additional Information

Product Drawings:
? [PACKING ASSY mPGA47X SOCKET LEAD FREE BALL](#) (PDF, English)

Catalog Pages/Data Sheets:
? None Available

Product Specifications:
? [mPGA SOCKET 479&478X \(3H\) CAM TYPE for Mobile PC](#) (PDF, Japanese)

Application Specifications:
? None Available

Instruction Sheets:
? [mPGA Socket 479&478X \(3H\) CAM TYPE for Mobile PC](#) (PDF, Japanese)

CAD Files: ([CAD Format & Compression Information](#))
? [2D Drawing](#) (DXF, Version K)
? [3D Model](#) (IGES, Version K)
? [3D Model](#) (STEP, Version K)

[List all Documents](#)

Additional Information:
? [Product Line Information](#)

Related Products:
? [Tooling](#)

Product Features (Please use the Product Drawing for all design activity)

Product Type Features:

- ? [Insertion Force](#) = Zero
- ? [Number of Positions](#) = 478
- ? PCB Mount Style = Surface Mount
- ? [Grid Size](#) = 26x26
- ? [Grid Spacing \(mm \[in\]\)](#) = 1.27 x 1.27 [.050 x .050]
- ? [Chip Compatibility](#) = Intel ® Pentium ® 4 (mPGA478B pattern)
- ? [Frame Style](#) = Open
- ? [Heat Sink Attachment](#) = Without
- ? [ZIF Actuator](#) = Screwdriver/Cam
- ? [Profile](#) = Low
- ? Cover Material = High Temperature Thermoplastic
- ? Leg Style = Ball Grid Array (BGA)
- ? Comment = Sn/Ag/Cu solderballs.

Termination Related Features:
? Socket Identifier = mPGA478B

Body Related Features:
? Pick and Place Cover = Plastic CAP
? Cover Color = Purple
? Socket Overall Height (mm [in]) = 3 [0.118]

Contact Related Features:
? [Contact Style](#) = Stamped + Formed
? Contact Material = Copper Alloy
? Contact Mating Area Plating = Gold (30)

Housing Related Features:

- ? Housing Color = Black
- ? Housing Material = Thermoplastic High Temperature
- ? Housing Flammability Rating = UL 94V -0
- ? Housing Material Temperature = High

Industry Standards:

- ? [RoHS/ELV Compliance](#) = RoHS compliant, ELV compliant
- ? [Lead Free Solder Processes](#) = Reflow solder capable to 245°C
- ? RoHS/ELV Compliance History = Always was RoHS compliant

Operation/Application:
? [Application](#) = Production

Packaging Related Features:
? Packaging Method = Tray
? Packaging Quantity = 30

Other:
? Brand = AMP