

SIMM Sockets — with Metal Latches, .050 [1.27] CL (Continued)

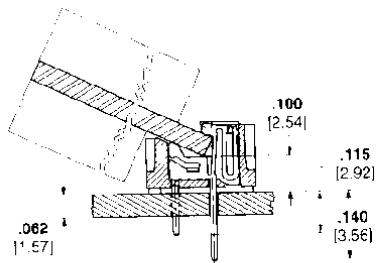
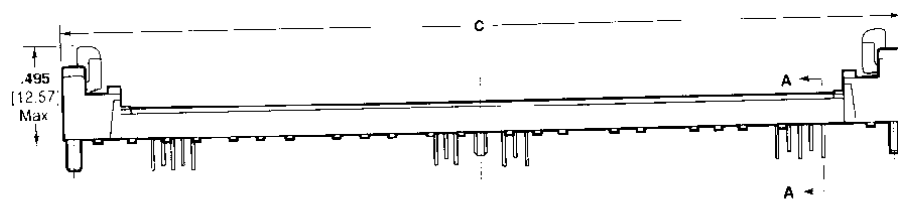
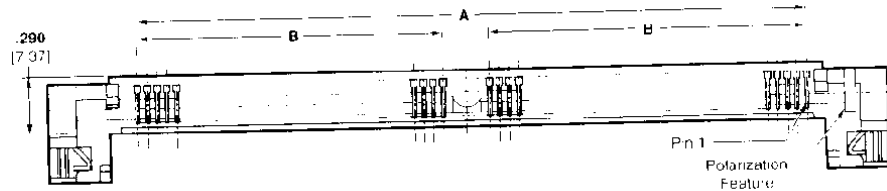
Low Profile (22°) Single Row with Split Retention Post

Material and Finish

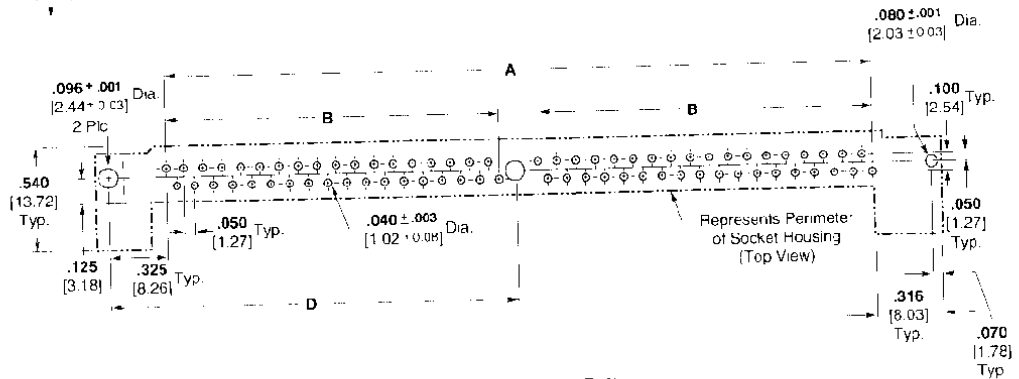
Housing — Liquid Crystal Polymer (LCP) UL 94V-0

Contacts — Phosphor bronze with .000200 [0.00508] min. thick tin-lead over .000050 [0.00127] min. thick nickel or .000030 [0.00076] min. thick gold on contact area and .000150 [0.0038] min. thick tin-lead on solder tails, all over .000050 [0.00127] min. thick nickel

Latch — Stainless steel



Section A-A



Recommended PC Board Hole Pattern

No. of Pos.	Dimensions				Tin Plate	Gold Plate
	A	B	C	D		
64	3.350	1.550	4.140	2.000	822110-1	—
	85.09	39.37	105.16	50.80		
72	3.750	1.750	4.540	2.200	822110-3	822097-3
	95.25	44.45	115.32	55.88		

Note: See page 35 for module layout.

For drawings, technical data or samples, contact your AMP sales engineer or call the AMP Product Information Center, 1-800-522-6752. Dimensions are in inches and millimeters unless otherwise specified. Values in brackets are metric equivalents. Specifications subject to change. Consult AMP for latest specifications.