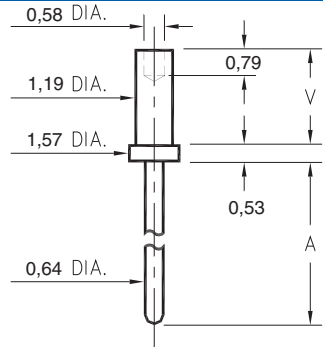


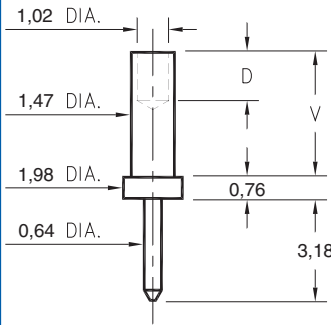
3130/3134/3151



| Basic Part Number | Board Thickness | Length A | Length V |
|-------------------|-----------------|----------|----------|
| 3134-1 | 0,79 | 2,01 | 1,30 |
| 3134-2 | 1,57 | 2,01 | 2,08 |
| 3134-3 | 2,39 | 2,01 | 2,87 |
| 3134-4 | 3,18 | 2,01 | 3,68 |
| 3130-1 | 0,79 | 4,55 | 1,30 |
| 3130-2 | 1,57 | 4,55 | 2,08 |
| 3130-3 | 2,39 | 4,55 | 2,87 |
| 3130-4 | 3,18 | 4,55 | 3,68 |
| 3151-1 | 0,79 | 12,17 | 1,30 |
| 3151-2 | 1,57 | 12,17 | 2,08 |
| 3151-3 | 2,39 | 12,17 | 2,87 |
| 3151-4 | 3,18 | 12,17 | 3,68 |

31XX-X-00-XX-00-00-08-0
Swage mount in 1,32 hole

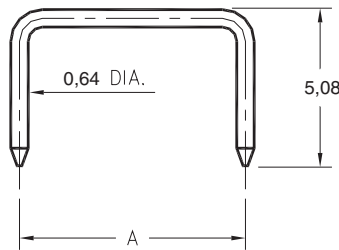
3113



| Basic Part Number | Board Thickness | Length V | Depth D |
|-------------------|-----------------|----------|---------|
| 3113-1 | 0,79 | 1,57 | 1,02 |
| 3113-2 | 1,57 | 2,39 | 1,57 |
| 3113-3 | 2,39 | 3,18 | 1,57 |
| 3113-4 | 3,18 | 3,96 | 1,57 |

3113-X-00-XX-00-00-08-0
Swage mount in 1,57 hole

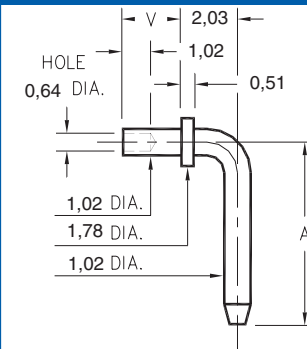
3360



| Basic Part Number | Pin Centers A |
|-------------------|---------------|
| 3360-1 | 5,08 |
| 3360-2 | 6,35 |
| 3360-3 | 7,62 |
| 3360-4 | 10,16 |
| 3360-5 | 12,7 |

3360-X-14-XX-00-00-08-0
Shorting Jumper

3301 → 3304

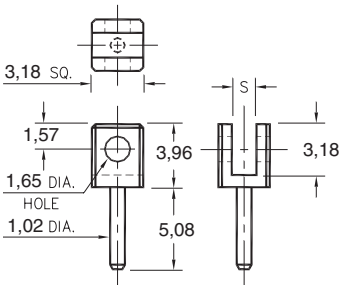


| Basic Part Number | Pin Centers A |
|-------------------|---------------|
| 3301-X | 6,53 |
| 3302-X | 9,07 |
| 3303-X | 9,53 |
| 3304-X | 14,27 |

| - X - | Board Thickness | Length V |
|-------|-----------------|----------|
| 1 | 0,79 | 1,30 |
| 2 | 1,57 | 2,08 |
| 3 | 2,39 | 2,87 |

330X-X-14-XX-00-00-08-0
Specify board thickness
Swage mount in 1,09 hole

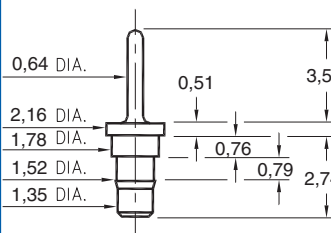
3620



| Basic Part Number | Board Thickness | Slot S |
|-------------------|-----------------|--------|
| 3620-1 | 0,79 | 1,19 |
| 3620-2 | 1,57 | 1,91 |

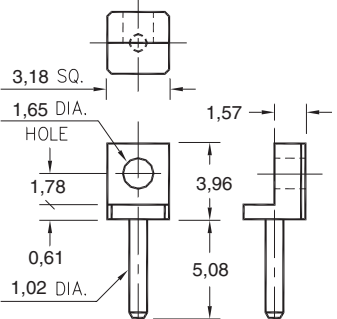
3620-X-32-XX-00-00-08-0
Board edge rivet mount

0940



0940-0-00-XX-00-00-03-0
Press-fit in 1,45 mounting hole

3621



3621-0-32-XX-00-00-08-0
Board edge rivet mount

SPECIFICATIONS

PIN MATERIAL:
Brass Alloy 360, 1/2 Hard
(Except Swage pins which are annealed)

PART MANUFACTURED IN INCHES, METRIC FOR REF ONLY

TOLERANCES ON:
LENGTHS: ± 0,13
DIAMETERS: ± 0,05
ANGLES: ± 2°

ORDER CODE: XXXX - X - XX - XX - 00 - 00 - 0X - 0

BASIC PART #

SPECIFY PIN FINISH:

- 01 5,08µm TIN/LEAD OVER NICKEL
- 80 5,08µm TIN OVER NICKEL
- 15 0,25µm GOLD OVER NICKEL
- 21 0,51µm GOLD OVER NICKEL
- 34 1,27µm GOLD OVER NICKEL

