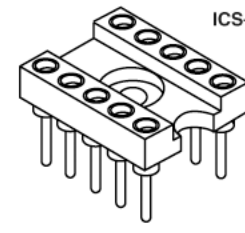
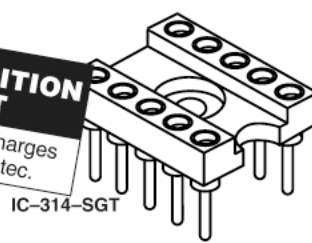




MOLD-TO-POSITION PRODUCT
Minimums or set-up charges may apply. Call Samtec.



SCREW MOUNT DIP SOCKETS IC & ICS SERIES

Mates with:
AP, APS, APO,
APA, APE, APH

Highest reliability DIP sockets

IC and ICS series DIP sockets feature U.L. rated G.F. polyester body with mounting holes and use precision machined lead sockets for high reliability in the most demanding applications.

Specifications:

IC & ICS

Insulator Material: Black Glass Filled Polyester

Flammability Rating: UL 94V-0

Insulation Resistance: 5000 megohm @ 500 VDC

Temperature Range: -55°C to +125°C

Withstanding Voltage: 1000 VRMS @ 60 Hz

Contact: BeCu

Shell: Brass except style K Phosphor Bronze

Plating: Au over 50µm Ni or Sn over 100µm Cu or 50µm Ni

Current Rating: 1 amp continuous @ 100 VDC per contact

Contact Resistance: 10 milliohms @ 200 milliamperes

Socket Retention in Body: 5 lbs against barb

Lead Size Range: .015" to .022" DIA and most IC leads

Insertion Force: Standard = 9 oz avg, 16 oz max (.017" DIA probe); Low Insertion Force = 2.5 oz avg, 5.5 oz max (.018" DIA probe)

Withdrawal Force: Standard = 2.5 oz avg, 1.5 oz min (after 12 insertions with .017" DIA probe); Low Insertion Force = 2.0 oz avg, 0.35 oz min (after 12 insertions with .018" DIA probe)

Notes: Some sizes, styles and options are non-standard, non-returnable.

TYPE SOCKET	ROW SPACING & NO. OF CONTACTS	
IC = IC Socket		
ICS = IC Socket		

-S*, -A*, -J, or -K
= Printed Circuit
*For LIF Specify -ZS or -ZA

LEAD STYLE	X DIA	Y TAIL	Z
-S or -ZS	(0.51) .020	(3.18) .125	(7.62) 300
-A or -ZA	(0.51) .020	(4.57) .180	(8.89) 350
-J	(0.64) .025	(10.41) 410	(15.24) 600
-K	(0.89) .035	(12.95) 510	(17.86) 703

Locking lead (-L) available. See OPTION.

Style S, ZS, A, ZA & J Insertion Depth = .095" to .150"
Style S Component Part No. = SC-1P1
Style ZS Component Part No. = EZ-1P1
Style A Component Part No. = SC-6P1
Style ZA Component Part No. = EZ-6P1
Style J Component Part No. = SC-1P3
Option L Insertion Depth = .095" to .150"
Option L Component Part No. = SC-1L1 or EZ-1L1
Style K Insertion Depth = .125" to .170"
Style K Component Part No. = SC-2P1

Low Insertion Force (LIF) Contacts Available.

-306 = .300 Row 6Contacts	-314 = .300 Row 14 Contacts	-610 = .600 Row 10 Contacts
-308 = .300 Row 8 Contacts	-316 = .300 Row 16 Contacts	-614 = .600 Row 14 Contacts
-310 = .300 Row 10 Contacts	-318 = .300 Row 18 Contacts	-616 = .600 Row 16 Contacts
	-320 = .300 Row 20 Contacts	-618 = .600 Row 18 Contacts
	-324 = .300 Row 24 Contacts	
	-422 = .400 Row 22 Contacts	
	-424 = .400 Row 24 Contacts	

Part No.	A Length	B Width
IC or ICS-306	(8.89) .350	(10.16) .400
IC or ICS-308	(11.43) .450	(10.16) .400
IC or ICS-310	(13.97) .550	(10.16) .400

* Mounting hole off center on 10 position.

Part No.	A Length	B Width	E Mnt Holes
IC or ICS-314	(17.78) .700	(10.16) .400	(10.16) .400
IC or ICS-316	(20.32) .800	(10.16) .400	(12.70) .500
IC or ICS-318	(22.86) .900	(10.16) .400	(15.24) .600
IC or ICS-320	(25.40) 1.000	(10.16) .400	(17.78) .700
IC or ICS-324	(30.48) 1.200	(10.16) .400	(22.86) .900
IC or ICS-422	(27.94) 1.100	(10.16) .400	(20.32) .800
IC-424	(30.48) 1.200	(12.70) .500	(22.86) .900

Part No.	A Length
IC-610	(12.70) .500
IC-614	(17.78) .700
IC-616	(20.32) .800
IC-618	(22.86) .900

Due to technical progress, all designs, specifications and components are subject to change without notice.

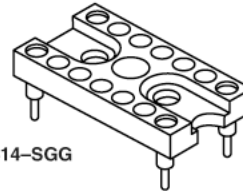
WWW.SAMTEC.COM

SAMTEC USA • Tel: 1-800-SAMTEC-9 or 812-944-6733 • Fax: 812-948-5047
 SAMTEC GERMANY • Tel: +49 (0) 89 / 89460-0 • Fax: +49 (0) 89 / 89460-299
 SAMTEC JAPAN • Tel: 045-475-1385 • Fax: 045-475-1340
 SAMTEC CHINA • Tel: 86-21-61103766 • Fax: 86-21-53854047
 SAMTEC INDIA • Tel: +91-80-3272 1612 • Fax: +91-80-4152 8187
 SAMTEC TAIWAN • Tel: 886 02 2698-3367 • Fax: 886 02 8698-2159
 SAMTEC SOUTH AFRICA • Tel: 27 11 4528112 • Fax: 27 86 6714432
 SAMTEC ANZ • Tel: 613 9512 7747 • Fax: 613 9512 7745



MOLD-TO-POSITION PRODUCT

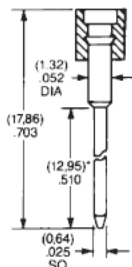
Minimums or set-up charges may apply. Call Samtec.



CO-314-SGG

LEAD STYLE

-W
= Wire-Wrap
For LIF Specify -ZW



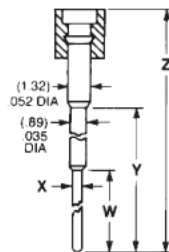
Shorter w/w tail lengths available. See OPTION.

Insertion Depth = .125" to .170"
Style W Component Part No. = SC-1W1(1)
Style ZW Component Part No. = EZ-1W1(1)
Style W-2 Component Part No. = SC-1W1(2)
Style ZW-2 Component Part No. = EZ-1W1(2)
Style W-3 Component Part No. = SC-1W1(3)
Style ZW-3 Component Part No. = EZ-1W1(3)

-E or -H
= Elevated
For LIF Specify -ZE or -ZH

LEAD STYLE	X DIA	W TAIL	Y	Z
-E or -ZE	(0.51) .020	(4.32) .170	(8.86) .349	(13.77) .543
-H or -ZH	(0.46) .018	(3.81) .150	(12.95) .510	(17.86) .703

Insertion Depth = .125" to .175"
Style E Component Part No. = SC-2P3
Style ZE Component Part No. = EZ-2P3
Style H Component Part No. = SC-2P2
Style ZH Component Part No. = EZ-2P2



PLATING OPTION

GG
= 30µ" Gold Contact
10µ" Gold Shell

GT
= 30µ" Gold Contact
Tin Shell

TT
= Tin Contact and Shell
(-S, -ZS, -W, -ZW, -A, -H only)

ST
= 10µ" Gold Contact
Tin Shell
(-S & -ZS only)

OPTION
(Leave Blank for Standard Version)

-2
= (9.14) .360 Wire-Wrap Tail

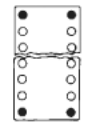
Wire-Wrap Option
Requires Style -W or -ZW

-3
= (6.60) .260 Wire-Wrap Tail

Specify desired suffix for shorter Wire-Wrap tail.

Requires Style -S or -ZS and .035"±.003" board hole.

-L
= Locking Socket



-624 = .600 Row / 24 Contacts

-628 = .600 Row / 28 Contacts

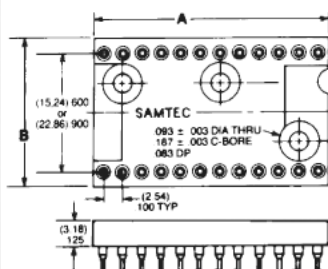
-632 = .600 Row / 32 Contacts

-640 = .600 Row / 40 Contacts

-940 = .900 Row / 40 Contacts

-950 = .900 Row / 50 Contacts

-964 = .900 Row / 64 Contacts



Part No.	A Length	B Width
IC or ICS-624	(30.48) 1.200	(17.78) .700
IC or ICS-628	(35.56) 1.400	(17.78) .700
IC or ICS-632	(40.64) 1.600	(17.78) .700
IC or ICS-640	(50.80) 2.000	(17.78) .700
*IC-940	(63.50) 2.500	(26.27) 1.050
*IC-950	(81.28) 3.200	

*IC-940 and IC-950 are non-standard non-returnable.

†Mounting hole off center on 50 positions

CRYSTAL OSCILLATOR CO SERIES

SPECIFY PART NUMBER FROM CHART BELOW

Part Number	Termination Suffix*		Number of Contacts	Contact Finish	Shell Finish
	P.C.	W/W			
CO-314	-SGG	-WGG	4	Gold Gold Tin	Gold Tin Tin
	-SGT	-WGT			
	-STT	-WTT			
CO-316	-SGG	-WGG	4	Gold Gold Tin	Gold Tin Tin
	-SGT	-WGT			
	-STT	-WTT			
CO-624	-SGG	-WGG	4	Gold Gold Tin	Gold Tin Tin
	-SGT	-WGT			
	-STT	-WTT			

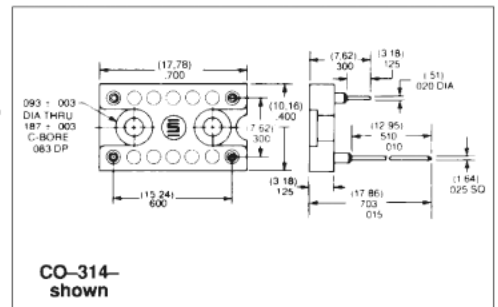
*For LIF contacts substitute -ZS for -S and -ZW for -W.

Crystal Oscillator

Accepts any component leads from .015" to .022" diameter. Low profile with precision machined lead sockets for high retention and reliability.

Specifications: CO

Same as IC Series.



CO-314-shown

OPTION
(Leave Blank for Standard Version)

-2
= (9.14) .360 Wire-Wrap Tail

Wire-Wrap Option
Requires Style -W or -ZW

-3
= (6.60) .260 Wire-Wrap Tail

Specify desired suffix for shorter Wire-Wrap tail.

Due to technical progress, all designs, specifications and components are subject to change without notice.

WWW.SAMTEC.COM

SAMTEC USA • Tel: 1-800-SAMTEC-9 or 812-944-6733 • Fax: 812-948-5047 SAMTEC SILICON VALLEY • Tel: 408-395-5900 • Fax: 408-395-1520 SAMTEC UK • Tel: 01236 739292 • Fax: 01236 727113
SAMTEC GERMANY • Tel: +49 (0) 89 / 89460-0 • Fax: +49 (0) 89 / 89460-299 SAMTEC FRANCE • Tel: 01 60 95 06 60 • Fax: 01 60 95 06 61 SAMTEC ITALY • Tel: 39 039 6890337 • Fax: 39 039 6890315
SAMTEC SCANDINAVIA • Tel: +46-84477280 • Fax: +46-87420413 SAMTEC ISRAEL • Tel: 972-3-7526600 • Fax: 972-3-7526690 SAMTEC INDIA • Tel: +91-80-3272 1612 • Fax: +91-80-4152 8187

SAMTEC ASIA PACIFIC • Tel: 65 6745-5955 • Fax: 65 6841-1502 SAMTEC JAPAN • Tel: 045-475-1385 • Fax: 045-475-1340 SAMTEC CHINA • Tel: 86-21-61103766 • Fax: 86-21-53854047 SAMTEC TAIWAN • Tel: 886 02 2698-3367 • Fax: 886 02 8698-2159
SAMTEC HONG KONG • Tel: 852 2690-8881 • Fax: 852 2690-4842 SAMTEC KOREA • Tel: 82-31-717-5685 • Fax: 82-31-717-5681 SAMTEC SOUTH AFRICA • Tel: 27 11 4528112 • Fax: 27 86 6714432 SAMTEC ANZ • Tel: 613 9512 7747 • Fax: 613 9512 7745