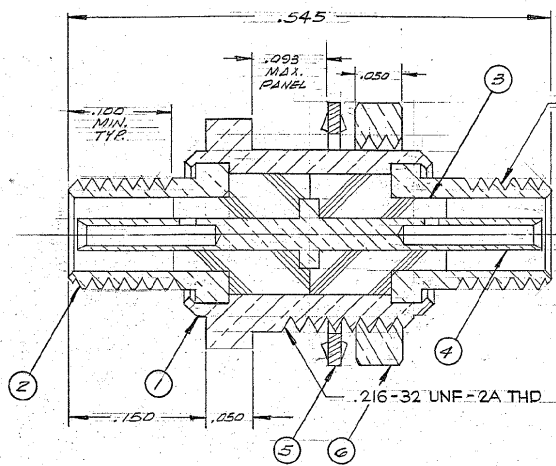
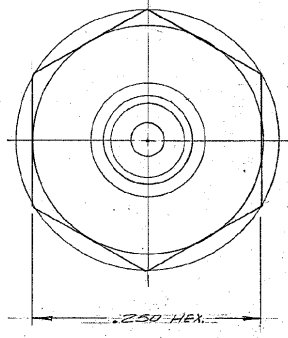


CODE 143-0005-0001 C

These drawings and specifications are the property of Microdot Inc. and shall not be divulged, reproduced or copied, or used as the basis for the manufacture or sale of any article without written permission of Microdot Inc.



.125-44 UNF-2A THD (MODIFIED)

1	014-0062-0002	NUT	BRASS, PER QQ-B-626	△	6
1	014-0063-0002	LOCK WASHER	#425 BRONZE ALLOY	△	5
1	014-0061-0002	CONTACT	COPPER ALLOY	△	4
2	014-0060-0001	INSULATOR	TEFLON, L-P-403		3
2	014-0059-0002	ADAPTER	BRASS, PER QQ-B-626	△	2
1	014-0058-0002	HOUSING	BRASS, PER QQ-B-626	△	1
QTY	PART NUMBER	NOMENCLATURE	MAT'L & SPEC.	FINISH	ITEM

3. ELECTRICAL REQUIREMENTS:  
 TEST VOLTAGE 450 V.E.M.S.  
 INSULATION RESISTANCE 10<sup>9</sup> MEG-OHMS MIN.  
 △ GOLD PLATE PER MIL-S-88204, TYPE II, CLASS I.  
 1. THIS CONNECTOR MATES WITH ALL DEPARTMENT 142 SCREW-ON-SERIES PLUGS.  
 NOTES: UNLESS OTHERWISE SPECIFIED  
 CX2043

STANDARD TOLERANCES UNLESS OTHERWISE SPECIFIED DEC. ± .010 FRAG. ± ANGLES ± ECCENTRICITY ± HOLE DIA. ± SURFACE ROUGHNESS MAX. T.I.R. ± MICRO INCHES THREADS TO MIL-S-774 COMMERCIAL TOLERANCES APPLY TO STOCK DIMENSIONS		MALCO A MICRODOT COMPANY, INC. 220 PASADENA AVE., SO. PASADENA, CAL	
SURFACE TREATMENT NOTED		MATERIAL NOTED	
APP. 5/2/67		CHECKED BY J. JENSEN	
DRAWN BY J. JENSEN		SCALE 10X	
DATE 9/17/67		DRAWING NUMBER	
PROD. CODE 946		CDM 143-0005-0001 C	