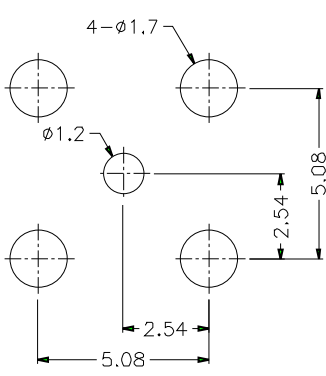
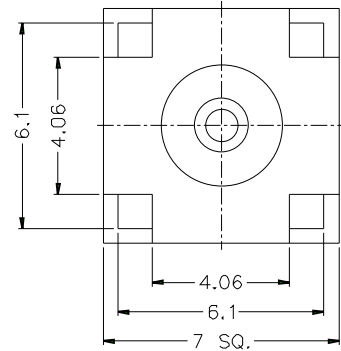
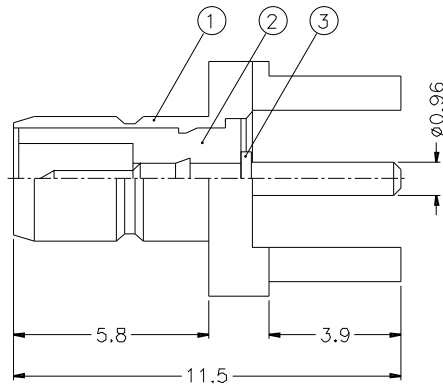


ISS		ZONE		REVISIONS		DESCRIPTION\PER REQUEST\DATE	



PCB MOUNTING HOLE



NOTES: FINISH (PLATING THICKNESS IN MICRO-INCHES)

1. BRASS PER QQ-B-626
2. GOLD PL. 3 MIN. THICK OVER NICKEL PL. 100 MIN. THICK OVER COPPER STRIKE
3. GOLD PL. 30 MIN. THICK OVER NICKEL PL. 100 MIN. THICK OVER COPPER STRIKE
4. TEFLON MIL-P-19468

DIMENSIONS ARE IN MILLIMETERS		PART NO. SMB1251B1-3GT30G-50	
UNLESS OTHERWISE SPECIFIED TOLERANCES		APPROVED	DATE 10-11-01'
0.5-6 = ±0.2		CHECKED	DATE 10-11-01'
6-30 = ±0.4		DRAWN	DATE 10-11-01'
30-120 = ±0.6			
120-315 = ±1			
315-1000 = ±1.6			
1000-2000 = ±2.4			
3	CONTACT PIN	NOTE 1	NOTE 3
1			
2	INSULATOR	NOTE 4	NATURAL
1			
1	BODY	NOTE 1	NOTE 2
1			

<b>Amphenol</b>	
TITLE	SMB P.C. MOUNT JACK
DRAWING NO.	KJ-SMB1251B1-3GT30G-50
ITEM NO.	

NO.	DESCRIPTION	MATERIAL	FINISH	Q'TY	DRAWING NO.	SCALE	6/1	ISSUE	A	FILE NO.
-----	-------------	----------	--------	------	-------------	-------	-----	-------	---	----------