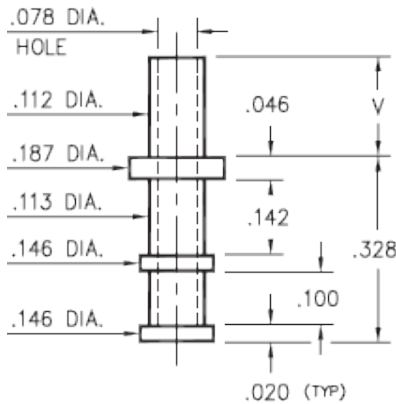


**Product Number: 2804-3-00-50-00-00-07-0**



- X -	Board Thickness	Length V
1	.031	.078
2	.062	.109
3	.094	.140
4	.125	.171

**Description:**

**2804** - Turret Terminal Pin

**Packaging:**

Packaged in Bulk

**2804-X-00-XX-00-00-07-0**

Swage mount in .118 hole

Mill-Max Part Number	Shell Plating	Contact Plating	RoHS Compliant
2804-3-00-50-00-00-07-0	300 - 500 µ" Electro-Solder (60/40 Tin/Lead)	00	NO

**SHELL MATERIAL:**

**BRASS ALLOY** (UNS C36000) per ASTM B 16

**Properties of BRASS ALLOY:**

- Chemical composition: Cu 61.5%, Zn 35.4%, Pb 3.1%†
- Hardness as machined: 80-90 Rockwell B
- Density: .307 lbs/in<sup>3</sup>
- Electrical conductivity: 26% IACS\*
- Melting point: 900°C/885°C (liquidus/solidus)

†(3 to 4% lead is used to permit "free machining" and is permitted by EC Directive 2002/95Annex 6; so all pin materials are RoHS compliant)

\*International Annealed Copper Standard, i.e. as a % of pure copper.