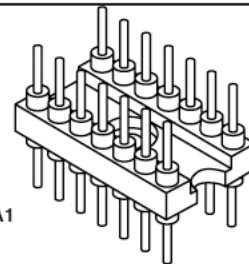




MOLD-TO-POSITION PRODUCT
Minimums or set-up charges may apply. Call Samtec.



AP-314-G-A1

SCREW MOUNT ADAPTOR PLUGS

Mates with:
IC, ICS, ICO,
ICA, ICE, ICH

Machined pin DIP adaptor plugs

DIP adaptor plugs are available in a wide variety of lead counts from 8 through 64 pins.

Samtec offers a choice of many terminal styles including solder, wire-wrap, solder pot, and others. Terminals can be gold or tin plated. AP & APS series adaptor plugs feature a UL rated G.F. polyester body with mounting holes.

Low cost stamped pin adaptor plugs and mating covers are also available from Samtec.

Specifications: AP & APS



Insulator Material: Black Glass Filled Polyester
Flammability Rating: UL 94V-0

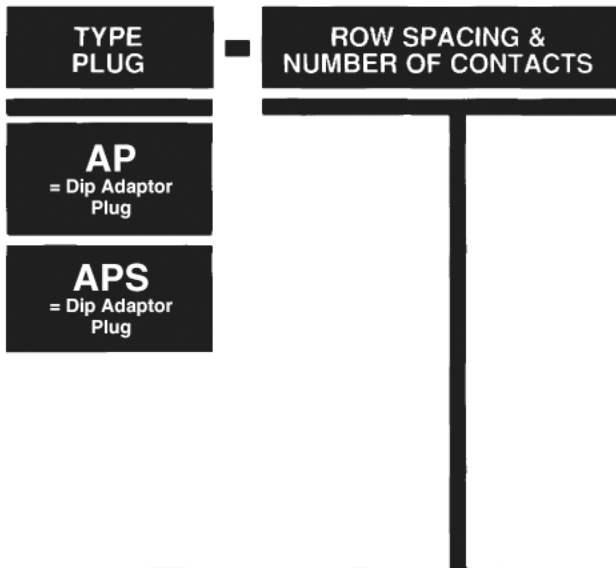
Insulation Resistance: 5000 megohm @ 500 VDC
Temperature Range: -55°C to +125°C

Withstanding Voltage: 1000 VRMS @ 60 Hz

Terminal Material: Brass except styles -M, -N, -P and -Q are Phosphor Bronze
Plating: Au over 50µ" Ni or Sn over 100µ" Cu or 50µ" Ni

Current Rating: 1 amp continuous @ 100 VDC per contact
Terminal Retention in Body: 5 lbs. against barb

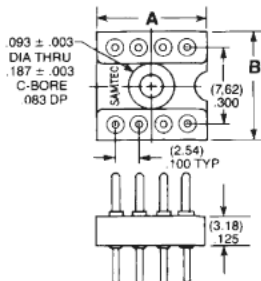
Note: Some sizes, styles and options are non-standard, non-returnable.



- 306 = .300 Row 06 Contacts
- 308 = .300 Row 08 Contacts
- 310 = .300 Row 10 Contacts

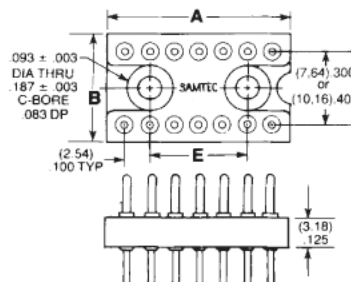
Part No.	A Length	B Width
AP or APS-306	(8.89) .350	(10.16) .400
AP or APS-308	(11.43) .450	(10.16) .400
*AP or *APS-310	(13.97) .550	(10.16) .400

* Mounting hole off center on 10 position.



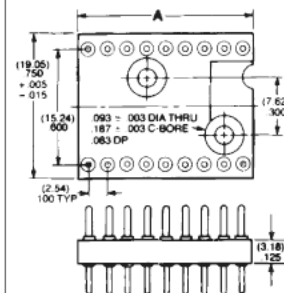
- 314 = .300 Row 14 Contacts
- 316 = .300 Row 16 Contacts
- 318 = .300 Row 18 Contacts
- 320 = .300 Row 20 Contacts
- 324 = .300 Row 24 Contacts
- 422 = .400 Row 22 Contacts
- 424 = .400 Row 24 Contacts

Part No.	A LENGTH	B WIDTH	E MNT HOLES
AP or APS-314	(17.78) .700	(10.16) .400	(10.16) .400
AP or APS-316	(20.32) .800	(10.16) .400	(12.70) .500
AP or APS-318	(22.86) .900	(10.16) .400	(15.24) .600
AP or APS-320	(25.40) 1.000	(10.16) .400	(17.78) .700
AP or APS-324	(30.48) 1.200	(10.16) .400	(22.86) .900
AP or APS-422	(27.94) 1.100	(10.16) .400	(20.32) .800
AP-424	(30.48) 1.200	(12.70) .500	(22.86) .900



- 610 = .600 Row 10 Contacts
- 614 = .600 Row 14 Contacts
- 616 = .600 Row 16 Contacts
- 618 = .600 Row 18 Contacts

Part No.	A Length
AP-610	(12.70) .500
AP-614	(17.78) .700
AP-616	(20.32) .800
AP-618	(22.86) .900

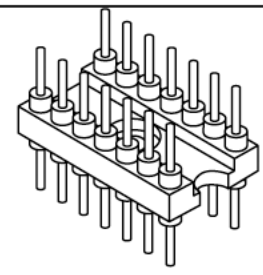


Due to technical progress, all designs, specifications and components are subject to change without notice.

WWW.SAMTEC.COM



MOLD-TO-POSITION PRODUCT
 Minimums or set-up charges may apply. Call Samtec.



AP-314-T-A

AP & APS SERIES

PLATING OPTION

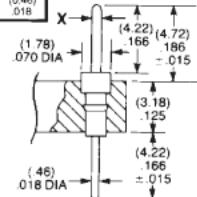
-G
 = 20µ" Gold

-T
 Tin

STYLE OPTION

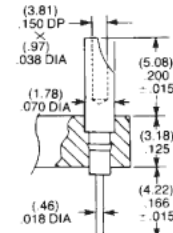
-A or -A1
 = Round Pin

STYLE	X DIA
-A	(0.64) 025
-A1	(0.46) 018



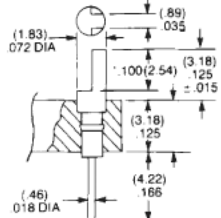
Style A Component No. = T-1R0-
 Style A1 Component No. = T-1R5-

-B
 = Solder Pot



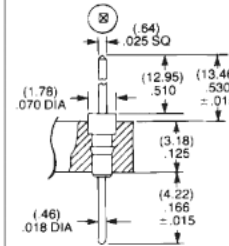
Component No. = T-1R1-

-C
 = Slotted Head



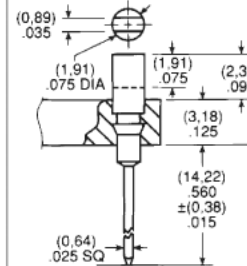
Component No. = T-1R2-

-D
 = Wire-Wrap



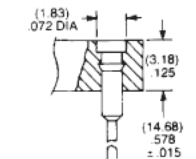
Component No. = T-1S4-1-1

-E
 = Slot-head W.W.
 (-648 N/A)



Component No. = T-1S5-

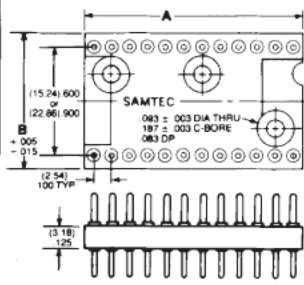
-F
 = Flat-head W.W.



Component No. = T-1S2-

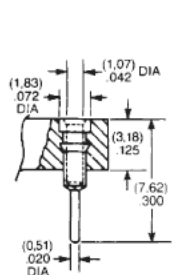
- 624 = .600 Row 24 Contacts
- 628 = .600 Row 28 Contacts
- 632 = .600 Row 32 Contacts
- 640 = .600 Row 40 Contacts
- 940 = .900 Row 40 Contacts
- 950 = .900 Row 50 Contacts
- 964 = .900 Row 64 Contacts

PART NO.	A LENGTH	B WIDTH
AP or APS-624	(30.48)1.200	(17.78).700
AP or APS-628	(35.56)1.400	(17.78).700
AP or APS-632	(40.64)1.600	(17.78).700
AP or APS-640	(50.80)2.000	(17.78).700
*AP-940		
*†AP-950	(63.50)2.500	(26.27)1.050
AP-964	(81.28)3.200	



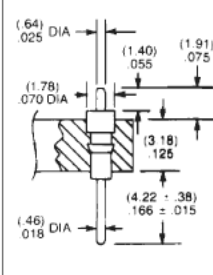
*AP-940 and AP-950 are non-standard non-returnable.
 † Mounting hole off center on 50 positions

-J
 = Solder Shell



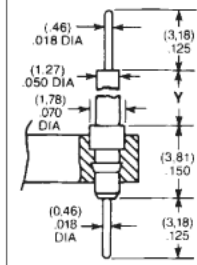
Component No. = S-1P1-

-K
 = Test Point



Component No. = T-1R15-

-M, -N, -P or -Q
 = Interconnect Post



Component No. = T-1R14-

STYLE	Y
-M	(1.52) 060
-N	(4.67) 185
-P	(11.05) 435
-Q	(17.40) 685

Due to technical progress, all designs, specifications and components are subject to change without notice.

WWW.SAMTEC.COM