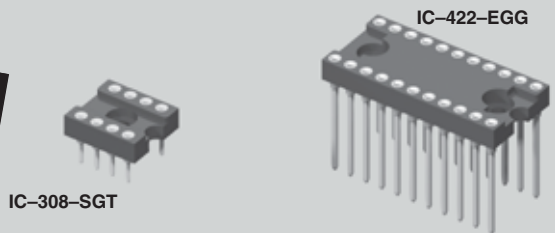




**MOLD-TO-POSITION PRODUCT**  
 Minimums or set-up charges may apply. Call Samtec.



# SCREW MOUNT DIP SOCKETS IC SERIES

Mates with:  
 AP, APS, APO,  
 APA, APH

## Highest reliability DIP sockets

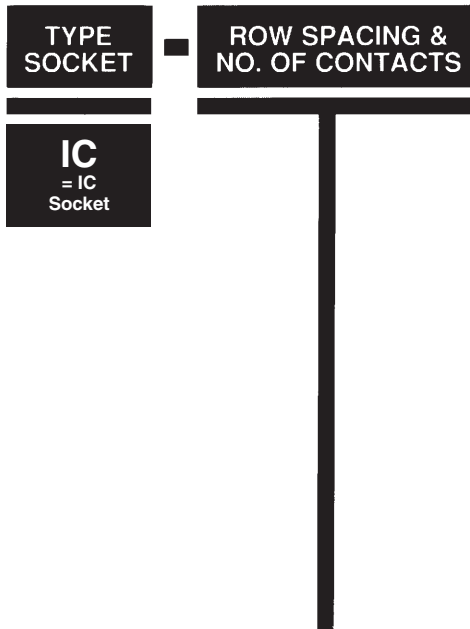
IC series DIP sockets feature U.L. rated G.F. polyester body with mounting holes and use precision machined lead sockets for high reliability in the most demanding applications.

### SPECIFICATIONS

**Insulator Material:** Black Glass Filled Polyester  
**Flammability Rating:** UL 94V-0  
**Insulation Resistance:** 5000 megohm @ 500 VDC  
**Temperature Range:** -55°C to +125°C  
**Withstanding Voltage:** 1000 VRMS@60 Hz  
**Contact:** BeCu  
**Shell:** Brass except style K  
 Phosphor Bronze  
**Plating:** Au over 50µ" Ni or Sn over 100µ" Cu or 50µ" Ni  
**Current Rating:** 1 amp continuous @ 100 VDC per contact  
**Contact Resistance:** 10 milliohms @ 200 milliamp  
**Socket Retention in Body:** 5 lbs against barb  
**Lead Size Range:** .015" to .022" DIA and most IC leads  
**Insertion Force:** Standard = 9 oz avg, 16 oz max (.017" DIA probe); Low Insertion Force = 2.5 oz avg, 5.5 oz max (.018" DIA probe)  
**Withdrawal Force:** Standard = 2.5 oz avg, 1.5 oz min (after 12 insertions with .017" DIA probe); Low Insertion Force = 2.0 oz avg, 0.35 oz min (after 12 insertions with .018" DIA probe)



**Note:**  
 Some sizes, styles and options are non-standard, non-returnable.



**-S\*, -A\*, or -J**  
 = Printed Circuit  
 \* For LIF Specify -ZS or -ZA

LEAD STYLE	X DIA	Y TAIL	Z
-S or -ZS	(0,51) .020	(3,18) .125	(7,62) .300
-A or -ZA	(0,51) .020	(4,57) .180	(8,89) .350
-J	(0,64) .025	(10,41) .410	(15,24) .600

Locking lead (-L) available. See OPTION.

Style S, ZS, A, ZA & J Insertion Depth = .095" to .150"  
 Style S Component Part No. = SC-1P1  
 Style ZS Component Part No. = EZ-1P1  
 Style A Component Part No. = SC-6P1  
 Style ZA Component Part No. = EZ-6P1  
 Style J Component Part No. = SC-1P3  
 Option L Insertion Depth = .095" to .150"  
 Option L Component Part No. = SC-1L1 or EZ-1L1

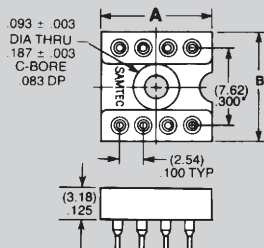
Low Insertion Force (LIF) Contacts Available.

- 306 = .300 Row / 6 Contacts
- 308 = .300 Row / 8 Contacts
- 310 = .300 Row / 10 Contacts

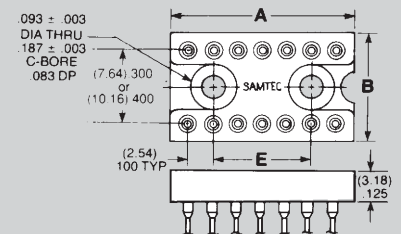
- 314 = .300 Row / 14 Contacts
- 316 = .300 Row / 16 Contacts
- 318 = .300 Row / 18 Contacts
- 320 = .300 Row / 20 Contacts
- 324 = .300 Row / 24 Contacts
- 422 = .400 Row / 22 Contacts
- 424 = .400 Row / 24 Contacts

Part No.	A Length	B Width
IC-306	(8,89) .350	(10,16) .400
IC-308	(11,43) .450	(10,16) .400
*IC-310	(13,97) .550	(10,16) .400

\* Mounting hole off center on 10 position.



Part No.	A Length	B Width	E Mnt Holes
IC-314	(17,78) .700	(10,16) .400	(10,16) .400
IC-316	(20,32) .800	(10,16) .400	(12,70) .500
IC-318	(22,86) .900	(10,16) .400	(15,24) .600
IC-320	(25,40) 1.000	(10,16) .400	(17,78) .700
IC-324	(30,48) 1.200	(10,16) .400	(22,86) .900
IC-422	(27,94) 1.100	(10,16) .400	(20,32) .800
IC-424	(30,48) 1.200	(12,70) .500	(22,86) .900



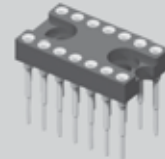
Due to technical progress, all designs, specifications and components are subject to change without notice.

[WWW.SAMTEC.COM](http://WWW.SAMTEC.COM)

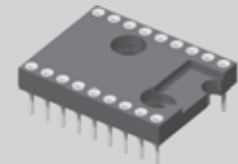
SAMTEC USA • Tel: 1-800-SAMTEC-9 or 812-944-6733 • Fax: 812-948-5047  
 SAMTEC GERMANY • Tel: +49 (0) 89 / 89460-0 • Fax: +49 (0) 89 / 89460-299  
 SAMTEC ASIA PACIFIC • Tel: 65 6745-5955 • Fax: 65 6841-1502  
 SAMTEC HONG KONG • Tel: 852-2600-4850 • Fax: 852-2600-4841  
 SAMTEC SILICON VALLEY • Tel: 408-395-5900 • Fax: 408-395-1520  
 SAMTEC FRANCE • Tel: 01 60 95 06 60 • Fax: 01 60 95 06 61  
 SAMTEC ISRAEL • Tel: 972-3-7526600 • Fax: 972-3-7526690  
 SAMTEC CHINA • Tel: 86-21-61103766 • Fax: 86-21-5423 4575  
 SAMTEC SOUTH AFRICA • Tel: 27 11 452 8112 • Fax: 27 86 6714432  
 SAMTEC UK • Tel: 01236 739292 • Fax: 01236 727113  
 SAMTEC ITALY • Tel: 39 039 6890337 • Fax: 39 039 6890315  
 SAMTEC INDIA • Tel: +91-80-3272 1612 • Fax: +91-80-4152 8187  
 SAMTEC TAIWAN • Tel: 886-2-2735-6109 • Fax: 886-2-2735-5036  
 SAMTEC ANZ • Tel: 613 9512 7747 • Fax: 613 9512 7745



**MOLD-TO-POSITION PRODUCT**  
 Minimums or set-up charges may apply. Call Samtec.

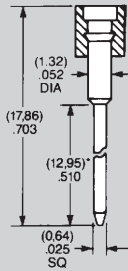


IC-314-WGT



IC-618-SGT

**-W**  
 = Wire-Wrap  
 For LIF Specify -ZW



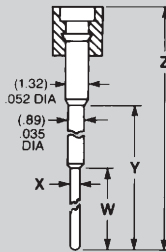
Shorter w/w tail lengths available. See OPTION.

Insertion Depth = .125" to .170"  
 Style W Component Part No. = SC-1W1(1)  
 Style ZW Component Part No. = EZ-1W1(1)  
 Style W-2 Component Part No. = SC-1W1(2)  
 Style ZW-2 Component Part No. = EZ-1W1(2)  
 Style W-3 Component Part No. = SC-1W1(3)  
 Style ZW-3 Component Part No. = EZ-1W1(3)

**-E**  
 = Elevated  
 For LIF Specify -ZE or -ZH

LEAD STYLE	X DIA	W TAIL	Y	Z
-E or -ZE	(0.51) .020	(4.32) .170	(8.86) .349	(13.77) .543
-ZH	(0.46) .018	(3.81) .150	(12.95) .510	(17.86) .703

Insertion Depth = .125" to .175"  
 Style E Component Part No. = SC-2P3  
 Style ZE Component Part No. = EZ-2P3  
 Style ZH Component Part No. = EZ-2P2



**PLATING OPTION**

**GG**  
 = 30µ" Gold Contact  
 10µ" Gold Shell

**GT**  
 = 30µ" Gold Contact  
 Tin Shell

**TT**  
 = Tin Contact and Shell  
 (-S, -ZS, -W, -ZW, -A, -H only)

**ST**  
 = 10µ" Gold Contact  
 Tin Shell  
 (-S & -ZS only)

**OPTION**  
 (Leave Blank for Standard Version)

**-2**  
 = (9.14) .360 Wire-Wrap Tail  
**Wire-Wrap Option**  
 Requires Style -W or -ZW

**-3**  
 = (6.60) .260 Wire-Wrap Tail  
 Specify desired suffix for shorter Wire-Wrap tail.

**-L**  
 = Locking Socket  
 Requires Style -S or -ZS and .035"±.003" board hole.  
 Requires GT plating option

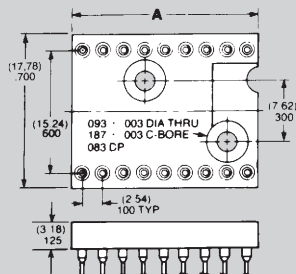
**-610** = .600 Row / 10 Contacts

**-614** = .600 Row / 14 Contacts

**-616** = .600 Row / 16 Contacts

**-618** = .600 Row / 18 Contacts

Part No.	A Length
IC-610	(12.70) .500
IC-614	(17.78) .700
IC-616	(20.32) .800
IC-618	(22.86) .900



**-624** = .600 Row / 24 Contacts

**-628** = .600 Row / 28 Contacts

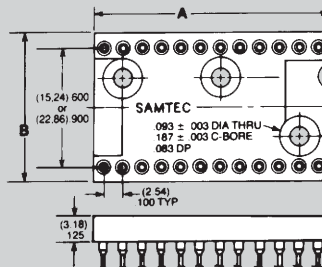
**-632** = .600 Row / 32 Contacts

**-640** = .600 Row / 40 Contacts

**-940** = .900 Row / 40 Contacts

**-950** = .900 Row / 50 Contacts

**-964** = .900 Row / 64 Contacts



Part No.	A Length	B Width
IC-624	(30.48) 1.200	(17.78) .700
IC-628	(35.56) 1.400	(17.78) .700
IC-632	(40.64) 1.600	(17.78) .700
IC-640	(50.80) 2.000	(17.78) .700
*IC-940		
†IC-950	(63.50) 2.500	(26.27) 1.050
IC-964	(81.28) 3.200	

\*IC-940 and IC-950 are non-standard non-returnable.

†Mounting hole off center on 50 positions

Due to technical progress, all designs, specifications and components are subject to change without notice.

**WWW.SAMTEC.COM**

SAMTEC USA • Tel: 1-800-SAMTEC-9 or 812-944-6733 • Fax: 812-948-5047

SAMTEC GERMANY • Tel: +49 (0) 89 / 89460-0 • Fax: +49 (0) 89 / 89460-299

SAMTEC NORDIC/BALTIC • Tel: +46-84477280 • Fax: +46-87420413

SAMTEC ASIA PACIFIC • Tel: 65 6745-5955 • Fax: 65 6841-1502

SAMTEC SILICON VALLEY • Tel: 408-395-5900 • Fax: 408-395-1520

SAMTEC FRANCE • Tel: 01 60 95 06 60 • Fax: 01 60 95 06 61

SAMTEC ISRAEL • Tel: 972-3-7526600 • Fax: 972-3-7526690

SAMTEC CHINA • Tel: 86-21-61103766 • Fax: 86-21-5423 4575

SAMTEC UK • Tel: 01236 739292 • Fax: 01236 727113

SAMTEC ITALY • Tel: 39 039 6890337 • Fax: 39 039 6890315

SAMTEC INDIA • Tel: +91-80-3272 1612 • Fax: +91-80-4152 8187

SAMTEC TAIWAN • Tel: 886-2-2735-6109 • Fax: 886-2-2735-5036

SAMTEC KOREA • Tel: 82-31-717-5685 • Fax: 82-31-717-5681

SAMTEC SOUTH AFRICA • Tel: 27 11 452 8112 • Fax: 27 86 6714432

SAMTEC ANZ • Tel: 613 9512 7747 • Fax: 613 9512 7745

SAMTEC HONG KONG • Tel: 852-2600 4850 • Fax: 852-2600 4842