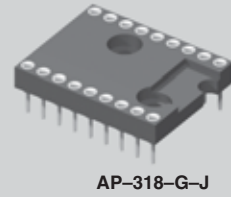
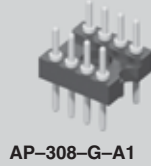




MOLD-TO-POSITION PRODUCT
 Minimums or set-up charges may apply. Call Samtec.



SCREW MOUNT ADAPTOR PLUGS

Mates with:
 IC, ICS, ICO,
 ICA, ICH

Machined pin DIP adaptor plugs

DIP adaptor plugs are available in a wide variety of lead counts from 8 through 64 pins.

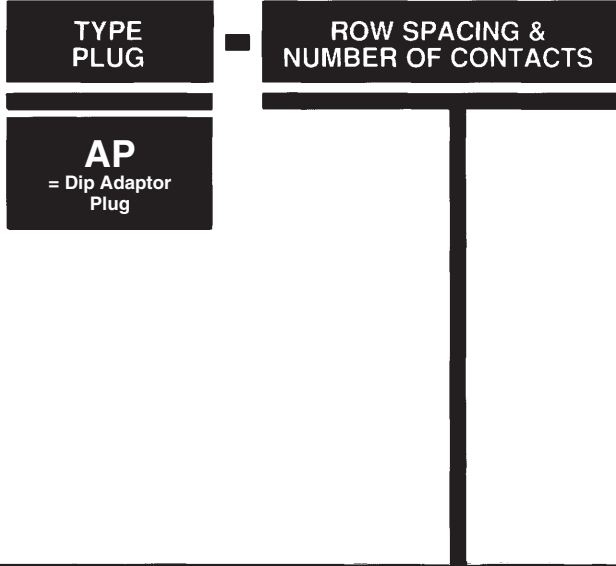
Samtec offers a choice of many terminal styles including solder, wire-wrap, solder pot, and others. Terminals can be gold or tin plated. AP series adaptor plugs feature a UL rated G.F. polyester body with mounting holes.

Low cost stamped pin adaptor plugs and mating covers are also available from Samtec.

Specifications: AP

Insulator Material: Black Glass Filled Polyester
Flammability Rating: UL 94V-O
Insulation Resistance: 5000 megohm @ 500 VDC
Temperature Range: -55°C to +125°C
Withstanding Voltage: 1000 VRMS @ 60 Hz
Terminal Material: Brass except styles -M, -N, -P and -Q are Phosphor Bronze
Plating: Au over 50µ" Ni or Sn over 100µ" Cu or 50µ" Ni
Current Rating: 1 amp continuous @ 100 VDC per contact
Terminal Retention in Body: 5 lbs. against barb

Note: Some sizes, styles and options are non-standard, non-returnable.



| | |
|-------------|------------------------|
| -306 | = .300 Row 06 Contacts |
| -308 | = .300 Row 08 Contacts |
| -310 | = .300 Row 10 Contacts |

| | |
|-------------|------------------------|
| -314 | = .300 Row 14 Contacts |
| -316 | = .300 Row 16 Contacts |
| -318 | = .300 Row 18 Contacts |
| -320 | = .300 Row 20 Contacts |
| -324 | = .300 Row 24 Contacts |
| -422 | = .400 Row 22 Contacts |
| -424 | = .400 Row 24 Contacts |

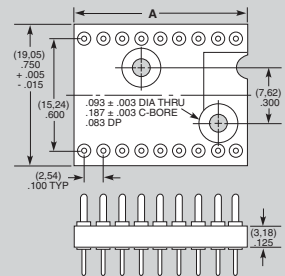
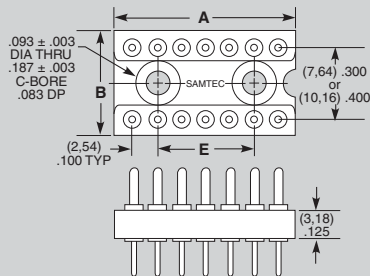
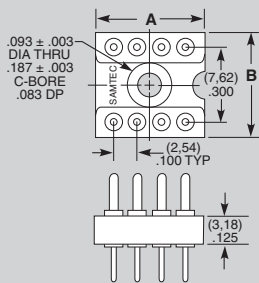
| | |
|-------------|------------------------|
| -610 | = .600 Row 10 Contacts |
| -614 | = .600 Row 14 Contacts |
| -616 | = .600 Row 16 Contacts |
| -618 | = .600 Row 18 Contacts |

| Part No. | A LENGTH | B WIDTH |
|----------|--------------|--------------|
| AP-306 | (8,89) .350 | (10,16) .400 |
| AP-308 | (11,43) .450 | (10,16) .400 |
| *AP-310 | (13,97) .550 | (10,16) .400 |

* Mounting hole off center on 10 position.

| Part No. | A LENGTH | B WIDTH | E MNT HOLES |
|----------|---------------|--------------|--------------|
| AP-314 | (17,78) .700 | (10,16) .400 | (10,16) .400 |
| AP-316 | (20,32) .800 | (10,16) .400 | (12,70) .500 |
| AP-318 | (22,86) .900 | (10,16) .400 | (15,24) .600 |
| AP-320 | (25,40) 1.000 | (10,16) .400 | (17,78) .700 |
| AP-324 | (30,48) 1.200 | (10,16) .400 | (22,86) .900 |
| AP-422 | (27,94) 1.100 | (10,16) .400 | (20,32) .800 |
| AP-424 | (30,48) 1.200 | (12,70) .500 | (22,86) .900 |

| Part No. | A LENGTH |
|----------|--------------|
| AP-610 | (12,70) .500 |
| AP-614 | (17,78) .700 |
| AP-616 | (20,32) .800 |
| AP-618 | (22,86) .900 |



Due to technical progress, all designs, specifications and components are subject to change without notice.

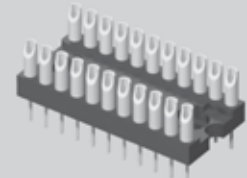
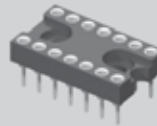
WWW.SAMTEC.COM

SAMTEC USA • Tel: 1-800-SAMTEC-9 or 812-944-6733 • Fax: 812-948-5047
 SAMTEC GERMANY • Tel: +49 (0) 89 / 89460-0 • Fax: +49 (0) 89 / 89460-299
 SAMTEC NORDIC/BALTIC • Tel: +46-84477280 • Fax: +46-87420413
 SAMTEC ASIA PACIFIC • Tel: 65 6745-5955 • Fax: 65 6841-1502
 SAMTEC HONG KONG • Tel: 852-2600-4850 • Fax: 852-2600-4842
 SAMTEC SINGAPORE • Tel: 65 6745-5955 • Fax: 65 6841-1502
 SAMTEC KOREA • Tel: 82-31-717-5685 • Fax: 82-31-717-5681
 SAMTEC SILICON VALLEY • Tel: 408-395-5900 • Fax: 408-395-1520
 SAMTEC FRANCE • Tel: 01 60 95 06 60 • Fax: 01 60 95 06 61
 SAMTEC ISRAEL • Tel: 972-3-7526600 • Fax: 972-3-7526690
 SAMTEC CHINA • Tel: 86-21-61103766 • Fax: 86-21-5423 4575
 SAMTEC SOUTH AFRICA • Tel: 27 11 452 8112 • Fax: 27 86 6714432
 SAMTEC UK • Tel: 01236 739292 • Fax: 01236 727113
 SAMTEC ITALY • Tel: 39 039 6890337 • Fax: 39 039 6890315
 SAMTEC INDIA • Tel: +91-80-3272 1612 • Fax: +91-80-4152 8187
 SAMTEC TAIWAN • Tel: 886-2-2735-6109 • Fax: 886-2-2735-5036
 SAMTEC ANZ • Tel: 613 9512 7747 • Fax: 613 9512 7745



MOLD-TO-POSITION PRODUCT
 Minimums or set-up charges may apply. Call Samtec.

AP-614-T-J



AP-422-T-B

AP SERIES

PLATING OPTION

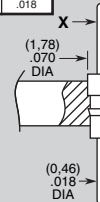
-G
 = 20µ" Gold

-T
 = Tin

STYLE OPTION

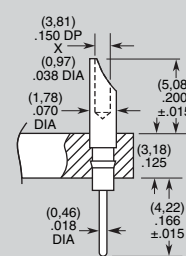
-A or -A1
 = Round Pin

| STYLE | X DIA |
|-------|----------------|
| -A | (0.64) .025 |
| -A1 | (0.46) .018 |



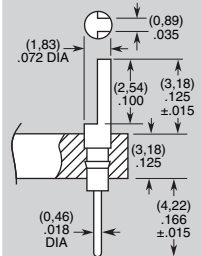
Style A Component No. = T-1R0-
 Style A1 Component No. = T-1R5-

-B
 = Solder Pot



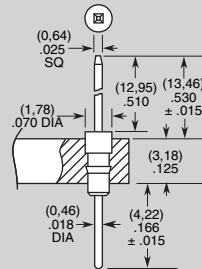
Component No. = T-1R1-

-C
 = Slotted Head



Component No. = T-1R2-

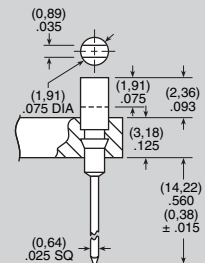
-D
 = Wire-Wrap



Component No. = T-1S4-1-1

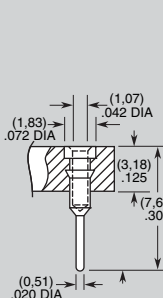
-E
 = Slot-head W.W.

(-648 N/A)



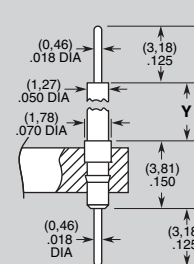
Component No. = T-1S5-

-J
 = Solder Shell



Component No. = S-1P1-

-M, -N or -P
 = Interconnect Post



Component No. = T-1R14-

| STYLE | Y |
|-------|-----------------|
| M | (1.52) .060 |
| N | (4.67) .185 |
| P | (11.05) .435 |

-624 = .600 Row 24 Contacts

-628 = .600 Row 28 Contacts

-632 = .600 Row 32 Contacts

-640 = .600 Row 40 Contacts

-940 = .900 Row 40 Contacts

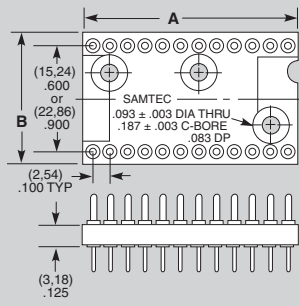
-950 = .900 Row 50 Contacts

-964 = .900 Row 64 Contacts

| Part No. | A LENGTH | B WIDTH |
|----------|---------------|---------------|
| AP-624 | (30,48) 1.200 | (17,78) .700 |
| AP-628 | (35,56) 1.400 | (17,78) .700 |
| AP-632 | (40,64) 1.600 | (17,78) .700 |
| *AP-640 | (50,80) 2.000 | (17,78) .700 |
| *AP-940 | (63,50) 2.500 | (26,27) 1.050 |
| *†AP-950 | (63,50) 2.500 | |
| AP-964 | (81,28) 3.200 | |

* AP-940 and AP-950 are non-standard non-returnable

† Mounting hole off center on 50 positions



Due to technical progress, all designs, specifications and components are subject to change without notice.

WWW.SAMTEC.COM

SAMTEC USA • Tel: 1-800-SAMTEC-9 or 812-944-6733 • Fax: 812-948-5047

SAMTEC GERMANY • Tel: +49 (0) 89 / 89460-0 • Fax: +49 (0) 89 / 89460-299

SAMTEC NORDIC/BALTIC • Tel: +46-84477280 • Fax: +46-87420413

SAMTEC ASIA PACIFIC • Tel: 65 6745-5955 • Fax: 65 6841-1502

SAMTEC SILICON VALLEY • Tel: 408-395-5900 • Fax: 408-395-1520

SAMTEC FRANCE • Tel: 01 60 95 06 60 • Fax: 01 60 95 06 61

SAMTEC ISRAEL • Tel: 972-3-7526600 • Fax: 972-3-7526690

SAMTEC CHINA • Tel: 86-21-61103766 • Fax: 86-21-5423 4575

SAMTEC UK • Tel: 01236 739292 • Fax: 01236 727113

SAMTEC ITALY • Tel: 39 039 6890337 • Fax: 39 039 6890315

SAMTEC INDIA • Tel: +91-80-3272 1612 • Fax: +91-80-4152 8187

SAMTEC TAIWAN • Tel: 886-2-2735-6109 • Fax: 886-2-2735-5036

SAMTEC SOUTH AFRICA • Tel: 27 11 452 8112 • Fax: 27 86 6714432

SAMTEC ANZ • Tel: 613 9512 7747 • Fax: 613 9512 7745

SAMTEC KOREA • Tel: 82-31-717-5685 • Fax: 82-31-717-5681

SAMTEC HONG KONG • Tel: 852-2600-4850 • Fax: 852-2600-4842