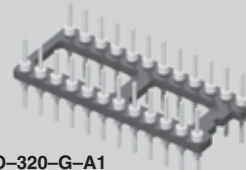




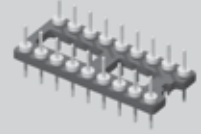
**MOLD-TO-POSITION PRODUCT**

Minimums or set-up charges may apply. Call Samtec.

APO-320-G-A1



APO-314-T-A



# LOW PROFILE ADAPTORS APO SERIES

Mates with:  
ICO, ICA, CIC

## SPECIFICATIONS

For complete specifications see [www.samtec.com/APO](http://www.samtec.com/APO)

**Insulator Material:**  
Black Glass Filled Polyester  
**Flammability Rating:**  
UL 94V-0  
**Insulation Resistance:**  
5000 megohm @ 500 VDC  
**Operating Temp Range:**  
-55°C to +125°C  
**Withstanding Voltage:**  
1000 VRMS @ 60 Hz  
**Terminal Material:**  
Brass  
**Plating:**  
Au over 50µ" (1,27µm) Ni or Sn over 100µ" (2,54µm) Cu or 50µ" Ni  
**Current Rating:**  
1 A



## APO

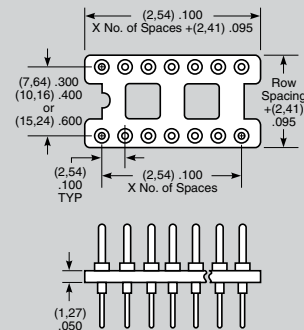
## ROW SPACING & NO. OF CONTACTS

## PLATING OPTION

## LEAD STYLE

Specify from chart below

- Side & end stackable
- Open body design

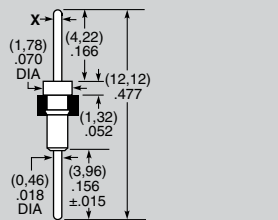


	Row Space	No. of Contacts
-308	.300 (7,62)	08
-314		14
-316		16
-318		18
-320		20
-324	.400 (10,16)	24
-422	.600 (15,24)	22
-624		24
-628		28
-640		40

**-G**  
= 20µ"  
(0,58µm) Gold

**-T**  
= Tin

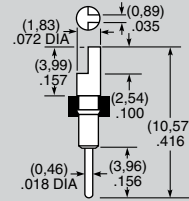
## -A or -A1 = Round Pin



STYLE	X DIA
-A	(0,64) .025
-A1	(0,46) .018

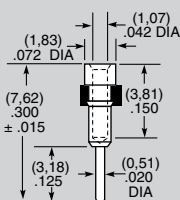
Component No. = T-1R0-  
Component No. = T-1R5-

## -C = Slotted Head



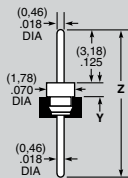
Component No. = T-1R2-

## -J = Solder Shell



Component No. = S-1P1-

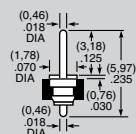
## -R or -H = Low Profile



STYLE	Z	Y
-R	(8,43) .332	(8,89) .355
-H	(7,62) .300	(0,51) .020

Style R Component No. = T-2R6-  
Style H Component No. = T-1R6-

## -T = Short Tail



Component No. = T-3R6-

**Note:**  
Some sizes, styles and options are non-standard, non-returnable.

Due to technical progress, all designs, specifications and components are subject to change without notice.

[WWW.SAMTEC.COM](http://WWW.SAMTEC.COM)

SAMTEC USA • Tel: 1-800-SAMTEC-9 or 812-944-6733 • Fax: 812-948-5047

SAMTEC GERMANY • Tel: +49 (0) 89/89460-0 • Fax: +49 (0) 89/89460-299

SAMTEC NORDIC/BALTIC • Tel: +46-84477280 • Fax: +46-87420413

SAMTEC ASIA PACIFIC • Tel: 65 6745-5955 • Fax: 65 6841-1502

SAMTEC HONG KONG • Tel: 852-2800-4850 • Fax: 852-2800-4841

SAMTEC JAPAN • Tel: 045-475-1385 • Fax: 045-475-1340

SAMTEC KOREA • Tel: 82-31-717-5685 • Fax: 82-31-717-5681

SAMTEC SOUTH AFRICA • Tel: 27 11 452 8112 • Fax: 27 86 6714432

SAMTEC CHINA • Tel: 86-21-61103766 • Fax: 86-21-5423 4575

SAMTEC INDIA • Tel: +91-80-3272 1612 • Fax: +91-80-4152 8187

SAMTEC SILICON VALLEY • Tel: 408-395-5900 • Fax: 408-395-1520

SAMTEC FRANCE • Tel: 01 60 95 06 60 • Fax: 01 60 95 06 61

SAMTEC ITALY • Tel: 39 039 6890337 • Fax: 39 039 6890315

SAMTEC TAIWAN • Tel: 886-2-2735-6109 • Fax: 886-2-2735-5036

SAMTEC ANZ • Tel: 613 9512 7747 • Fax: 613 9512 7745

SAMTEC UK • Tel: 01236 739292 • Fax: 01236 727113

SAMTEC ITALY • Tel: 39 039 6890337 • Fax: 39 039 6890315

SAMTEC INDIA • Tel: +91-80-3272 1612 • Fax: +91-80-4152 8187

SAMTEC TAIWAN • Tel: 886-2-2735-6109 • Fax: 886-2-2735-5036

SAMTEC ANZ • Tel: 613 9512 7747 • Fax: 613 9512 7745

SAMTEC UK • Tel: 01236 739292 • Fax: 01236 727113

SAMTEC ITALY • Tel: 39 039 6890337 • Fax: 39 039 6890315

SAMTEC INDIA • Tel: +91-80-3272 1612 • Fax: +91-80-4152 8187

SAMTEC TAIWAN • Tel: 886-2-2735-6109 • Fax: 886-2-2735-5036

SAMTEC ANZ • Tel: 613 9512 7747 • Fax: 613 9512 7745

SAMTEC UK • Tel: 01236 739292 • Fax: 01236 727113

SAMTEC ITALY • Tel: 39 039 6890337 • Fax: 39 039 6890315

SAMTEC INDIA • Tel: +91-80-3272 1612 • Fax: +91-80-4152 8187

SAMTEC TAIWAN • Tel: 886-2-2735-6109 • Fax: 886-2-2735-5036

SAMTEC ANZ • Tel: 613 9512 7747 • Fax: 613 9512 7745

SAMTEC UK • Tel: 01236 739292 • Fax: 01236 727113

SAMTEC ITALY • Tel: 39 039 6890337 • Fax: 39 039 6890315

SAMTEC INDIA • Tel: +91-80-3272 1612 • Fax: +91-80-4152 8187

SAMTEC TAIWAN • Tel: 886-2-2735-6109 • Fax: 886-2-2735-5036

SAMTEC ANZ • Tel: 613 9512 7747 • Fax: 613 9512 7745