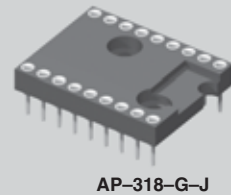
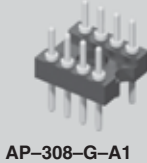




MOLD-TO-POSITION PRODUCT
 Minimums or set-up charges may apply. Call Samtec.



SCREW MOUNT ADAPTOR PLUGS

Mates with:
 IC, ICS, ICO,
 ICA, ICH

Machined pin DIP adaptor plugs

DIP adaptor plugs are available in a wide variety of lead counts from 8 through 64 pins.

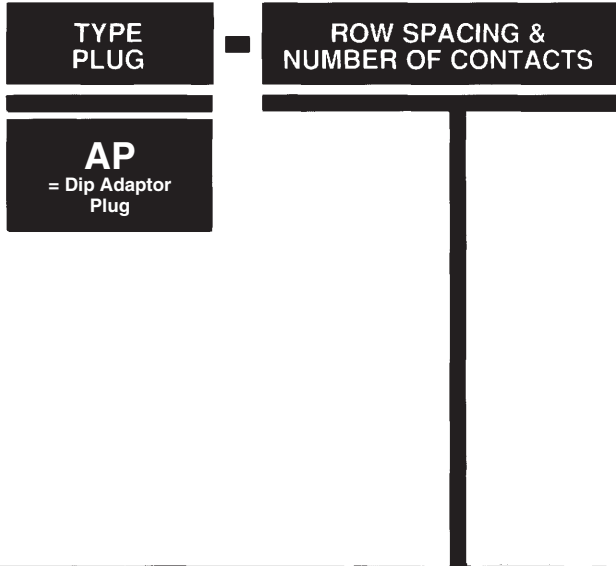
Samtec offers a choice of many terminal styles including solder, wire-wrap, solder pot, and others. Terminals can be gold or tin plated. AP series adaptor plugs feature a UL rated G.F. polyester body with mounting holes.

Low cost stamped pin adaptor plugs and mating covers are also available from Samtec.

Specifications: AP

Insulator Material: Black Glass Filled Polyester
Flammability Rating: UL 94V-O
Insulation Resistance: 5000 megohm @ 500 VDC
Temperature Range: -55°C to +125°C
Withstanding Voltage: 1000 VRMS @ 60 Hz
Terminal Material: Brass except styles -M, -N, -P and -Q are Phosphor Bronze
Plating: Au over 50µ" Ni or Sn over 100µ" Cu or 50µ" Ni
Current Rating: 1 amp continuous @ 100 VDC per contact
Terminal Retention in Body: 5 lbs. against barb

Note: Some sizes, styles and options are non-standard, non-returnable.



- 306 = .300 Row 06 Contacts
- 308 = .300 Row 08 Contacts
- 310 = .300 Row 10 Contacts

- 314 = .300 Row 14 Contacts
- 316 = .300 Row 16 Contacts
- 318 = .300 Row 18 Contacts
- 320 = .300 Row 20 Contacts
- 324 = .300 Row 24 Contacts
- 422 = .400 Row 22 Contacts
- 424 = .400 Row 24 Contacts

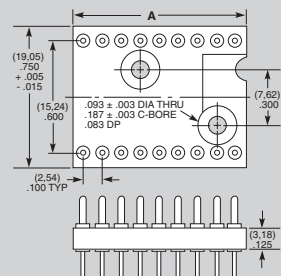
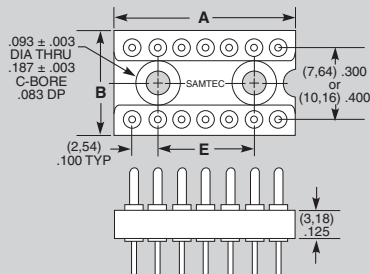
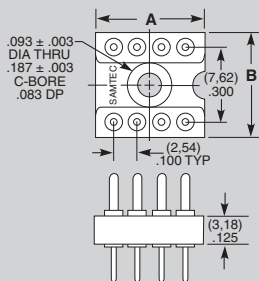
- 610 = .600 Row 10 Contacts
- 614 = .600 Row 14 Contacts
- 616 = .600 Row 16 Contacts
- 618 = .600 Row 18 Contacts

Part No.	A LENGTH	B WIDTH
AP-306	(8,89) .350	(10,16) .400
AP-308	(11,43) .450	(10,16) .400
*AP-310	(13,97) .550	(10,16) .400

* Mounting hole off center on 10 position.

Part No.	A LENGTH	B WIDTH	E MNT HOLES
AP-314	(17,78) .700	(10,16) .400	(10,16) .400
AP-316	(20,32) .800	(10,16) .400	(12,70) .500
AP-318	(22,86) .900	(10,16) .400	(15,24) .600
AP-320	(25,40) 1.000	(10,16) .400	(17,78) .700
AP-324	(30,48) 1.200	(10,16) .400	(22,86) .900
AP-422	(27,94) 1.100	(10,16) .400	(20,32) .800
AP-424	(30,48) 1.200	(12,70) .500	(22,86) .900

Part No.	A LENGTH
AP-610	(12,70) .500
AP-614	(17,78) .700
AP-616	(20,32) .800
AP-618	(22,86) .900



Due to technical progress, all designs, specifications and components are subject to change without notice.

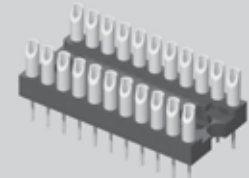
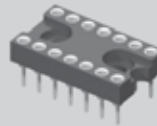
WWW.SAMTEC.COM

SAMTEC USA • Tel: 1-800-SAMTEC-9 or 812-944-6733 • Fax: 812-948-5047
 SAMTEC GERMANY • Tel: +49 (0) 89 / 89460-0 • Fax: +49 (0) 89 / 89460-299
 SAMTEC NORDIC/BALTIC • Tel: +46-84477280 • Fax: +46-87420413
 SAMTEC ASIA PACIFIC • Tel: 65 6745-5955 • Fax: 65 6841-1502
 SAMTEC HONG KONG • Tel: 852-2600-4850 • Fax: 852-2600-4842
 SAMTEC SINGAPORE • Tel: 65 6745-5955 • Fax: 65 6841-1502
 SAMTEC KOREA • Tel: 82-31-717-5685 • Fax: 82-31-717-5681
 SAMTEC SILICON VALLEY • Tel: 408-395-5900 • Fax: 408-395-1520
 SAMTEC FRANCE • Tel: 01 60 95 06 60 • Fax: 01 60 95 06 61
 SAMTEC ISRAEL • Tel: 972-3-7526600 • Fax: 972-3-7526690
 SAMTEC CHINA • Tel: 86-21-61103766 • Fax: 86-21-5423 4575
 SAMTEC SOUTH AFRICA • Tel: 27 11 452 8112 • Fax: 27 86 6714432
 SAMTEC UK • Tel: 01236 739292 • Fax: 01236 727113
 SAMTEC ITALY • Tel: 39 039 6890337 • Fax: 39 039 6890315
 SAMTEC INDIA • Tel: +91-80-3272 1612 • Fax: +91-80-4152 8187
 SAMTEC TAIWAN • Tel: 886-2-2735-6109 • Fax: 886-2-2735-5036
 SAMTEC ANZ • Tel: 613 9512 7747 • Fax: 613 9512 7745



MOLD-TO-POSITION PRODUCT
 Minimums or set-up charges may apply. Call Samtec.

AP-614-T-J



AP-422-T-B

AP SERIES

PLATING OPTION

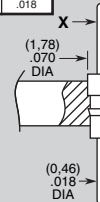
-G
 = 20µ" Gold

-T
 = Tin

STYLE OPTION

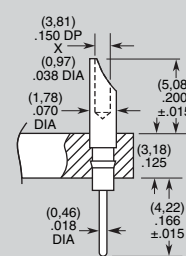
-A or -A1
 = Round Pin

STYLE	X DIA
-A	(0.64) .025
-A1	(0.46) .018



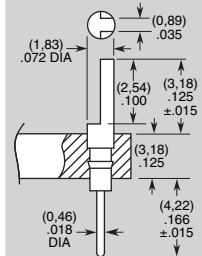
Style A Component No. = T-1R0-
 Style A1 Component No. = T-1R5-

-B
 = Solder Pot



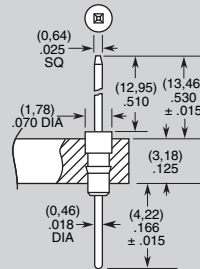
Component No. = T-1R1-

-C
 = Slotted Head



Component No. = T-1R2-

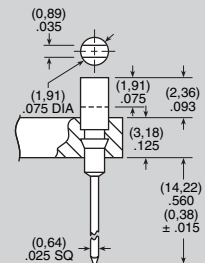
-D
 = Wire-Wrap



Component No. = T-1S4-1-1

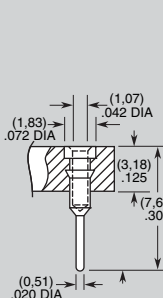
-E
 = Slot-head W.W.

(-648 N/A)



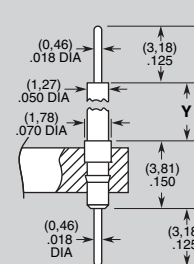
Component No. = T-1S5-

-J
 = Solder Shell



Component No. = S-1P1-

-M, -N or -P
 = Interconnect Post

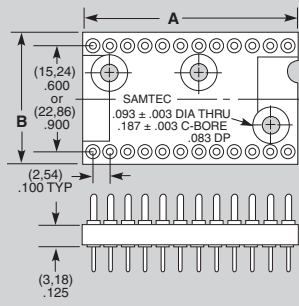


Component No. = T-1R14-

STYLE	Y
M	(1.52) .060
N	(4.67) .185
P	(11.05) .435

- 624** = .600 Row 24 Contacts
- 628** = .600 Row 28 Contacts
- 632** = .600 Row 32 Contacts
- 640** = .600 Row 40 Contacts
- 940** = .900 Row 40 Contacts
- 950** = .900 Row 50 Contacts
- 964** = .900 Row 64 Contacts

Part No.	A LENGTH	B WIDTH
AP-624	(30.48) 1.200	(17.78) .700
AP-628	(35.56) 1.400	(17.78) .700
AP-632	(40.64) 1.600	(17.78) .700
*AP-640	(50.80) 2.000	(17.78) .700
*AP-940	(63.50) 2.500	(26.27) 1.050
*AP-950	(63.50) 2.500	(26.27) 1.050
AP-964	(81.28) 3.200	(26.27) 1.050



* AP-940 and AP-950 are non-standard non-returnable

† Mounting hole off center on 50 positions

Due to technical progress, all designs, specifications and components are subject to change without notice.

WWW.SAMTEC.COM

SAMTEC USA • Tel: 1-800-SAMTEC-9 or 812-944-6733 • Fax: 812-948-5047
 SAMTEC GERMANY • Tel: +49 (0) 89 / 89460-0 • Fax: +49 (0) 89 / 89460-299
 SAMTEC NORDIC/BALTIC • Tel: +46-84477280 • Fax: +46-87420413
 SAMTEC ASIA PACIFIC • Tel: 65 6745-5955 • Fax: 65 6841-1502
 SAMTEC HONG KONG • Tel: 852-2600-4850 • Fax: 852-2600-4842
 SAMTEC JAPAN • Tel: 045-475-1385 • Fax: 045-475-1340
 SAMTEC KOREA • Tel: 82-31-717-5685 • Fax: 82-31-717-5681
 SAMTEC SILICON VALLEY • Tel: 408-395-5900 • Fax: 408-395-1520
 SAMTEC FRANCE • Tel: 01 60 95 06 60 • Fax: 01 60 95 06 61
 SAMTEC ISRAEL • Tel: 972-3-7526600 • Fax: 972-3-7526690
 SAMTEC CHINA • Tel: 86-21-61103766 • Fax: 86-21-5423 4575
 SAMTEC SOUTH AFRICA • Tel: 27 11 452 8112 • Fax: 27 86 6714432
 SAMTEC UK • Tel: 01236 739292 • Fax: 01236 727113
 SAMTEC ITALY • Tel: 39 039 6890337 • Fax: 39 039 6890315
 SAMTEC INDIA • Tel: +91-80-3272 1612 • Fax: +91-80-4152 8187
 SAMTEC TAIWAN • Tel: 886-2-2735-6109 • Fax: 886-2-2735-5036
 SAMTEC ANZ • Tel: 613 9512 7747 • Fax: 613 9512 7745