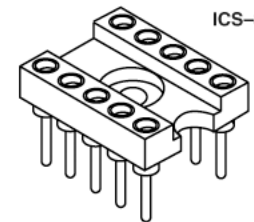
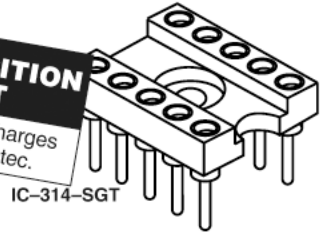




MOLD-TO-POSITION PRODUCT
Minimums or set-up charges may apply. Call Samtec.



ICS-310-SGT

IC-314-SGT

SCREW MOUNT DIP SOCKETS IC & ICS SERIES

Mates with:
AP, APS, APO,
APA, APE, APH

Highest reliability DIP sockets

IC and ICS series DIP sockets feature U.L. rated G.F. polyester body with mounting holes and use precision machined lead sockets for high reliability in the most demanding applications.

Specifications:

IC & ICS

Insulator Material: Black Glass Filled Polyester



Flammability Rating: UL 94V-0

Insulation Resistance: 5000 megohm @ 500 VDC

Temperature Range: -55°C to +125°C

Withstanding Voltage: 1000 VRMS @ 60 Hz

Contact: BeCu

Shell: Brass except style K Phosphor Bronze

Plating: Au over 50µ" Ni or Sn over 100µ" Cu or 50µ" Ni

Current Rating: 1 amp continuous @ 100 VDC per contact

Contact Resistance: 10 milliohms @ 200 milliamperes

Socket Retention in Body: 5 lbs against barb

Lead Size Range: .015" to .022" DIA and most IC leads

Insertion Force: Standard = 9 oz avg, 16 oz max (.017" DIA probe); Low Insertion Force = 2.5 oz avg, 5.5 oz max (.018" DIA probe)

Withdrawal Force: Standard = 2.5 oz avg, 1.5 oz min (after 12 insertions with .017" DIA probe); Low Insertion Force = 2.0 oz avg, 0.35 oz min (after 12 insertions with .018" DIA probe)

Note:
Some sizes, styles and options are non-standard, non-returnable.

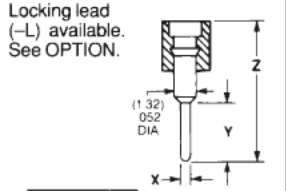
TYPE SOCKET - ROW SPACING & NO. OF CONTACTS

IC
= IC Socket

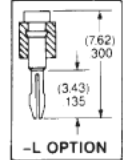
ICS
= ICS Socket

-S*, -A*, -J, or -K
= Printed Circuit
*For LIF Specify -ZS or -ZA

| LEAD STYLE | X DIA | Y TAIL | Z |
|------------|----------------|----------------|----------------|
| -S or -ZS | (0.51) .020 | (3.18) .125 | (7.62) 300 |
| -A or -ZA | (0.51) .020 | (4.57) .180 | (8.89) 350 |
| -J | (0.64) .025 | (10.41) 410 | (15.24) 600 |
| -K | (0.89) .035 | (12.95) 510 | (17.86) 703 |



Style S, ZS, A, ZA & J Insertion Depth = .095" to .150"
Style S Component Part No. = SC-1P1
Style ZS Component Part No. = EZ-1P1
Style A Component Part No. = SC-6P1
Style ZA Component Part No. = EZ-6P1
Style J Component Part No. = SC-1P3
Option L Insertion Depth = .095" to .150"
Option L Component Part No. = SC-1L1 or EZ-1L1
Style K Insertion Depth = .125" to .170"
Style K Component Part No. = SC-2P1

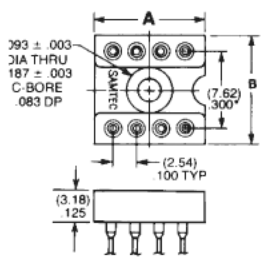


Low Insertion Force (LIF) Contacts Available.

- 306 = .300 Row 6Contacts
- 308 = .300 Row 8 Contacts
- 310 = .300 Row 10 Contacts

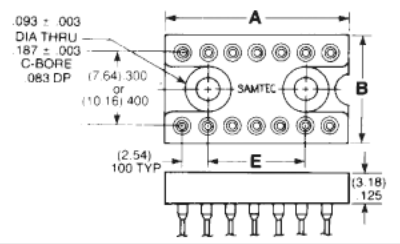
| Part No. | A Length | B Width |
|---------------|--------------|--------------|
| IC or ICS-306 | (8.89) .350 | (10.16) .400 |
| IC or ICS-308 | (11.43) .450 | (10.16) .400 |
| IC or ICS-310 | (13.97) .550 | (10.16) .400 |

* Mounting hole off center on 10 position.



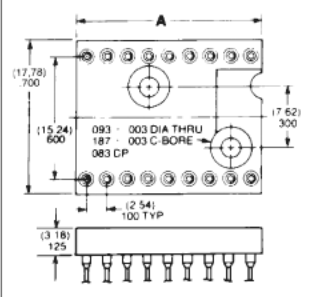
- 314 = .300 Row 14 Contacts
- 316 = .300 Row 16 Contacts
- 318 = .300 Row 18 Contacts
- 320 = .300 Row 20 Contacts
- 324 = .300 Row 24 Contacts
- 422 = .400 Row 22 Contacts
- 424 = .400 Row 24 Contacts

| Part No. | A Length | B Width | E Mnt Holes |
|---------------|---------------|--------------|--------------|
| IC or ICS-314 | (17.78) .700 | (10.16) .400 | (10.16) .400 |
| IC or ICS-316 | (20.32) .800 | (10.16) .400 | (12.70) .500 |
| IC or ICS-318 | (22.86) .900 | (10.16) .400 | (15.24) .600 |
| IC or ICS-320 | (25.40) 1.000 | (10.16) .400 | (17.78) .700 |
| IC or ICS-324 | (30.48) 1.200 | (10.16) .400 | (22.86) .900 |
| IC or ICS-422 | (27.94) 1.100 | (10.16) .400 | (20.32) .800 |
| IC-424 | (30.48) 1.200 | (12.70) .500 | (22.86) .900 |



- 610 = .600 Row 10 Contacts
- 614 = .600 Row 14 Contacts
- 616 = .600 Row 16 Contacts
- 618 = .600 Row 18 Contacts

| Part No. | A Length |
|----------|--------------|
| IC-610 | (12.70) .500 |
| IC-614 | (17.78) .700 |
| IC-616 | (20.32) .800 |
| IC-618 | (22.86) .900 |



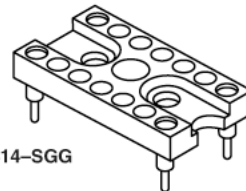
Due to technical progress, all designs, specifications and components are subject to change without notice.

WWW.SAMTEC.COM

SAMTEC USA • Tel: 1-800-SAMTEC-9 or 812-944-6733 • Fax: 812-948-5047
 SAMTEC GERMANY • Tel: +49 (0) 89 / 89460-0 • Fax: +49 (0) 89 / 89460-299
 SAMTEC JAPAN • Tel: 045-475-1385 • Fax: 045-475-1340
 SAMTEC CHINA • Tel: 86-21-61103766 • Fax: 86-21-53854047
 SAMTEC INDIA • Tel: +91-80-3272 1612 • Fax: +91-80-4152 8187
 SAMTEC TAIWAN • Tel: 886 02 2698-3367 • Fax: 886 02 8698-2159
 SAMTEC SOUTH AFRICA • Tel: 27 11 4528112 • Fax: 27 86 6714432
 SAMTEC ANZ • Tel: 613 9512 7747 • Fax: 613 9512 7745



MOLD-TO-POSITION PRODUCT
 Minimums or set-up charges may apply. Call Samtec.



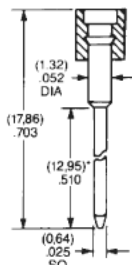
CO-314-SGG

LEAD STYLE

PLATING OPTION

OPTION
 (Leave Blank for Standard Version)

-W
 = Wire-Wrap
 For LIF Specify -ZW



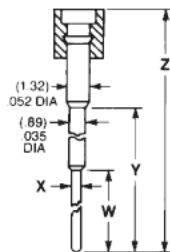
Shorter w/w tail lengths available. See OPTION.

Insertion Depth = .125" to .170"
 Style W Component Part No. = SC-1W1(1)
 Style ZW Component Part No. = EZ-1W1(1)
 Style W-2 Component Part No. = SC-1W1(2)
 Style ZW-2 Component Part No. = EZ-1W1(2)
 Style W-3 Component Part No. = SC-1W1(3)
 Style ZW-3 Component Part No. = EZ-1W1(3)

-E or -H
 = Elevated
 For LIF Specify -ZE or -ZH

| LEAD STYLE | X DIA | W TAIL | Y | Z |
|------------|-------------|-------------|--------------|--------------|
| -E or -ZE | (0.51) .020 | (4.32) .170 | (8.86) .349 | (13.77) .543 |
| -H or -ZH | (0.46) .018 | (3.81) .150 | (12.95) .510 | (17.86) .703 |

Insertion Depth = .125" to .175"
 Style E Component Part No. = SC-2P3
 Style ZE Component Part No. = EZ-2P3
 Style H Component Part No. = SC-2P2
 Style ZH Component Part No. = EZ-2P2



GG
 = 30µ" Gold Contact
 10µ" Gold Shell

GT
 = 30µ" Gold Contact
 Tin Shell

TT
 = Tin Contact and Shell
 (-S, -ZS, -W, -ZW, -A, -H only)

ST
 = 10µ" Gold Contact
 Tin Shell
 (-S & -ZS only)

-2
 = (9.14) .360
 Wire-Wrap Tail

Wire-Wrap Option
 Requires Style -W or -ZW

-3
 = (6.60) .260
 Wire-Wrap Tail

Specify desired suffix for shorter Wire-Wrap tail.

-L
 = Locking Socket

Requires Style -S or -ZS and .035"±.003" board hole.



-624 = .600 Row / 24 Contacts

-628 = .600 Row / 28 Contacts

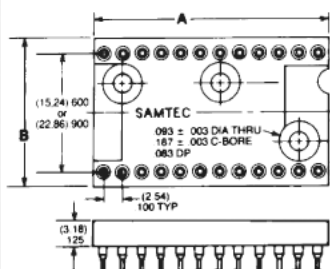
-632 = .600 Row / 32 Contacts

-640 = .600 Row / 40 Contacts

-940 = .900 Row / 40 Contacts

-950 = .900 Row / 50 Contacts

-964 = .900 Row / 64 Contacts



| Part No. | A Length | B Width |
|---------------|---------------|---------------|
| IC or ICS-624 | (30.48) 1.200 | (17.78) .700 |
| IC or ICS-628 | (35.56) 1.400 | (17.78) .700 |
| IC or ICS-632 | (40.64) 1.600 | (17.78) .700 |
| IC or ICS-640 | (50.80) 2.000 | (17.78) .700 |
| *IC-940 | (63.50) 2.500 | (26.27) 1.050 |
| *IC-950 | (63.50) 2.500 | (26.27) 1.050 |
| IC-964 | (81.28) 3.200 | (26.27) 1.050 |

*IC-940 and IC-950 are non-standard non-returnable.

†Mounting hole off center on 50 positions

CRYSTAL OSCILLATOR CO SERIES

SPECIFY PART NUMBER FROM CHART BELOW

OPTION
 (Leave Blank for Standard Version)

| Part Number | Termination Suffix* | | Number of Contacts | Contact Finish | Shell Finish |
|-------------|---------------------|------|--------------------|----------------|--------------|
| | P.C. | W/W | | | |
| CO-314 | -SGG | -WGG | 4 | Gold Gold Tin | Gold Tin Tin |
| | -SGT | -WGT | | | |
| | -STT | -WTT | | | |
| CO-316 | -SGG | -WGG | 4 | Gold Gold Tin | Gold Tin Tin |
| | -SGT | -WGT | | | |
| | -STT | -WTT | | | |
| CO-624 | -SGG | -WGG | 4 | Gold Gold Tin | Gold Tin Tin |
| | -SGT | -WGT | | | |
| | -STT | -WTT | | | |

-2
 = (9.14) .360
 Wire-Wrap Tail

Wire-Wrap Option
 Requires Style -W or -ZW

-3
 = (6.60) .260
 Wire-Wrap Tail

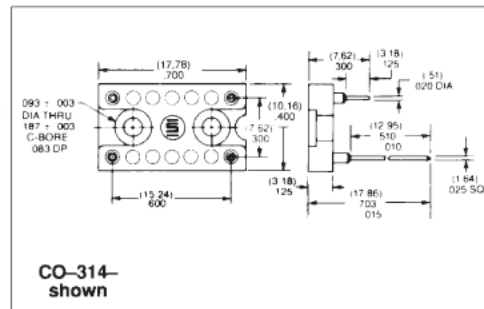
Specify desired suffix for shorter Wire-Wrap tail.

Crystal Oscillator

Accepts any component leads from .015" to .022" diameter. Low profile with precision machined lead sockets for high retention and reliability.

Specifications: CO

Same as IC Series.



Due to technical progress, all designs, specifications and components are subject to change without notice.