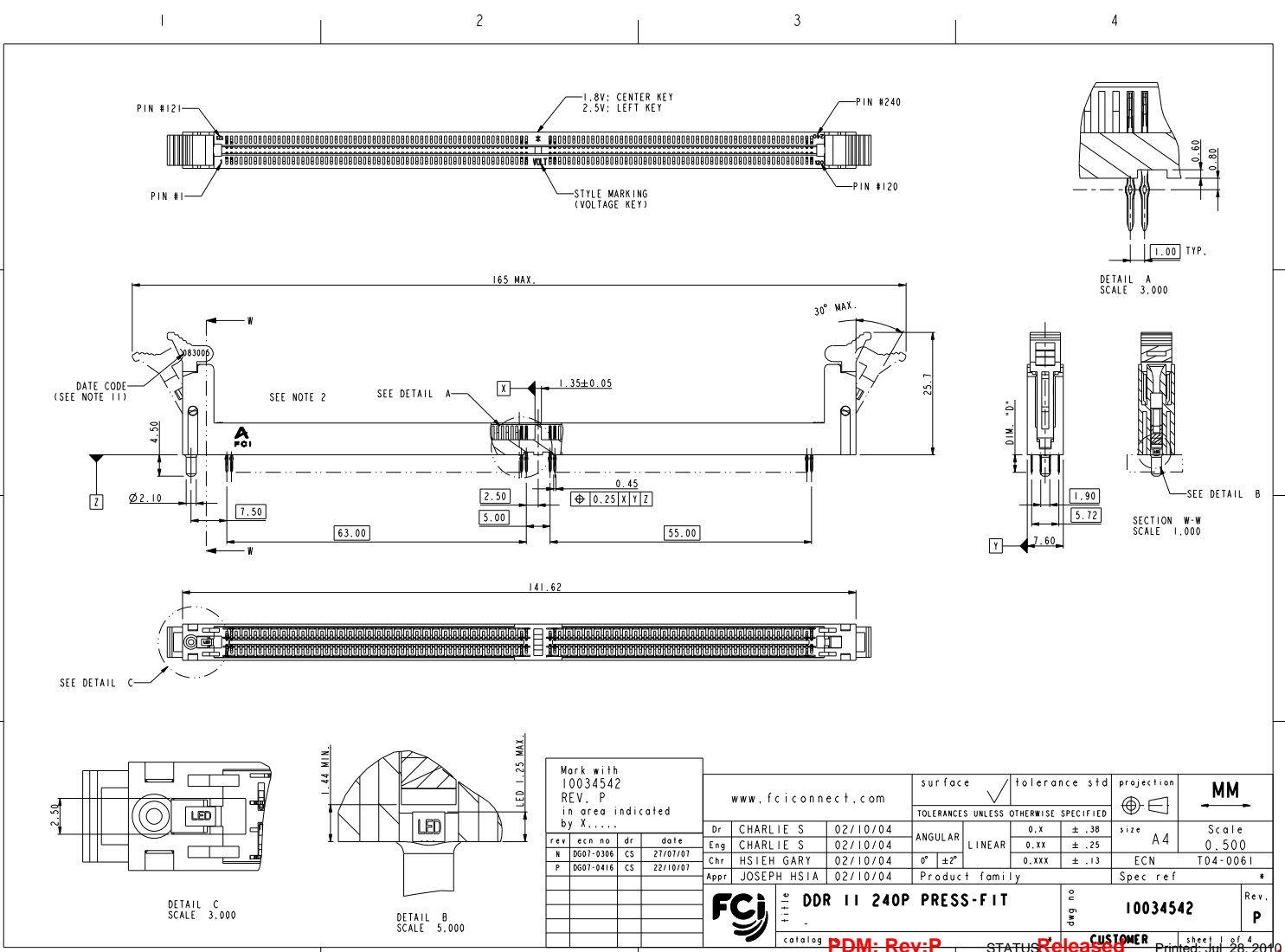
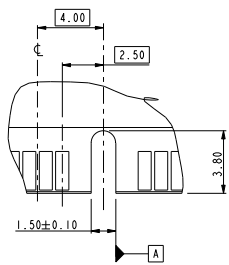
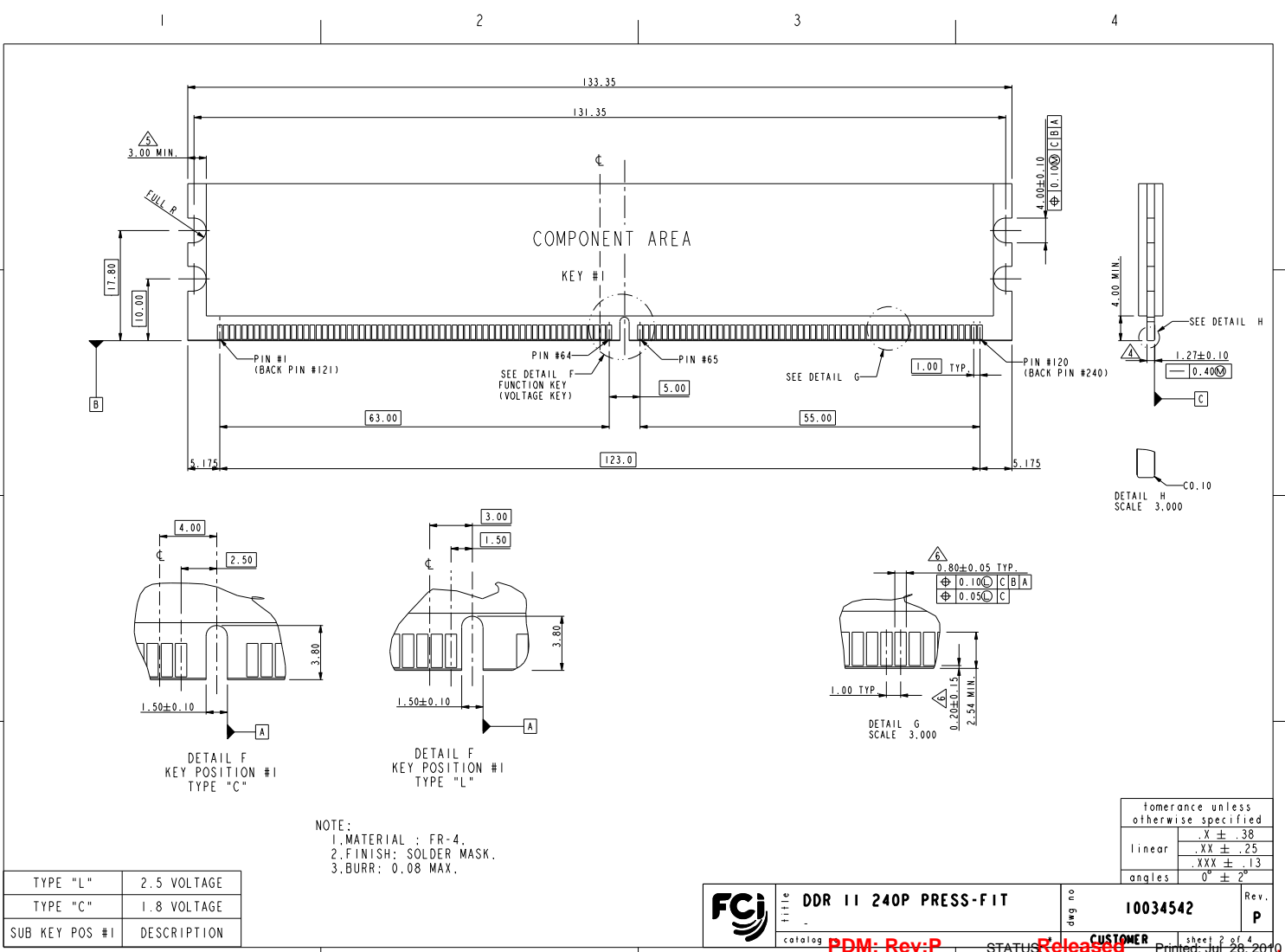


Copyright FCI.

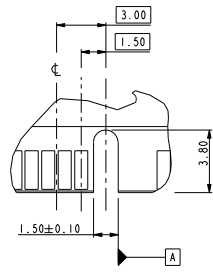


REV. P 2004-06-17

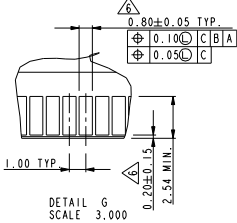
Copyright FCI.



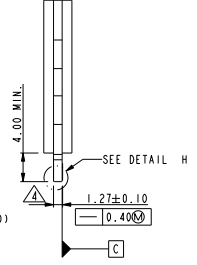
DETAIL F
KEY POSITION #1
TYPE "C"



DETAIL F
KEY POSITION #1
TYPE "L"



DETAIL G
SCALE 3,000



DETAIL H
SCALE 3,000

NOTE:
1. MATERIAL : FR-4.
2. FINISH: SOLDER MASK.
3. BURR: 0.08 MAX.

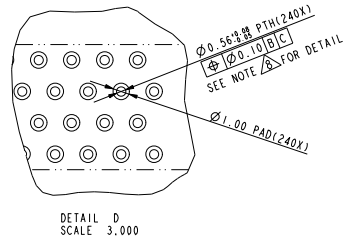
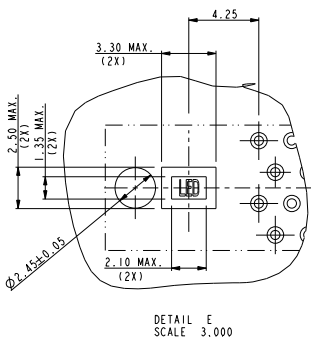
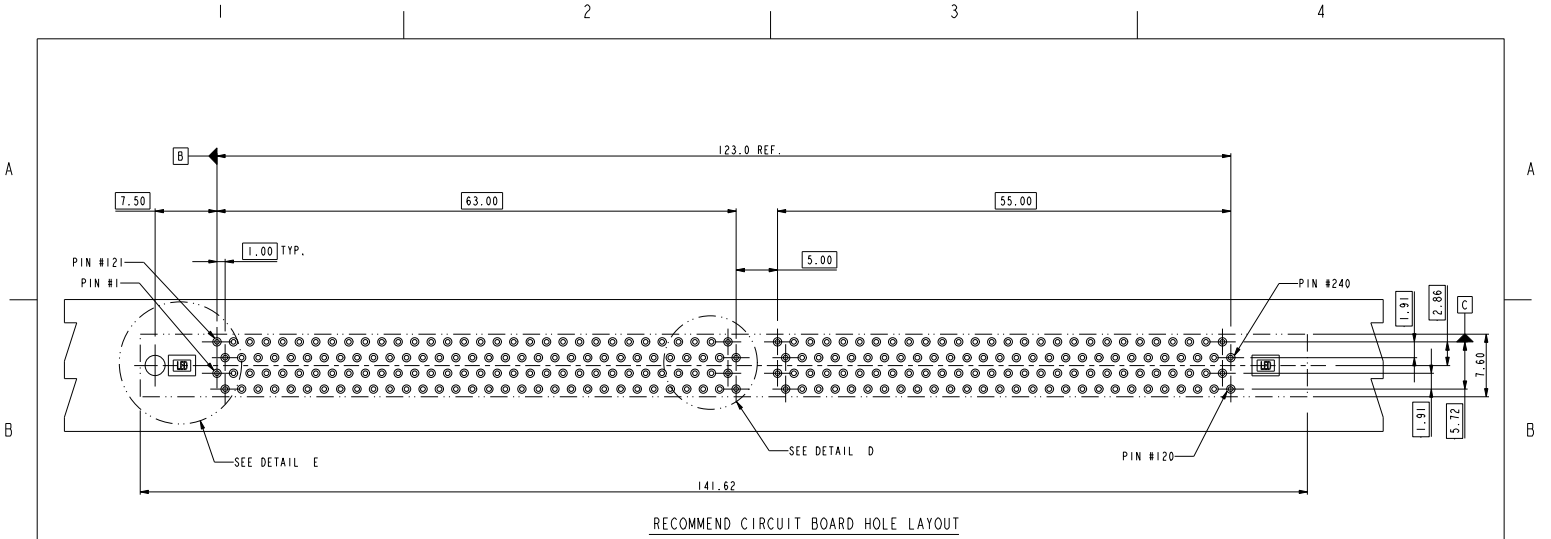
| SUB KEY POS #1 | DESCRIPTION |
|----------------|-------------|
| TYPE "L" | 2.5 VOLTAGE |
| TYPE "C" | 1.8 VOLTAGE |

| tolerance unless otherwise specified | |
|--------------------------------------|------------|
| linear | .X ± .38 |
| | .XX ± .25 |
| | .XXX ± .13 |
| angles | 0° ± 2° |

| | | | | | |
|--|------------------------------|-------------------|-----------------|-----------------|----------|
| | DDR II 240P PRESS-FIT | dwg no | 10034542 | Rev. | P |
| | catalog | PDM: Rev:P | STATUS | Released | CUSTOMER |

REV 7 - 2000-06-17

sheet 2 of 4
Printed: Jul 28, 2010



| | |
|--------------------------------------|------------|
| tolerance unless otherwise specified | |
| linear | .X ± .38 |
| | .XX ± .25 |
| | .XXX ± .13 |
| angles | 0° ± 2° |

| | | | |
|--|------------------------------|---------------------------|---|
| | DDR II 240P PRESS-FIT | dwg no 10034542 | Rev. P |
| | catalog PDM: Rev:P | STATUS Released | CUSTOMER sheet 3 of 4 Printed: Jul 28, 2010 |

Copyright FCJ.

REV 7 - 2006-06-17

1 2 3 4

10034542-□ □ □ □ □

STYLE: MECHANICAL KEYING

1 : 1.8 VOLT. W/CENTER KEY #1
2 : 2.5 VOLT. W/LEFT KEY #1

REVISE

0

TAIL LENGTH

| CODE | DIM. "D" |
|------|----------|
| 0 | 3.30 |
| 1 | 3.70 |
| 2 | 4.20 |

PLATING

| CODE | CONTACT | TAIL AREA | UNDERPLATE | CODE | CONTACT | TAIL AREA | UNDERPLATE |
|------|--|---------------------------|---|------|--|--------------------------------|---|
| 2 | 15u" (0.38um) MIN. GOLD | 35u"-100u" Tin PLATING | 50u" (1.27um) MIN. NICKEL OVERALL | 2B | 15u" (0.38um) MIN. GOLD | 35u"-100u" Tin/Lead PLATING | 50u" (1.27um) MIN. NICKEL OVERALL |
| 3 | 30u" (0.76um) MIN. GOLD | | | 3B | 30u" (0.76um) MIN. GOLD | | |
| 4 | 3u" (0.076um) MIN. GOLD | | | 4B | 3u" (0.076um) MIN. GOLD | | |
| 6 | 15u" (0.38um) MIN. GOLD (LUBRICATED) | 35u"-100u" Tin PLATING | 50u" (1.27um) MIN. NICKEL OVERALL | 6B | 15u" (0.38um) MIN. GOLD (LUBRICATED) | 35u"-100u" Tin/Lead PLATING | 50u" (1.27um) MIN. NICKEL OVERALL |
| 7 | 30u" (0.76um) MIN. GOLD (LUBRICATED) | | | 7B | 30u" (0.76um) MIN. GOLD (LUBRICATED) | | |
| 8 | 3u" (0.076um) MIN. GOLD (LUBRICATED) | | | 8B | 3u" (0.076um) MIN. GOLD (LUBRICATED) | | |
| 2LF | 15u" (0.38um) MIN. GOLD | 35u"-100u" Tin PLATING | 50u" (1.27um) MIN. NICKEL OVERALL | | | | |
| 3LF | 30u" (0.76um) MIN. GOLD | | | | | | |
| 4LF | 3u" (0.076um) MIN. GOLD | | | | | | |
| 6LF | 15u" (0.38um) MIN. GOLD (LUBRICATED) | 35u"-100u" Tin PLATING | 50u" (1.27um) MIN. NICKEL OVERALL | | | | |
| 7LF | 30u" (0.76um) MIN. GOLD (LUBRICATED) | | | | | | |
| 8LF | 3u" (0.076um) MIN. GOLD (LUBRICATED) | | | | | | |

COLOR OF HOUSING AN EJECTOR

- 0 : BLACK HOUSING + IVORY EJECTOR
- 1 : BLACK HOUSING + AMBER EJECTOR
- 2 : BLACK HOUSING + BLACK EJECTOR
- 3 : BLUE HOUSING + IVORY EJECTOR
- 4 : BLUE HOUSING + AMBER EJECTOR

- NOTE:
1. MATERIAL:
HOUSING: HIGH PERFORMANCE RESINS, GLASS FILLED UL94V-0 RATED, COLOR: BLACK.
EJECTOR: HIGH PERFORMANCE RESINS, GLASS FILLED UL94V-0 RATED, COLOR: NATURAL.
 2. TERMINAL: COPPER ALLOY.
 3. FCI LOGO TO BE APPROXIMATELY LOCATED AS SHOWN ON PRINT.
 4. PRODUCT SPECIFICATION: GS-12-273
 5. CARD THICKNESS APPLIES ACROSS TABS AND INCLUDES PLATING AND / OR METALIZATION.
 6. 3.00mm MINIMUM APPLIES TO BOTH 4.00mm WIDE NOTCH LENGTH AND COMPONENT KEEPOUT AREA.
 7. LEADING EDGE OF CONTACT PADS SPECIFIED BY THE KEEP OUT ZONE SHALL BE FREE OF BURRS AND EXTERNAL TIE BARS.
FOR OPTIMUM PERFORMANCE, THE TIE BAR IS TO BE ON AN INTERNAL LAYER SO THAT THE REMNANT CANNOT CAUSE CONTACT DAMAGE.
 8. PACKAGING SPECIFICATION: GS-14-528.
 9. ALL PTH SHOULD BE 0.66mm DIA DRILLED AND 0.025mm MIN. ELECTRO-DEPOSITED COPPER THK ON THROUGH HOLE WALL.
 10. THIS PRODUCT MEETS EUROPEAN UNION DIRECTIVES AND OTHER COUNTRY REGULATIONS AS DESCRIBED IN GS-22-008.
 11. THE HOUSING WILL WITHSTAND EXPOSURE TO 260° PEAK TEMPERATURE FOR 20 SECONDS IN A IR REFLOW OVEN.

DATE CODE: X X X X X X
 YEAR
 DATE
 MONTH

| | | | | | |
|--|---------|-----------------------|--------|----------|-----------|
| | Title | DDR II 240P PRESS-FIT | dwg no | 10034542 | Rev. P |
| | catalog | PDM: Rev:P | | | |

sheet 4 of 4
Printed: Jul 28, 2010