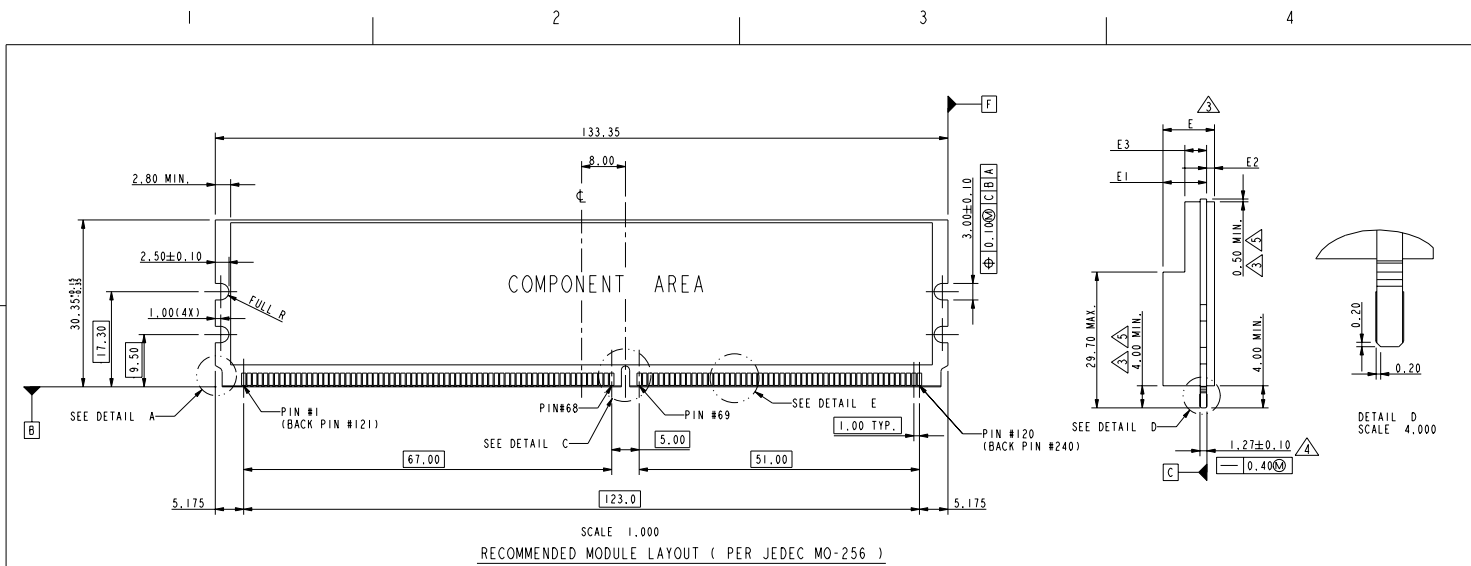
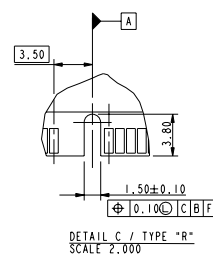
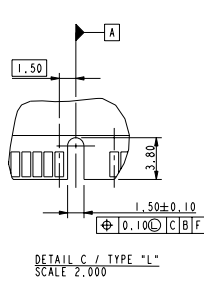
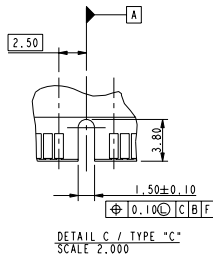
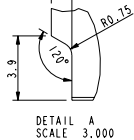
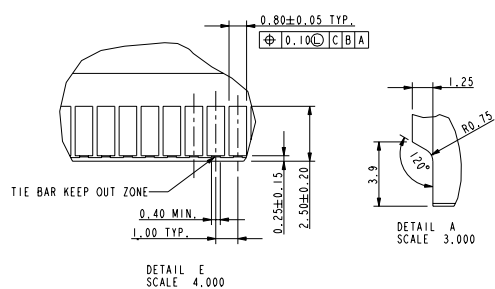


REV. P 2006-01-28



SCALE 1.000
RECOMMENDED MODULE LAYOUT (PER JEDEC MO-256)



tolerances unless otherwise specified		
linear	.X	±0.38
	.XX	±0.15
	.XXX	±0.13
angles	X°	±2°

TYPE	R	X, X VOLTAGE	6.80	1.40	2.80	8.20	6.80	3.00	4.40	9.80
TYPE L		2.5 VOLTAGE	6.80	1.40	2.80	8.20	6.80	3.00	4.40	9.80
TYPE C		1.8 VOLTAGE	6.80	1.40	2.80	8.20	6.80	3.00	4.40	9.80
SUB KEY POS. #1	DESCRIPTION	DIM. E1 MAX.	DIM. E2 MAX.	DIM. E3 MAX.	DIM. E MAX.	DIM. E1 MAX.	DIM. E2 MAX.	DIM. E3 MAX.	DIM. E MAX.	DIM. E MAX.
		TYPE 1				TYPE 2				

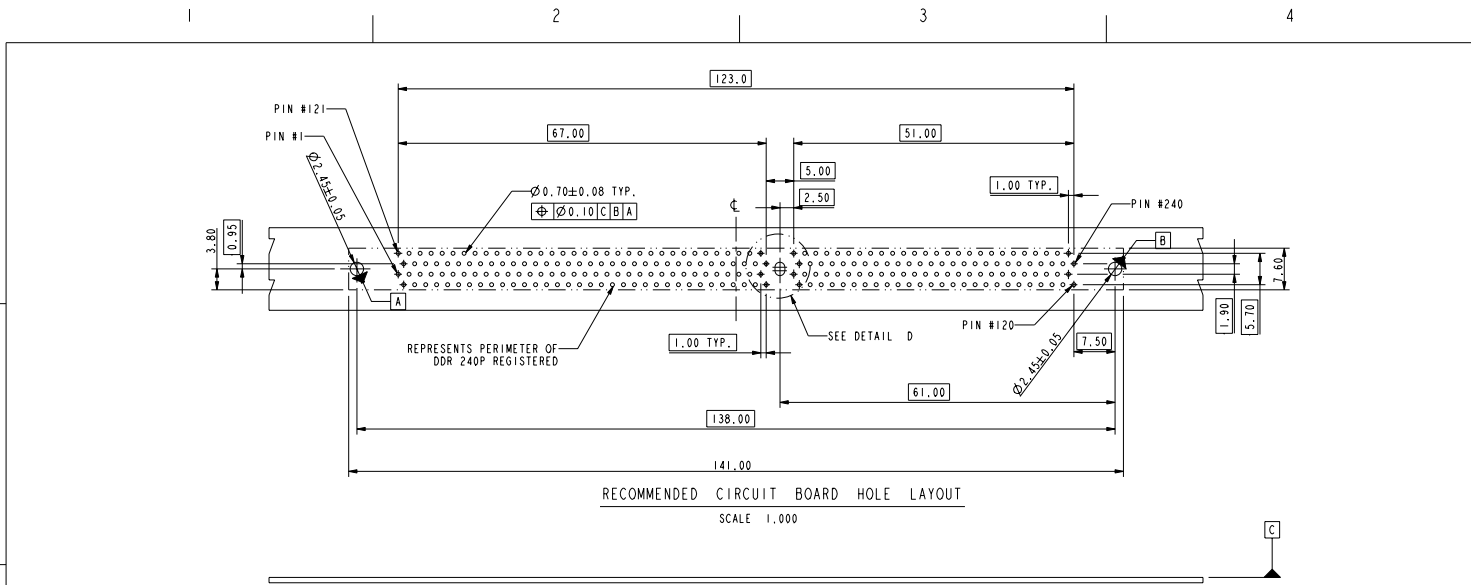
Mark with 10037402 REV. P in area indicated by X....

rev	ech no	dr	date
-	-	-	-
-	-	-	-
-	-	-	-
-	-	-	-
-	-	-	-

Material	Mat code	Heat treat	Plating/Finish	Spec ref	tolerance	projection	size	Scale
					✓	⊕	A4	0.500
Dr CHARLIE S	05/30/06	Product family						
Chr BEER FU	05/30/06	Model Name	10037402	ECN				
Appr JOESPH HSIA	05/30/06	Model Revision		REL Level				
FCI	Title		DDR11 240P, FBD1MM		dwg no	10037402		Rev. P
Prof/E file	catalog	PDM: Rev:P	STATUS Released	CUSTOMER DRAWING	sheet 2 of 4	Printed: Jul 26, 2010		



This document is the property of and embodies CONFIDENTIAL and PROPRIETARY information of FCI. No part of the information herein may be disseminated, copied, or reproduced in any form or by any means without the written consent of FCI. Copyright FCI.

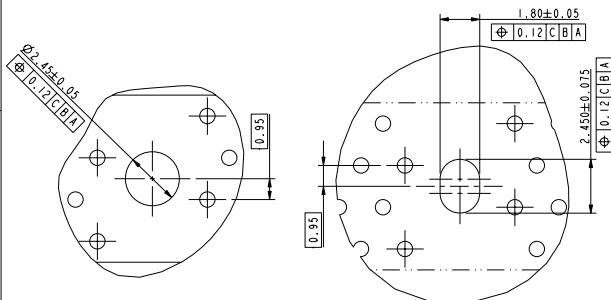


RECOMMENDED CIRCUIT BOARD HOLE LAYOUT
SCALE 1,000

DETAIL D
SCALE 4,000

OPTION 1
CENTER ROUND HOLE

OPTION 2
CENTER SLOT



Tolerances unless otherwise specified		
linear	.X	±0.38
	.XX	±0.25
	.XXX	±0.13
angles	X°	±2°

Mark with 10037402 REV. P in area indicated by X.....

Material		Spec ref		tolerance		projection		MM	
Mat code		✓				⊕		←	
Heat treat		Product family		size		A4		Scale	
Plating/Finish		10037402		ECN		DG06-0209		0.500	
Dr	CHARLIE S	05/30/06	Model Name		10037402		REL Level		
Eng	CHARLIE S	05/30/06	Model Revision						
Chr	BEER FU	05/30/06	Model Revision						
Appr	JOESPH HSIA	05/30/06	Model Revision						
FCI		Title		Dwg no		10037402		Rev.	
PDM: Rev:P		DDR11 240P, FBD1MM		10037402		P			
Prof/E file		catalog		CUSTOMER DRAWING		sheet 3 of 4		Printed: Jul 26, 2010	



10037402-□ □ □ □ □

STYLE : MECHANICAL KEYING

- 1 : 1.8 VOLT. W/TYPE "C"
- 2 : 2.5 VOLT. W/TYPE "L"
- 3 : X.X VOLT. W/TYPE "R"

METAL CLIP
(WITH NI 1.27 um MIN. PLATING)

- 1 : WITH METAL CLIP + DIM. "D"=3.05
- 2 : WITH METAL CLIP + DIM. "D"=3.56
- 3 : WITH METAL CLIP + DIM. "D"=3.43

TAIL LENGTH

CODE	DIM. "B"	PCB THICKNESS
0	2.54	1.47 mm (0.058")
1	2.67	1.60 mm (0.063")
2	3.18	2.36 mm (0.093")
3	4.00	3.18 mm (0.125")

PLATING

CODE	CONTACT	SOLDERTAIL	UNDERPLATE
2	15 u"(0.38um) MIN. GOLD		
3	30u"(0.76um) MIN. GOLD	100u"(2.54um) MIN. TIN/LEAD	50u"(1.27um) MIN. NICKEL OVERALL
4	3u"(0.076um) MIN. GOLD		
7LF	15u"(0.38um) MIN. GOLD		
8LF	30u"(0.76um) MIN. GOLD	100u"(2.54um) MIN. 100% TIN	50u"(1.27um) MIN. NICKEL OVERALL
9LF	3u"(0.076um) MIN. GOLD		
2N	15 u"(0.38um) MIN. GOLD		
3N	30 u"(0.76um) MIN. GOLD	100u"(2.54um) MIN. TIN/LEAD	90u"(2.29um) MIN. NICKEL OVERALL
4N	3 u"(0.076um) MIN. GOLD		
7NLF	15 u"(0.38um) MIN. GOLD		
8NLF	30 u"(0.76um) MIN. GOLD	100u"(2.54um) MIN. 100% TIN	90u"(2.29um) MIN. NICKEL OVERALL
9NLF	3 u"(0.076um) MIN. GOLD		

COLOR OF HOUSING AND EJECTOR

- 0 : BLACK HOUSING + IVORY EJECTOR
- 1 : BLUE HOUSING + IVORY EJECTOR
- 2 : BLACK HOUSING + BLACK EJECTOR
- 3 : IVORY HOUSING + IVORY EJECTOR

NOTE:

1. MATERIAL : HOUSING: HIGH PERFORMANCE RESINS, GLASS FILLED UL94V-0 RATED. EJECTOR: HIGH PERFORMANCE RESINS, GLASS FILLED UL 94V-0 RATED. TERMINAL : COPPER ALLOY. METAL CLIP: COPPER ALLOY. PRODUCT SPECIFICATION: GS-12-300.
2. DIMENSIONS APPLICABLE WHEN COMPONENTS MOUNTED ON ONE OR BOTH SIDES. CARD THICKNESS APPLIES ACROSS TABS AND INCLUDES PLATING AND/OR MEALIZATION STRAIGHTNESS CALLOUT APPLIES TO ZONE DEFINED BY THE 4.00 CONTACT AREA DIMENSION FOR THE ENTIRE LENGTH OF 133.35.
3. BOARD OF COMPONENT AREA.
4. LATCH DESIGN INCLUDES COMPLEMENTARY FEATURE TO ACCOMMODATE MODULE END NOTCHES AS DEFINED IN DETAIL A OF P.2 AND AS SPECIFIED IN MO-256.
5. THIS PRODUCT MEETS EUROPEAN UNION DIRECTIVES AND OTHER COUNTRY REGULATIONS AS DESCRIBED IN GS-22-008.
6. THE HOUSING WILL WITHSTAND EXPOSURE TO 260°C PEAK TEMP. FOR 10 SECONDS IN A WAVE SOLDER APPLICATION.
7. 10037402-XXXXXX1LF SERIES ARE FOR LEAD-FREE OPTIONS.
8. DATE CODE: XXXXX** SHOWS DAY/MONTH/YEAR. ** MEANS PRODUCTION LINE CODE. EX:122505 MEANS 12/25/2005. WILL BE PRINTED ON SOCKET.

TOLERANCES UNLESS OTHERWISE SPECIFIED		
LINEAR	0.X	±0.3
	0.XX	±0.15
	0.XXX	±0.100
ANGULAR	0°	±2°

Mark with 10037402 REV. P in area indicated by X.....	Material		Spec ref				
	Mat code		✓	tolerance			
	Heat treat						
	Plating/Finish			projection MM			
	Dr	CHARLIE S			05/30/06	size	A4
	Eng	CHARLIE S	05/30/06	Product family		ECN	DG06-0209
	Chr	BEER FU	05/30/06	Model Name		10037402	
	Appr	JOESPH HSIA	05/30/06	Model Revision		REL Level	
			title DDR11 240P. FBD1MM		drawing no 10037402	Rev. P	
	Prof/E file catalog		PDM: Rev:P		STATUS: Released		CUSTOMER DRAWING sheet 4 of 4