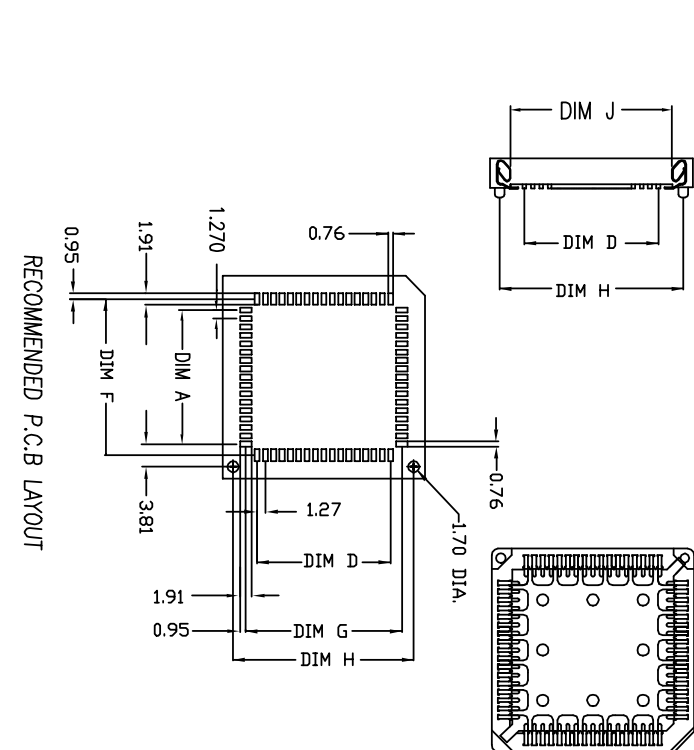
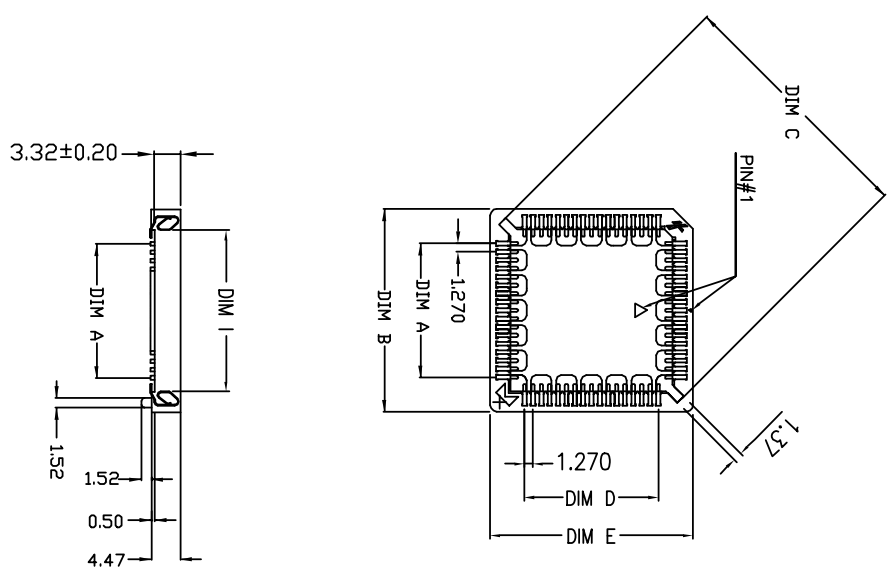


PRODUCT NO.
SEE NOTE



RECOMMENDED P.C.B LAYOUT

mat'l. code	ec'n no	dr	date	tolerances unless otherwise specified	CUSTOMER COPY	title	product family	code	code
X	T60008	AC	02/08/96	.XX ±0.25		PLCC SMT SOCKET	PLCC		
Y	T10136	JH	03/18/01	.XXX ±0.20		PLCC-XXP-T-SMT	PLCC		
AA	TR03-0452	J.C	10/15/03	0° ±2°					
AB	TR05-0017	W.L	01/24/05						
AC	TR05-0114	W.L	05/09/05						
AD	TR05-0212	W.L	09/21/05						
AE	TR06-0070	J.H	05/8/06						
sheet index	revision	AE	AE	AE	AE	AE	AE	AE	AE
1	2	3	4	5					

form no. 7530-001-103

code 24180

code 69802

code TWN



1 2 3 4

TABLE I

No. of Contact	DIM. A ±0.20	DIM. B ±0.20	DIM. C ±0.20	DIM. D ±0.20	DIM. E MAX.	DIM. F ±0.10	DIM. G ±0.10	DIM. H ±0.20	DIM. I ±0.20	DIM. J ±0.20
20	5.08	15.24	16.70	5.08	15.24	8.48	8.48	12.70		9.40
28	7.62	17.78	20.30	7.62	17.78	11.02	11.02	15.24		11.94
32	7.62	17.78	22.50	10.16	20.32	11.02	13.56	17.78	11.94	14.48
44	12.70	22.86	27.50	12.70	22.86	16.10	16.10	20.32		17.02
52	15.24	25.40	31.10	15.24	25.40	18.64	18.64	22.86		19.56
68	20.32	30.82	38.30	20.32	30.82	23.27	23.27	27.94		24.64
84	25.40	35.90	45.50	25.40	35.90	28.80	28.80	33.02		29.72

TABLE II

PART NO.	WITH POLARIZING PEGS	PACKAGING BY PVC TUBE	PACKAGING BY TAPE & REEL	MCK PART NO.
69802-0XX	✓	✓		PLCC-XXP-T-SMT-P
69802-1XX		✓		PLCC-XXP-T-SMT
69802-4XX			✓	PLCC-XXP-T-SMT-TR
69802-0XXPT	✓	✓		PLCC-XXP-T-SMT-P-PT
69802-1XXPT		✓		PLCC-XXP-T-SMT-PT
69802-4XXPT			✓	PLCC-XXP-T-SMT-TR-PT
69802-0XXLF	✓	✓		PLCC-XXP-T-SMT-P-LF
69802-1XXLF		✓		PLCC-XXP-T-SMT-LF
69802-4XXLF			✓	PLCC-XXP-T-SMT-TR-LF

NOTE:
 ORDERING DATA: 69802- X XX XX

LF: Lead Free
 PT: PURE TIN PLATED.
 BLANK: TIN/LEAD PLATED.
 NO OF CONTACTS
 SEE TABLE II.

mat'l. code		tolerances unless otherwise specified		CUSTOMER COPY		FCI Electronics www.fciconnect.com	
ltr	ech no	dr	ddate	lineor	projection	title	product family
AE				.XX ±0.25 .XXX ±0.20	mm	PLCC SMT SOCKET PLCC-XXP-T-SMT	PLCC
				angles 0° ±2°	mm		PLCC
				dr	mm		PLCC
				enqr	JASON HSU		PLCC
				chr	J. TSAO		PLCC
				apppd	L. WANG		PLCC
sheet index	revision sheet						

form no. 7530-001-103 1 2 3 4

code code
24180



Specification:

1) Material :

1-1 Housing : PPS,UL94V-0 Color in Brown.
 Plating : 150u" Tin/Lead or Pure Tin Min. Over 40u"
 Nickel Min.
 Contact : Copper Alloy.

2) Electrical :

Rated Voltage : 120V AC/DC
 Current Rating : 1.0A AC/DC
 Contact Resistance : 20mΩ Max.
 Insulation Resistance : 10000MΩ min.
 Withstanding Voltage : 600V AC(RMS) 1 minute

3) Mechanical:

Contact Retention: 283g min.
 Insertion Force : 13 lb Max. (20P) MAX.
 15 lb Max. (28P)
 15 lb Max. (32P)
 19 lb Max. (44P)
 22 lb Max. (52P)
 26 lb Max. (68P)
 33 lb Max. (84P)
 Withdrawal Force : 1.1 lb min. (20P) MIN.
 1.1 lb Max. (28P)
 1.5 lb Max. (32P)
 2.0 lb Max. (44P)
 3.5 lb Max. (52P)
 4.0 lb Max. (68P)
 4.5 lb Max. (84P)

4) Environmental :

Operating Temperature Range : -55°C ~ +125°C

5) MANUFACTURING PROCESS COMPATIBILITY: THE HOUSING WILL WITHSTAND EXPOSURE TO 245°C PEAK TEMPERATURE FOR 5 SECOND IN A IR REFLOW APPLICATION.

mat'l. code	tolerances unless otherwise specified		CUSTOMER COPY	 projection mm	 title PLCC SMT SOCKET PLCC-XXP-T-SMT	FCI Electronics www.fciconnect.com	product family PLCC	size dwg no 69802	code TWIN sheet 3 of
lbr ecn no	.X ±0.38	linear .XX ±0.25	scale						
AE	.XXX ±0.20	angles 0° ±2°	N/A	A4					
		dr JASON HSU 3/16/00							
		engr JASON HSU 3/16/00							
		chr J. TSAO 3/16/00							
		appd L. WANG 3/16/00							
sheet	revision								
Index	sheet								

form no. 7530-001-103

1

2

3

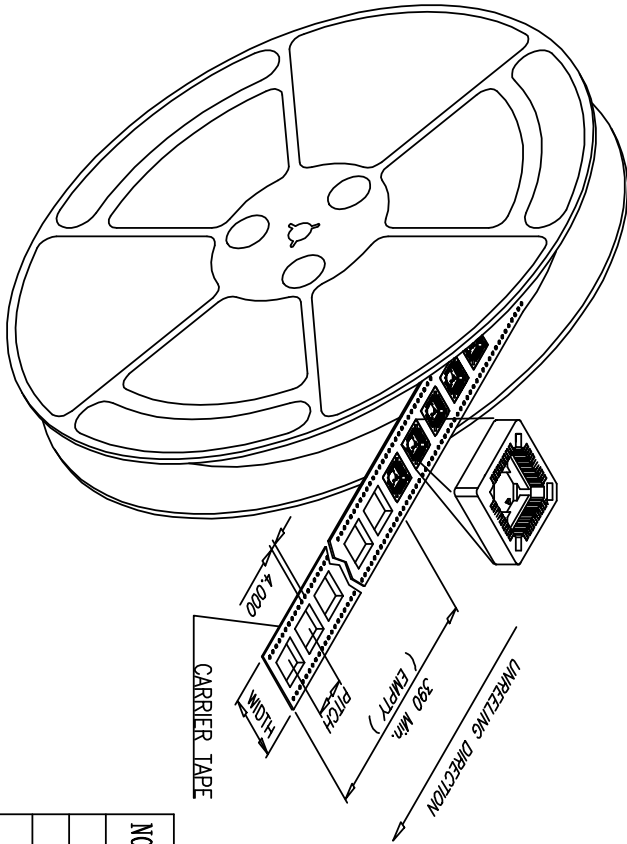
4

1 | 2

3

4

code code
24180



NO. OF PIN.	WIDTH	PITCH	PCS/REEL	REEL/CARTON TOTAL (PCS)
20P	24.0	24.00	470	12 5640
28P	32.0	24.00	390	10 3900
32P	32.0	24.00	390	10 3900
44P	44.0	32.00	250	8 2000
52P	44.0	32.00	250	8 2000
68P	44.0	36.00	220	8 1760
84P	56.0	40.00	200	6 1200

* REEL DIAMETER: Ø13 in "

mat'l. code	tolerances unless otherwise specified	CUSTOMER COPY	projection	title
AE	X ±0.38		mm	PLCC SMT SOCKET
	.XX ±0.25			PLCC-XXP-T-SMT-TR
	.XXX ±0.20			product family PLCC
	angles or ±2°			code TWN
	dr JASON HSU 3/16/00			sheet 4 of 4
	enfr JASON HSU 3/16/00			
	chr J. TSAO 3/16/00			
	pppd L. WANG 3/16/00			
sheet index	revision sheet	scale N/A		

form no. 7530-001-103 1 2 3 4 cage code 24180

form no. 7530-001-103

1

2

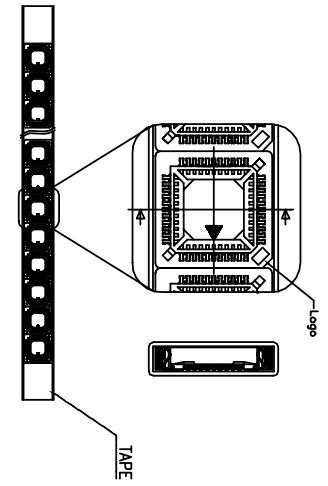
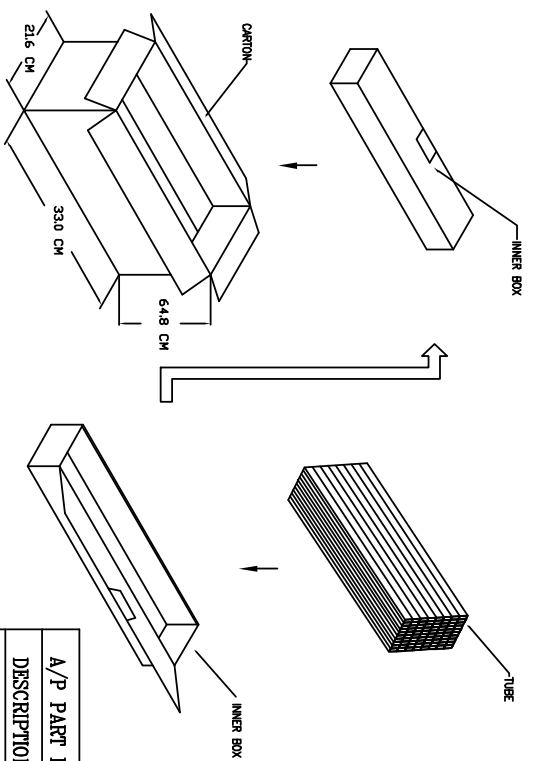
3

4

1 2

3

4



PACKAGING DIRECTION FOR PVC TUBE

A/P PART NO.	69802-X20X	69802-X28X	69802-X32X	69802-X44X	69802-X52X	69802-X68X	69802-X84X
DESCRIPTION	20P	28P	32P	44P	52P	68P	84P
PCS/TUBE	37	32	28	25	23	18	16
PCS/INNER BOX	1110	832	728	500	460	270	224
INNER BOX/CARTON	10	10	10	10	10	10	10
TOTAL (PCS)	11100	8320	7280	5000	4600	2700	2240
N.W	12.5 kg	10.5 kg	10.0 kg	8.5 kg	8.0 kg	7.5 kg	7.0 kg
G.W	20.0 kg	18.5 kg	18.0 kg	17.0 kg	16.5 kg	16.0 kg	15.5 kg

mat'l code		tolerances unless otherwise specified		CUSTOMER COPY		title	
ltr	ecn no	dr	date	linear	projection	product family	code
AE				.XX ±0.25	mm	PLCC	TWIN
				.XXX ±0.20	mm	PLCC-SMT SOCKET	sheet
				angles 0° ±2°	mm	PLCC-XXP-T-SMT	5 of
				dr JASON HSU 3/16/00	scale		
				engr JASON HSU 3/16/00	N/A		
				chr J. TSAO 3/16/00			
				appd L. WANG 3/16/00			
sheet	revision						
index	sheet						

cage code 24180

FCI Electronics
 www.fciconnect.com

product family PLCC
 size/dwg no 69802
 code TWIN
 sheet 5 of