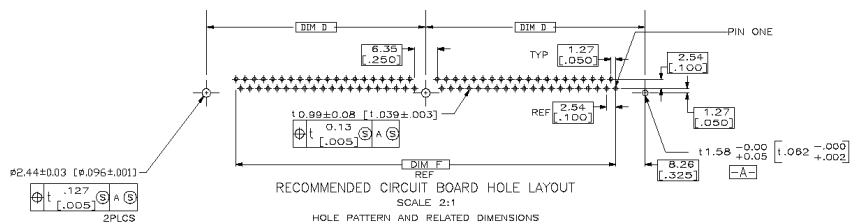


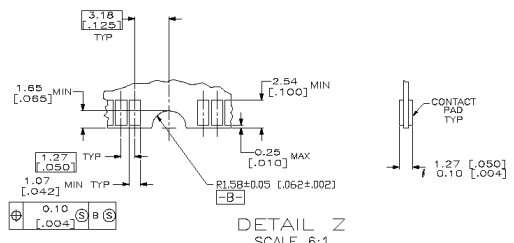
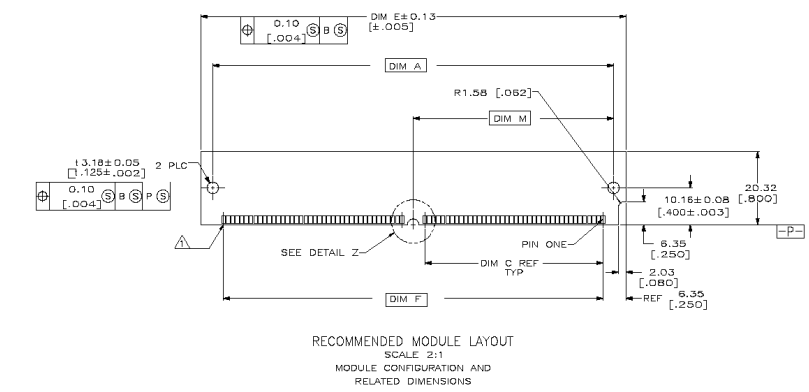


REV	DATE	DESCRIPTION	BY	APP'D
00		SEE SHEET 1		



△ FOR OPTIMUM PERFORMANCE, CONTACT PAD PLATING SHOULD BE SMOOTH AND FLAT. COPPER CONTACT PADS ARE TO BE OVERPLATED WITH .00127(.000050) MIN THK NICKEL FOLLOWED WITH .00101(.000040) MIN THK GOLD PLATING.

△ CONTACT MATING AREA:  
0.00076 (.000030) MIN THICK GOLD.  
SOLDERTAIL: 0.00381 (.000150) MIN. THK TIN.  
UNDERPLATE: 0.00127 (.000050) MIN. THK NICKEL OVER ENTIRE CONTACT.



DIM M	DIM J	DIM F	DIM E	DIM D	DIM C	DIM B	DIM A	POSN	PART NO
58.22 [2.292]	127.00 [5.000]	110.49 [4.350]	123.19 [4.850]	63.50 [2.500]	52.07 [2.050]	130.81 [5.150]	116.43 [4.584]	84	8-5382487-4
50.60 [1.992]	111.76 [4.400]	95.25 [3.750]	107.95 [4.250]	55.88 [2.200]	44.45 [1.750]	115.57 [4.550]	101.19 [3.984]	72	7-5382487-2
48.06 [1.892]	106.68 [4.200]	90.17 [3.550]	102.87 [4.050]	53.34 [2.100]	41.91 [1.650]	110.49 [4.350]	96.11 [3.784]	68	6-5382487-8
30.28 [1.192]	71.12 [2.800]	54.81 [2.150]	67.31 [2.650]	35.36 [1.400]	24.13 [0.950]	74.93 [2.950]	60.55 [2.384]	40	4-5382487-0

DO NOT SCALE PRINT. UNLESS SPECIFIED DIMENSIONS IN MM (INCHES) TOLERANCES IN: 1 3 PL DEC (0.1X.005) 5 PL DEC (0.1X.002)	DR SWAGS SERIES 1E STAMP NO	AMP AMP Incorporated Harrisburg, PA 17105-3506
MATERIAL	PRODUCT SPEC	
FINISH	APPLICATION SPEC	NAME SIMM II, RTANG, 1.27 [.050] ASSY, 6.35 [.250] HGT
WEIGHT	SCALE	SIZE D 00779 DRAWING NO 5382487 SHEET 2 OF 2

CUSTOMER DRAWING