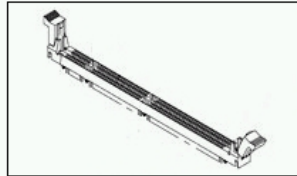
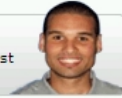


5390195-6 Product Details

Have a Question?

Chat with a Product Information Specialist



5390195-6

TE Internal Number: 5390195-6

Active

Memory Sockets

Always EU RoHS/ELV Compliant ([Statement of Compliance](#))

Product Highlights:

- Socket Type = Memory Card
- Socket Style = DIMM 2P
- Gold Flash over Palladium Nickel or Gold (30) over Nickel Contact Plating, Mating Area, Material
- 168 Positions
- DRAM Type = Non-Buffered

[View all Features](#)

Quick Links

- ▶ [Check Pricing & Availability](#)
- ▶ [Search for Tooling](#)
- ▶ [Product Feature Selector](#)
- ▶ [Contact Us About This Product](#)

[Add to My Part List](#) [Request Sample](#) [Find Similar Products](#) [Buy Product](#)

Documentation & Additional Information

Documents are temporarily unavailable. We are working hard to correct the problem. Please try again later.

Additional Information:

- [Product Line Information](#)

Related Products:

- [Tooling](#)

Product Features (Please use the Product Drawing for all design activity)

Product Type Features:

- Socket Style = DIMM 2P
- [DRAM Type](#) = Non-Buffered
- PCB Mount Style = Through Hole
- [Module Orientation](#) = 25°
- PCB Mount Retention = With
- Profile = Low

Mechanical Attachment:

- [Center Retention Hole Diameter \(mm \[in\]\)](#) = 2.40 [0.094]

Electrical Characteristics:

- [DRAM Voltage](#) = 3.3 V

Termination Related Features:

- [Termination Post Length \(mm \[in\]\)](#) = 2.60 [0.102]
- Solder Tail Contact Plating = Tin over Nickel

Body Related Features:

- Socket Type = Memory Card
- [Number of Positions](#) = 168
- [Row-to-Row Spacing \(mm \[in\]\)](#) = 1.60 [0.063]
- [Centerline \(mm \[in\]\)](#) = 1.27 [0.050]
- [Number of Rows](#) = Dual
- Ejector Type = Standard
- [Ejector Location](#) = Both Ends
- Center Post = With
- [Number of Keys](#) = 2
- PCB Mount Retention Type = Boardlock(s)
- Mount Type = Printed Circuit Board
- Module Key Type = Key1= Offset Right / Key2= Center

Contact Related Features:

- Contact Plating, Mating Area, Material = Gold Flash over Palladium Nickel or Gold (30) over Nickel
- Contact Base Material = Phosphor Bronze
- [Retention Post\(s\) Location](#) = Center

Housing Related Features:

- Housing Material = High Temperature Thermoplastic
- Housing Color = Black
- UL Flammability Rating = UL 94V-0

Configuration Related Features:

- [Insertion Style](#) = Direct Insert
- Center Key (mm [in]) = Center

Industry Standards:

- [RoHS/ELV Compliance](#) = RoHS compliant, ELV compliant
- [Lead Free Solder Processes](#) = Wave solder capable to 240°C
- RoHS/ELV Compliance History = Always was RoHS compliant

Packaging Related Features:

- Packaging Method = Tray

Other:

- Brand = AMP

BOOKMARK

Corporate Information

[Who We Are](#)
[Investors](#)
[News Room](#)
[Supplier Portal](#)
[Careers](#)

Quick Links

[Check Distributor Inventory](#)
[Cross Reference](#)
[Find Documents & Drawings](#)
[Product Compliance Support Center](#)
[Site Map](#)

Customer Support

[Email or Chat with Us](#)
[Find a Phone Number](#)
[Search Knowledge Base](#)
[Manage Your Account](#)

Sign up for our eNewsletter

Enter your email address

Follow us on: