

4

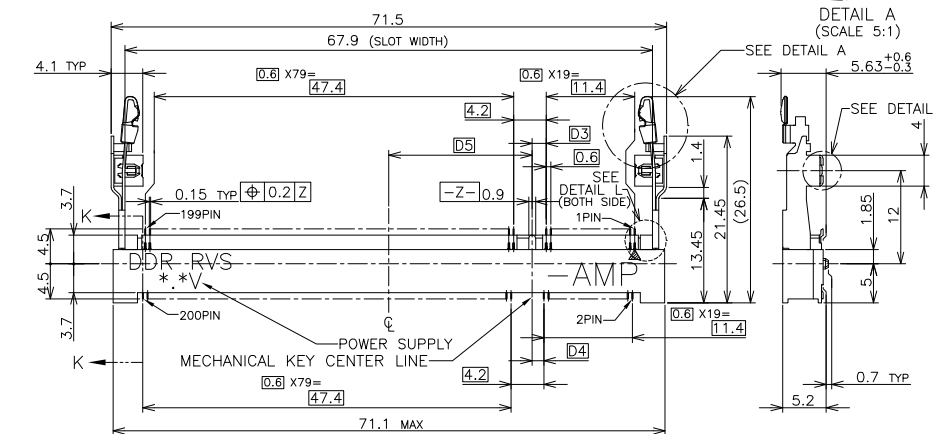
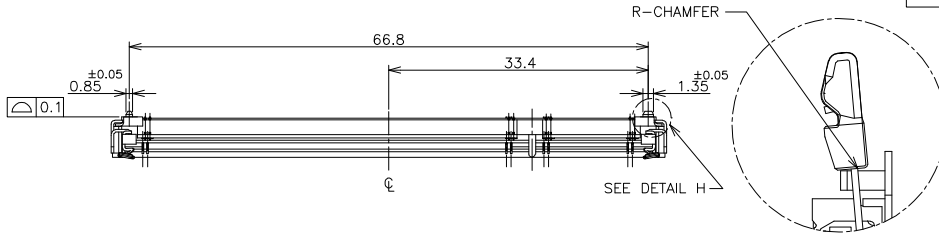
3

2

1

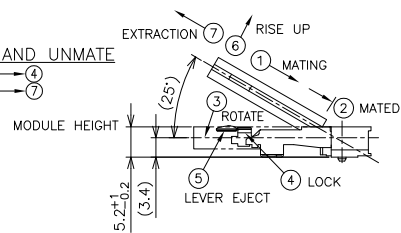
THIS DRAWING IS UNPUBLISHED. RELEASED FOR PUBLICATION OCT. 2001.
 © COPYRIGHT 2001 BY TYCO ELECTRONICS CORPORATION. ALL RIGHTS RESERVED.

LOC	DIST	REVISIONS			
P	LTR	DESCRIPTION	DATE	DWN	APVD
L		REVISED (ECR-06-024642)	17OCT06	S.Y	S.Y



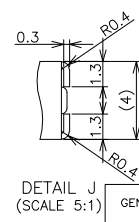
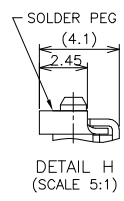
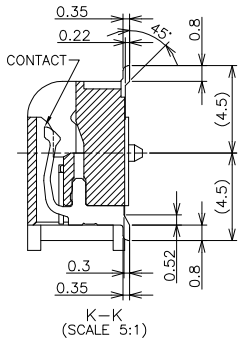
HOW TO MATE AND UNMATE

- MATE: ① → ④
- UNMATE: ⑤ → ⑦



(APPLIED TO SHEET 1-2)

- MATERIAL ; HOUSING: HIGH TEMPERATURE THERMO PLASTIC UL94V-0
CONTACT: COPPER ARROY
LOCK LEVER STAINLESS STEEL
SOLDER PEG: COPPER ARROY
 - FINISH ; CONTACT AREA: GOLD FLASH ON 0.0013MIN ALL OVER NICKEL.
SOLDERING AREA: GOLD FLASH PLT.
SOLDER PEG: TIN PLATING.
- ⚠ MECHANICAL KEY POSITION OF CONNECTOR SEE TABLE.
 - ⚠ TOLERANCES NON-CUMULATIVE.
 - ⚠ NOT TO SCALE.
 - ⚠ [] INSIDE MUST BE RESIST COAT EXCEPT SOLDER PATTERN.
 - 7. IF THE MODULE DOESN'T INSERT AND LOCK IN THE LATCH SMOOTHLY, OPEN WIDE BOTH LATCHES BY MANUAL. AND THE MODULE MUST BE INSERTED AND LOCKED IN THE LATCH.



GENERAL TOLERANCE
 10 ≥ ±0.2
 30 ≥ >10: ±0.25
 100 ≥ >30: ±0.3
 ANGLES: ±3°

TIN PLATING	AVAILABLE	1.8V (DDR2)	17.55	2.4	2.7	200	1-1473150-4													
	AVAILABLE	1.8V (DDR2)	17.55	2.4	2.7	200	1473150-4													
	AVAILABLE	2.5V (DDR1)	18.45	1.5	1.8	200	1473150-1													
REMARK (PEG)	TOOLING STATUS	POWER SUPPLY	D5	D4	D3	POS	PART NO.													
THIS DRAWING IS A CONTROLLED DOCUMENT.		DWN T.FUMIKURA 16JAN02	Tyco Electronics AMP K.K. Kawasaki, Japan																	
DIMENSIONS: MM		CHK T.KUSUHARA 16JAN02																		
TOLERANCES UNLESS OTHERWISE SPECIFIED:		APVD I.ENOMOTO 17JAN02																		
<table border="1"> <tr><td>0 PLC</td><td>±</td></tr> <tr><td>1 PLC</td><td>±</td></tr> <tr><td>2 PLC</td><td>±</td></tr> <tr><td>3 PLC</td><td>±</td></tr> <tr><td>4 PLC</td><td>±</td></tr> <tr><td>ANGLES</td><td>±</td></tr> </table>		0 PLC	±	1 PLC	±	2 PLC	±	3 PLC	±	4 PLC	±	ANGLES	±	NAME: DDR1 & DDR2 SODIMM SOCKET		PRODUCT SPEC: 108-5701			STANDARD PROFILE REVERSE TYPE (NEW LATCH TYPE)	
0 PLC	±																			
1 PLC	±																			
2 PLC	±																			
3 PLC	±																			
4 PLC	±																			
ANGLES	±																			
MATERIAL FINISH		APPLICATION SPEC: 108-5701		WEIGHT: 4.7g		SIZE: A3 00779 CAGE CODE: 1473150 DRAWING NO: 1473150														
CUSTOMER DRAWING		SCALE: 2:1		SHEET: 1 OF 4		REV: L														

4

3

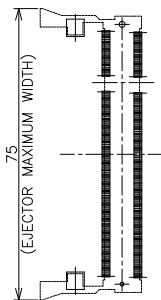
2

1

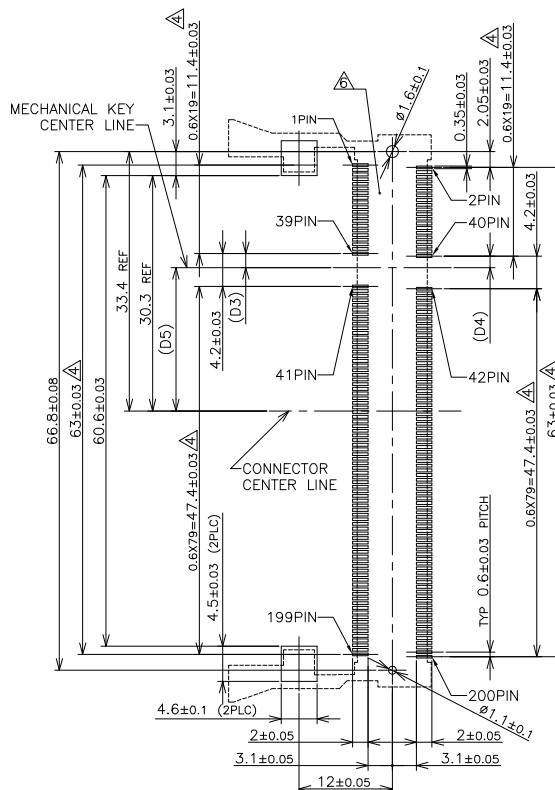
THIS DRAWING IS UNPUBLISHED. RELEASED FOR PUBLICATION OCT. 2001. COPYRIGHT 2001 BY TYCO ELECTRONICS CORPORATION. ALL RIGHTS RESERVED.

LOC	DIST	REVISIONS					
J		P	LTR	DESCRIPTION	DATE	DWN	APVD
		-	-	SEE SHEET 1	-	-	-

REFERENCE P.C.BOARD PATTERN LAYOUT (CONNECTOR MOUNTING SIDE)



REAL SIZE (SCALE 1:1)



1.8V	17.55	2.4	2.7
2.5V	18.45	1.5	1.8
POWER SUPPLY	D5	D4	D3

THIS DRAWING IS A CONTROLLED DOCUMENT.		DWN	Tyco Electronics AMP K.K. Kawasaki, Japan	
DIMENSIONS:	TOLERANCES UNLESS OTHERWISE SPECIFIED:	CHK	NAME	
MM	0 PLC ±	APVD	DDR1 & DDR2 SODIMM SOCKET	
	1 PLC ±	PRODUCT SPEC	0.6mm PITCH 200POS	
	2 PLC ±	APPLICATION SPEC	STANDARD PROFILE REVERSE TYPE (NEW LATCH TYPE)	
	3 PLC ±	WEIGHT	SIZE	CAGE CODE
	4 PLC ±		A3	00779
MATERIAL	FINISH		DRAWING NO	RESTRICTED TO
			C-1473150	
		CUSTOMER DRAWING	SCALE	SHEET
			2:1	2 OF 4
				REV L

4

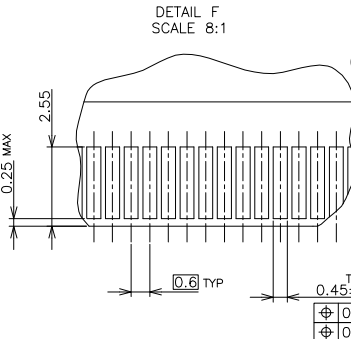
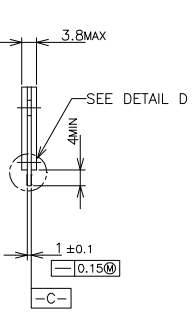
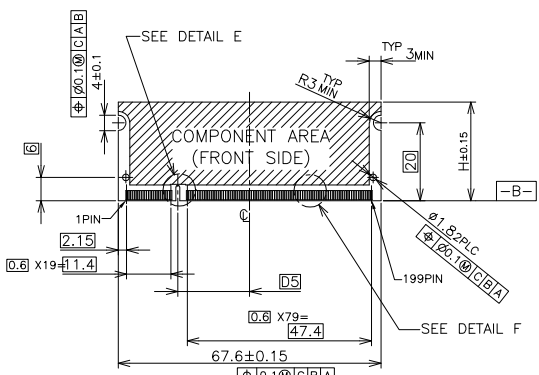
3

2

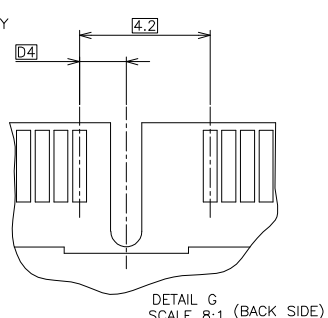
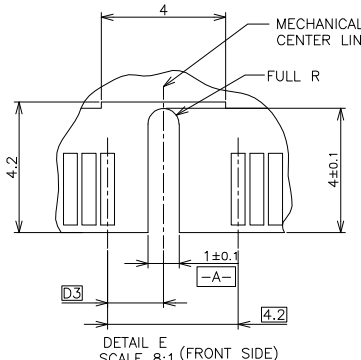
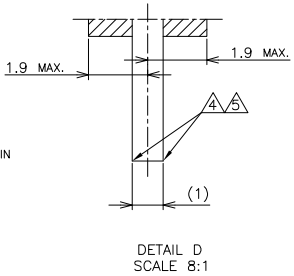
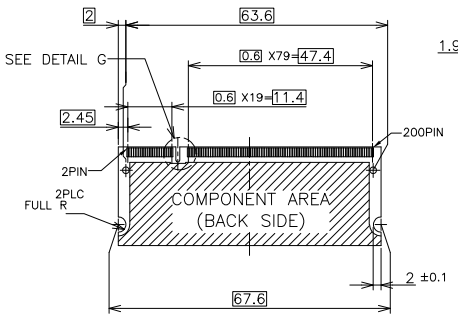
1

THIS DRAWING IS UNPUBLISHED. RELEASED FOR PUBLICATION OCT. 2001.
 © COPYRIGHT 2001 BY TYCO ELECTRONICS CORPORATION. ALL RIGHTS RESERVED.

LOC	DIST	REVISIONS				
P	LTR	DESCRIPTION	DATE	DWN	APVD	
-	-	SEE SHEET 1	-	-	-	



- (APPLIED TO SHEET 3)
1. TOLERANCES ON ALL DIMENSIONS ±0.15 UNLESS OTHERWISE SPECIFIED.
 2. P.C. BOARD THICKNESS APPLIES ACROSS TABS AND INCLUDES PLATING AND/OR METALIZATION.
 3. FINISH OF PAD : GOLD PLATING 0.00076 MIN. OVER Ni PLATING 0.002MIN.
- NO BURR
- CHAMFER 0.25 MAX x 45° IF EXIST.



RECOMMENDED MATING P.C.B CONFIGURATION

31.75	1.8V	17.55	2.4	2.7
25.4	2.5V	18.45	1.5	1.8
H	POWER SUPPLY	D5	D4	D3

THIS DRAWING IS A CONTROLLED DOCUMENT.

DIMENSIONS:	TOLERANCES UNLESS OTHERWISE SPECIFIED:	DWN	CHK	APVD	PRODUCT SPEC	APPLICATION SPEC	WEIGHT	CUSTOMER DRAWING
MM	0 PLC ± 1 PLC ± 2 PLC ± 3 PLC ± 4 PLC ± ANGLES ±							

NAME: **tyco Electronics** Tyco Electronics AMP K.K. Kawasaki, Japan

NAME: DDR1 & DDR2 SODIMM SOCKET
0.6mm PITCH 200POS
STANDARD PROFILE REVERSE TYPE (NEW LATCH TYPE)

SIZE: A3 CAGE CODE: 00779 DRAWING NO: 1473150 RESTRICTED TO: -

SCALE: 2:1 SHEET: 3 OF 4 REV: L

4

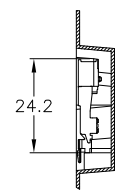
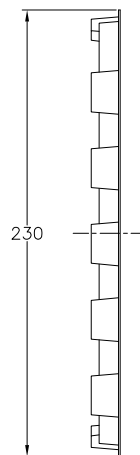
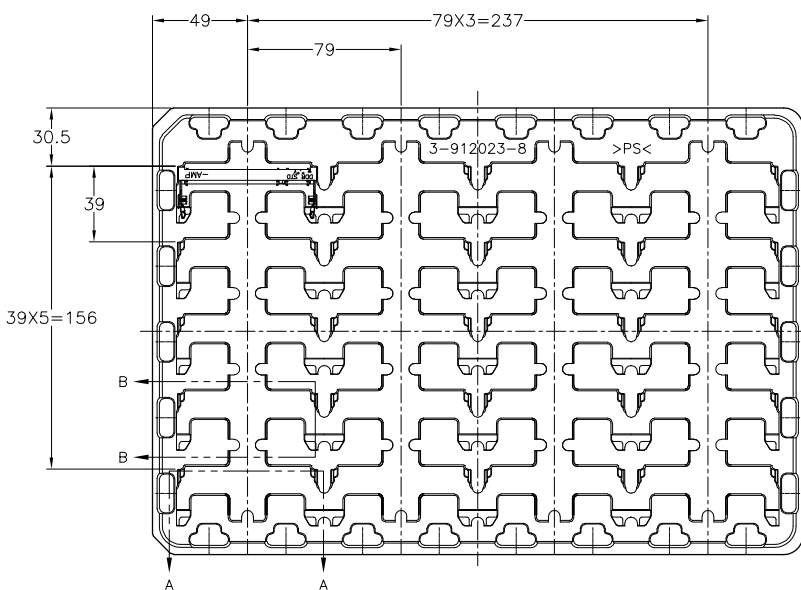
3

2

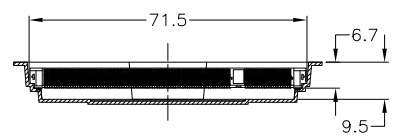
1

THIS DRAWING IS UNPUBLISHED. RELEASED FOR PUBLICATION OCT. 2001.
 © COPYRIGHT 2001 BY TYCO ELECTRONICS CORPORATION. ALL RIGHTS RESERVED.

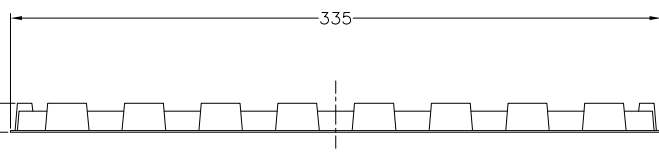
LOC	DIST	REVISIONS				
P	LTR	DESCRIPTION	DATE	DWN	APVD	
-	-	SEE SHEET 1	-	-	-	



B-B
SCALE 2:1



A-A
SCALE 2:1
(180DEG. ROTATE)



DDR2	20EA/TRAY	1-1473150-4
DDR2	20EA/TRAY	1473150-4
DDR1	20EA/TRAY	1473150-1
REMARK	QTY	P/N

- (APPLIED TO SHEET 4)
1. THE DIRECTION OF EACH CONNECTOR ON A TRAY IS REFERRED TO THIS DRAWING.
 2. GENERAL TOLERANCE: ± 0.5

THIS DRAWING IS A CONTROLLED DOCUMENT.		DWN	Tyco Electronics AMP K.K. Kawasaki, Japan	
DIMENSIONS: MM	TOLERANCES UNLESS OTHERWISE SPECIFIED:	CHK	NAME	
0 PLC \pm	1 PLC \pm	APVD	DDR1 & DDR2 SODIMM SOCKET	
2 PLC \pm	3 PLC \pm	PRODUCT SPEC	0.6mm PITCH 200POS	
4 PLC \pm	4 PLC \pm	APPLICATION SPEC	STANDARD PROFILE REVERSE TYPE (NEW LATCH TYPE)	
MATERIAL	FINISH	WEIGHT	SIZE	CAGE CODE
			A3	00779
			DRAWING NO	RESTRICTED TO
			C-1473150	
CUSTOMER DRAWING		SCALE	SHEET	REV
		1:2	4 OF 4	L