

4

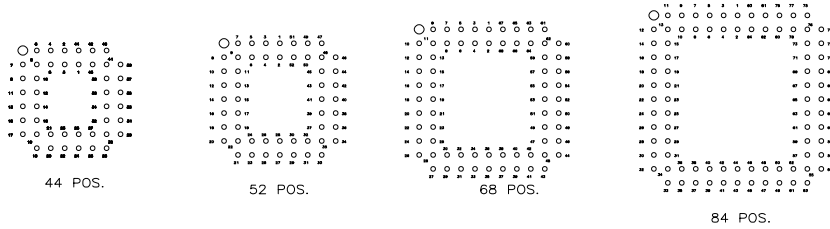
3

2

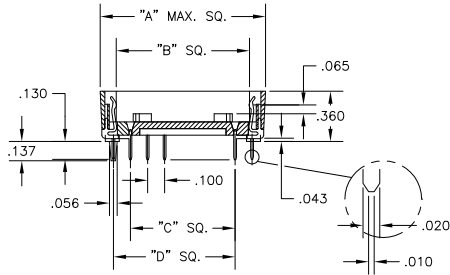
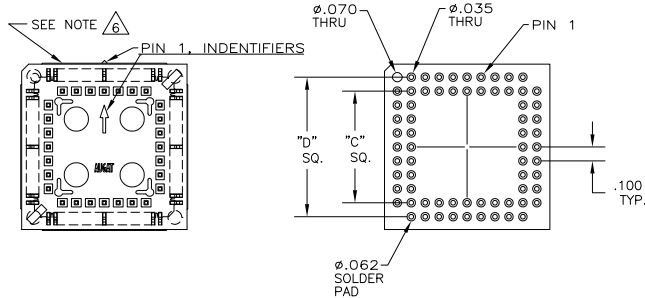
1

THIS DRAWING IS UNPUBLISHED. RELEASED FOR PUBLICATION
 BY TYCO ELECTRONICS CORPORATION. ALL RIGHTS RESERVED.

LOC	DIST	REVISIONS		
P	LTR	DESCRIPTION	DATE	BY
AG	86			
C		ECO-05-010524	19JUL2006	RB DR

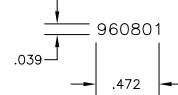


RECOMMENDED HOLE LAYOUT
 TOLERANCE: +.002 UNLESS OTHERWISE NOTED



NOTES:

1. MATERIALS:
 CONTACT: COPPER ALLOY, .000180-.000340 TIN PLATE OVER .000050 MIN NICKEL.
 INSULATOR: PPS, BROWN, UL 94V-0
2. ELECTRICAL:
 CURRENT CAPACITY: 1 AMP.
 LOW LEVEL CONTACT RESISTANCE: 30 MILLIOHMS MAX.
 CAPACITANCE (CONTACT TO CONTACT): 1 pF MAX.
 @ 1kHz, MIL-STD-202, METHOD 305.
 DIELECTRIC WITHSTANDING VOLTAGE: 600 VAC PER MIL-STD-1344, METHOD 3001.1.
3. MECHANICAL:
 FORCE, INSERTION: 310g MAX. PER LINE.
 FORCE, WITHDRAWAL: 31g MIN. PER LINE.
 FORCE, NORMAL: 200g MIN. PER LINE.
4. ENVIRONMENTAL:
 OPERATING TEMPERATURE: -67°F TO +221°F
 (-55°C TO +105°C.)
 STORAGE TEMPERATURE: -67°F TO +221°F
 (-55°C TO +105°C.)
5. INTERPRET DRAWING PER ASME Y14.5M-1994.
6. DATE CODE (PER BELOW) TO BE LASER CODED AND CENTERED ON THIS SURFACE.



PART NO.	POS.	DIM. "A"	DIM. "B"	DIM. "C"	DIM. "D"
1571541-1	44	.890	.660	.500	.700
1571541-2	52	.990	.760	.600	.800
1571541-3	68	1.190	.960	.800	1.000
1571541-4	84	1.390	1.160	1.000	1.200

THIS DRAWING IS A CONTROLLED DOCUMENT.		DR: D. MURREN 28AUG2003 OK: K. WRIGHT 24APR03 APPD: K. WRIGHT 24APR03 NAME:	Tyco Electronics Corporation Harleburg, Pa 17105-3808
DIMENSIONS: INCHES 0 PLG ± .005 1 PLG ± .005 2 PLG ± .010 3 PLG ± .010 4 PLG ± .010 ANGLES ± .1° FINISH	TOLERANCES UNLESS OTHERWISE SPECIFIED: .005 .010 .015 .020 .030 .040 .050 .060 .070 .080 .090 .100 .120 .150 .200 .250 .300 .375 .450 .500 .600 .750 .875 1.000 1.250 1.500 2.000 2.500 3.000 4.000 5.000 6.000 8.000 10.000	APPLICATION SPEC: WEIGHT: CUSTOMER DRAWING	OUTLINE DRAWING PCS SOCKET SIZE: A2 CASE CODE: 00779 DRAWING NO: C=1571541 RESTRICTED TO: - SCALE: 2:1 SHEET: 1 of 1 REV: C

1571541

A