

4

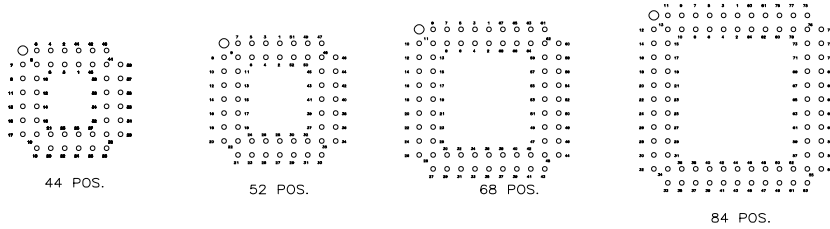
3

2

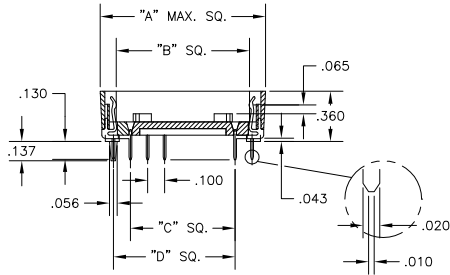
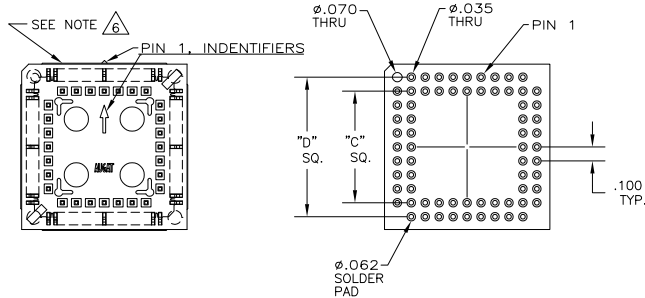
1

THIS DRAWING IS UNPUBLISHED. RELEASED FOR PUBLICATION
 BY TYCO ELECTRONICS CORPORATION. ALL RIGHTS RESERVED.

LOC	DIST	REVISIONS		
P	LT	DESCRIPTION	DATE	BY
AG	86			
C		ECO-05-010524	19JUL2006	RB DR

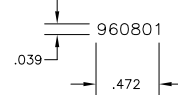


RECOMMENDED HOLE LAYOUT
 TOLERANCE: +.002 UNLESS OTHERWISE NOTED



NOTES:

1. MATERIALS:
 CONTACT: COPPER ALLOY, .000180-.000340 TIN PLATE OVER .000050 MIN NICKEL.
 INSULATOR: PPS, BROWN, UL 94V-0
2. ELECTRICAL:
 CURRENT CAPACITY: 1 AMP.
 LOW LEVEL CONTACT RESISTANCE: 30 MILLIOHMS MAX.
 CAPACITANCE (CONTACT TO CONTACT): 1 pF MAX.
 @ 1kHz, MIL-STD-202, METHOD 305.
 DIELECTRIC WITHSTANDING VOLTAGE: 600 VAC PER MIL-STD-1344, METHOD 3001.1.
3. MECHANICAL:
 FORCE, INSERTION: 310g MAX. PER LINE.
 FORCE, WITHDRAWAL: 31g MIN. PER LINE.
 FORCE, NORMAL: 200g MIN. PER LINE.
4. ENVIRONMENTAL:
 OPERATING TEMPERATURE: -67°F TO +221°F
 (-55°C TO +105°C.)
 STORAGE TEMPERATURE: -67°F TO +221°F
 (-55°C TO +105°C.)
5. INTERPRET DRAWING PER ASME Y14.5M-1994.
6. DATE CODE (PER BELOW) TO BE LASER CODED AND CENTERED ON THIS SURFACE.



PART NO.	POS.	DIM. "A"	DIM. "B"	DIM. "C"	DIM. "D"
1571541-1	44	.890	.660	.500	.700
1571541-2	52	.990	.760	.600	.800
1571541-3	68	1.190	.960	.800	1.000
1571541-4	84	1.390	1.160	1.000	1.200

THIS DRAWING IS A CONTROLLED DOCUMENT.		DR: D. MURREN 28AUG2003 OK: K. WRIGHT 24APR03 APPD: K. WRIGHT 24APR03 NAME:	Tyco Electronics Corporation Harleburg, Pa 17105-3808
DIMENSIONS: INCHES 0 PLG ± .005 1 PLG ± .005 2 PLG ± .010 3 PLG ± .010 4 PLG ± .010 ANGLES ± .1° FINISH:	TOLERANCES UNLESS OTHERWISE SPECIFIED: DIMENSIONS ± .005 DIMENSIONS ± .010 DIMENSIONS ± .015 DIMENSIONS ± .020 DIMENSIONS ± .025 DIMENSIONS ± .030 DIMENSIONS ± .040 DIMENSIONS ± .050 DIMENSIONS ± .060 DIMENSIONS ± .070 DIMENSIONS ± .080 DIMENSIONS ± .090 DIMENSIONS ± .100	APPLICATION SPEC: WEIGHT: CUSTOMER DRAWING	OUTLINE DRAWING PCS SOCKET SIZE: A2 CASE CODE: 00779 DRAWING NO: C=1571541 RESTRICTED TO: - SCALE: 2:1 SHEET 1 OF 1 REV C