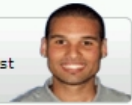


## 5822030-3 Product Details

### Have a Question?

Chat with a Product Information Specialist



5822030-3

TE Internal Number: 5822030-3

[Active](#)

### Memory Sockets

[Always EU RoHS/ELV Compliant \(Statement of Compliance\)](#)

#### Product Highlights:

- Socket Type = Memory Card
- Socket Style = SIMM
- Tin Contact Plating, Mating Area, Material
- 72 Positions
- 1.27 mm Centerline

[View all Features](#)

[Add to My Part List](#)
[Request Sample](#)
[Find Similar Products](#)
[Buy Product](#)

### Quick Links

- ▶ [Check Pricing & Availability](#)
- ▶ [Search for Tooling](#)
- ▶ [Product Feature Selector](#)
- ▶ [Contact Us About This Product](#)

### Documentation & Additional Information

Documents are temporarily unavailable. We are working hard to correct the problem. Please try again later.

#### Additional Information:

- [Product Line Information](#)

#### Additional Product Images:

- [Product Photo](#)

#### Related Products:

- [Tooling](#)

### Product Features (Please use the Product Drawing for all design activity)

#### Product Type Features:

- [Socket Style](#) = SIMM
- PCB Mount Style = Through Hole
- [Module Orientation](#) = Vertical
- Proprietary Name = MICRO-EDGE
- Polarization = Left

#### Mechanical Attachment:

- [Center Retention Hole Diameter \(mm \[in\]\)](#) = 2.45 [0.096]

#### Termination Related Features:

- [Termination Post Length \(mm \[in\]\)](#) = 3.05 [0.120], 3.66 [0.144]
- Solder Tail Contact Plating = Tin over Nickel

#### Body Related Features:

- Socket Type = Memory Card
- [Number of Positions](#) = 72
- [Centerline \(mm \[in\]\)](#) = 1.27 [0.050]
- [Number of Rows](#) = Single
- [Ejector Location](#) = None
- Center Post = With
- Latch Material = Brass
- Latch Plating = Nickel
- Mount Type = Printed Circuit Board

#### Contact Related Features:

- Contact Plating, Mating Area, Material = Tin
- Contact Base Material = Phosphor Bronze
- [Retention Post\(s\) Location](#) = Center

#### Housing Related Features:

- Housing Material = Liquid Crystal Polymer (LCP)
- UL Flammability Rating = UL 94V-0

#### Configuration Related Features:

- [Insertion Style](#) = Cam-In
- [Center Key \(mm \[in\]\)](#) = None

#### Industry Standards:

- [RoHS/ELV Compliance](#) = RoHS compliant, ELV compliant
- [Lead Free Solder Processes](#) = Wave solder capable to 240°C
- RoHS/ELV Compliance History = Always was RoHS compliant

#### Packaging Related Features:

- Packaging Method = Tube

#### Other:

- Brand = AMP



### Corporate Information

[Who We Are](#)  
[Investors](#)  
[News Room](#)  
[Supplier Portal](#)  
[Careers](#)

### Quick Links

[Check Distributor Inventory](#)  
[Cross Reference](#)  
[Find Documents & Drawings](#)  
[Product Compliance Support Center](#)  
[Site Map](#)

### Customer Support

[Email or Chat with Us](#)  
[Find a Phone Number](#)  
[Search Knowledge Base](#)  
[Manage Your Account](#)

### Sign up for our eNewsletter

Enter your email address

Follow us on: