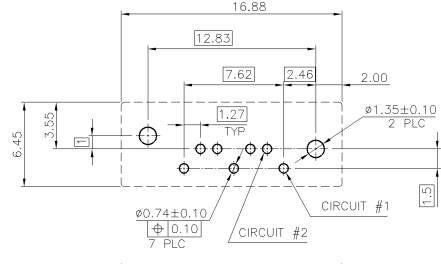
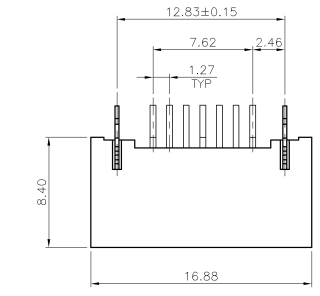
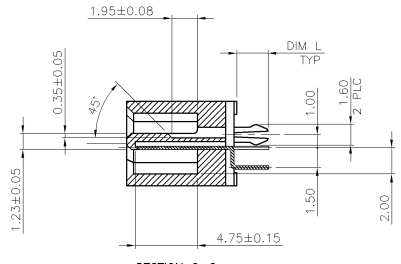
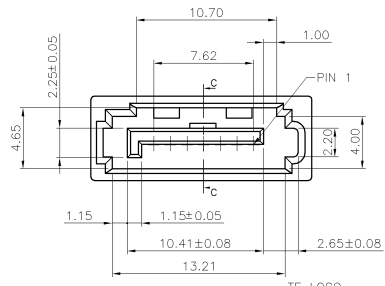


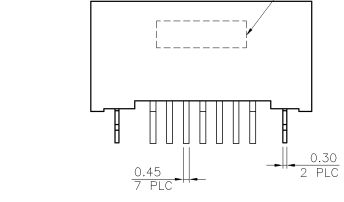
NUMBER C-1775058
METRIC
3RD ANGLE PROJECTION



(THICKNESS: 1.2, TOLERANCE: ±0.05)
RECOMMENDED PCB LAYOUT



SECTION C-C



- NOTES:
- MATERIAL:
HOUSING: PA6T UL 94V-0, COLOR: (SEE TABLE)
CONTACT: BRASS.
PEG: BRASS.
 - FINISH:
CONTACT: GOLD (SEE TABLE) PLATING ON CONTACT AREA 100μ² MIN. MATTE-TIN PLATING ON SOLDERTAILS 50μ² MIN. NICKEL UNDERPLATING OVER ALL.
PEG: 100μ² MIN. TIN PLATING ON SOLDERTAILS 50μ² MIN. NICKEL UNDERPLATING OVER ALL.
 - WAVE SOLDER CAPABLE TO 265°C AS PER TE SPEC. 109-202, CONDITION B.
 - NO DATE CODE ON THE PRODUCT.

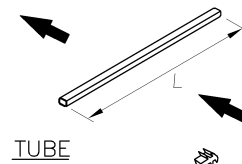
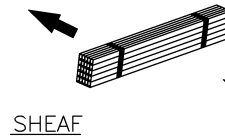
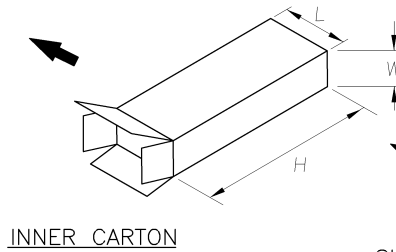
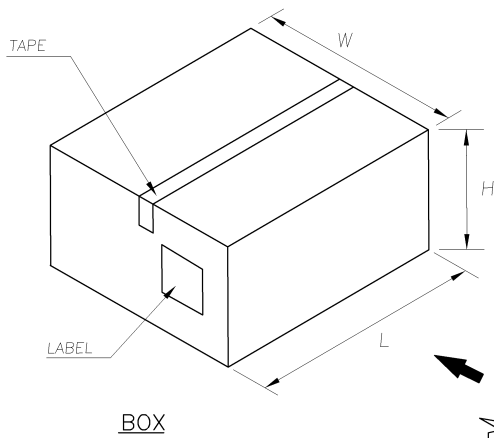
2.05	DARK BLUE (293C)	G/F	4-1775058-4
	WHITE (COOL GRAY 1C)	G/F	4-1775058-3
	BLACK	G/F	4-1775058-2
	DIM L	HOUSING COLOR	MIN. GOLD THICKNESS

3.30	YELLOW (1235C)	15μ ²	4-1775058-1
		G/F	4-1775058-0
	LIGHT BLUE (284C)	15μ ²	3-1775058-9
		G/F	3-1775058-8
	WHITE (7506U)	15μ ²	3-1775058-7
		G/F	3-1775058-6
2.05	RED (208C)	30μ ²	3-1775058-5
		15μ ²	3-1775058-4
		G/F	3-1775058-3
3.30	GREEN (339C)	30μ ²	3-1775058-2
		15μ ²	3-1775058-1
		G/F	3-1775058-0
	DARKEST BLUE (661C)	30μ ²	2-1775058-9
		15μ ²	2-1775058-8
		G/F	2-1775058-7
	BLACK	30μ ²	2-1775058-6
		15μ ²	2-1775058-5
		G/F	2-1775058-4
2.40	GRAY (422U)	30μ ²	2-1775058-3
		15μ ²	2-1775058-2
		G/F	2-1775058-1
	DARKEST BLUE (661C)	30μ ²	1-1775058-9
		15μ ²	1-1775058-8
		G/F	1-1775058-7
	ORANGE (157C)	30μ ²	1-1775058-6
		15μ ²	1-1775058-5
		G/F	1-1775058-4
	LIGHT BLUE (284C)	30μ ²	1-1775058-3
		15μ ²	1-1775058-2
		G/F	1-1775058-1
	DARK BLUE (293C)	30μ ²	1775058-9
		G/F	1775058-7
		G/F	1775058-6
	WHITE (COOL GRAY 1C)	30μ ²	1775058-4
		15μ ²	1775058-5
		G/F	1775058-3
	BLACK	30μ ²	1775058-2
		15μ ²	1775058-1
		G/F	1775058-0

TOLERANCES UNLESS OTHERWISE SPECIFIED:		DWN		A. WU	
0 PLC	±	CHK		05-SEP-2008	
1 PLC	±0.3			S. CHIEN	
2 PLC	±0.25			05-SEP-2008	
3 PLC	±0.2			NAME	
ANGLES	±3°			Tyco Electronics Corporation	
MATERIAL		APVD		Tyco Electronics Corporation	
SEE NOTE		W. KODAMA		Taipei, Taiwan	
		05-SEP-2008		SERIAL ATA CONNECTOR, 7 PIN, VERTICAL HEADER, B TYPE.	
FINISH		PRODUCT SPEC		LOC	
SEE NOTE		108-57469		SIZE	
		QUALIFICATION TEST REPORT		DRAWING NO	
		501-57539		C-1775058	
		WEIGHT		REV	
		1 GRAM		C	
		SCALE		SHEET	
		--		1 OF 2	

PRINT DIST DW
THIS INFORMATION IS CONFIDENTIAL AND IS DECIDED TO YOU ON CONDITION THAT NO FURTHER DISCLOSURE IS MADE BY YOU TO OTHER THAN AMP PERSONNEL WITHOUT DIMENSIONS IN MILLIMETERS. DO NOT SCALE PRINT.

C	ADD/REVISED DIM	ECR-09-001599	AW/SC	22JAN 2009
B	ADD PART NUMBERS	ECR-08-028152	AW/SC	16OCT 2008
LTR	REVISION RECORD	ECN	DWN/CHK	DATE



- NOTE:
- DIMENSION:
 TUBE: L= 473, W= 13.4, H= 8.1
 INNER CARTON: L= 485, W= 72, H= 86
 CARTON: L= 500, W= 187, H= 169
 - QUANTITY:
 26 PCS/TUBE
 45 TUBES/SHEAF
 1 SHEAFS/INNER CARTON
 4 INNER CARTONS/CARTON
 4680 PCS/BOX
 - WEIGHT:
 N/W: 4.68 KG
 G/W: 6.68 KG

THIS INFORMATION IS CONFIDENTIAL AND IS DECLASSIFIED TO YOU ON CONDITION THAT
 NO FURTHER DISCLOSURE IS MADE BY YOU TO OTHER THAN AMP PERSONNEL WITHOUT
 DIMENSIONS IN MILLIMETERS. DO NOT SCALE PRINT.

PRINT DIST
 DW

SEE SHEET 1.	ECN	DWN/CHK	DATE
LTR	REVISION RECORD		

TOLERANCES UNLESS OTHERWISE SPECIFIED: 0 PLC ± 1 PLC ± 2 PLC ± 3 PLC ± ANGLES ±	DWN A. WU 05-SEP-2008 CHK S. CHIEN 05-SEP-2008	Tyco Electronics Tyco Electronics Corporation Taipei, Taiwan	
MATERIAL -	APVD W. KODAMA 05-SEP-2008	NAME SERIAL ATA CONNECTOR, 7 PIN, VERTICAL HEADER, B TYPE.	
FINISH -	APPLICATION SPEC -	LOC DW	SIZE A ₃
	WEIGHT -	DRAWING NO C-1775058	REV C
		SCALE --	SHEET 2 OF 2