

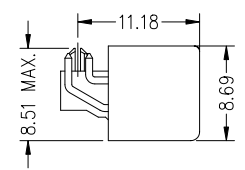
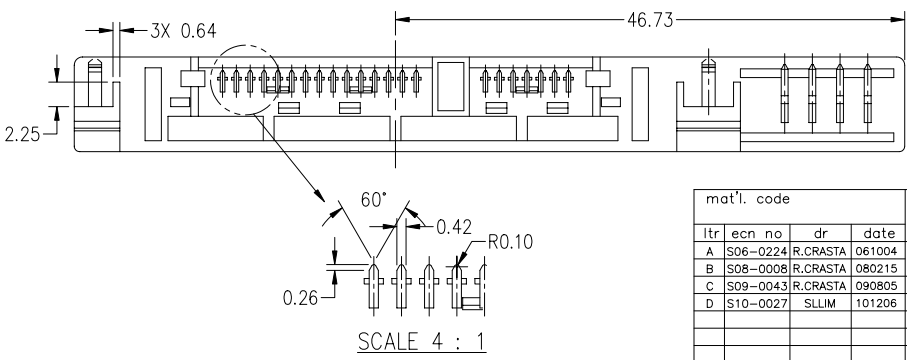
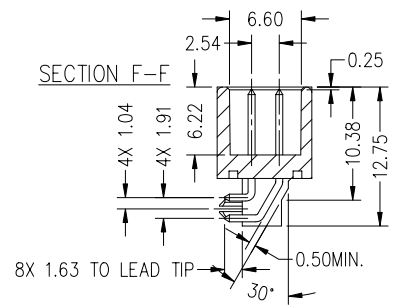
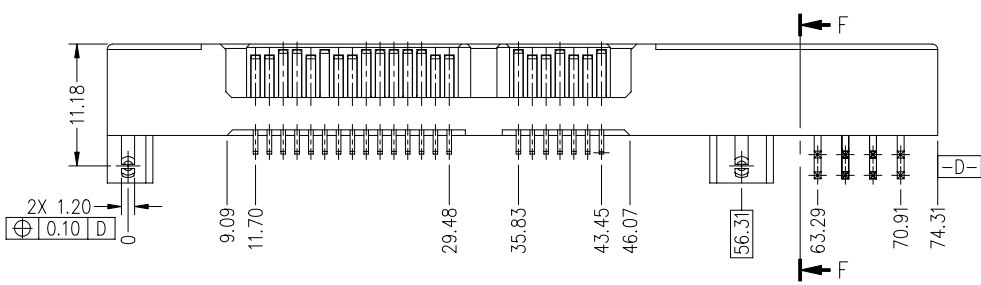
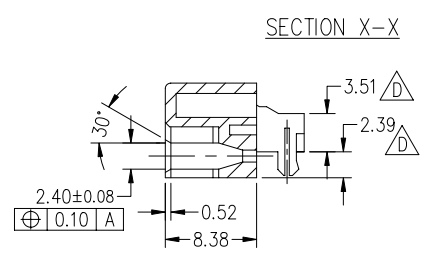
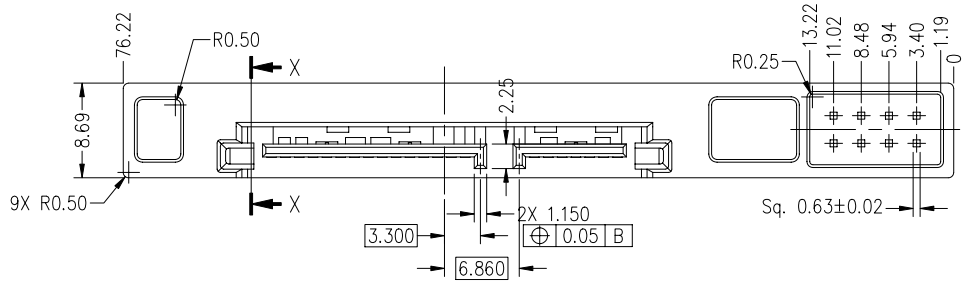
FCI CONFIDENTIAL

FCI

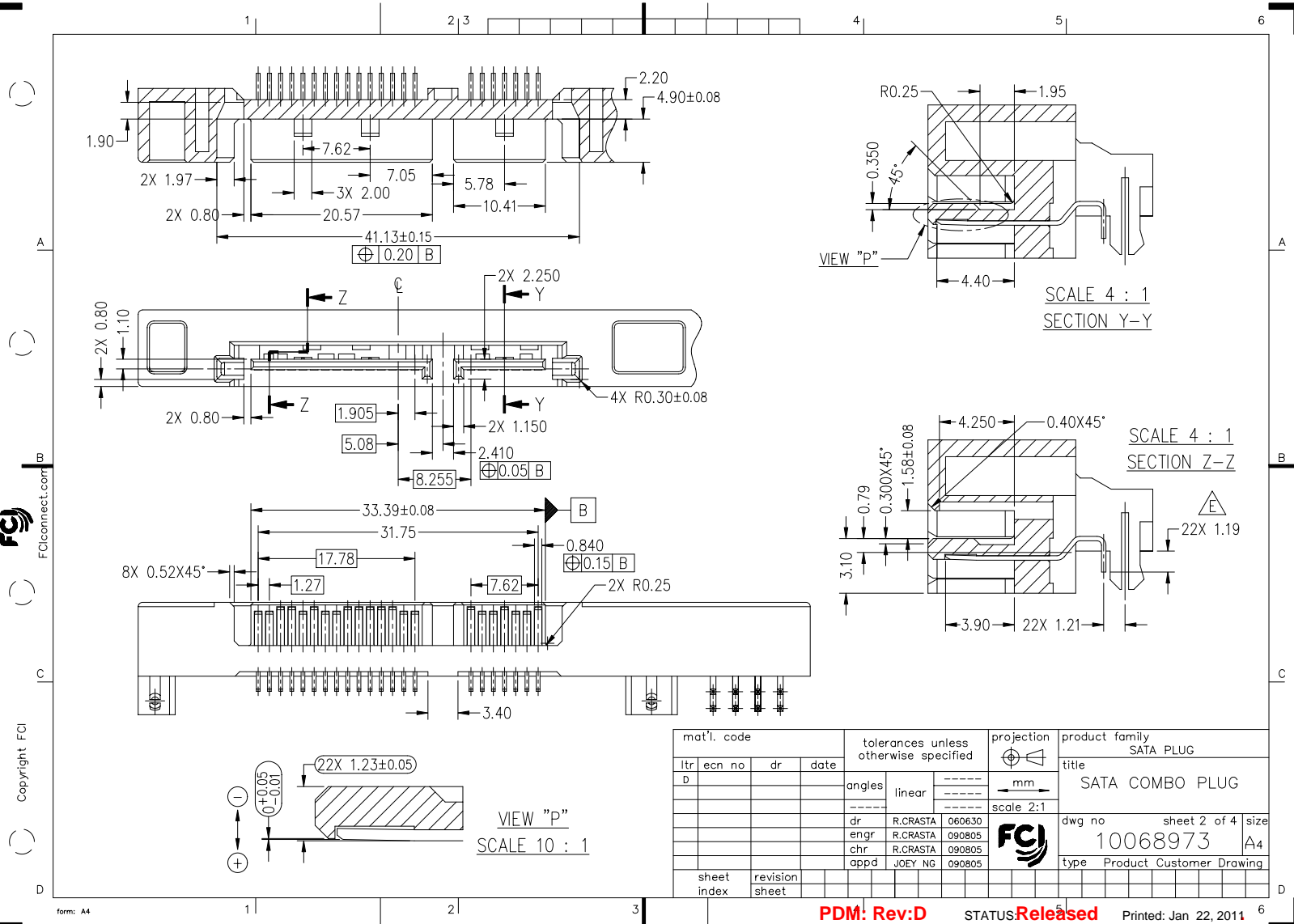
FCIconnect.com

This document is the property of FCI and contains CONFIDENTIAL and PROPRIETARY information. No part of this document may be used in any way or disclosed to others without the written consent of FCI.

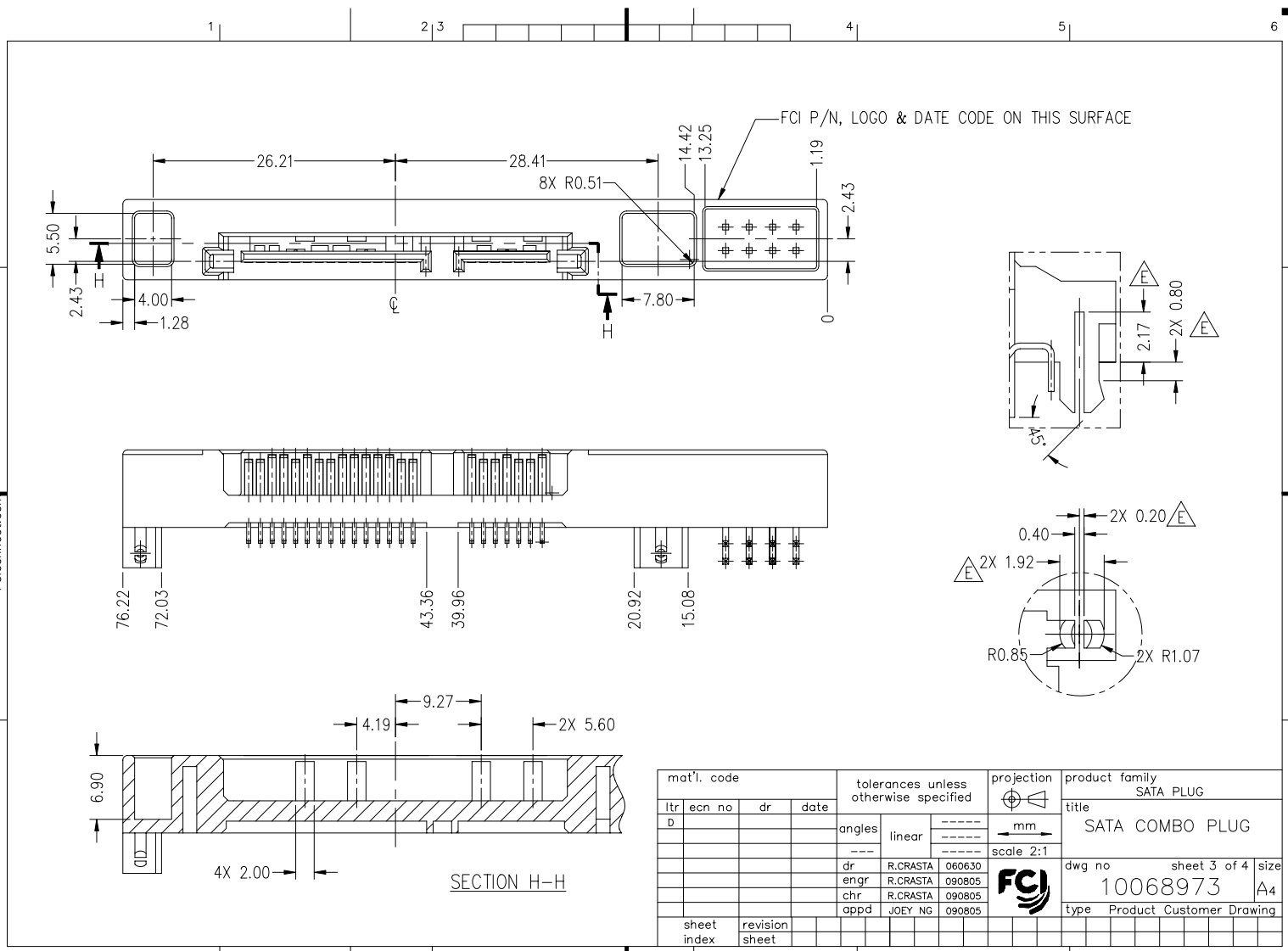
PRODUCT NO
SEE TABLE



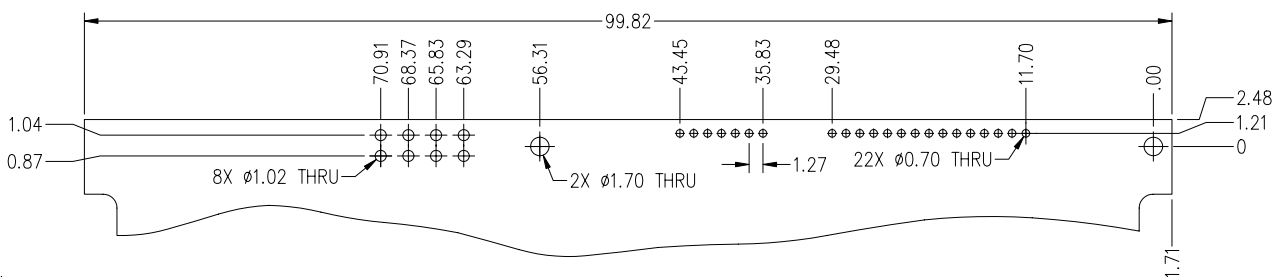
mat'l. code				tolerances unless otherwise specified			projection	product family		
ltr	ecr no	dr	date	angles	linear	±.25 ±.13 ±.050	mm	SATA PLUG		
A	S06-0224	R.CRASTA	061004					SATA COMBO PLUG		
B	S08-0008	R.CRASTA	080215							
C	S09-0043	R.CRASTA	090805	±3°						
D	S10-0027	SLLIM	101206	dr	R.CRASTA	060630	scale 2:1			
				enrg	R.CRASTA	090805		dwg no		
				chr	R.CRASTA	090805		10068973		
				appd	JOEY NG	090805		type Product Customer Drawing		
sheet index	revision sheet	D	D	D	D					
		1	2	3	4					



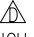
mat'l. code				tolerances unless otherwise specified		projection	product family		
ltr	ecr	no	dr	date	angles	linear	SATA PLUG		
D					-----	-----	title		
					dr	R.CRASTA	SATA COMBO PLUG		
					enr	R.CRASTA	dwg no		
					chr	R.CRASTA	10068973		
					appd	JOEY NG	type Product Customer Drawing		
sheet index		revision sheet					sheet 2 of 4 size		
							A4		



PRODUCT NO	WD P/N	REMARKS
10068973-001LF	2041-701090-000	LEAD FREE
10068973-002LF	2041-701090-000	ZYTEL HTN
10068973-003LF	2041-701090-000	LCP



NOTES :

- MATERIAL:
HOUSING: HIGH TEMP. PLASTIC (BLACK) UL 94V-0.
SATA TERMINAL : BRASS C2680-H THICKNESS 0.25MM
FINISH: 5u" MIN. AU FLASH OVER 50u" NICKEL.
SOLDER TAIL : 50u" MIN. TIN (100%) OVER 50u" MIN. NICKEL.
JUMPER PIN : PH. BRONZE OR BRASS.
FINISH (MATING AREA) : 4u" MIN. AU FLASH OVER 50u" NICKEL.
- PACKAGING: 90 PCS PER TRAY, 900 PCS PER BOX.
- THIS PRODUCT MEETS EUROPEAN UNION DIRECTIVES AND OTHER COUNTRY REGULATIONS AS DESCRIBED IN GS-22-008
- THIS HOUSING WILL WITHSTAND EXPOSURE TO 260°C TEMPERATURE FOR 10 SECONDS IN A CONVECTION, INFRA-RED OR VAPOR PHASE REFLOW OVEN.
- PRODUCT SPECIFICATIONS: GS-12-194.
- A  SYMBOL WILL BE NEXT TO ANY DIMENSION, VIEW OR NOTE WHICH HAS BEEN MODIFIED WITH THE CURRENT DRAWING REVISION.

mat'l. code				tolerances unless otherwise specified			projection	product family		
ltr	ecr	no	dr	date	angles	linear	mm	title		
D					---	---	mm	SATA COMBO PLUG		
					---	---	scale 2:1	dwg no		
					dr	R.CRASTA	060630	sheet 4 of 4		
					enr	R.CRASTA	090805	10068973		
					chr	R.CRASTA	090805	A4		
					appd	JOEY NG	090805	type Product Customer Drawing		
sheet index		revision sheet								

PDM: Rev:D

STATUS Released

Printed: Jan 22, 2011

6