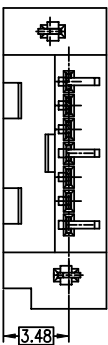
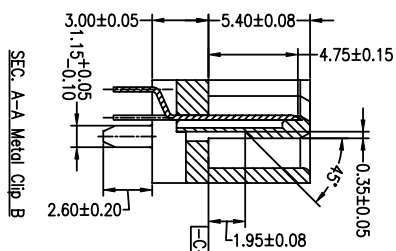
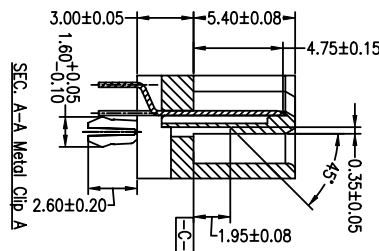
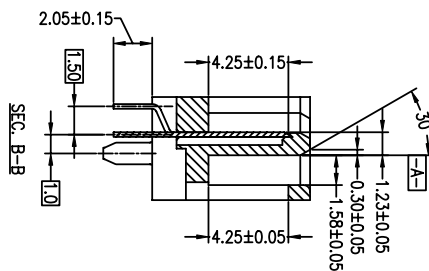
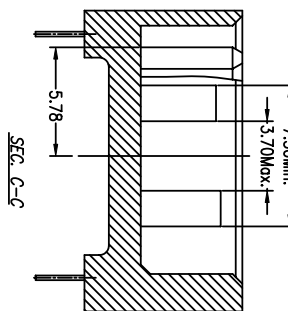
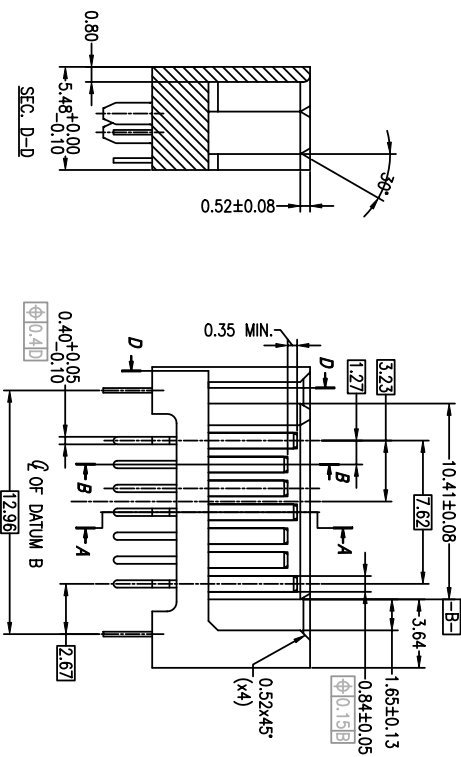
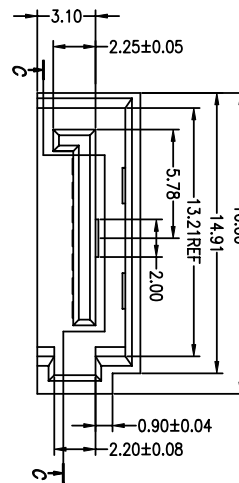




PRODUCT NO.10035690-XXX-3W

1 | 2



1 | 2

mat'l. code		tolerances unless otherwise specified		CUSTOMER COPY		FCI		title		code	
ltr	ecn no	dr	date	X ± 0.30		projection		S-ATA SIGNAL PLUG		code	
A	105-0213	W.L	09/09/05	.XX ± 0.20		MM		DIP VERTICAL TYPE ASSY		TWIN	
B	108-1033	S.Lin	02/29/08	.XXX ± 0.10		MM		product family		sheet	
				0° ± 2°		NA		SATA		1 of	
								size dng no			
								10035690			
sheet	revision	sheet	index					code code			
B	B	1	2								
B	B	2	3								
B	B	3									

ACAD

3 |

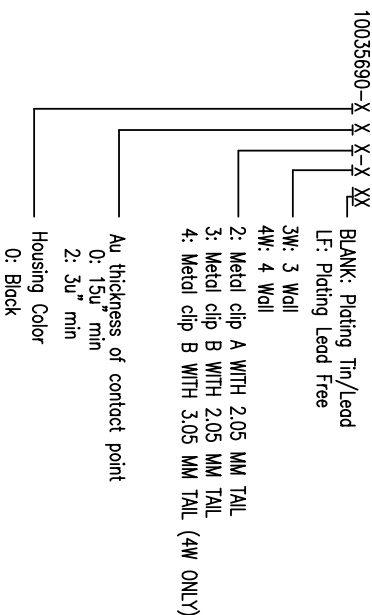
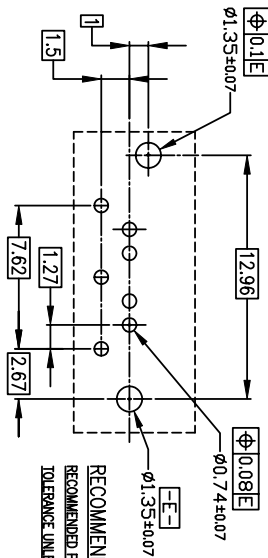
4

3 |

4



1 | 2



3 |

4

- NOTES :
- MATERIAL
 - HOUSING : HIGH TEMPERATURE THERMOPLASTIC UL94V-0
 - TERMINAL : COPPER ALLOY
 - HOLD DOWN : COPPER ALLOY
 - FINISH
 - TERMINAL : Au PLATING AT CONTACT POINT
100u" min Sn-Pb or PURE TIN PLATING AT SOLDER TAIL WITH NICKEL UNDERPLATE
 - HOLD DOWN : 100-200 u" Sn-Pb or PURE TIN PLATING.
 - P/N : 10035690-XXXXLF
THE HOUSING WILL WITHSTAND EXPOSURE TO 260 DEGREE C PEAK TEMPERATURE FOR 10 SECONDS IN A WAVE SOLDER APPLICATION WITH 1.6MM MINIMUM THICK CIRCUIT BOARD.
 - Packaging spec: GS-14-840.
 - Product Spec: GS-12-194.

1 | 2

mat'l. code		tolerances unless otherwise specified		CUSTOMER COPY		title	
ltr	ecn no	dr	date	linear	projection	product family	SATA
A	T05-0213	W.L	09/09/05	.XX ± 0.20	MM	S-ATA SIGNAL PLUG	DIP VERTICAL TYPE ASS'Y
B	T08-1033	S.Lin	02/29/08	.XXX ± 0.10	MM	10035690	3 of 3
sheet		revision	B	dr	Wade Liu	09/09/05	code
index		sheet	1	chr	Wade Liu	09/09/05	TWIN
			2	appr	Sterling Lin	09/09/05	sheet
			3				3 of

ACAD

3 |

4