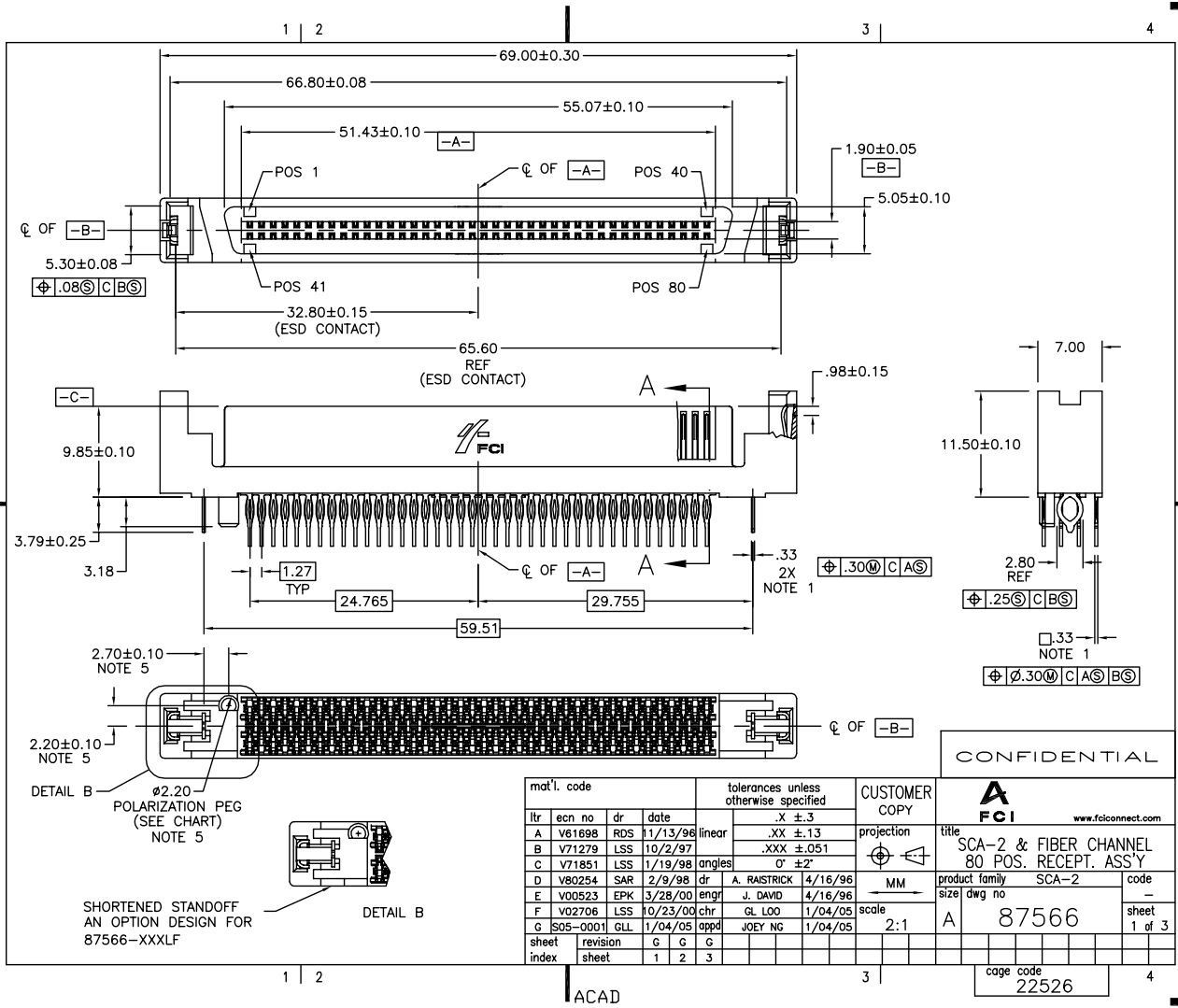


Tous droits strictement réservés. Reproduction ou communication à des tiers interdite sous quelque forme que ce soit sans autorisation écrite du propriétaire. Propriété de FCI. Droits de reproduction FCI.

All rights strictly reserved. Reproduction or issue to third parties in any form whatever is not permitted without written authority from the proprietor. Property of FCI. Copyright FCI.



| ltr | ecn no    | dr  | date     | linear | tolerances unless otherwise specified |
|-----|-----------|-----|----------|--------|---------------------------------------|
| A   | v81898    | RDS | 11/13/98 |        | .X ±.3                                |
| B   | v71279    | LSS | 10/2/97  |        | .XX ±.13                              |
| C   | v71851    | LSS | 1/19/98  | angles | .XXX ±.051                            |
| D   | v80254    | SAR | 2/9/98   | dr     | 0° ±2°                                |
| E   | v00523    | EPK | 3/28/00  | engr   | A. RAISTRICK 4/16/96                  |
| F   | v02706    | LSS | 10/23/00 | chr    | J. DAVID 4/16/96                      |
| G   | IS05-0001 | GLL | 1/04/05  | appd   | GL LOO 1/04/05                        |
|     |           |     |          |        | JOEY NG 1/04/05                       |

|               |            |    |       |
|---------------|------------|----|-------|
| CUSTOMER COPY | projection | MM | scale |
|               |            |    | 2:1   |

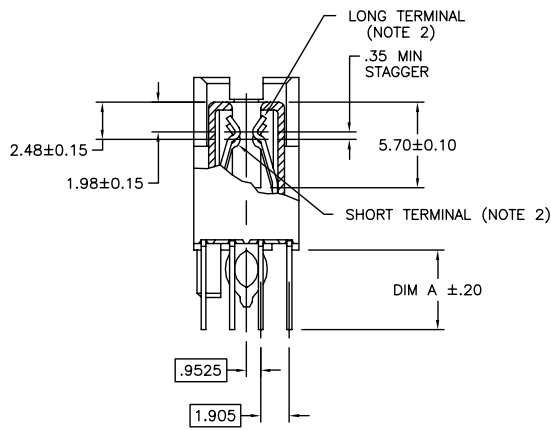
|  |              |              |  |
|--|--------------|--------------|--|
| CONFIDENTIAL                                     |              |              |  |
| www.fciconnect.com                               |              |              |  |
| title SCA-2 & FIBER CHANNEL 80 POS. RECEPT. ASSY |              |              |  |
| product family SCA-2                             |              | code -       |  |
| size A   | dwg no 87566 | sheet 1 of 3 |  |
| cage code 22526                                  |              |              |  |

|             |          |   |   |   |  |  |  |  |  |  |  |  |  |
|-------------|----------|---|---|---|--|--|--|--|--|--|--|--|--|
| sheet index | revision | G | G | G |  |  |  |  |  |  |  |  |  |
|             | sheet    | 1 | 2 | 3 |  |  |  |  |  |  |  |  |  |

Tous droits strictement réservés. Reproduction ou communication à des tiers sans autorisation écrite de FCI est formellement interdite. Propriété de FCI. Droits de reproduction FCI.



All rights strictly reserved. Reproduction or issue to third parties in any form or by any means without written authority from the proprietor. Property of FCI. Copyright FCI.



SECTION A-A

CONFIDENTIAL

|             |                |                                       |      |               |                      |                    |  |       |
|-------------|----------------|---------------------------------------|------|---------------|----------------------|--------------------|--|-------|
| mat'l. code |                | tolerances unless otherwise specified |      | CUSTOMER COPY |                      | www.fciconnect.com |  |       |
| ltr         | ecn no         | dr                                    | date | linear        | .X ±.3               | projection         | title  |       |
| G           |                |                                       |      |               | .XX ±.13             |                    | SCA-2 & FIBER CHANNEL<br>80 POS. RECEPT. ASS'Y |       |
|             |                |                                       |      | angles        | .XXX ±.051           |                    | product family                                 | SCA-2 |
|             |                |                                       |      |               | 0° ±2'               | MM                 | size   | code  |
|             |                |                                       |      | dr            | A. RAISTRICK 4/16/96 | scale              | 87566  | sheet |
|             |                |                                       |      | engr          | J. DAVID 4/16/96     | 3:1                |  | 2 of  |
|             |                |                                       |      | chr           | GL LOO 1/04/05       |                    |  |       |
|             |                |                                       |      | appd          | JOEY NG 1/04/05      |                    |  |       |
| sheet index | revision sheet |                                       |      |               |                      |                    | cage code                                      |       |
|             |                |                                       |      |               |                      |                    | 22526  |       |

ACAT

PDM: Rev:G

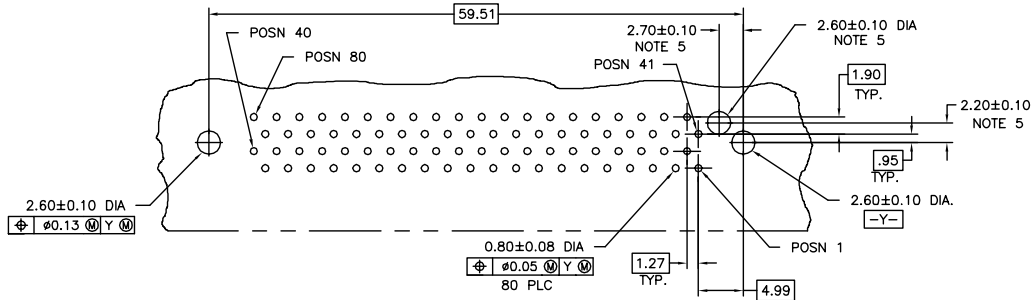
STATUS: Released

Printed: May 26, 2010

Tous droits strictement réservés. Reproduction ou communication e des tiers Interdite sous quelque forme que ce soit sans autorisation écrite du propriétaire. Propriete de c FCI. Droits de reproduction FCI.

All rights strictly reserved. Reproduction or issue to third parties in any form whatever is not permitted without written authority from the proprietor. Property of FCI. Copyright FCI.

| PRODUCT NO. | "A" DIM | POLARIZATION PEG | PLATING | RECOMMENDED P.C. BOARD THICKNESS          | PRODUCT NO. | PLATING | PRODUCT NO. | PLATING | PRODUCT NO. | PLATING |
|-------------|---------|------------------|---------|---|-------------|---------|-------------|---------|-------------|---------|
| 87566-001   | 3.79    | YES              | NOTE ④  | 2.36mm (0.093")<br>AND<br>3.18mm (0.125") | 87566-101   | NOTE ⑥  | 87566-001LF | NOTE ⑧  | 87566-101LF | NOTE ⑦  |
| -002        | 3.79    | NO               |         |   | -102        |         | -002LF      |         | -102LF      |         |
| -003        | 4.60    | YES              |         |   | -103        |         | -003LF      |         | -103LF      |         |
| 87566-004   | 4.60    | NO               |         |   | 87566-104   |         | 87566-004LF |         | 87566-104LF |         |



RECOMMENDED PC BOARD MOUNTING DIMENSIONS COMPONENT SIDE

NOTES :

- ① TRUE POSITION NOTES APPLY AT TERMINAL TIP.
- ② CONTACTS IN POSITIONS 2 THRU 35, 44 AND 47 THRU 74 ARE SHORT TERMINALS. CONTACTS IN POSITIONS 1, 36 THRU 43, 45, 46, AND 75 THRU 80 ARE LONG TERMINALS.
- ③ RAW MATERIALS: HOUSING: HTN, UL94V-0, COLOR: BLACK CONTACTS: PHOSPHOR-BRONZE
- ④ CONTACT PLATING: 30u" (0.76um) MIN. GXT PLATING OVER 50u" (1.27um) NICKLE UNDERPLATE IN CONTACT AREA. 20u" (0.5um) MIN. 60u" (1.5um) MAX TIN-LEAD PLATING OVER 50u" (1.27um) MIN. NICKLE UNDERPLATE IN P.C. BOARD LEG AREA. 50u" (1.27um) MIN. NICKLE UNDERPLATE OVER REMAINING AREA.
- ⑤ DIMENSIONS DO NOT APPLY TO CONNECTOR STYLES WITHOUT POLARIZATION PEG. (SEE CHART)
- ⑥ CONTACT PLATING: 30u" (0.76um) MIN GOLD PLATING OVER 50u" (1.27um) NICKLE UNDERPLATE IN CONTACT AREA. 20u" (0.5um) MIN-60u" (1.5um) MAX TIN-LEAD PLATING OVER 50u" (1.27um) MIN. NICKLE UNDERPLATE IN P.C. BOARD LEG AREA. 50u" (1.27um) MIN. NICKLE UNDERPLATE OVER REMAINING AREA.
- ⑦ CONTACT PLATING: 30u" (0.76um) GOLD PLATING OVER 50u" (1.27um) NICKLE UNDERPLATE IN CONTACT AREA. 20u" (0.5um) - 60u" (1.5um) TIN PLATING OVER 50u" (1.27um) - 100u" (2.54um) NICKEL UNDERPLATE IN P.C. BOARD LEG AREA. 50u" (1.27um) NICKEL UNDERPLATE OVER REMAINING AREA.
- ⑧ CONTACT PLATING: 30u" (0.76um) GXT PLATING OVER 50u" (1.27um) NICKLE UNDERPLATE IN CONTACT AREA. 20u" (0.5um) - 60u" (1.5um) TIN PLATING OVER 50u" (1.27um) - 100u" (2.54um) NICKEL UNDERPLATE IN P.C. BOARD LEG AREA. 50u" (1.27um) NICKEL UNDERPLATE OVER REMAINING AREA.
- ⑨ THE HOUSING WILL WITHSTAND EXPOSURE TO 260°C PEAK TEMPERATURE FOR 10 SECONDS IN A CONVECTION, INFRA RED VAPOR PHASE REFLOW OVEN.
- ⑩ THIS PRODUCT MEETS EUROPEAN UNION DIRECTIVES AND OTHER COUNTRY REGULATIONS AS DESCRIBED IN GS-22-008.

CONFIDENTIAL

|             |                |                                       |      |               |                      |                    |  |
|-------------|----------------|---------------------------------------|------|---------------|----------------------|--------------------|--|
| mat'l. code |                | tolerances unless otherwise specified |      | CUSTOMER COPY |                      | www.fciconnect.com |  |
| ltr         | ecn no         | dr                                    | date | linear        | .X ±.3               | projection         | title                                      |
| g           |                |                                       |      | angles        | .XX ±.13             |                    | SCA-2 & FIBER CHANNEL 80 POS. RECEPT. ASSY |
|             |                |                                       |      |               | .XXX ±.051           |                    | product family                             |
|             |                |                                       |      | dr            | 0 ±.2                | MM                 | code                                       |
|             |                |                                       |      | enrg          | A. RAISTRICK 4/16/96 | scale              | 87566                                      |
|             |                |                                       |      | chr           | J. DAVID 4/16/96     | 3:1                | sheet                                      |
|             |                |                                       |      | appd          | GL LOO 1/04/05       |                    | 3 of 3                                     |
|             |                |                                       |      |               | JOEY NG 1/04/05      |                    |  |
| sheet index | revision sheet |                                       |      |               |                      |                    | cage code                                  |
|             |                |                                       |      |               |                      |                    | 22526                                      |

ACAD

PDM: Rev:G

STATUS: Released

Printed: May 26, 2010