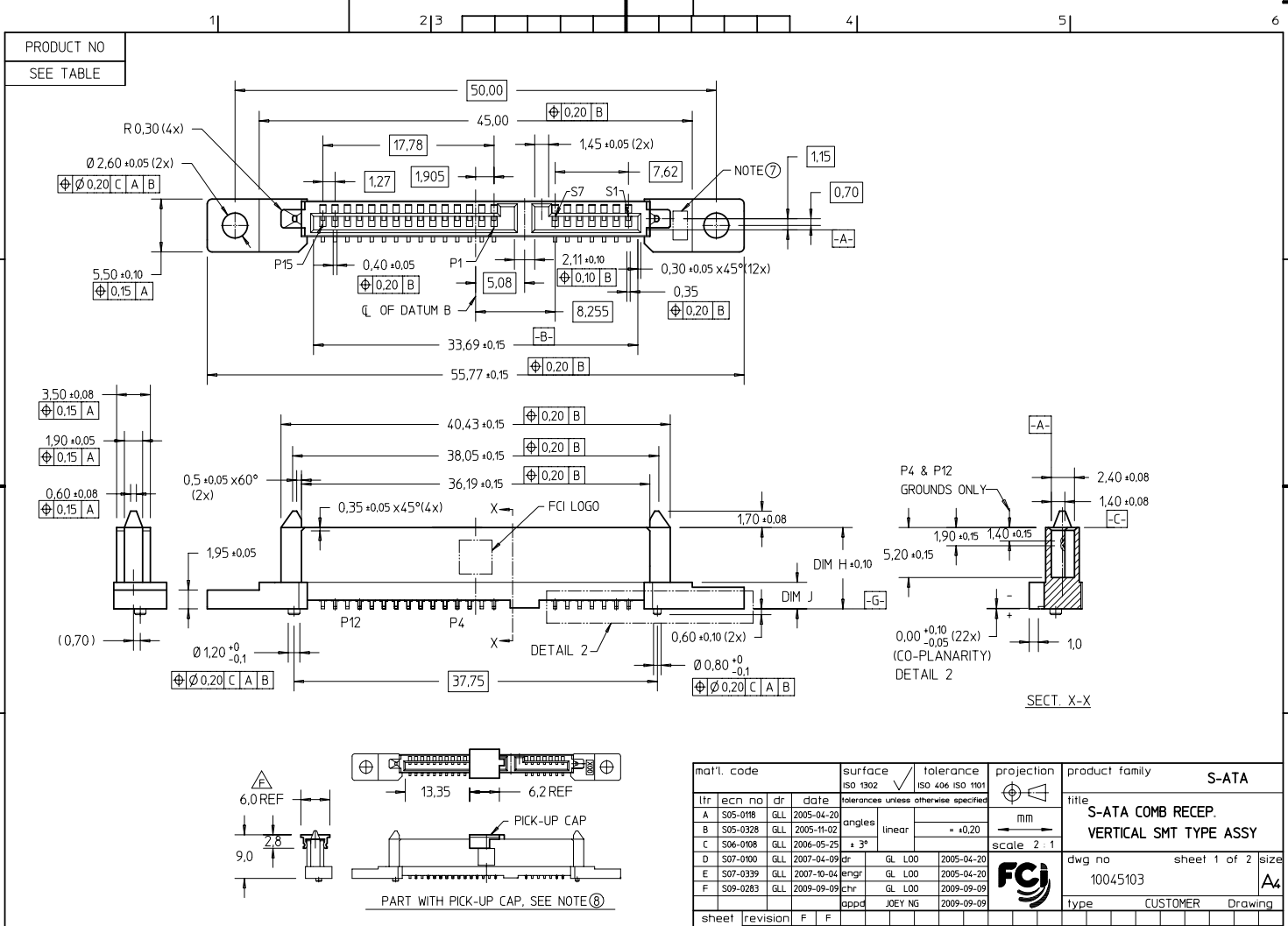


FCI CONFIDENTIAL
 This document is the property of and embodies CONFIDENTIAL and PROPRIETARY information of FCI. No part of the information shown here may be reproduced, stored in a retrieval system, or transmitted in any form or by any means, electronic, mechanical, photocopying, recording, or otherwise, without the written consent of FCI.
 Copyright © FCI



mat'l. code	surface	tolerance	projection	product family
	ISO 1302	ISO 406 ISO 1101		S-ATA
tolerances unless otherwise specified				
itr	ec'n no	dr	date	angles
A	S05-0118	QLL	2005-04-20	linear
B	S05-0328	QLL	2005-11-02	± 3°
C	S04-0108	QLL	2006-05-25	
D	S07-0100	QLL	2007-04-09	dr
E	S07-0339	QLL	2007-10-04	engr
F	S09-0283	QLL	2009-09-09	chr
		appd	JOEY NG	2009-09-09

sheet index	revision sheet	F 1	F 2																	
-------------	----------------	-----	-----	--	--	--	--	--	--	--	--	--	--	--	--	--	--	--	--	--

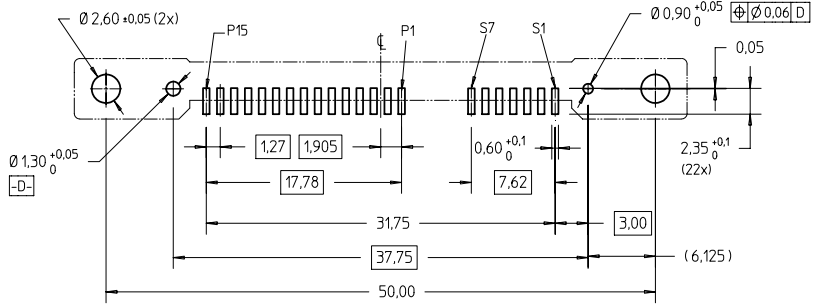
PDM: Rev:F STATUS Released 10/5/09 Printed: Oct 08, 2009

FCI CONFIDENTIAL

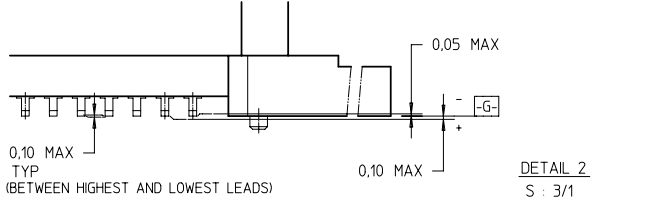


This document is the property of and embodies CONFIDENTIAL and PROPRIETARY information of FCI. No part of the information shown herein may be reproduced, stored in a retrieval system, or transmitted in any way or by any means, without the written consent of FCI. Copyright FCI.

PRODUCT NO	DIM H	DIM J	PICK-UP CAP	PACKAGING
10045103-001LF	8,15	2,45	NO	TRAY
10045103-001CLF			YES	TRAY
10045103-001C-TRLF			YES	TAPE & REEL
10045103-002LF	8,45	2,75	NO	TRAY
10045103-002CLF			YES	TRAY
10045103-002C-TRLF			YES	TAPE & REEL



RECOMMENDED PCB LAYOUT



NOTES:

- THIS PRODUCT MEETS THE SATA SPEC REV. 10a
- MATERIAL:
 - HOUSING : HIGH TEMP TERMOPLASTIC, UL 94V-0
COLOR : BLACK
 - TERMINAL : COPPER ALLOY
 - HOLD DOWN : COPPER ALLOY
- FINISH :
 - TERMINAL : 30u" Au PLATING (CONTACT POINT) OVER 50u" NICKEL
 - SOLDER TAIL : 100u" min Sn OVER 50u" NICKEL
 - HOLD DOWN : 100u" min Sn OVER 50u" NICKEL
- THE HOUSING WILL WITHSTAND EXPOSURE TO 260°C PEAK TEMPERATURE FOR 10 SECONDS IN A CONVECTION, INFRA-RED OR VAPOR PHASE REFLOW OVEN.
- THIS PRODUCT MEETS EUROPEAN UNION DIRECTIVES AND OTHER COUNTRY REGULATIONS AS DESCRIBED IN GS-22-008.
- THE STD PACKAGING IS IN TRAY UNLESS OTHERWISE SPECIFIED.
- IDENTIFICATION NUMBER FOR CONNECTOR HOUSING
- PART WITH PICKUP CAP, P/N XXXXXXXX-XXXC LF
- FOR TAPE & REEL PACKAGING, SUFFIX "-TR" ADDED.
P/N XXXXXXXX-XXXC-TR LF
- A Δ SYMBOL WILL BE NEXT TO ANY DIMENSION, VIEW, OR NOTE WHICH HAS BEEN MODIFIED WITH THE CURRENT DRAWING REVISION.

mat'l. code		surface	tolerance	projection	product family
ISO 1302		ISO 406	ISO 1101		S-ATA
ltr	ecn no	dr	date	title	
tolerances unless otherwise specified				S-ATA COMB RECEP. VERTICAL SMT TYPE ASSY	
F				mm	scale 2:1
angles		linear	= +0.20	FCI	
$\pm 3^\circ$		dr	QL L00	2005-04-20	dwg no
		engr	QL L00	2005-04-20	10045103
		chr	QL L00	2009-09-09	sheet 2 of 2 size
		appd	JOEY NG	2009-09-09	A4
sheet	revision	type			
index	sheet	CUSTOMER Drawing			