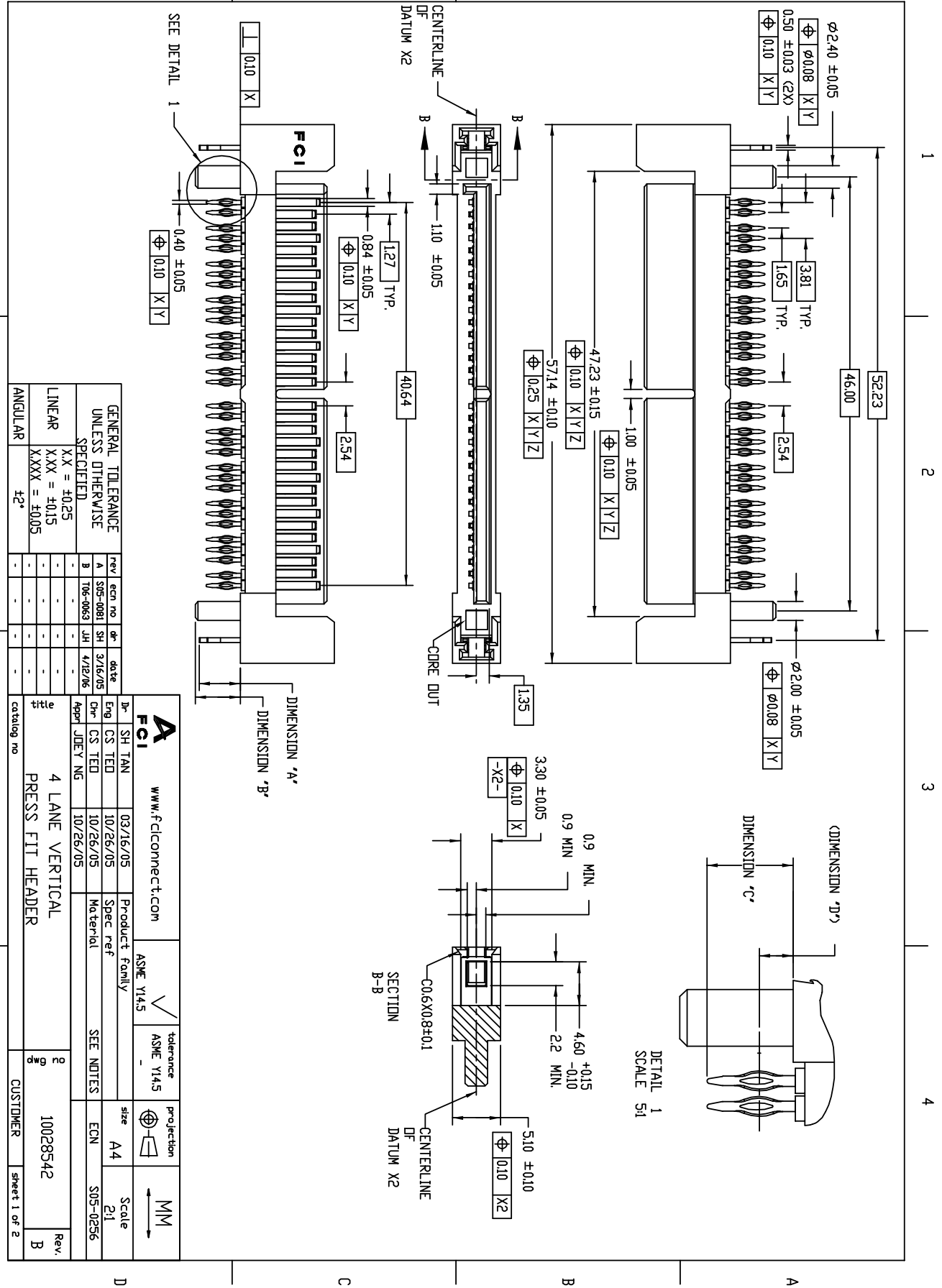


All rights strictly reserved. Reproduction or issue to third parties in any form whatever is not permitted without written authority from the proprietor. Property of FCI. Copyright FCI.



Tous droits strictement reserves. Reproduction ou communication a des tiers interdite sous quelque forme que ce soit sans autorisation ecrite du proprietaire. Propriete de c FCI. Droits de reproduction FCI.



GENERAL TOLERANCE	rev	ecn no	sh	date
UNLESS OTHERWISE SPECIFIED	A	S05-0081	SH	3/16/05
LINEAR	B	106-0663	JH	4/12/06
XX = ±0.25	-	-	-	-
XXX = ±0.15	-	-	-	-
XXXX = ±0.05	-	-	-	-
ANGULAR	-	-	-	-
	-	-	-	±2°

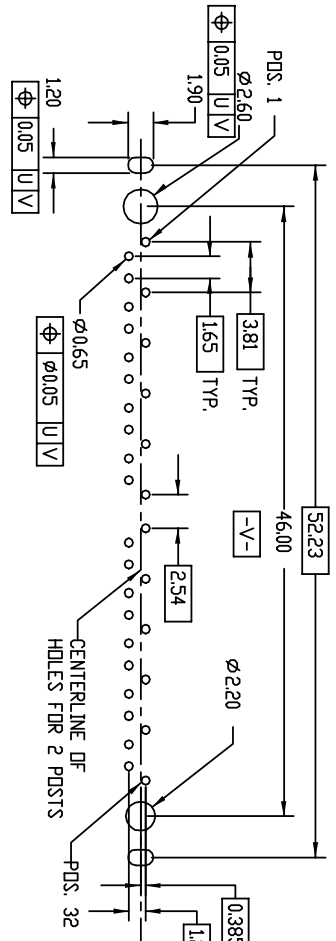
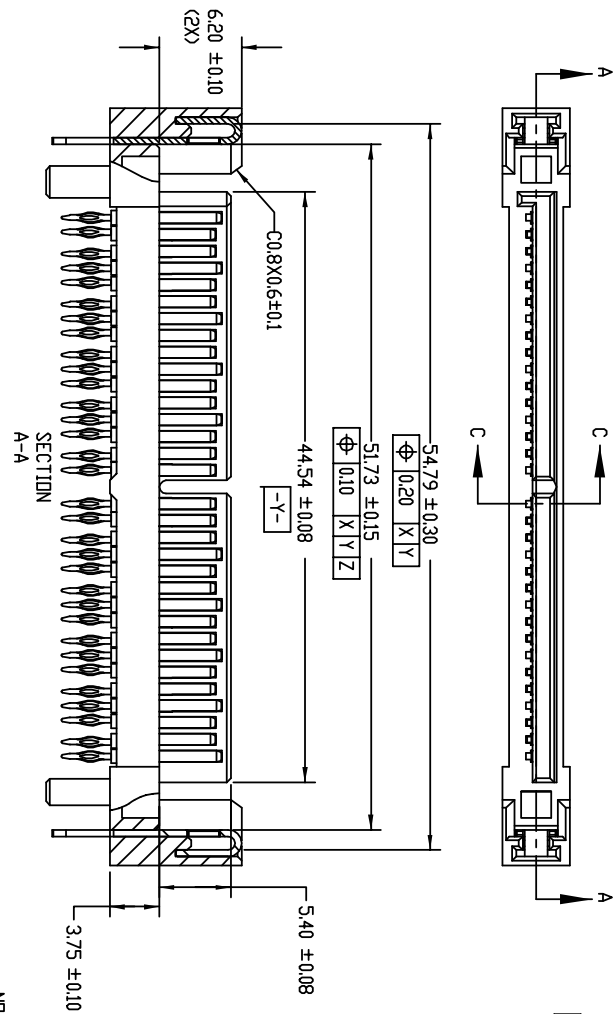
FCI		www.fciconnect.com		ASME Y14.5		tolerance		ASME Y14.5		projection		Scale	
Dr	SH TAN	03/16/05	Product family	ASME Y14.5	tolerance	ASME Y14.5	projection	ASME Y14.5	Scale	MM	2:1	Rev.	B
Eng	CS TED	10/26/05	Spec ref	SEE NOTES	ECN	S05-0256	size	A4	customer	10028542	sheet 1 of 2		
Appr	JDEY NG	10/26/05	Material										
4 LANE VERTICAL PRESS FIT HEADER													

All rights strictly reserved. Reproduction or issue to third parties in any form whatever is not permitted without written authority from the proprietor.
Property of FCI. Copyright FCI.



Tous droits strictement reserves. Reproduction ou communication a des tiers interdite sous quelque forme que ce soit sans autorisation ecrite du proprietaire.
Propriete de c FCI. Droits de reproduction FCI.

PRODUCT NO.	PCB THICKNESS	DIMENSION 'A'	DIMENSION 'B'	DIMENSION 'C'	DIMENSION 'D'
10028542-001LF	1.57±0.10	2.75±0.20	3.20±0.10	3.65±0.10	1.43±0.10
10028542-002LF	3.18±0.10	4.35±0.20	4.80±0.10	3.65±0.10	1.43±0.10
10028542-003LF	1.57±0.10	2.75±0.20	3.20±0.10	2.10±0.10	0.79±0.10



- NOTES
1. MATERIAL:
HOUSING: HIGH TEMPERATURE PLASTIC, BLACK OR GRAY, UL94V-0
CONTACT: COPPER ALLOY
HOLD DOWN: COPPER ALLOY
 2. FINISH:
1.27um MIN NICKEL UNDERPLATE OVERALL,
1.91um MIN TIN LEAD-FREED ON SOLDER TAIL,
0.76um MIN GOLD IN CONTACT AREA
 3. THIS PRODUCT MEETS EUROPEAN UNION DIRECTIVES AND OTHER COUNTRY REGULATIONS AS DESCRIBED IN GS-22-008
 4. THE HOUSING WILL WITHSTAND EXPOSURE TO 260°C PEAK TEMPERATURE FOR 10 SECONDS IN A CONVECTION, INFRARED OR VAPOR PHASE REFLUX OVEN
 5. CONTACT WIFE: 207 MIN FOR SIGNAL AND 2.52 MIN FOR GROUND

REV. 1	4 LANE VERTICAL PRESS FIT HEADER	REV. 2	10028542	REV. B
CATALOG NO.		CUSTOMER		SHEET 2 OF 2