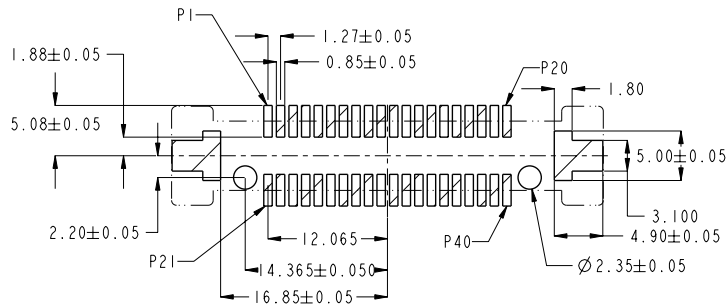
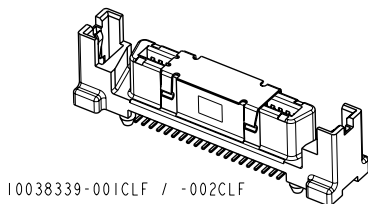
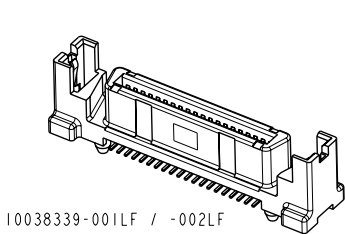
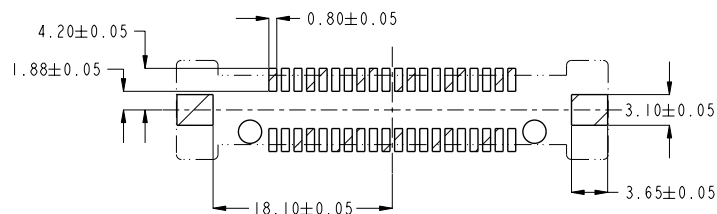


PRODUCT NO	REMARKS
10038339-001LF	WITHOUT PICK-UP CAP
10038339-001CLF	WITH PICK-UP CAP
10038339-002LF	WITHOUT PICK-UP CAP
10038339-002CLF	WITH PICK-UP CAP



RECOMMENDED PCB LAYOUT FOR 10038339-001LF & -001CLF



RECOMMENDED PCB LAYOUT FOR 10038339-002LF & -002CLF

NOTES:

- MATERIAL :  
HOUSING : HIGH TEMPERATURE THERMOPLASTIC  
CONTACTS : COPPER ALLOY  
ESD CONTACTS : COPPER ALLOY
- PLATING :  
CONTACTS : 1.27um/50u" MIN NICKEL UNDERPLATE  
0.76um/30u" MIN GOLD AT CONTACT AREA  
2.54um/100u" MIN TIN AT SOLDER TAIL  
ESD CONTACTS : 1.27um/50u" MIN NICKEL UNDERPLATE  
2.54um/100u" MIN TIN AT OVERALL
- THE HOUSING WILL WITHSTAND EXPOSURE TO 260°C PEAK TEMPERATURE FOR 10 SECONDS IN A CONVECTION, INFRA-RED OR VAPOR PHASE REFLOW OVEN.
- THIS PRODUCT MEETS EUROPEAN UNION DIRECTIVES AND OTHER COUNTRY REGULATIONS AS DESCRIBED ON GS-22-008.

REV F - 2008-04-17

rev	ecm no	dr	date
A	S05-0136	TAY	2005-05-11
B	S05-0216	TAY	2005-08-01
C	S05-0275	TAY	2005-09-22
D	S07-0042	TAY	2007-02-07
E	S10-0071	TAY	2010-03-30
-	-	-	-
-	-	-	-

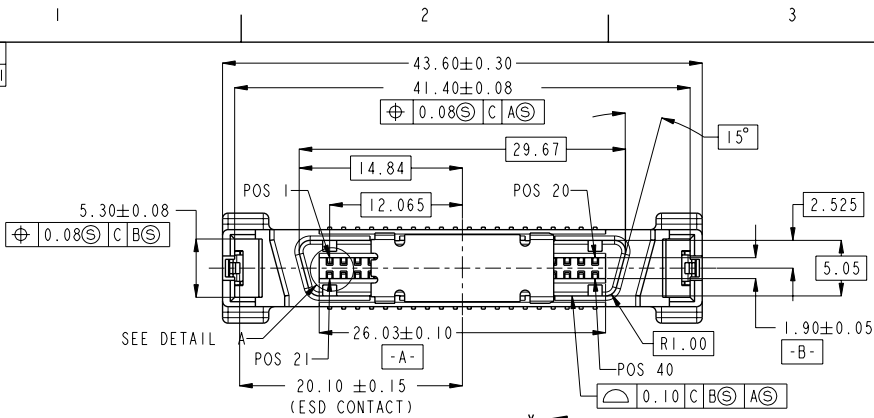
www.fciconnect.com		surface ASME Y14.5	tolerance std ASME Y14.5	projection MM	Scale 2:1
Dr KP TAY	2007-02-07	ANGULAR	0.x ±0.35	size A4	ECN S10-0071
Eng KP TAY	2010-03-30	LINEAR	0.xx ±0.25	ECN S10-0071	Spec ref -
Chr KP TAY	2010-03-30	0° ±2°	0.xxx ±0.13	Product family	
Appr JOEY NG	2010-03-30				
FCJ		SCA-2 & FIBER CHANNEL		part no 10038339	Rev. E
RECEIPT, SMT		CUSTOMER		sheet 1 of 2	
catalog no					

PDM: Rev:E

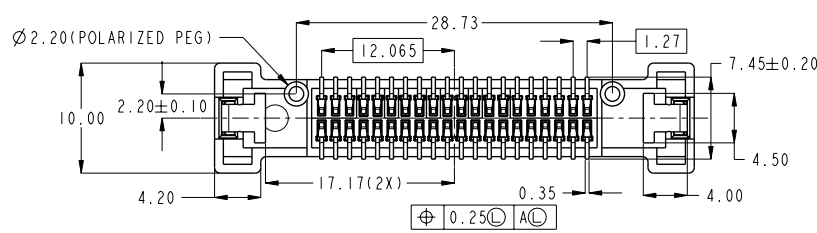
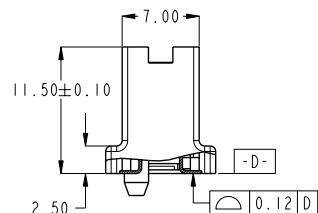
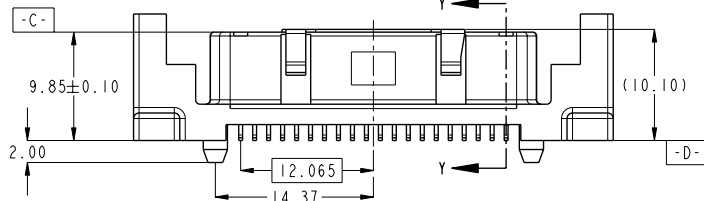
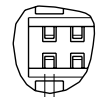
STATUS:Released

Printed: Dec 01, 2010

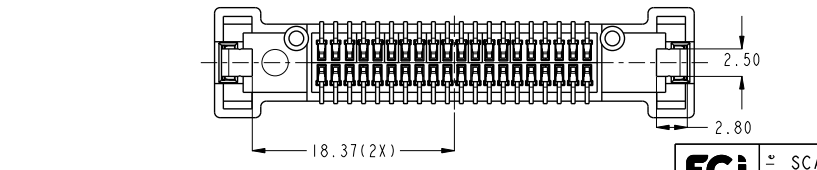
PRODUCT NO  
REFER TO PAGE 1



DETAIL A  
SCALE 4:1



10038339-001LF / -001CLF



10038339-002LF / -002CLF

	<b>FCJ</b>	<b>FCJ</b>	<b>FCJ</b>	<b>FCJ</b>
	TITLE SCA-2 & FIBER CHANNEL RECEPT, SMT	DRWG NO 10038339	REV. E	CUSTOMER

REV F - 2008-04-17

PDM: Rev:E STATUS:Released 4 Printed: Dec 01, 2010