

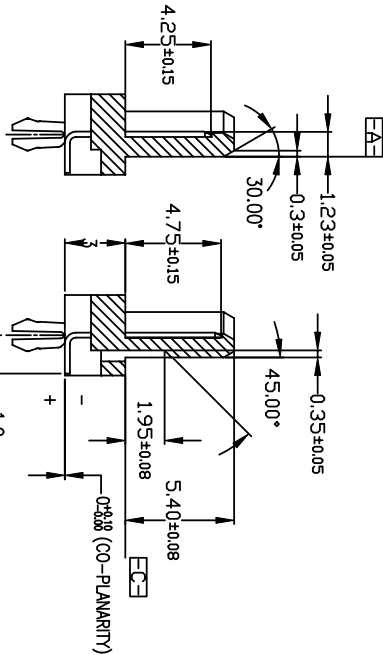
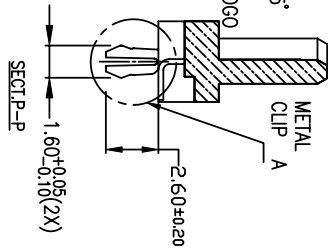
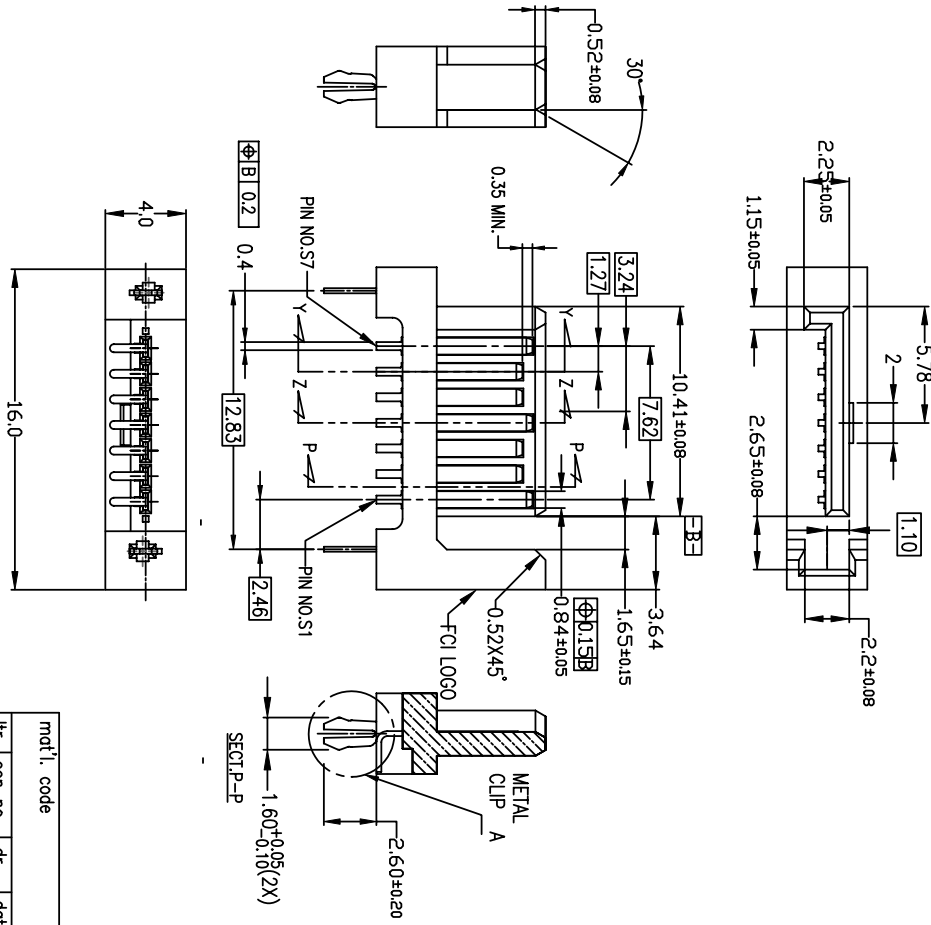


B

A

1 | 2

1 | 2



mat'l. code		tolerances unless otherwise specified		CUSTOMER COPY		title	
ltr	ecn no	dr	date	linear	projection	product family	code
C	T06-0078	S.Lin	5/12/06'	.XX ± 0.20	MM	SATA	TWN
D	T06-0139	S.Lin	07/31/06'	.XXX ± 0.10	MM	SATA	1 of
E	T07-1010	S.Lin	4/11/07	0' ± 2"	MM	SATA	
F	T07-1010	S.Lin	4/11/07	JPEH	MM	SATA	
G	T07-1101	S.Lin	6/07/07	JPEH	MM	SATA	
				chr	GL Lo	size	
				engr	JOEY NG	dmg no	
				appr	11/16/04	59334	
					11/16/04		
sheet	revision	G	G	G			
index	sheet	1	2	3			

CONFIDENTIAL



www.fciconnect.com

S-ATA SIGNAL PLUG
SMT VERTICAL TYPE ASSY

product family
SATA

code
TWN

code code

sheet
1 of

3 |

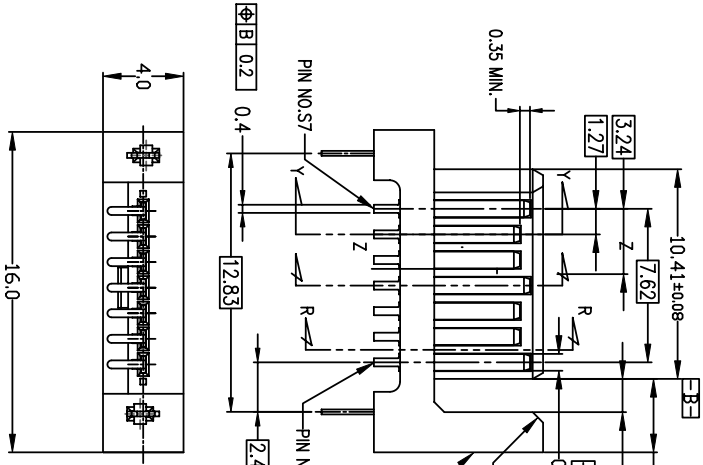
3 |

ACAD

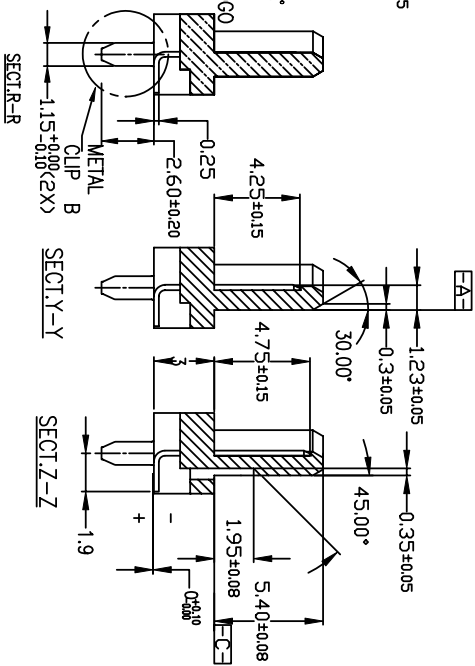
4



1 | 2



59334-003LF



METAL CLIP B

3 |

mat'l. code	tolerances unless otherwise specified	CUSTOMER COPY	projection	title	code
lfr	ecn no	dr	date	linear	.XX ± 0.30
C	106-0078	S.Lin	5/12/06'	.XXX ± 0.10	0' ± 2"
D	106-0139	S.Lin	07/31/06'		
E	107-1010	S.Lin	4/11/07	JPEH	4/15/03
F	107-1010	S.Lin	4/11/07	JPEH	4/15/03
G	107-1101	S.Lin	6/7/07	chr GL Lo	11/16/04
sheet	revision	G	G	appd	JOEY NG
index	sheet	1	2	3	

CONFIDENTIAL



S-ATA SIGNAL PLUG
SMT VERTICAL TYPE ASSY

product family SATA
size dng no 59334
code TWIN
sheet 2 of

ACAD

1 | 2

3 |

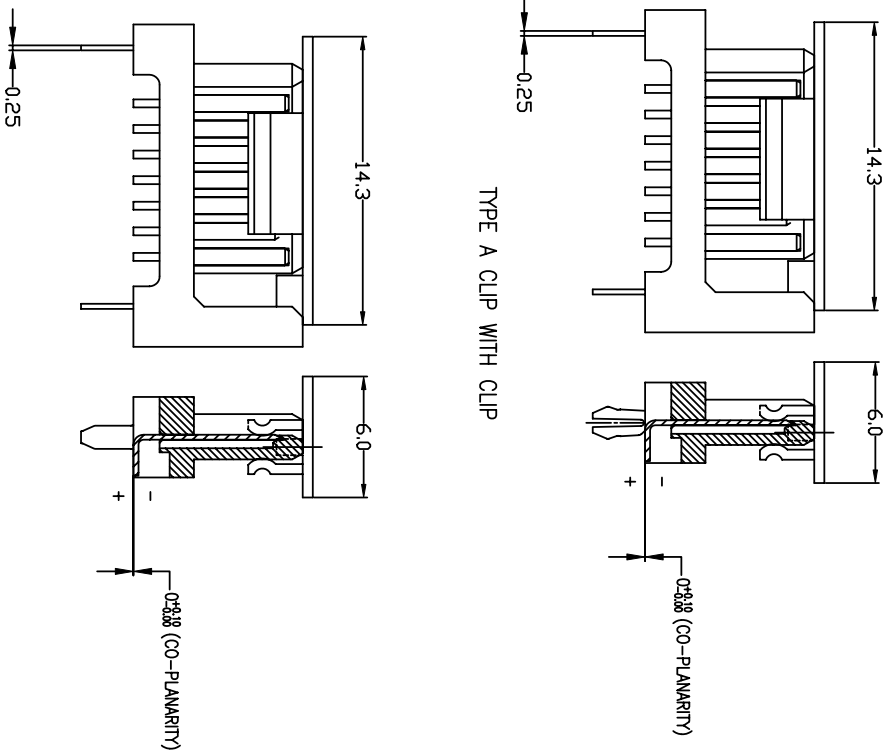
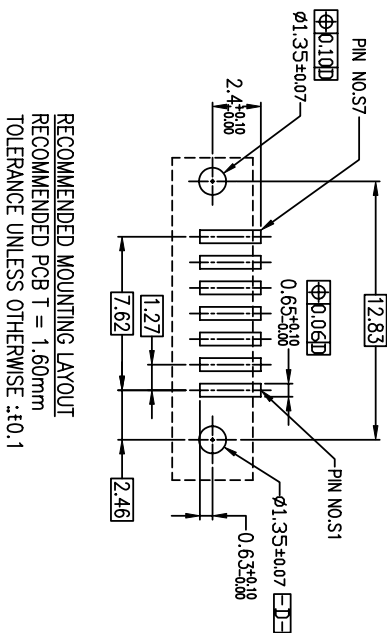
code code

4

4



- NOTE
- THIS PRODUCT MEETS THE SATA SPEC REV.1.0a
 - MATERIAL
 - i) HOUSING : HIGH TEMPERATURE THERMOPLASTIC UL94V-0
 - ii) TERMINAL : COPPER ALLOY
 - iii) HOLD DOWN : COPPER ALLOY
 - P/N : 59334-XXXXF
 - i) TERMINAL : Au PLATING AT CONTACT POINT WITH NICKEL UNDERPLATE
 - ii) HOLD DOWN : MATT Sn PLATING
 - THE HOUSING WILL WITHSTAND EXPOSURE TO 260 C PEAK TEMPERATURE FOR 10 SECONDS IN A CONNECTION, INFRA-RED OR VAPOR PHASE REFLOW OVEN.
 - FOR P/N NO.: 59334-XXXXF, THIS PRODUCT MEETS EUROPEAN UNION DIRECTIVES AND OTHER COUNTRY REGULATIONS AS DESCRIBED IN GS-22-008.
 - PRODUCT NUMBERING:
 - 59334 - X X X X LF - LEAD FREE
 - HOUSING COLOR: BLACK
 - BLANK : BLACK
 - 2: CLIP TYPE A
 - 3: CLIP TYPE B
 - PACKAGING:
 - 0: TUBE
 - 1: TRAY WITH CAP
 - 2: TAPE & REEL WITH CAP
 - PLATING AT CONTACT AREA
 - 0: 15 U" GOLD
 - 1: 5U" GOLD



mat'l. code	ecn no.	dr	date	tolerances unless otherwise specified	CUSTOMER COPY	projection	product family	code
A	S03-0057	JPEH	04/15/03	.XX ± 0.20			S-ATA SIGNAL PLUG	TWN
B	S04-0170	JPEH	08/04/04	.XXX ± 0.10			SMT VERTICAL TYPE ASS'Y	sheet 1 of
C	S04-0244	GLL	11/16/04	0' ±2"				
D	T06-0076	S.Lin	5/12/06		JPEH	MM	SATA	
E	T06-0139	S.Lin	7/31/06		JPEH			
F	T07-1010	S.Lin	4/11/07		chr GL 100	scale		
G	T07-1101	S.Lin	6/07/07		JOEY NG			
sheet	revision	G	G	G				
index	sheet	1	2	3				

CONFIDENTIAL



www.fciconnect.com
S-ATA SIGNAL PLUG
SMT VERTICAL TYPE ASS'Y
product family: SATA
size dwg no: 59334
code: TWN

ACAD

code code